

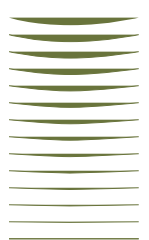
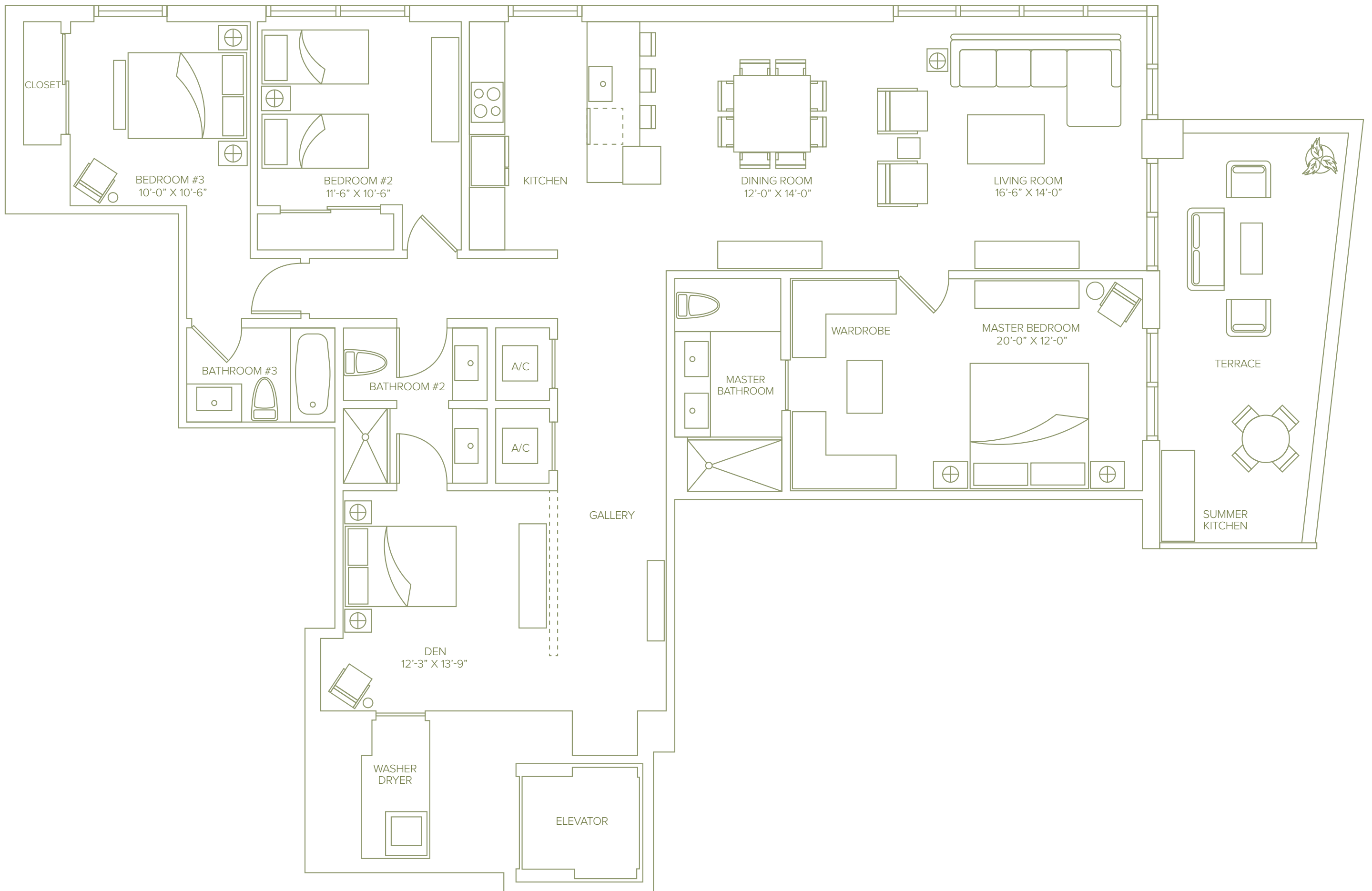
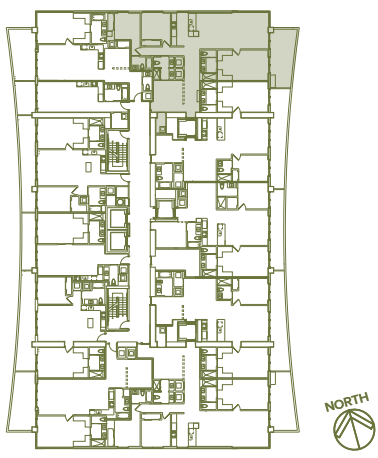
# UNIT A

Line 01

3 Bedrooms + Den / 3 Baths

2,148 Sq Ft / 199.6 M<sup>2</sup>

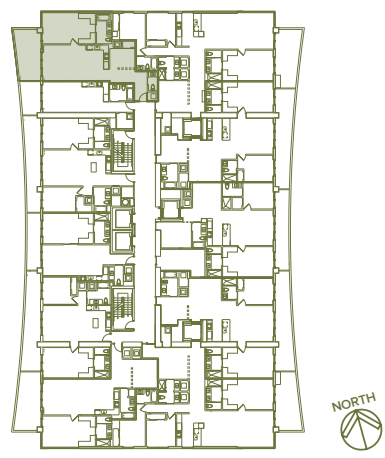
Including Terrace



## 1010 BRICKELL



Stated square footage includes the terrace of the Unit and is otherwise measured to the exterior boundaries of the exterior walls and the centerline of interior demising walls. This will in fact vary from the square footage that would be determined by using the description and definition of the "Engineering Area" set forth in the Declaration (which generally only includes the interior airspace between the perimeter walls and excludes interior structural components). For the square footage of the "Engineering Area" calculated in the manner set forth in the Declaration, as well as the area of the Unit measured as described herein but without the terrace, see Exhibit "3" to the Declaration. All square footages are approximate and may vary with actual construction. All floor plans and development plans are subject to change. Plans are not to scale. The survey of the units and the provisions of the Declaration of Condominium shall control in determining the boundaries and actual dimensions of the units. All fixtures, furniture, items of finish, and decorations are for display purposes only and will not be included with the unit. Consult the Agreement, the features list included on the back of this bi-fold floor plan and the prospectus for a description of the features which are to be included in the unit. The approximate size of the unit's terrace is 239 Sq Ft / 22.2 M<sup>2</sup>.



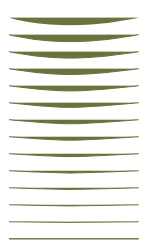
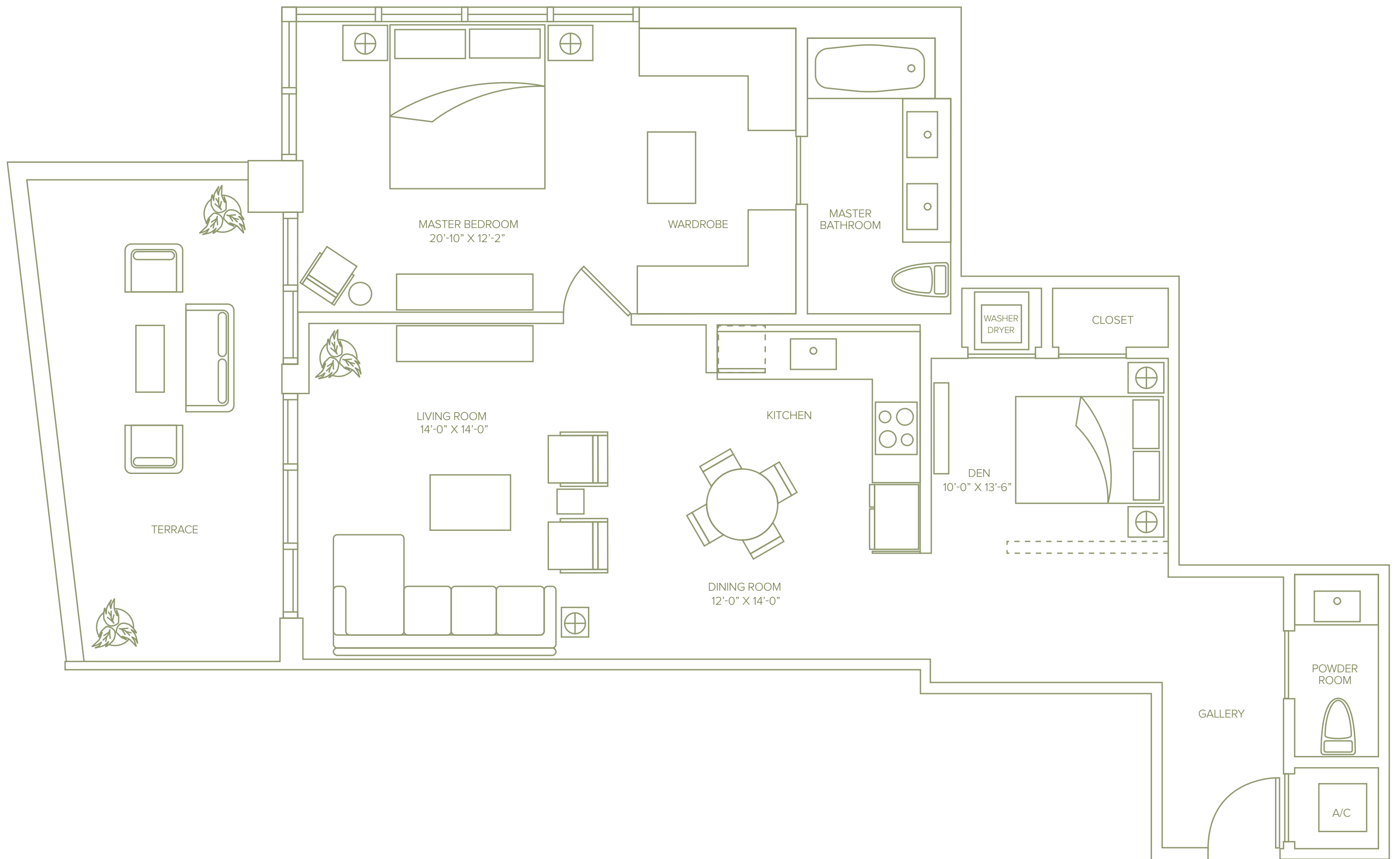
# UNIT B

Line 11

1 Bedroom + Den / 1.5 Baths

1,260 Sq Ft / 117.1 M<sup>2</sup>

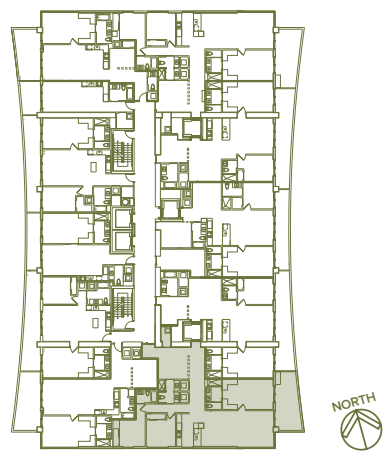
Including Terrace



## 1010 BRICKELL



Stated square footage includes the terrace of the Unit and is otherwise measured to the exterior boundaries of the exterior walls and the centerline of interior demising walls. This will in fact vary from the square footage that would be determined by using the description and definition of the "Engineering Area" set forth in the Declaration (which generally only includes the interior airspace between the perimeter walls and excludes interior structural components). For the square footage of the "Engineering Area" calculated in the manner set forth in the Declaration, as well as the area of the Unit measured as described herein but without the terrace, see Exhibit "3" to the Declaration. All square footages are approximate and may vary with actual construction. All floor plans and development plans are subject to change. Plans are not to scale. The survey of the units and the provisions of the Declaration of Condominium shall control in determining the boundaries and actual dimensions of the units. All fixtures, furniture, items of finish, and decorations are for display purposes only and will not be included with the unit. Consult the Agreement, the features list included on the back of this bi-fold floor plan and the prospectus for a description of the features which are to be included in the unit. The approximate size of the unit's terrace is 214 Sq Ft / 19.9 M.<sup>2</sup>



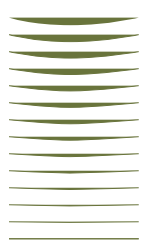
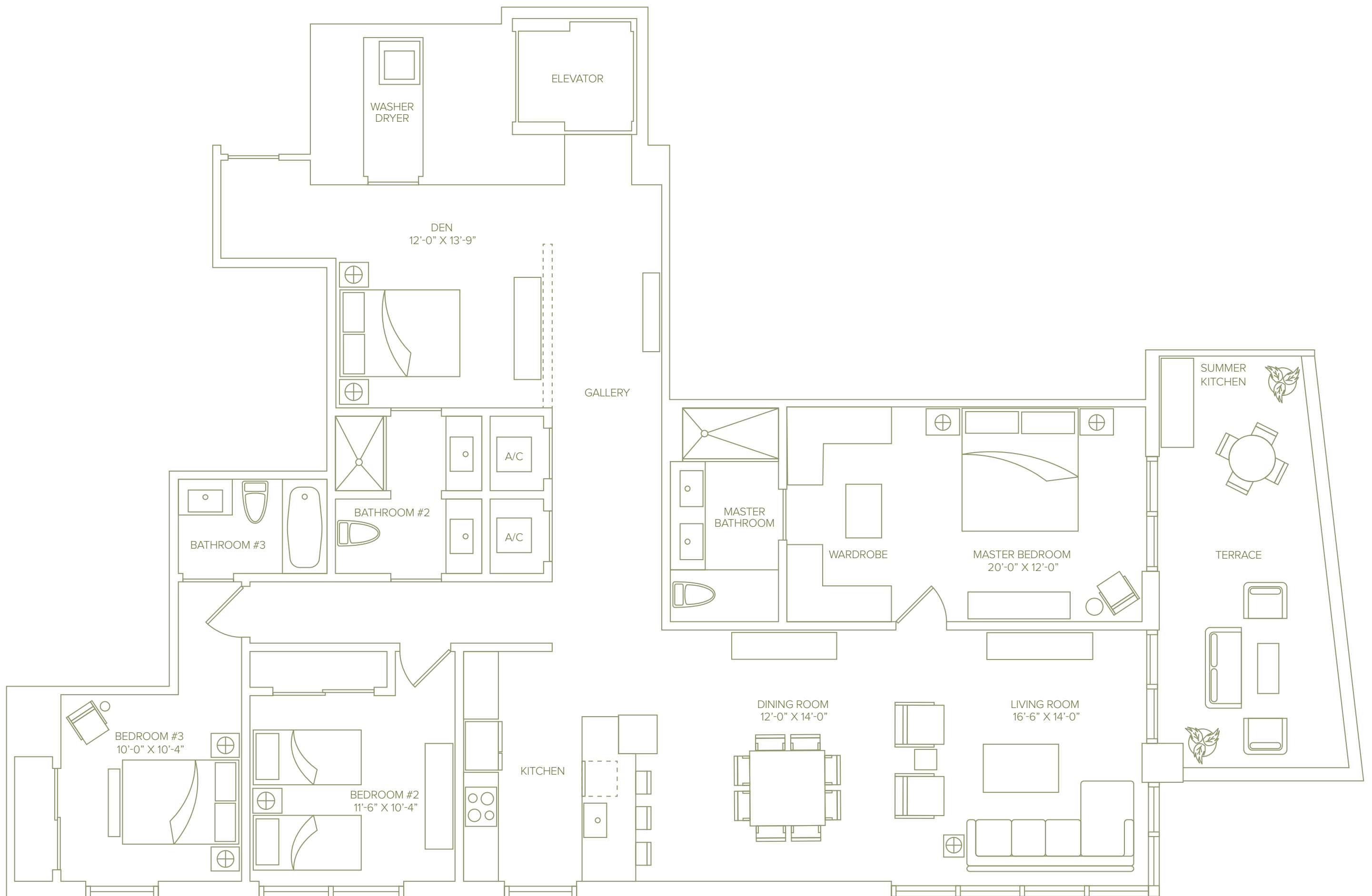
# UNIT C

Line 05

3 Bedrooms + Den / 3 Baths

2,181 Sq Ft / 202.6 M<sup>2</sup>

Including Terrace



## 1010 BRICKELL



Stated square footage includes the terrace of the Unit and is otherwise measured to the exterior boundaries of the exterior walls and the centerline of interior demising walls. This will in fact vary from the square footage that would be determined by using the description and definition of the "Engineering Area" set forth in the Declaration (which generally only includes the interior airspace between the perimeter walls and excludes interior structural components). For the square footage of the "Engineering Area" calculated in the manner set forth in the Declaration, as well as the area of the Unit measured as described herein but without the terrace, see Exhibit "3" to the Declaration. All square footages are approximate and may vary with actual construction. All floor plans and development plans are subject to change. Plans are not to scale. The survey of the units and the provisions of the Declaration of Condominium shall control in determining the boundaries and actual dimensions of the units. All fixtures, furniture, items of finish, and decorations are for display purposes only and will not be included with the unit. Consult the Agreement, the features list included on the back of this bi-fold floor plan and the prospectus for a description of the features which are to be included in the unit. The approximate size of the unit's terrace is 239 Sq Ft / 22.2 M.<sup>2</sup>

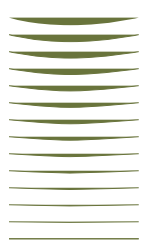
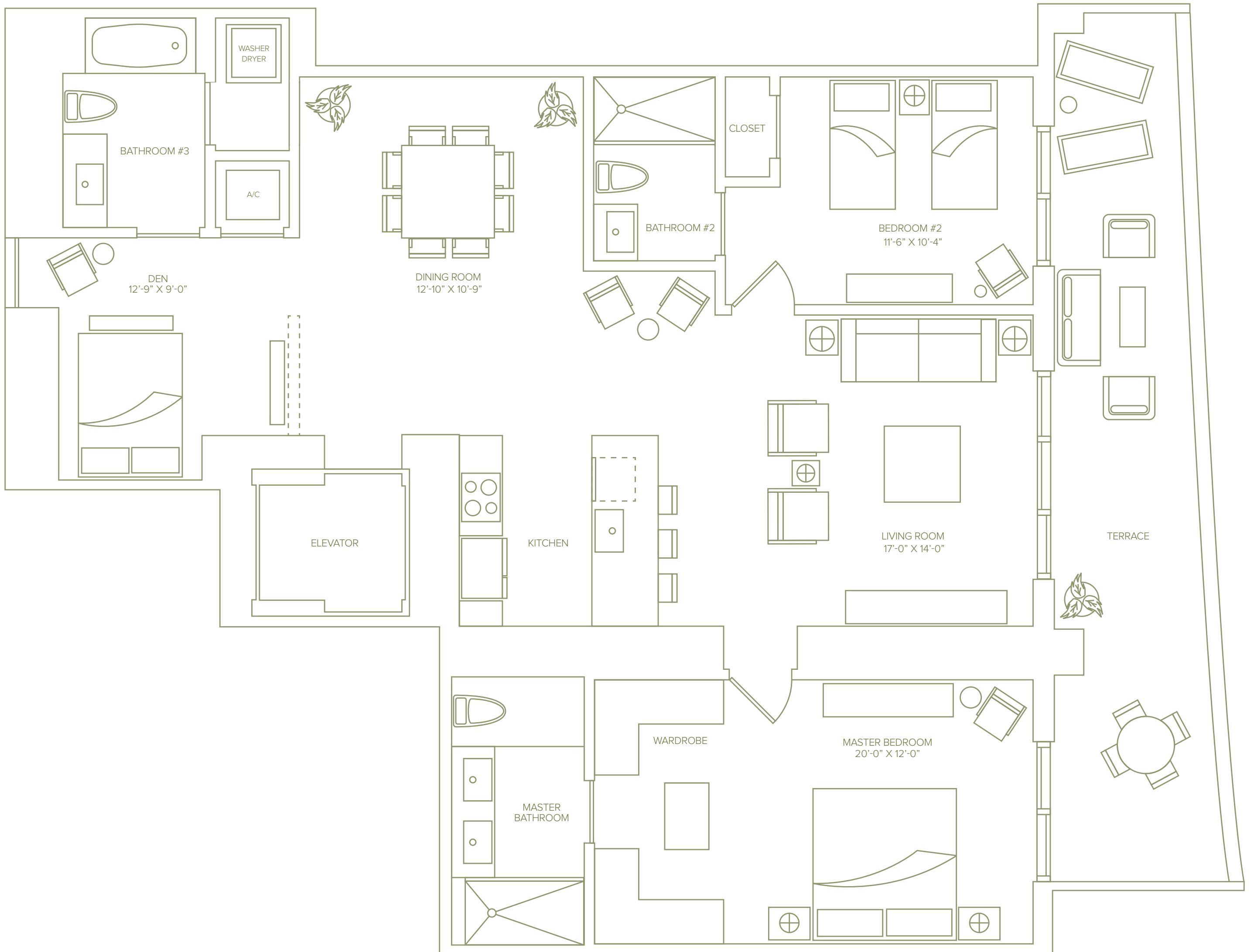
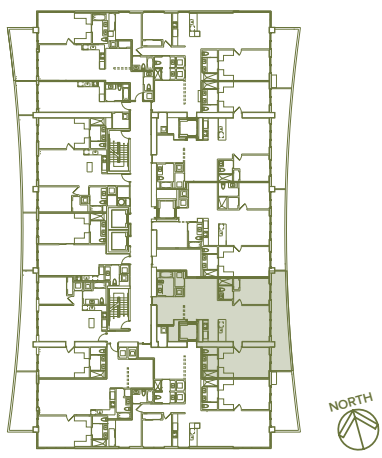
# UNIT D

Line 04

2 Bedrooms + Den / 3 Baths

1,778 Sq Ft / 165.2 M<sup>2</sup>

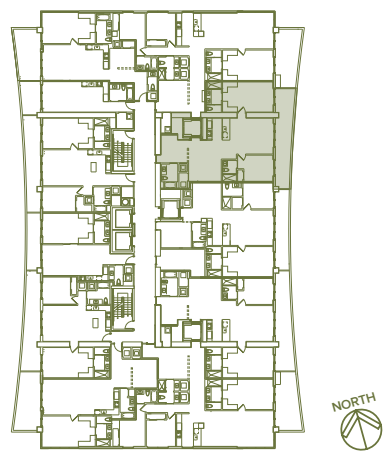
Including Terrace



## 1010 BRICKELL

Stated square footage includes the terrace of the Unit and is otherwise measured to the exterior boundaries of the exterior walls and the centerline of interior demising walls. This will in fact vary from the square footage that would be determined by using the description and definition of the "Engineering Area" set forth in the Declaration (which generally only includes the interior airspace between the perimeter walls and excludes interior structural components). For the square footage of the "Engineering Area" calculated in the manner set forth in the Declaration, as well as the area of the Unit measured as described herein but without the terrace, see Exhibit "3" to the Declaration. All square footages are approximate and may vary with actual construction. All floor plans and development plans are subject to change. Plans are not to scale. The survey of the units and the provisions of the Declaration of Condominium shall control in determining the boundaries and actual dimensions of the units. All fixtures, furniture, items of finish, and decorations are for display purposes only and will not be included with the unit. Consult the Agreement, the features list included on the back of this bi-fold floor plan and the prospectus for a description of the features which are to be included in the unit. The approximate size of the unit's terrace is 287 Sq Ft / 26.7 M.<sup>2</sup>





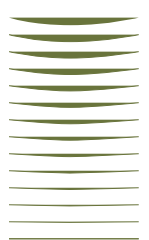
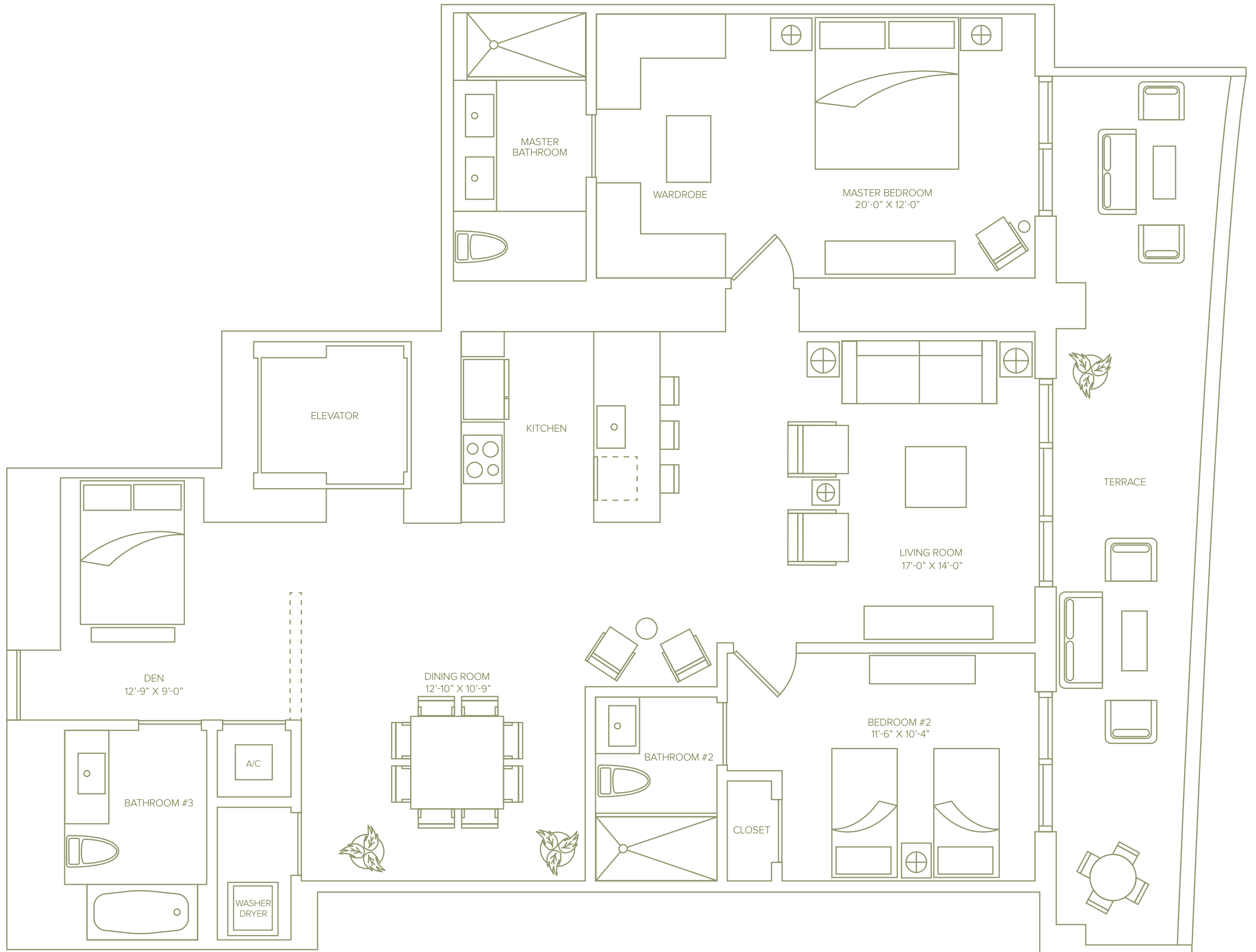
# UNIT Dr

Line 02

2 Bedrooms + Den / 3 Baths

1,778 Sq Ft / 165.2 M<sup>2</sup>

Including Terrace



## 1010 BRICKELL



Stated square footage includes the terrace of the Unit and is otherwise measured to the exterior boundaries of the exterior walls and the centerline of interior demising walls. This will in fact vary from the square footage that would be determined by using the description and definition of the "Engineering Area" set forth in the Declaration (which generally only includes the interior airspace between the perimeter walls and excludes interior structural components). For the square footage of the "Engineering Area" calculated in the manner set forth in the Declaration, as well as the area of the Unit measured as described herein but without the terrace, see Exhibit "3" to the Declaration. All square footages are approximate and may vary with actual construction. All floor plans and development plans are subject to change. Plans are not to scale. The survey of the units and the provisions of the Declaration of Condominium shall control in determining the boundaries and actual dimensions of the units. All fixtures, furniture, items of finish, and decorations are for display purposes only and will not be included with the unit. Consult the Agreement, the features list included on the back of this bi-fold floor plan and the prospectus for a description of the features which are to be included in the unit. The approximate size of the unit's terrace is 287 Sq Ft / 26.7 M.<sup>2</sup>

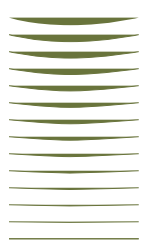
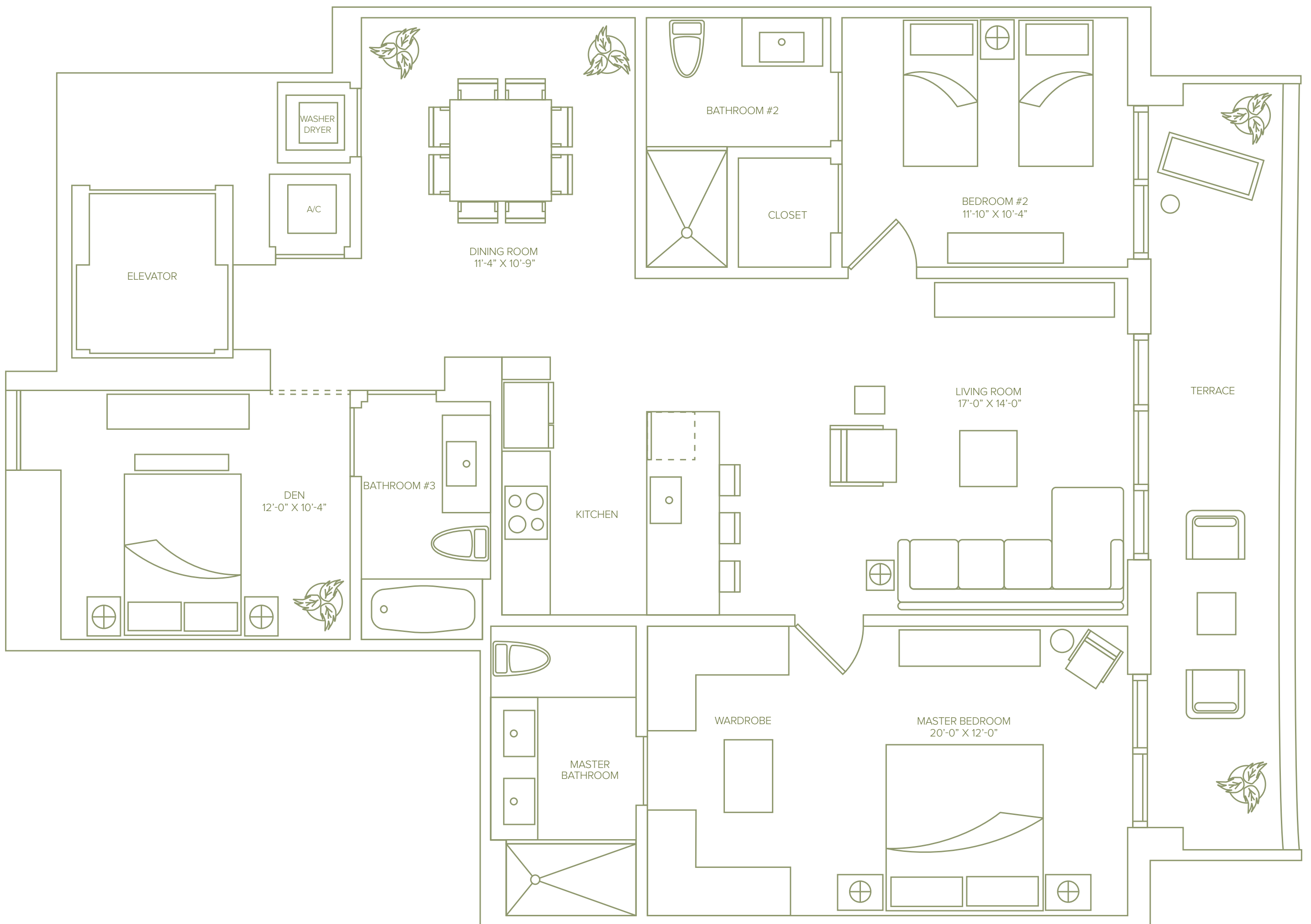
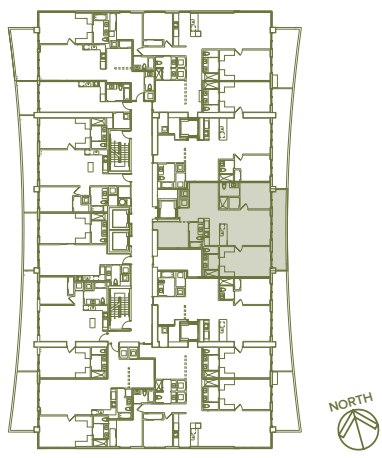
# UNIT E

Line 03

2 Bedrooms + Den / 3 Baths

1,584 Sq Ft / 147.2 M<sup>2</sup>

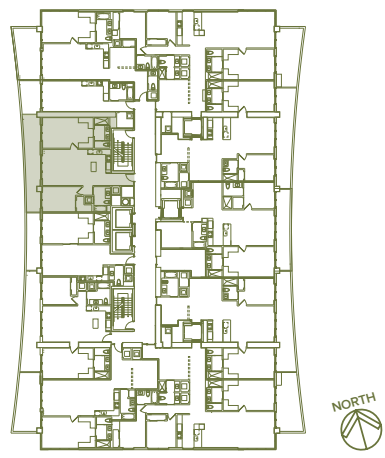
Including Terrace



## 1010 BRICKELL

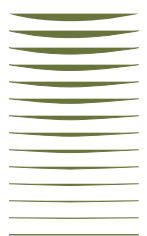
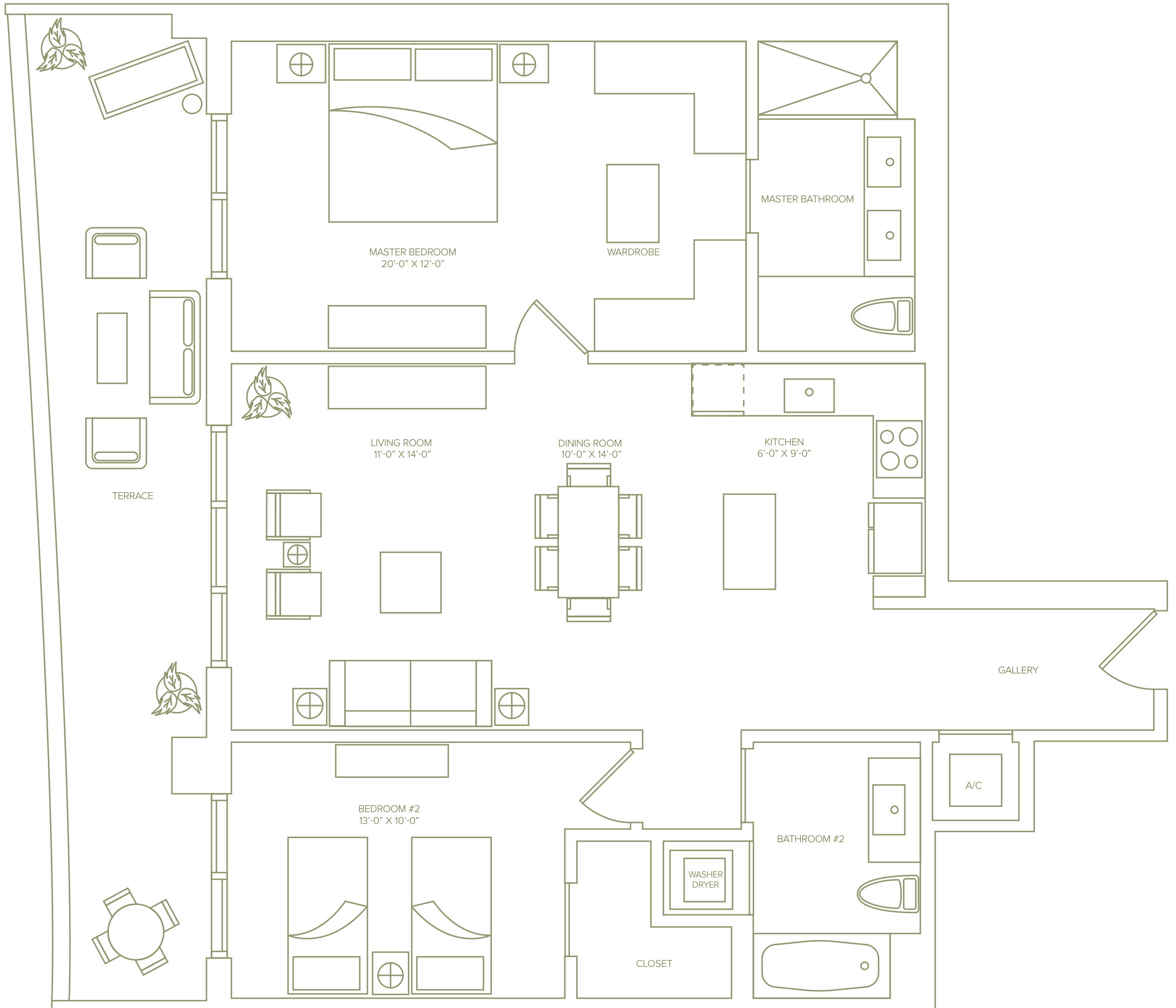


Stated square footage includes the terrace of the Unit and is otherwise measured to the exterior boundaries of the exterior walls and the centerline of interior demising walls. This will in fact vary from the square footage that would be determined by using the description and definition of the "Engineering Area" set forth in the Declaration (which generally only includes the interior airspace between the perimeter walls and excludes interior structural components). For the square footage of the "Engineering Area" calculated in the manner set forth in the Declaration, as well as the area of the Unit measured as described herein but without the terrace, see Exhibit "3" to the Declaration. All square footages are approximate and may vary with actual construction. All floor plans and development plans are subject to change. Plans are not to scale. The survey of the units and the provisions of the Declaration of Condominium shall control in determining the boundaries and actual dimensions of the units. All fixtures, furniture, items of finish, and decorations are for display purposes only and will not be included with the unit. Consult the Agreement, the features list included on the back of this bi-fold floor plan and the prospectus for a description of the features which are to be included in the unit. The approximate size of the unit's terrace is 194 Sq Ft / 18.0 M<sup>2</sup>.



# UNIT F

Line 09  
2 Bedrooms / 2 Baths  
1,404 Sq Ft / 130.4 M<sup>2</sup>  
Including Terrace

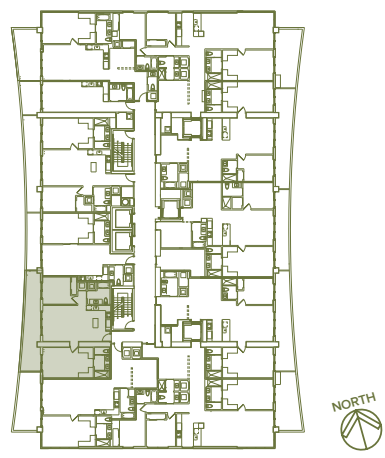


## 1010 BRICKELL



Stated square footage includes the terrace of the Unit and is otherwise measured to the exterior boundaries of the exterior walls and the centerline of interior demising walls. This will in fact vary from the square footage that would be determined by using the description and definition of the "Engineering Area" set forth in the Declaration (which generally only includes the interior airspace between the perimeter walls and excludes interior structural components). For the square footage of the "Engineering Area" calculated in the manner set forth in the Declaration, as well as the area of the Unit measured as described herein but without the terrace, see Exhibit "3" to the Declaration. All square footages are approximate and may vary with actual construction. All floor plans and development plans are subject to change. Plans are not to scale. The survey of the units and the provisions of the Declaration of Condominium shall control in determining the boundaries and actual dimensions of the units. All fixtures, furniture, items of finish, and decorations are for display purposes only and will not be included with the unit. Consult the Agreement, the features list included on the back of this bi-fold floor plan and the prospectus for a description of the features which are to be included in the unit. The approximate size of the unit's terrace is 256 Sq Ft / 23.8 M.<sup>2</sup>





# UNIT G

Line 07  
 2 Bedrooms / 2 Baths  
 1,385 Sq Ft / 128.7 M<sup>2</sup>  
 Including Terrace

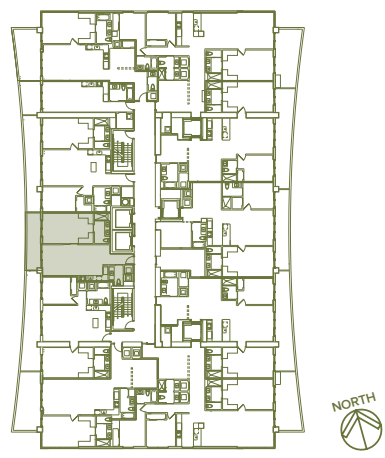


## 1010 BRICKELL



Stated square footage includes the terrace of the Unit and is otherwise measured to the exterior boundaries of the exterior walls and the centerline of interior demising walls. This will in fact vary from the square footage that would be determined by using the description and definition of the "Engineering Area" set forth in the Declaration (which generally only includes the interior airspace between the perimeter walls and excludes interior structural components). For the square footage of the "Engineering Area" calculated in the manner set forth in the Declaration, as well as the area of the Unit measured as described herein but without the terrace, see Exhibit "3" to the Declaration. All square footages are approximate and may vary with actual construction. All floor plans and development plans are subject to change. Plans are not to scale. The survey of the units and the provisions of the Declaration of Condominium shall control in determining the boundaries and actual dimensions of the units. All fixtures, furniture, items of finish, and decorations are for display purposes only and will not be included with the unit. Consult the Agreement, the features list included on the back of this bi-fold floor plan and the prospectus for a description of the features which are to be included in the unit. The approximate size of the unit's terrace is 287 Sq Ft / 26.7 M<sup>2</sup>.





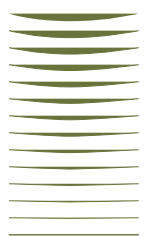
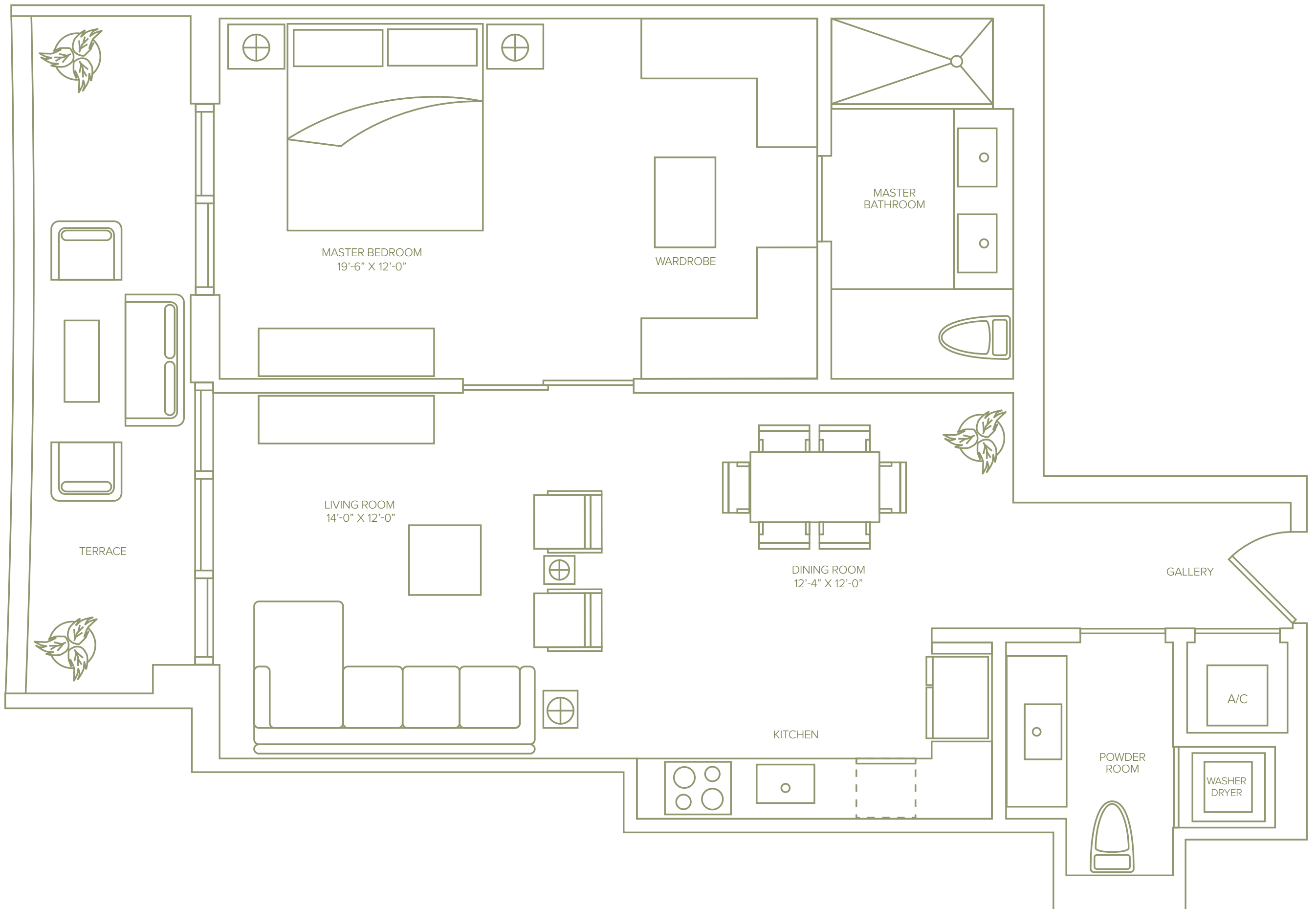
# UNIT H

Line 08

1 Bedroom / 1.5 Baths

988 Sq Ft / 91.8 M<sup>2</sup>

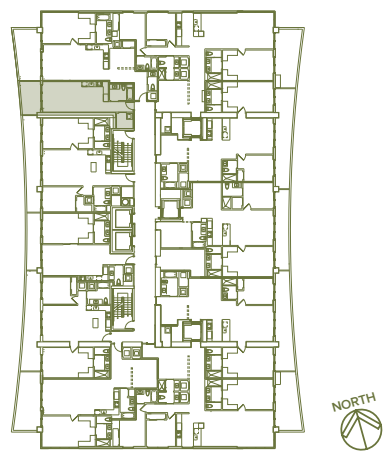
Including Terrace



## 1010 BRICKELL



Stated square footage includes the terrace of the Unit and is otherwise measured to the exterior boundaries of the exterior walls and the centerline of interior demising walls. This will in fact vary from the square footage that would be determined by using the description and definition of the "Engineering Area" set forth in the Declaration (which generally only includes the interior airspace between the perimeter walls and excludes interior structural components). For the square footage of the "Engineering Area" calculated in the manner set forth in the Declaration, as well as the area of the Unit measured as described herein but without the terrace, see Exhibit "3" to the Declaration. All square footages are approximate and may vary with actual construction. All floor plans and development plans are subject to change. Plans are not to scale. The survey of the units and the provisions of the Declaration of Condominium shall control in determining the boundaries and actual dimensions of the units. All fixtures, furniture, items of finish, and decorations are for display purposes only and will not be included with the unit. Consult the Agreement, the features list included on the back of this bi-fold floor plan and the prospectus for a description of the features which are to be included in the unit. The approximate size of the unit's terrace is 138 Sq Ft / 12.8 M.<sup>2</sup>



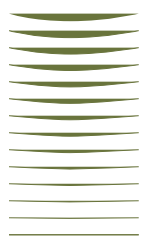
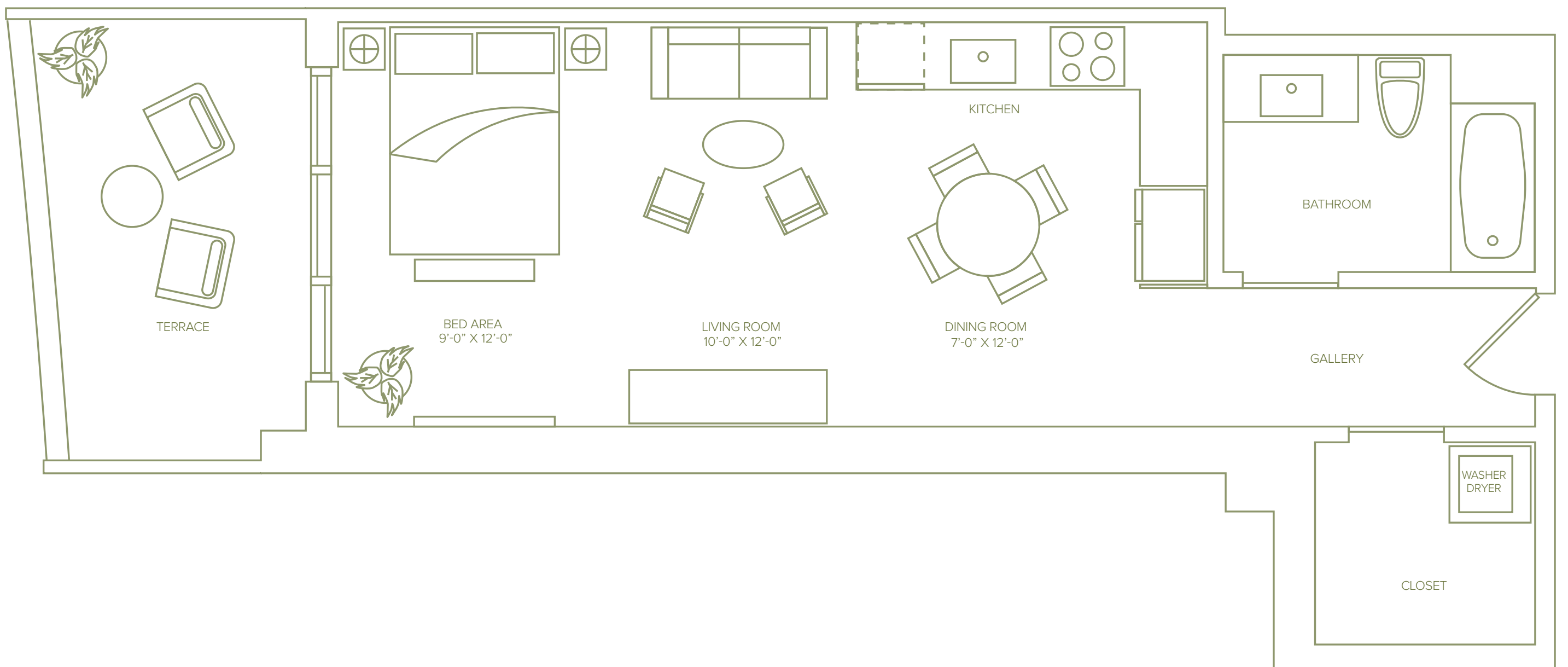
# UNIT 1

Line 10

Studio / 1 Bath

646 Sq Ft / 60.0 M<sup>2</sup>

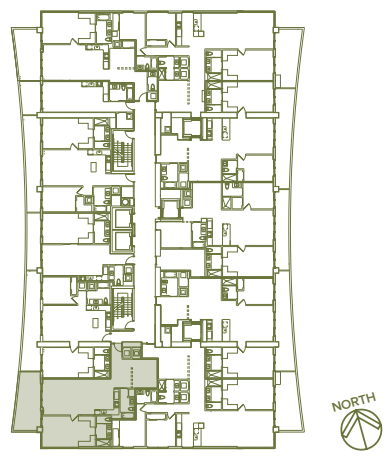
Including Terrace



## 1010 BRICKELL



Stated square footage includes the terrace of the Unit and is otherwise measured to the exterior boundaries of the exterior walls and the centerline of interior demising walls. This will in fact vary from the square footage that would be determined by using the description and definition of the "Engineering Area" set forth in the Declaration (which generally only includes the interior airspace between the perimeter walls and excludes interior structural components). For the square footage of the "Engineering Area" calculated in the manner set forth in the Declaration, as well as the area of the Unit measured as described herein but without the terrace, see Exhibit "3" to the Declaration. All square footages are approximate and may vary with actual construction. All floor plans and development plans are subject to change. Plans are not to scale. The survey of the units and the provisions of the Declaration of Condominium shall control in determining the boundaries and actual dimensions of the units. All fixtures, furniture, items of finish, and decorations are for display purposes only and will not be included with the unit. Consult the Agreement, the features list included on the back of this bi-fold floor plan and the prospectus for a description of the features which are to be included in the unit. The approximate size of the unit's terrace is 112 Sq Ft / 10.4 M.<sup>2</sup>



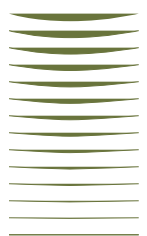
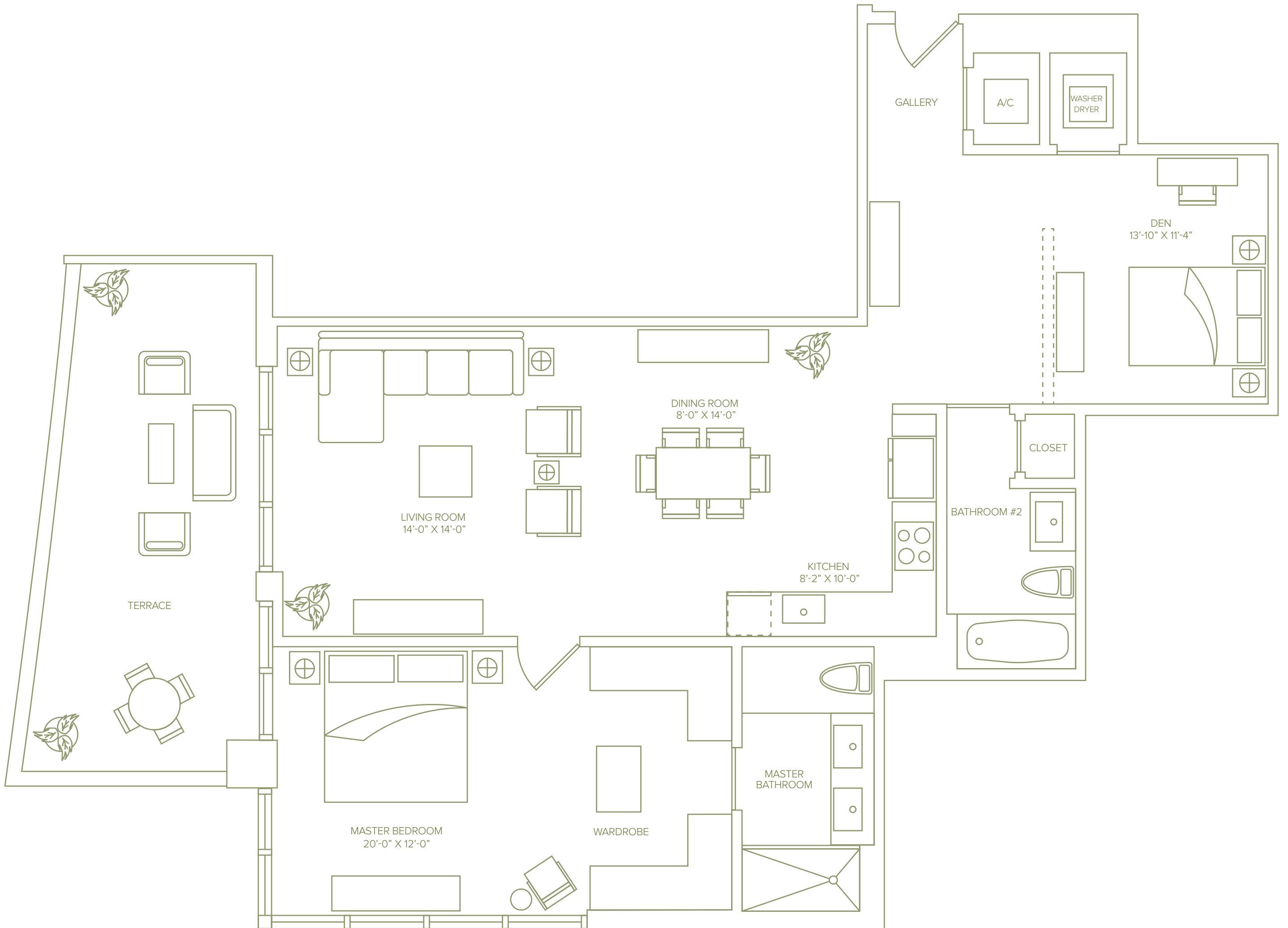
# UNIT J

Line 06

1 Bedroom + Den / 2 Baths

1,425 Sq Ft / 132.4 M<sup>2</sup>

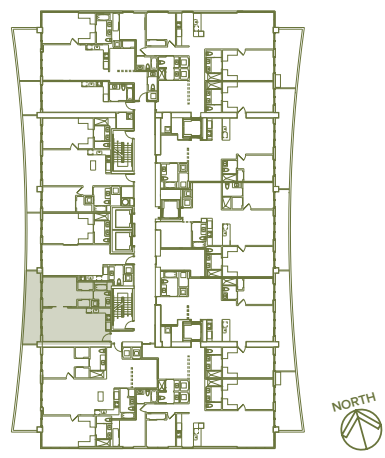
Including Terrace



## 1010 BRICKELL



Stated square footage includes the terrace of the Unit and is otherwise measured to the exterior boundaries of the exterior walls and the centerline of interior demising walls. This will in fact vary from the square footage that would be determined by using the description and definition of the "Engineering Area" set forth in the Declaration (which generally only includes the interior airspace between the perimeter walls and excludes interior structural components). For the square footage of the "Engineering Area" calculated in the manner set forth in the Declaration, as well as the area of the Unit measured as described herein but without the terrace, see Exhibit "3" to the Declaration. All square footages are approximate and may vary with actual construction. All floor plans and development plans are subject to change. Plans are not to scale. The survey of the units and the provisions of the Declaration of Condominium shall control in determining the boundaries and actual dimensions of the units. All fixtures, furniture, items of finish, and decorations are for display purposes only and will not be included with the unit. Consult the Agreement, the features list included on the back of this bi-fold floor plan and the prospectus for a description of the features which are to be included in the unit. The approximate size of the unit's terrace is 239 Sq Ft / 22.2 M<sup>2</sup>.



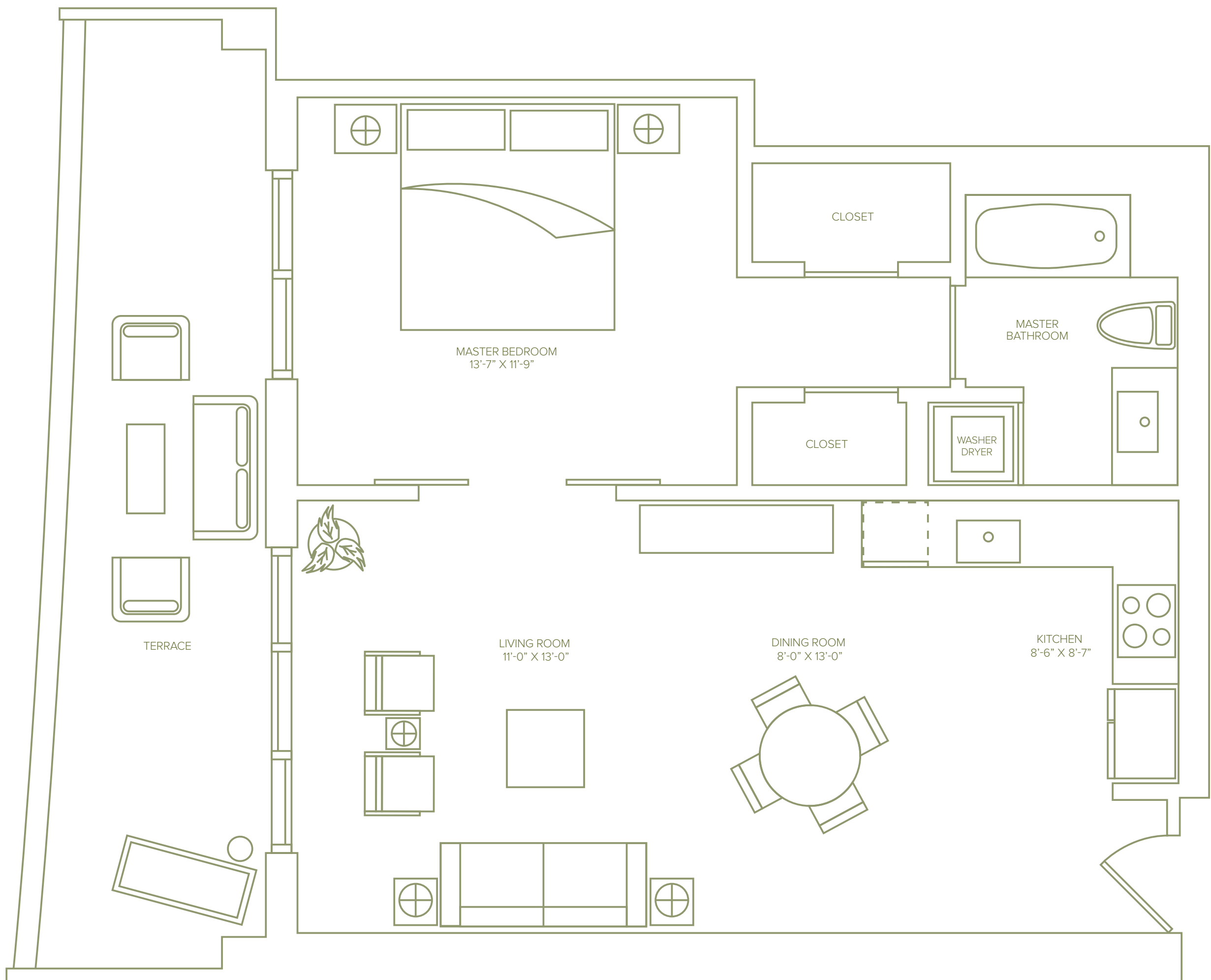
# UNIT K

Line 07

1 Bedroom / 1 Bath

930 Sq Ft / 86.4 M<sup>2</sup>

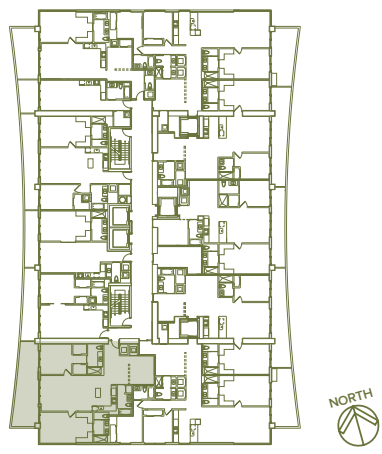
Including Terrace



## 1010 BRICKELL



Stated square footage includes the terrace of the Unit and is otherwise measured to the exterior boundaries of the exterior walls and the centerline of interior demising walls. This will in fact vary from the square footage that would be determined by using the description and definition of the "Engineering Area" set forth in the Declaration (which generally only includes the interior airspace between the perimeter walls and excludes interior structural components). For the square footage of the "Engineering Area" calculated in the manner set forth in the Declaration, as well as the area of the Unit measured as described herein but without the terrace, see Exhibit "3" to the Declaration. All square footages are approximate and may vary with actual construction. All floor plans and development plans are subject to change. Plans are not to scale. The survey of the units and the provisions of the Declaration of Condominium shall control in determining the boundaries and actual dimensions of the units. All fixtures, furniture, items of finish, and decorations are for display purposes only and will not be included with the unit. Consult the Agreement, the features list included on the back of this bi-fold floor plan and the prospectus for a description of the features which are to be included in the unit. The approximate size of the unit's terrace is 200 Sq Ft / 18.6 M<sup>2</sup>.



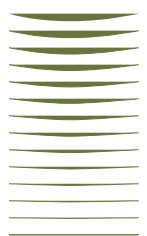
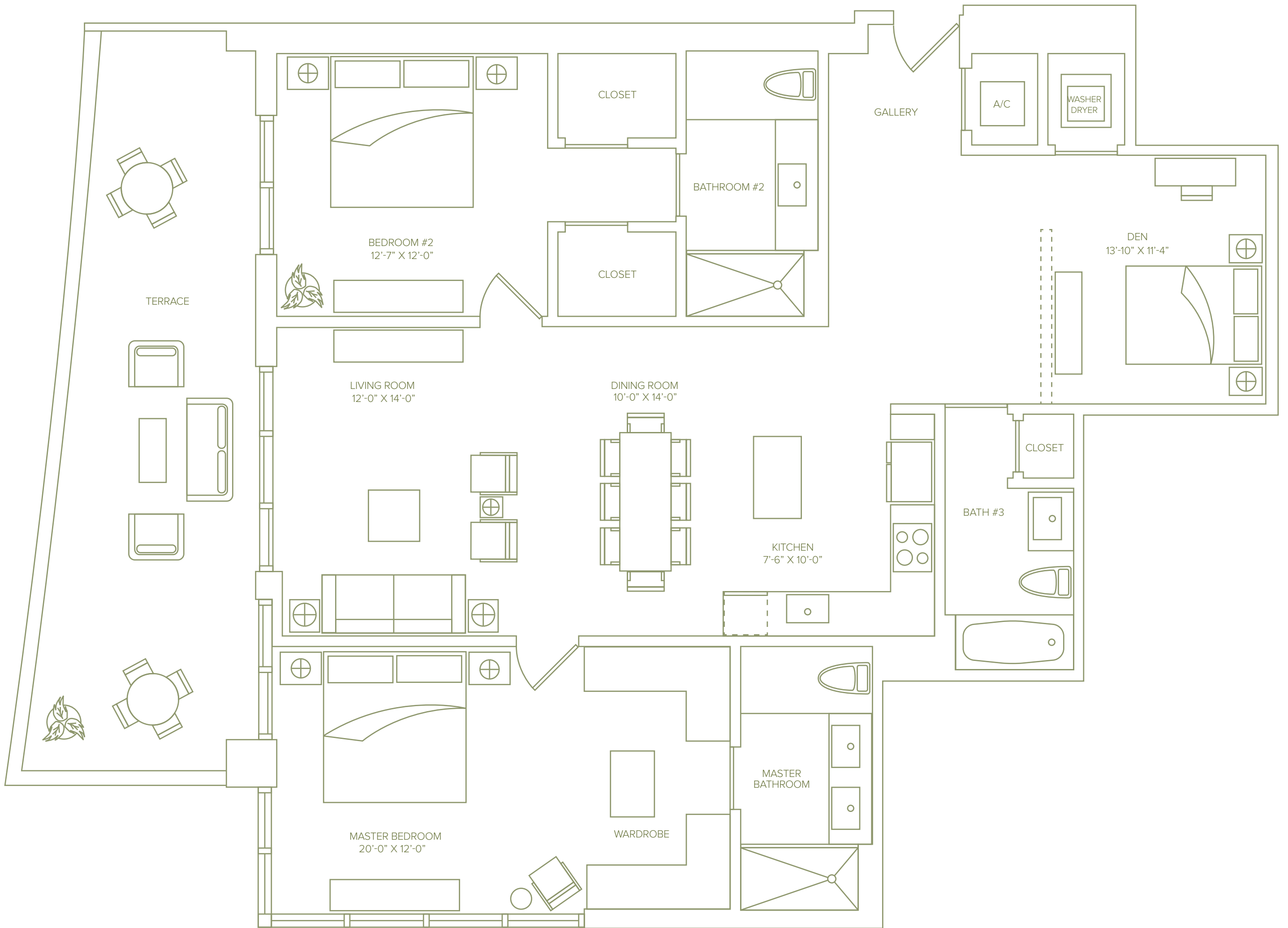
# UNIT L

Line 06

2 Bedrooms + Den / 3 Baths

1,880 Sq Ft / 174.7 M<sup>2</sup>

Including Terrace



## 1010 BRICKELL



Stated square footage includes the terrace of the Unit and is otherwise measured to the exterior boundaries of the exterior walls and the centerline of interior demising walls. This will in fact vary from the square footage that would be determined by using the description and definition of the "Engineering Area" set forth in the Declaration (which generally only includes the interior airspace between the perimeter walls and excludes interior structural components). For the square footage of the "Engineering Area" calculated in the manner set forth in the Declaration, as well as the area of the Unit measured as described herein but without the terrace, see Exhibit "3" to the Declaration. All square footages are approximate and may vary with actual construction. All floor plans and development plans are subject to change. Plans are not to scale. The survey of the units and the provisions of the Declaration of Condominium shall control in determining the boundaries and actual dimensions of the units. All fixtures, furniture, items of finish, and decorations are for display purposes only and will not be included with the unit. Consult the Agreement, the features list included on the back of this bi-fold floor plan and the prospectus for a description of the features which are to be included in the unit. The approximate size of the unit's terrace is 326 Sq Ft / 30.3 M<sup>2</sup>.