

RESIDENCE C MOD

A/C INTERIOR AREA	3,050 SQ. FT.	166.85 SQ. M.
TERRACE AREA	969 SQ. FT.	90.02 SQ. M.
TOTAL RESIDENCE	4,019 SQ. FT.	373.37 SQ. M.

3 BEDROOMS, 5.5 BATHROOMS, POWDER ROOM, GREAT ROOM, TWO PRIVATE TERRACES

FEATURES

- Private high-speed elevator access
- Breathtaking Atlantic Ocean and city views through floor-to-ceiling windows
- Eight-foot-high double-door entry to a spacious foyer
- Spacious interior floor plans with elegant smooth-finish ceilings rising to 10 feet (slab to slab, except where required to accommodate mechanical equipment)
- Expansive 10-foot-deep private balconies with glass railings
- Summer kitchen with under-counter Sub-Zero refrigerator
- Recessed lighting in select corridors and bathrooms
- Intelligent climate controls with digital thermostats
- Large capacity full size washer/dryer
- Smart building technology provides seamless access to select building amenities
- Pre-wired for audio speakers as well as motorized drapes and programmed lighting controls in select locations

KITCHEN

- Armani/Dada custom kitchen; lacquered cabinetries, treated glass backslashes and natural stone counter tops
- Sub-Zero refrigerator, freezer and wine cooler
- State-of-the-art Wolf appliances

MASTER SUITE

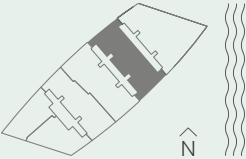
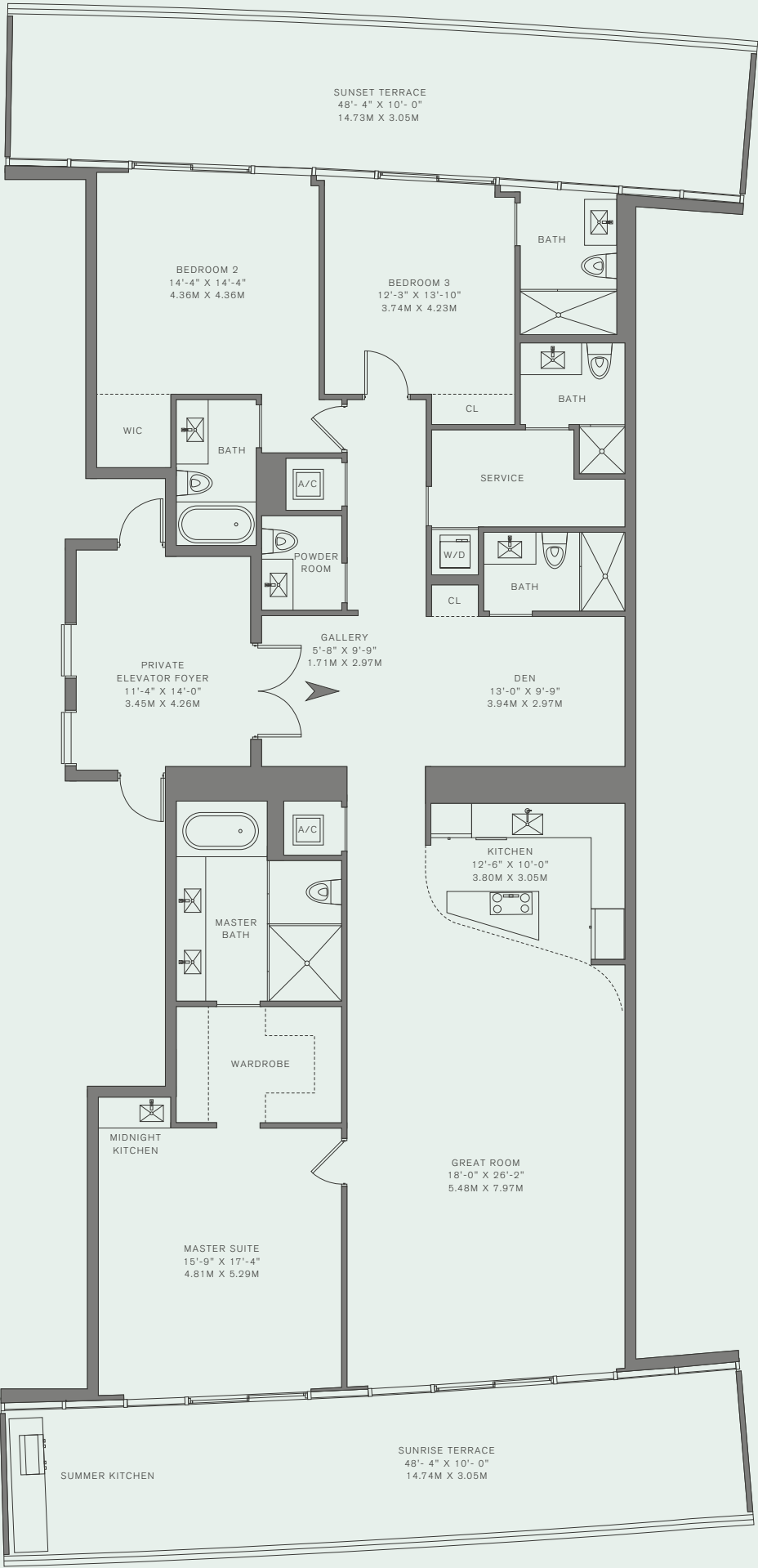
- Custom made midnight bar; natural stone counter top, subzero refrigerator
- Armani/Roca designed bathroom; custom made vanities with natural stone cladding, spacious showers and tub
- High-performance Toto Neorest toilet with integrated bidet technology

FINE POWDER ROOMS AND GUEST BATHROOMS

- Armani/Roca custom made vanities with natural stone cladding
- Marble stone floors
- Toto toilet



18975 COLLINS AVE, SUNNY ISLES BEACH, FL
RBACMIAMI.COM 786 629 1660 INFO@RBACMIAMI.COM



There are various methods for calculating the square footage of a Unit and depending on the method of calculation, the quoted square footage of a Unit may vary. The dimensions shown for this Unit floor plan have been calculated from the exterior boundaries of the exterior walls to the centerline of interior demising walls, including common elements such as structural walls and other interior structural components of the building; these dimensions are greater than the dimensions that would be determined by using the definition of "Unit" set forth in the Prospectus and the Declaration. The measurements of a room set forth on this floor plan are generally taken at the greatest points of each given room (as if the room were a perfect rectangle) without regard for any cubits and so, the actual room area will typically be smaller than the product obtained by multiplying the stated length by the stated width. All dimensions are approximate and may vary with actual construction. All floor plans are subject to change. Any furnishings or decor illustrated are not included with your Unit purchase and for the method for calculating your Unit dimensions. Consult the Prospectus for information regarding what is included with your Unit purchase and for the method for calculating your Unit dimensions.

RESIDENCE B

A/C INTERIOR AREA	3,176 SQ. FT.	292.06 SQ. M.
TERRACE AREA	886 SQ. FT.	82.31 SQ. M.
TOTAL RESIDENCE	4,062 SQ. FT.	377.37 SQ. M.

4 BEDROOMS, 5.5 BATHROOMS, POWDER ROOM, GREAT ROOM,
TWO PRIVATE TERRACES

FEATURES

- Private high-speed elevator access
- Breathtaking Atlantic Ocean and city views through floor-to-ceiling windows
- Eight-foot-high double-door entry to a spacious foyer
- Spacious interior floor plans with elegant smooth-finish ceilings rising to 10 feet (slab to slab, except where required to accommodate mechanical equipment)
- Expansive 10-foot-deep private balconies with glass railings
- Summer kitchen with under-counter Sub-Zero refrigerator
- Recessed lighting in select corridors and bathrooms
- Intelligent climate controls with digital thermostats
- Large capacity full size washer/dryer
- Smart building technology provides seamless access to select building amenities
- Pre-wired for audio speakers as well as motorized drapes and programmed lighting controls in select locations

KITCHEN

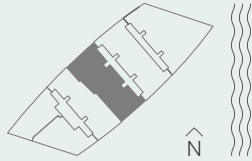
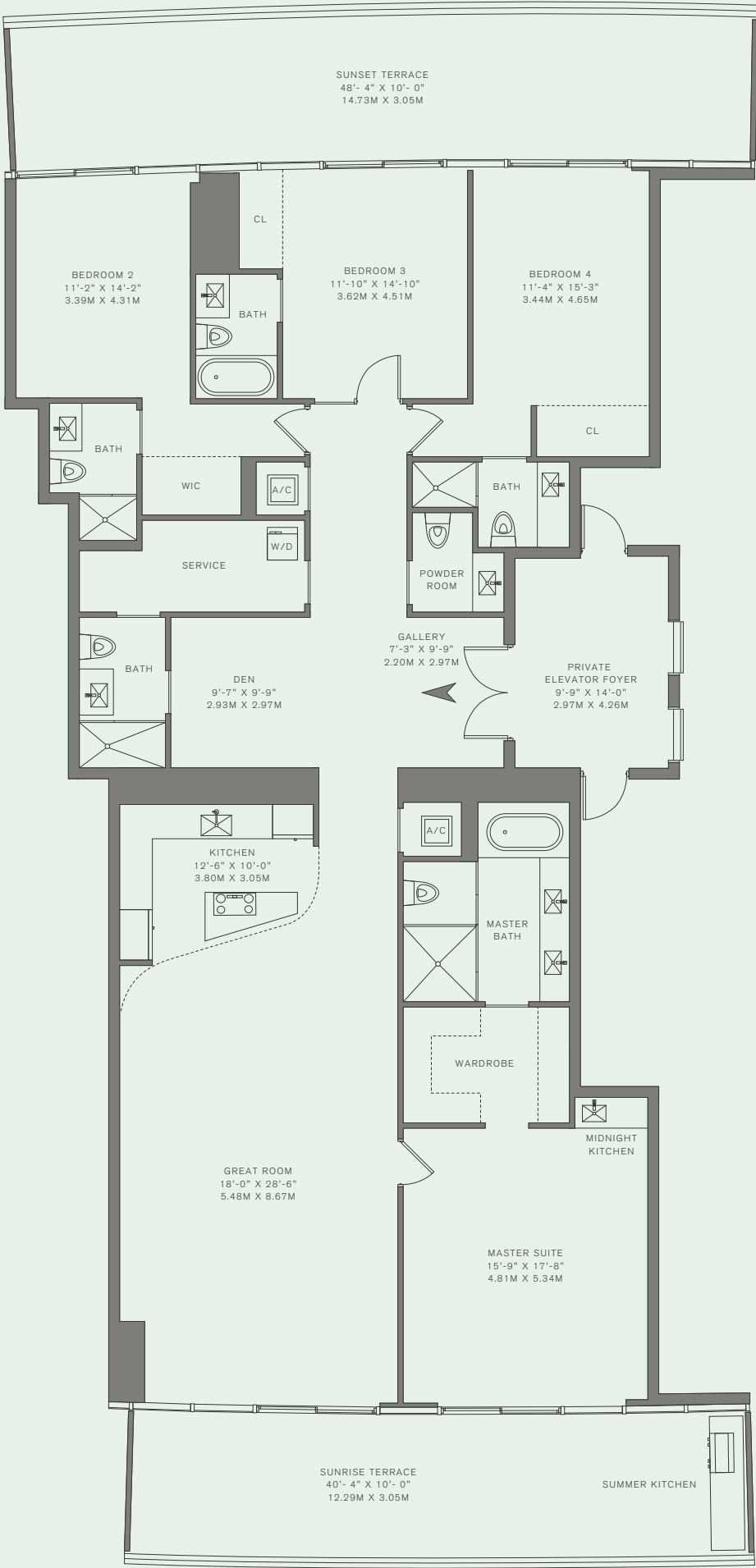
- Armani/Dada custom kitchen; lacquered cabinetries, treated glass backslashes and natural stone counter tops
- Sub-Zero refrigerator, freezer and wine cooler
- State-of-the-art Wolf appliances

MASTER SUITE

- Custom made midnight bar; natural stone counter top, subzero refrigerator
- Armani/Roca designed bathroom; custom made vanities with natural stone cladding, spacious showers and tub
- High-performance Toto Neorest toilet with integrated bidet technology

FINE POWDER ROOMS AND GUEST BATHROOMS

- Armani/Roca custom made vanities with natural stone cladding
- Marble stone floors
- Toto toilet



RESIDENCES BY
 ARMANI/CASA

18975 COLLINS AVE, SUNNY ISLES BEACH, FL
RBACMIAMI.COM 786 629 1660 INFO@RBACMIAMI.COM

There are various methods for calculating the square footage of a unit and depending on the method of calculation, the quoted square footage of a unit may vary. The dimensions shown for this unit floor plan have been calculated from the exterior boundaries of the exterior walls to the centerline of interior demising walls, including common elements such as structural walls and other interior structural components of the building; these dimensions are greater than the dimensions that would be determined by using the definition of "Unit" set forth in the Prospectus and the Declaration. The measurements of a room set forth on this floor plan are generally taken at the greatest points of each given room (as if the room were a perfect rectangle) without regard for any cuboids and so, the actual room area will typically be smaller than the product obtained by multiplying the stated length by the stated width. All dimensions are approximate and may vary with actual construction. All floor plans are subject to change. Any furnishings or decor illustrated are not included with your Unit purchase and for the method for calculating your Unit dimensions. Consult the Prospectus for information regarding what is included with your Unit purchase and for the method for calculating your Unit dimensions.

RESIDENCE C

A/C INTERIOR AREA	2,716 SQ. FT.	385.54 SQ. M.
TERRACE AREA	765 SQ. FT.	144.92 SQ. M.
TOTAL RESIDENCE	3,481 SQ. FT.	530.47 SQ. M.

3 BEDROOMS, 3.5 BATHROOMS, POWDER ROOM, GREAT ROOM,
TWO PRIVATE TERRACES

FEATURES

- Private high-speed elevator access
- Breathtaking Atlantic Ocean and city views through floor-to-ceiling windows
- Eight-foot-high double-door entry to a spacious foyer
- Spacious interior floor plans with elegant smooth-finish ceilings rising to 10 feet (slab to slab, except where required to accommodate mechanical equipment)
- Expansive 10-foot-deep private balconies with glass railings
- Summer kitchen with under-counter Sub-Zero refrigerator
- Recessed lighting in select corridors and bathrooms
- Intelligent climate controls with digital thermostats
- Large capacity full size washer/dryer
- Smart building technology provides seamless access to select building amenities
- Pre-wired for audio speakers as well as motorized drapes and programmed lighting controls in select locations

KITCHEN

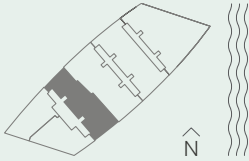
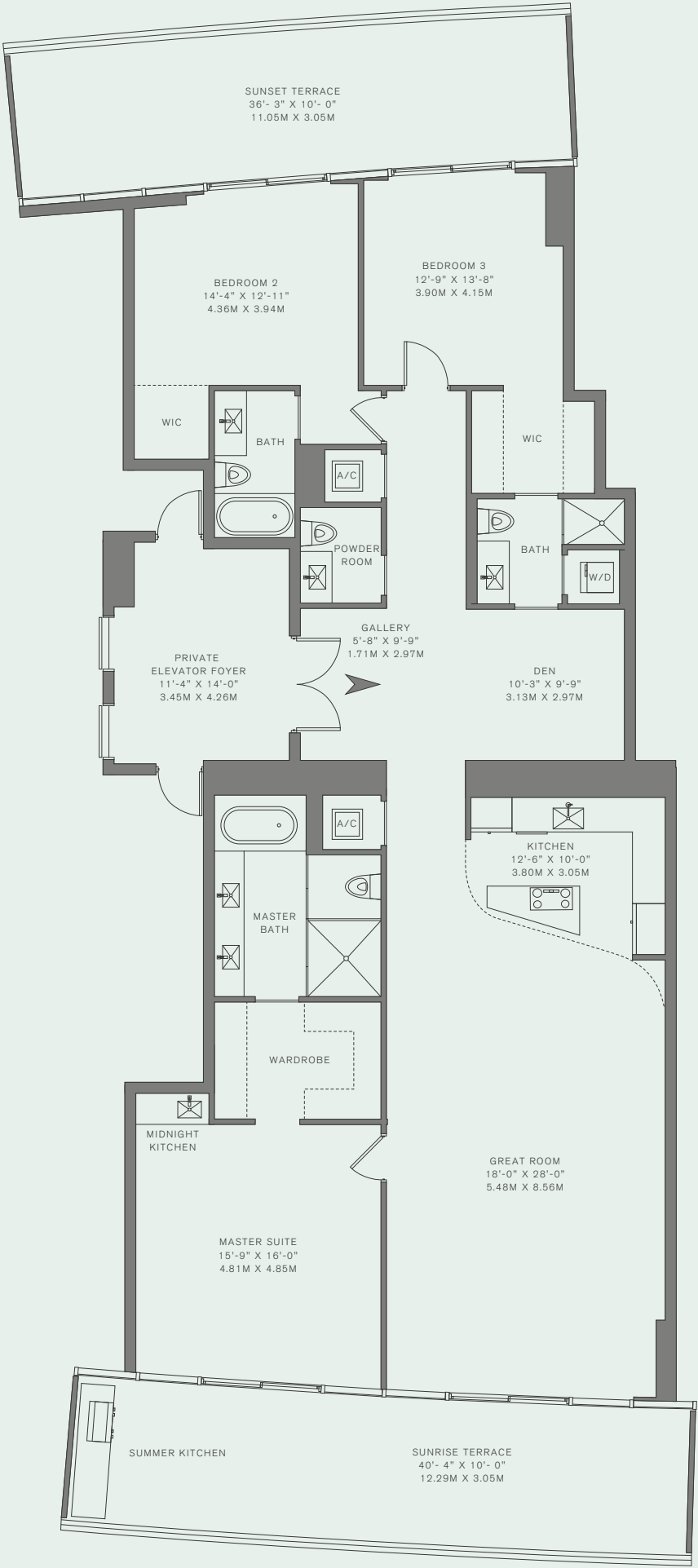
- Armani/Dada custom kitchen; lacquered cabinetries, treated glass backslashes and natural stone counter tops
- Sub-Zero refrigerator, freezer and wine cooler
- State-of-the-art Wolf appliances

MASTER SUITE

- Custom made midnight bar; natural stone counter top, subzero refrigerator
- His and hers bathrooms
- Armani/Roca designed bathroom; custom made vanities with natural stone cladding, spacious showers and tub
- High-performance Toto Neorest toilet with integrated bidet technology

FINE POWDER ROOMS AND GUEST BATHROOMS

- Armani/Roca custom made vanities with natural stone cladding
- Marble stone floors
- Toto toilet



RESIDENCES BY
 ARMANI/CASA

18975 COLLINS AVE, SUNNY ISLES BEACH, FL
RBACMIAMI.COM 786 629 1660 INFO@RBACMIAMI.COM

There are various methods for calculating the square footage of a Unit and depending on the method of calculation, the quoted square footage of a Unit may vary. The dimensions shown for this Unit floor plan have been calculated from the exterior boundaries of the exterior walls to the centerline of interior demising walls, including common elements such as structural walls and other interior structural components of the building; these dimensions are greater than the dimensions that would be determined by using the definition of "Unit" set forth in the Prospectus and the Declaration. The measurements of a room set forth on this floor plan are generally taken at the greatest points of each given room (as if the room were a perfect rectangle) without regard for any cutouts and so, the actual room area will typically be smaller than the product obtained by multiplying the stated length by the stated width. All dimensions are approximate and may vary with actual construction. All floor plans are subject to change. Any furnishings or decor illustrated are not included with your Unit purchase and for the method for calculating your Unit dimensions.