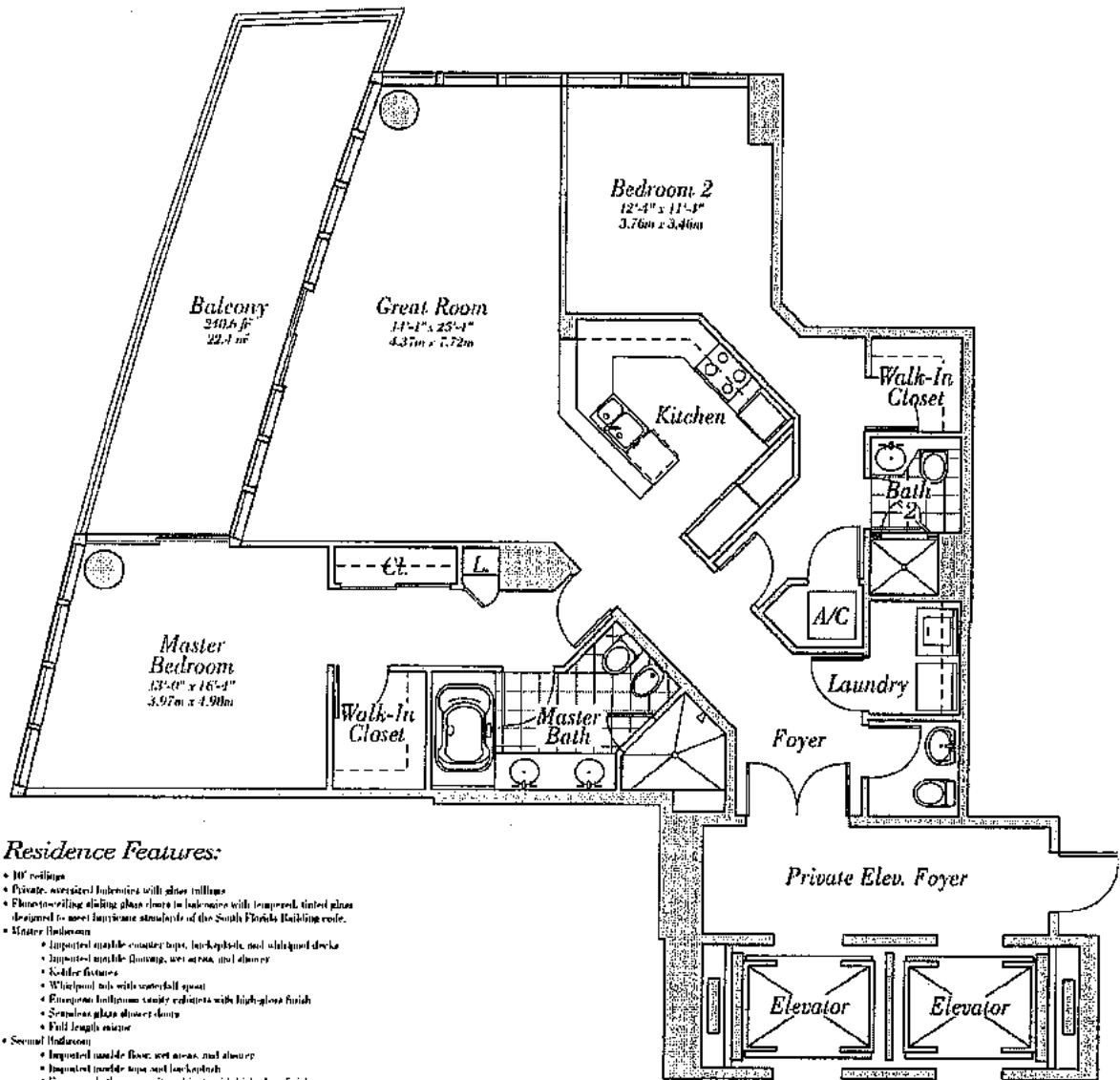


Residence 01

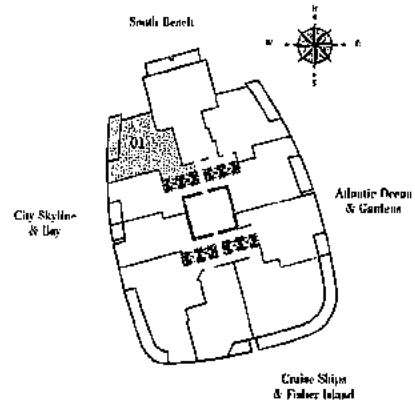
Floors 5-29

2 Bedrooms, 2 Baths, Powder Room
1,591 s.f. 147.9m²



Residence Features:

- 10' ceilings
- Private, oversized balconies with glass railings
- Floor-to-ceiling sliding glass doors to balconies with tempered, tinted glass designed to meet hurricane standards of the South Florida Building code.
- **Master Bedroom:**
 - Imported marble counter tops, back-splash, and stainless steel
 - Imported marble flooring, wet area, and shower
 - Coffered ceiling
 - Wheelchair tub with waterfall spout
 - European bathroom vanity cabinets with high-gloss finish
 - Seamless glass shower doors
 - Full length mirror
- **Second Bedroom:**
 - Imported marble floor, wet area, and shower
 - Imported marble tops and back-splash
 - European bathroom vanity cabinets with high-gloss finish
 - Glass enclosure for shower stalls
- **Powder Room:**
 - Solid fixtures
 - Polished sink
- **Kitchen:**
 - Custom, imported European cabinetry
 - Granite counter-tops and back-splash
 - Under-cabinet lighting
 - Variable speed, convection range hood
 - Stainless 48" built-in refrigerator-freezer
 - Marble top horizontal cooking
 - Marble-clay tile counter island w/ oven
 - Marble imported tile/mosaic
 - Kitchen island full bar w/ stainless steel
 - Wine chiller in select residences
 - Single-level layout with pull-out pantry
- **Laundry:**
 - Miele Neptune front-load washer
 - Miele Neptune front-load electric dryer
- Pre-wiring for multiple telephone lines
- Pre-wiring for security systems
- Pre-wiring for cable TV
- Built-in microwave hood over stove
- Soft-close wood interior doors

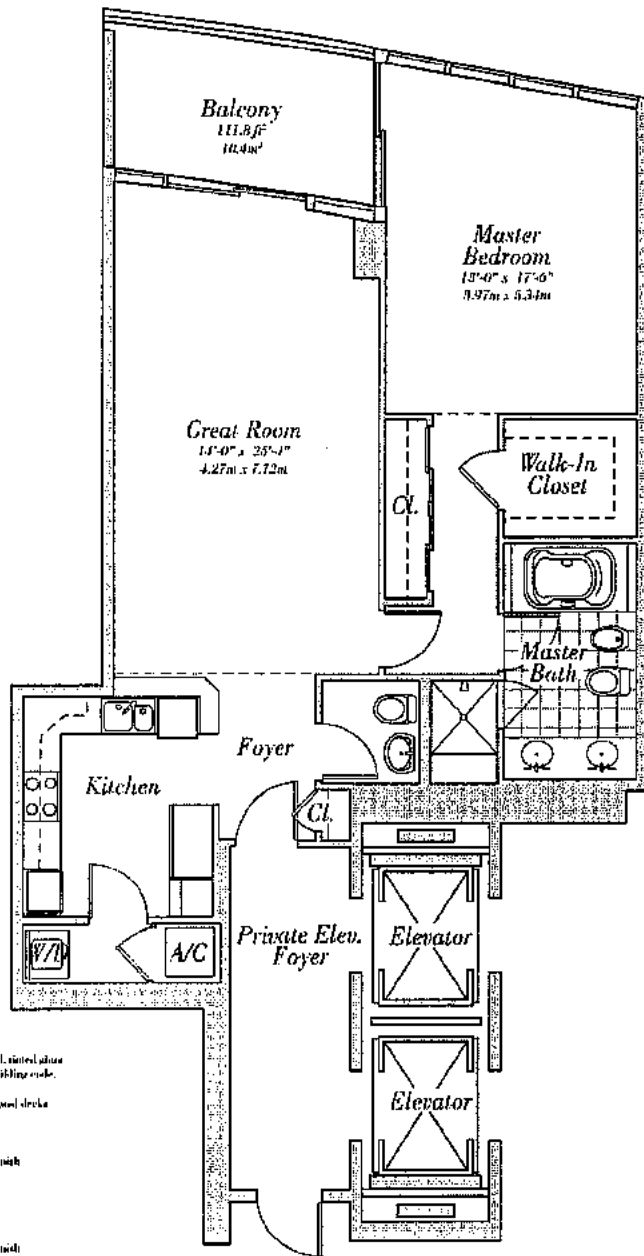


CONTINUUM
ON SOUTH BEACH

Residence 02

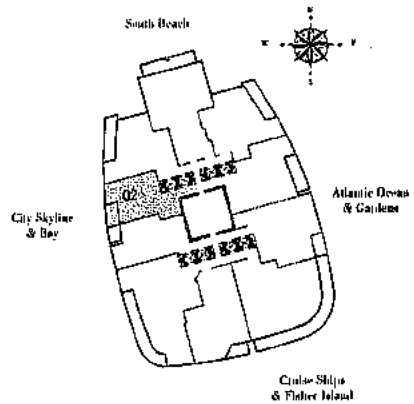
Floors 5-26

1 Bedroom, 1 Bath, Powder Room
1,201 s.f. 111.6m²



Residence Features:

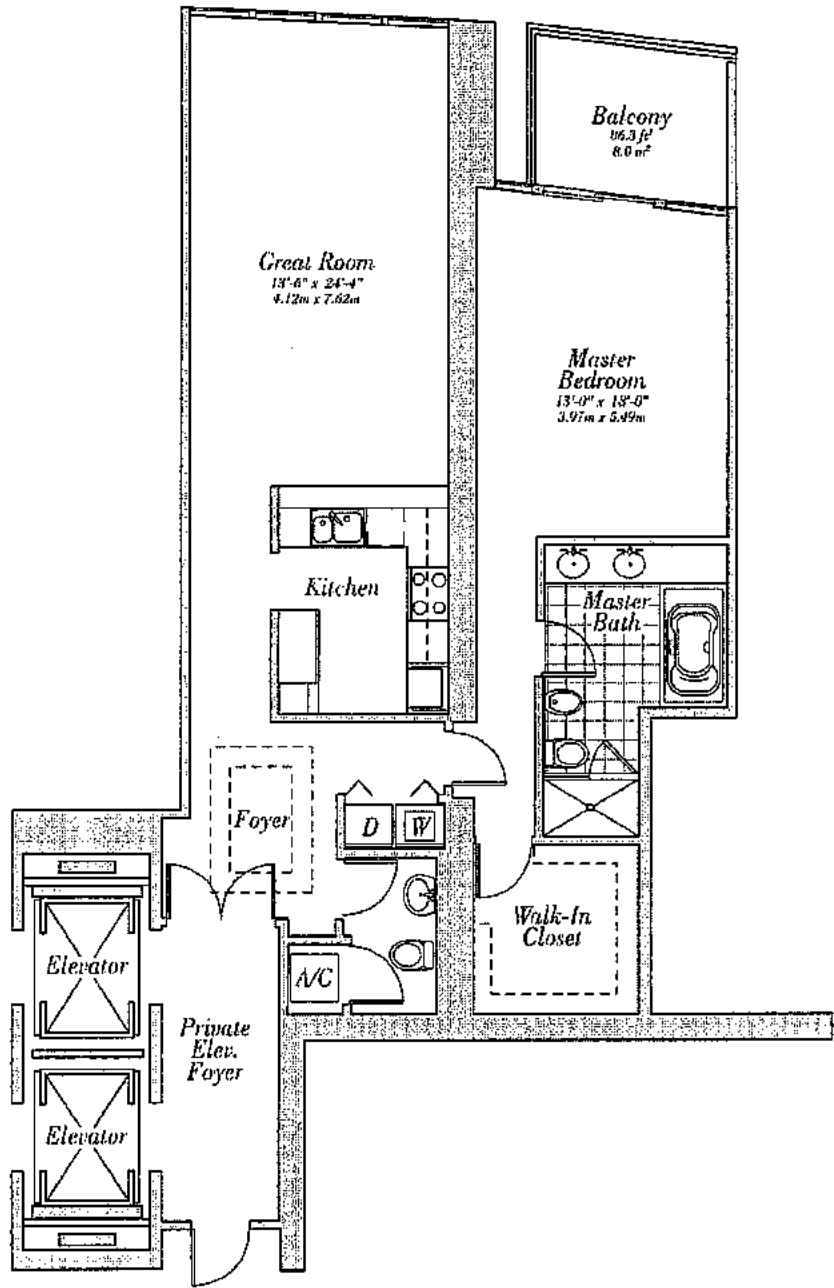
- 11' ceilings
- Private, oversized balconies with glass railings
- Floor-to-ceiling sliding glass doors to balconies with tempered, tinted glass
- Designed to meet hurricane standards of the South Florida Building code.
- Master Bathroom
 - Impacted marble counter tops, back splash, and mirrored decks
 - Impacted marble flooring, wet area, and shower
 - Kohler fixtures
 - Whirlpool tub with waterfall spout
 - European bathroom vanity cabinets with high-gloss finish
 - Seamless glass shower doors
 - Full-length mirror
- Second Bathroom
 - Impacted marble floor, wet area, and shower
 - Impacted marble top and back splash
 - European bathroom vanity cabinets with high-gloss finish
 - Glass enclosure for shower stalls
- Powder Room
 - Kohler fixtures
 - Pedestal sink
- Kitchen
 - Custom, impacted European cabinetry
 - Granite countertops and back splash
 - Under-cabinet lighting
 - Stainless steel, circulating range hood
 - Side-zero-draft built-in refrigerator/freezer
 - Miele touch-control cooktop
 - Miele electric conventional oven
 - Miele integrated dishwasher
 - Biometric full-size microwave oven
 - Wine chiller in select residences
 - Single-lever faucet with pull-out spray
- Laundry
 - Having Neptune front-load washer
 - Having Neptune front load electric dryer
- Pre-wiring for multiple telephone lines
- Pre-wiring for security systems
- Pre-wiring for cable TV
- Bell multi-line wood entry doors
- Solid-core wood interior doors



CONTINUUM
ON SOUTH BEACH

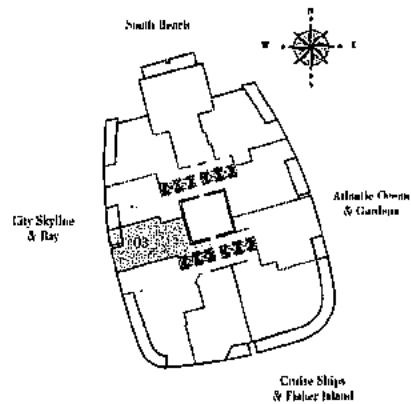
Residence 03

Flours 5-26
 1 Bedroom, 1 Bath
 1,365 s.f. 126.9m²



Residence Features:

- 10' ceilings
- Private, oversized balconies with glass railings
- Floor-to-ceiling sliding glass doors to balconies with tempered, tinted glass designed to meet hurricane standards of the South Florida Building Code.
- Master Bedroom
 - Imported marble counter tops, backsplash and whirlpool deck
 - Imported marble flooring, wet areas, and shower
 - Kohler fixtures
 - Whirlpool tub with waterfall spout
 - European bathroom vanity cabinets with high-gloss finish
 - Seamless glass shower door
 - Full length mirror
- Second Bathroom
 - Imported marble floor, wet areas, and shower
 - Imported marble top and backsplash
 - European bathroom vanity cabinets with high-gloss finish
 - Glass enclosure for shower stall
- Powder Room
 - Kohler fixtures
 - Porcelain sink
- Kitchen
 - Custom, imported European cabinetry
 - Granite countertop and backsplash
 - Under-cabinet lighting
 - Variable speed, recirculating range hood
 - Subzero 48" built-in refrigerator/freezer
 - Wide mechanical casework
 - Wide electric conventional oven
 - Built-in integrated dishwasher
 - KitchenAid full-size dishwasher oven
 - Wine chiller in select residences
 - Single-door freezer with pullout spray
- Laundry
 - Staying Neptune front-load washer
 - Staying Neptune front load electric dryer
- Provision for multiple telephone lines
- Provision for security systems
- Provision for cable TV
- Built-in microwave wall entry door
- Subzero wood interior door

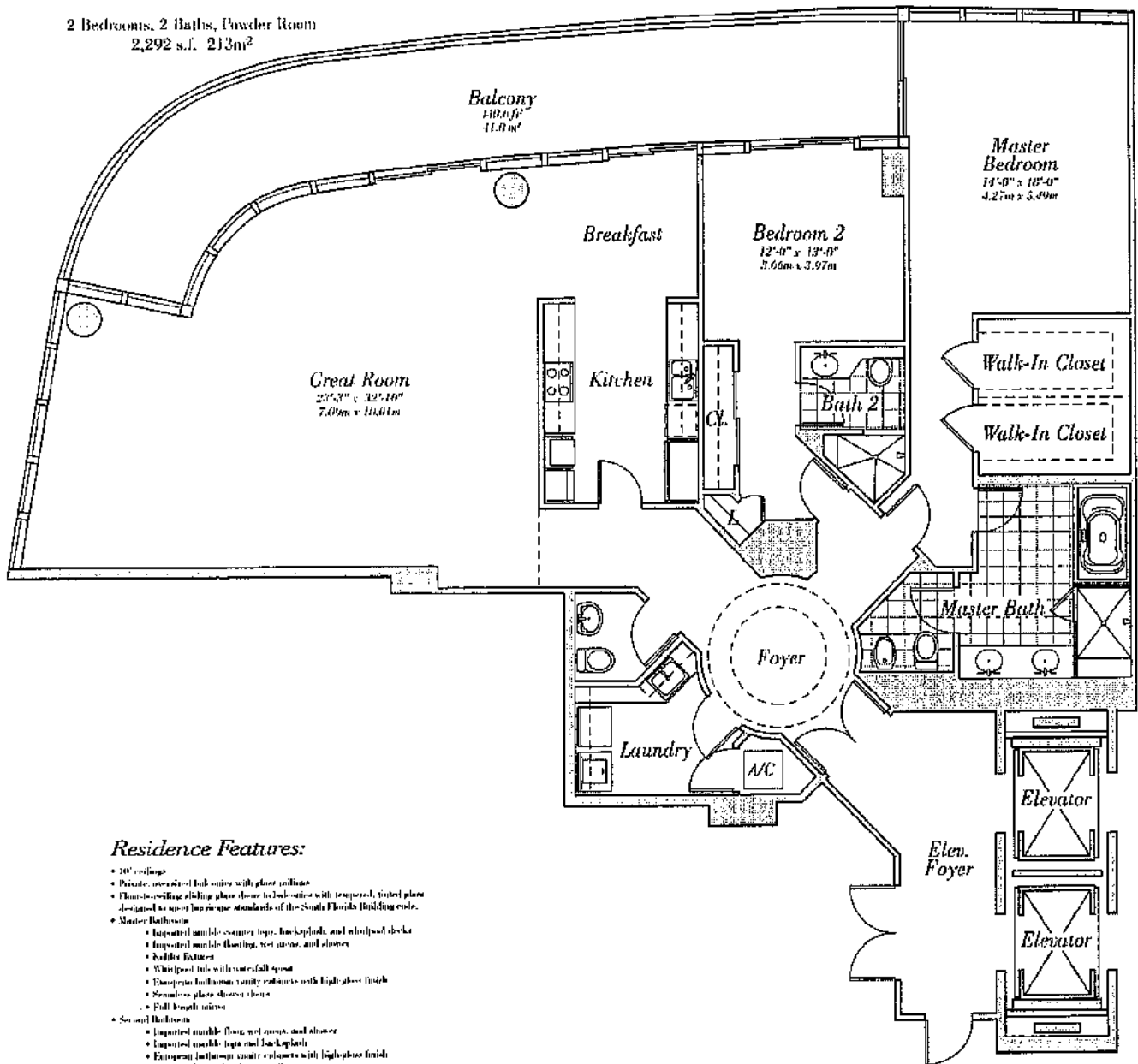


CONTINUUM
 ON SOUTH BEACH

Residence 04

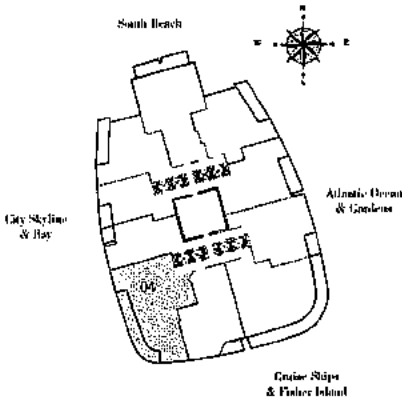
Floors 5-26

2 Bedrooms, 2 Baths, Powder Room
2,292 s.f. 213m²



Residence Features:

- 10' ceilings
- Private, oversized balconies with glass railings
- Floor-to-ceiling sliding glass doors to balconies with tempered, tinted glass designed to meet the same standards of the South Florida Building code.
- Master Bathroom
 - Imported marble vanity counter top, backplash, and whirlpool deck
 - Imported marble flooring, wet areas, and shower
 - Kohler fixtures
 - Whirlpool tub with waterfall spout
 - European bathroom vanity cabinets with high-gloss finish
 - Remolux glass shower doors
 - Full length mirror
- Second Bathroom
 - Imported marble floor, wet areas, and shower
 - Imported marble tops and backplash
 - European bathroom vanity cabinets with high-gloss finish
 - Glass enclosure for shower stalls
- Powder Room
 - Kohler fixtures
 - Porcelain sink
- Kitchen
 - Custom, imported European cabinets
 - Granite countertop and backplash
 - Undercounter lighting
 - Variable speed, revolving range hood
 - Sub-zero 48" built-in refrigerator-freezer
 - Microwave oven
 - Aisle electric convection oven
 - Aisle integrated dishwasher
 - Kitchen island (full-size) with granite top
 - Wine chiller in select residences
 - Single doors (two) with pull-out spout
- Laundry
 - Miele Neptune front-load washer
 - Miele Neptune front load electric dryer
- Pre-wiring for multiple telephone lines
- Pre-wiring for security system
- Pre-wiring for cable TV
- Infrared heat wood entry doors
- Solid-core wood entry doors



CONTINUUM
ON SOUTH BEACH

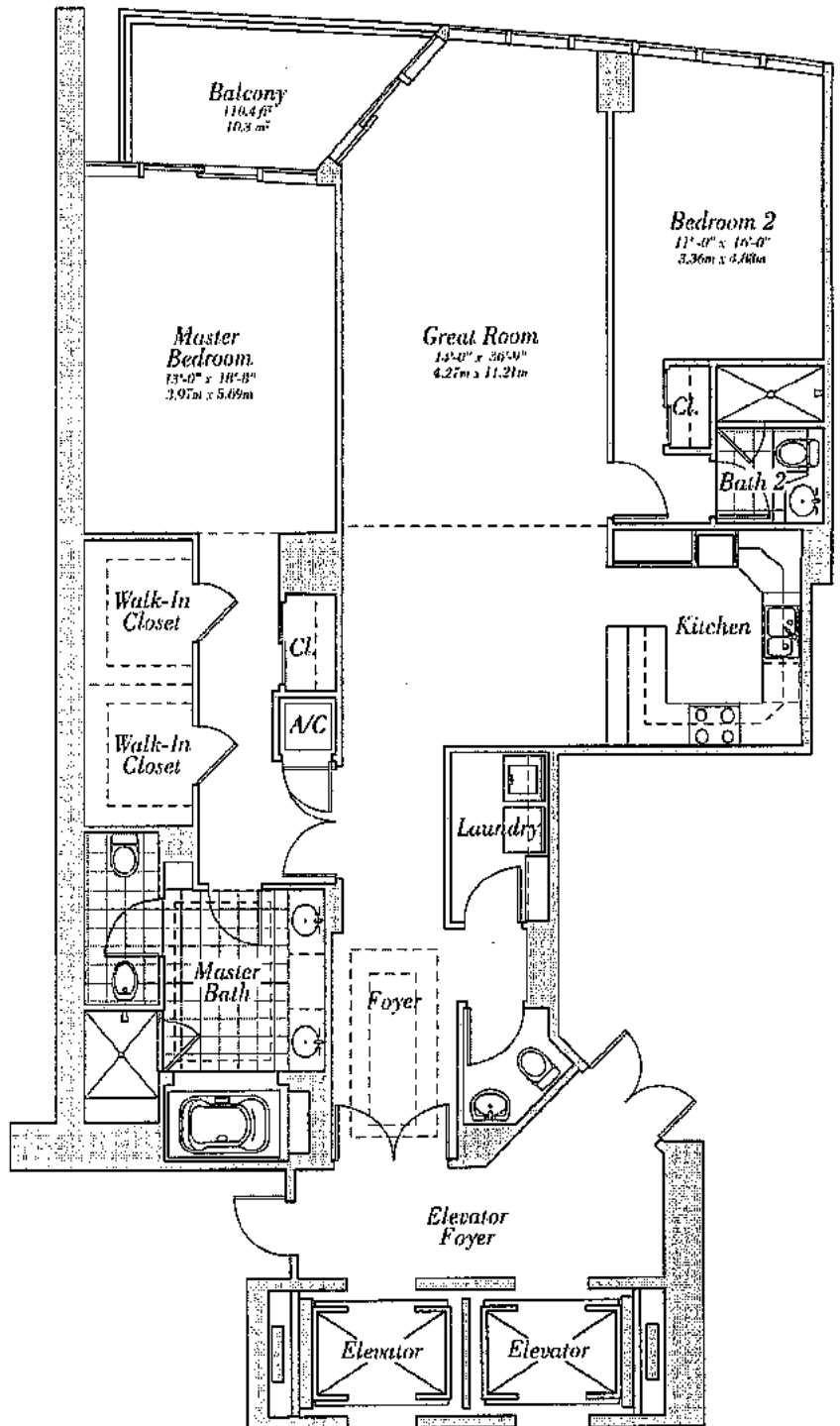
Residence 05

Floors 5-26

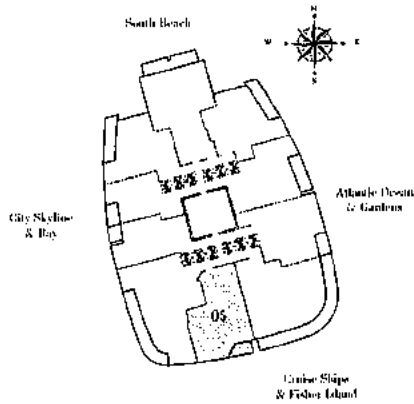
2 Bedrooms, 2 Baths, Powder Room
1,869 s.f. 173.7m²

Residence Features:

- 10' ceilings
- Private, oversized balconies with glass railings
- Floor-to-ceiling sliding glass doors to balconies with tempered, tinted glass designed to meet hurricane standards of the South Florida Building code.
- Master Bedroom
 - Imported marble counter tops, backsplash, and vanity cabinets
 - Imported marble flooring, wet areas, and shower
 - Kohler fixtures
 - Whirlpool tub with waterfall spout
 - European bathroom vanity cabinets with high-gloss finish
 - Seamless glass shower doors
 - Full length mirror
- Second Bathroom
 - Imported marble floor, wet areas, and shower
 - Imported marble tops and backsplash
 - European bathroom vanity cabinets with high-gloss finish
 - Glass enclosure for shower stalls
- Powder Room
 - Kohler fixtures
 - Pedestal sink
- Kitchen
 - Custom, imported European cabinetry
 - Granite countertops and backsplash
 - Under-counter lighting
 - Variable speed, recirculating water hood
 - Sub-zero 40" built-in refrigerator-freezer
 - Miele touch-control cooktop
 - Miele electric convection oven
 - Miele integrated dishwasher
 - KitchenAid full-size microwave oven
 - Wine chiller in cabinet enclosure
 - Single-door trash can with pull-out apron
- Laundry
 - Mating Neptune front-load washer
 - Mating Neptune front-load electric dryer
- Pre-wiring for multiple telephone lines
- Pre-wiring for security systems
- Pre-wiring for cable TV
- Soft pull-out wood entry doors
- Self-storing wood interior doors



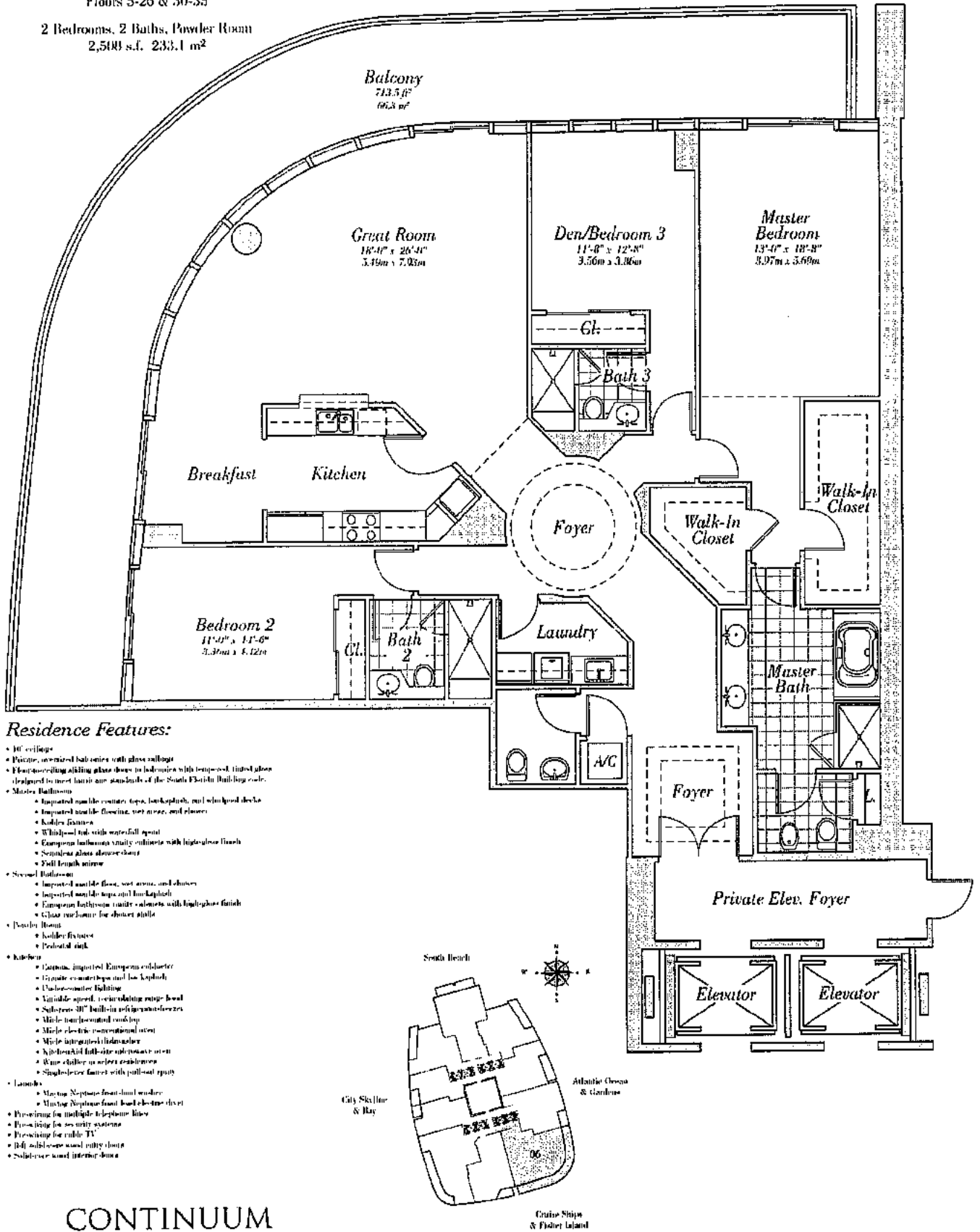
CONTINUUM
ON SOUTH BEACH



Residence 06

Floors 5-26 & 30-35

2 Bedrooms, 2 Baths, Powder Room
2,500 s.f. 233.1 m²



Residence Features:

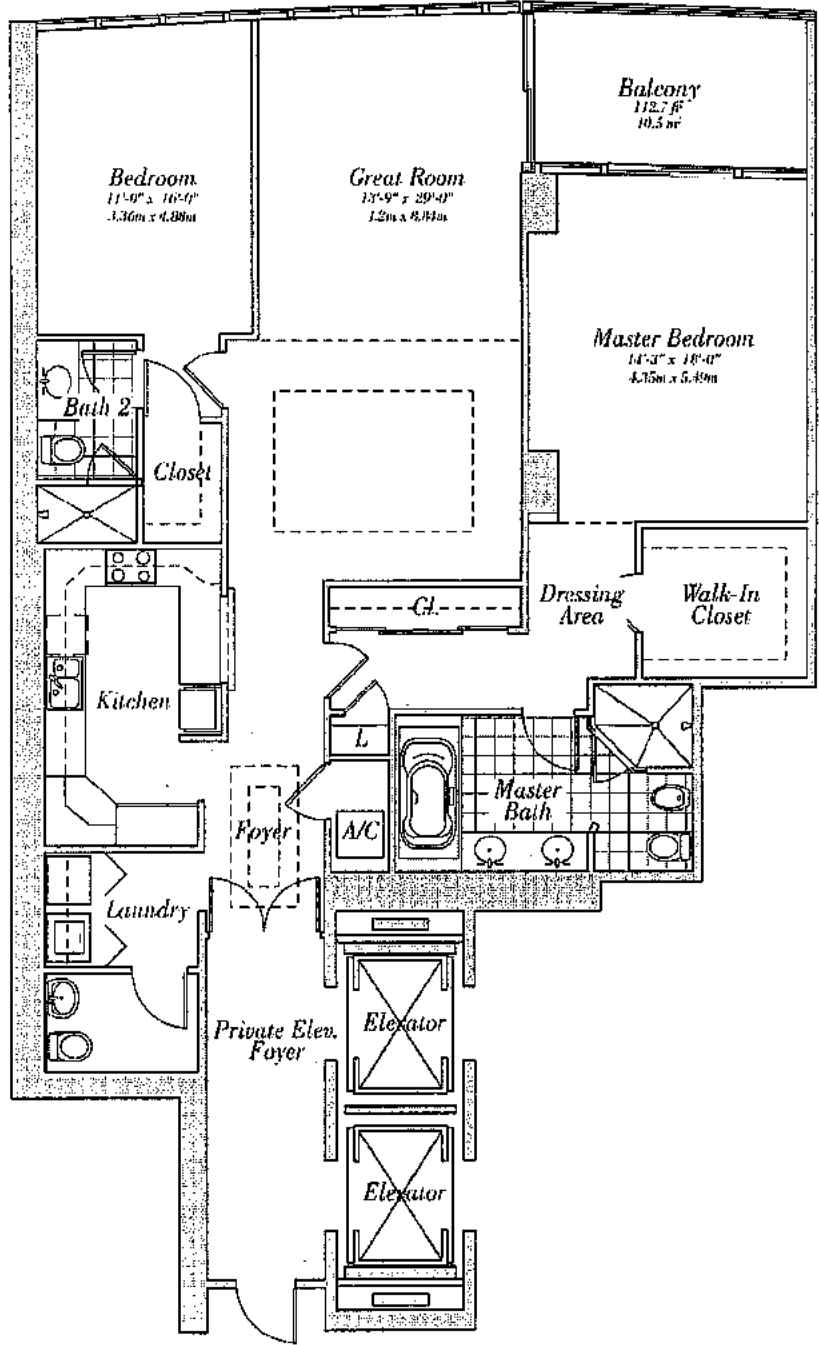
- 10 ceilings
- Private, oversized balconies with glass railings
- Floor-to-ceiling sliding glass doors in bedrooms with tempered, tinted glass designed to meet Miami and standards of the South Florida Building Code.
- Master Bathrooms
 - Imported marble counter tops, backplish, and solidwood vanity
 - Imported marble flooring, vani stone, and pliers
 - Kohler fixtures
 - Whirlpool tub with waterfall spout
 - European bathroom vanity cabinets with light-colored finish
 - Seamless glass shower doors
 - Full length mirror
- Second Bathrooms
 - Imported marble floor, vani stone, and showers
 - Imported marble tops and backplish
 - European bathroom vanity cabinets with light-colored finish
 - Glass enclosure for shower stalls
- Powder Room
 - Kohler fixtures
 - Porcelain sink
- Kitchen
 - Custom imported European cabinet
 - Granite counter tops and backplish
 - Under-counter lighting
 - Variable speed, variable torque range hood
 - Solid-core 30" built-in refrigerator/freezer
 - Marble top/paneled cooking
 - Marble electric conventional oven
 - Marble integrated dishwasher
 - Hybrid solid full-size dishwasher oven
 - Wine chiller in select residences
 - Single-door pantry with pull-out tray
- Landings
 - Matching Neptuno front door window
 - Matching Neptuno front door electronic chime
- Pre-wiring for multiple telephone lines
- Pre-wiring for security systems
- Pre-wiring for cable TV
- 800 solid-core wood entry doors
- Solid-core wood interior doors

CONTINUUM
ON SOUTH BEACH

Residence 07

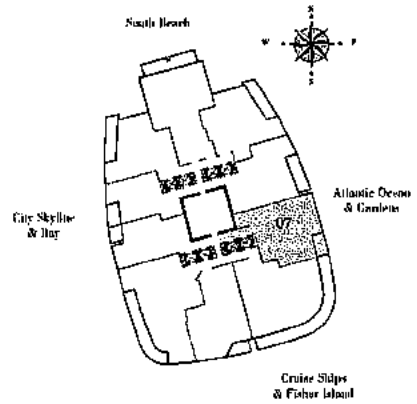
Floors 5-35

2 Bedrooms, 2 Baths, Powder Room
1,070 s.f. 173.8 m²



Residence Features:

- 10 ceilings
- Private, oversized balconies with glass railings
- Floor-to-ceiling sliding glass doors to balconies with tempered, tinted glass designed to meet hurricane standards of the South Florida Building Code.
- Master Bathroom
 - Imported marble counter tops, backsplash, and whirlpool deck
 - Imported marble flooring, wet areas, and shower
 - Kohler fixtures
 - Whirlpool tub with waterfall spout
 - European bathroom vanity cabinets with high-gloss finish
 - Seamless glass shower doors
 - Full length mirror
- Second Bathroom
 - Imported marble floor, wet areas, and shower
 - Imported marble tops and backsplash
 - European bathroom vanity cabinets with high-gloss finish
 - Glass enclosure for shower stalls
- Powder Room
 - Kohler fixtures
 - Pedestal sink
- Kitchen
 - Custom, imported European cabinets
 - Granite counter tops and backsplash
 - Under-counter lighting
 - Variable speed, variable-torque motor hood
 - Subzero 40" built-in refrigerator-freezer
 - Miele touch-control cooking
 - Miele electric conventional oven
 - Miele integrated dishwasher
 - Kitchen island full-size microwave oven
 - Wine chiller in select configurations
 - Single-level faucet with pull-out spray
- Laundry
 - Master Nycapre front-load washer
 - Sliding Nycapre front-load electric dryer
- Provision for multiple telephone lines
- Provision for security systems
- Provision for cable-TV
- 8-ft walk-in closet entry doors
- Schedule wood interior doors

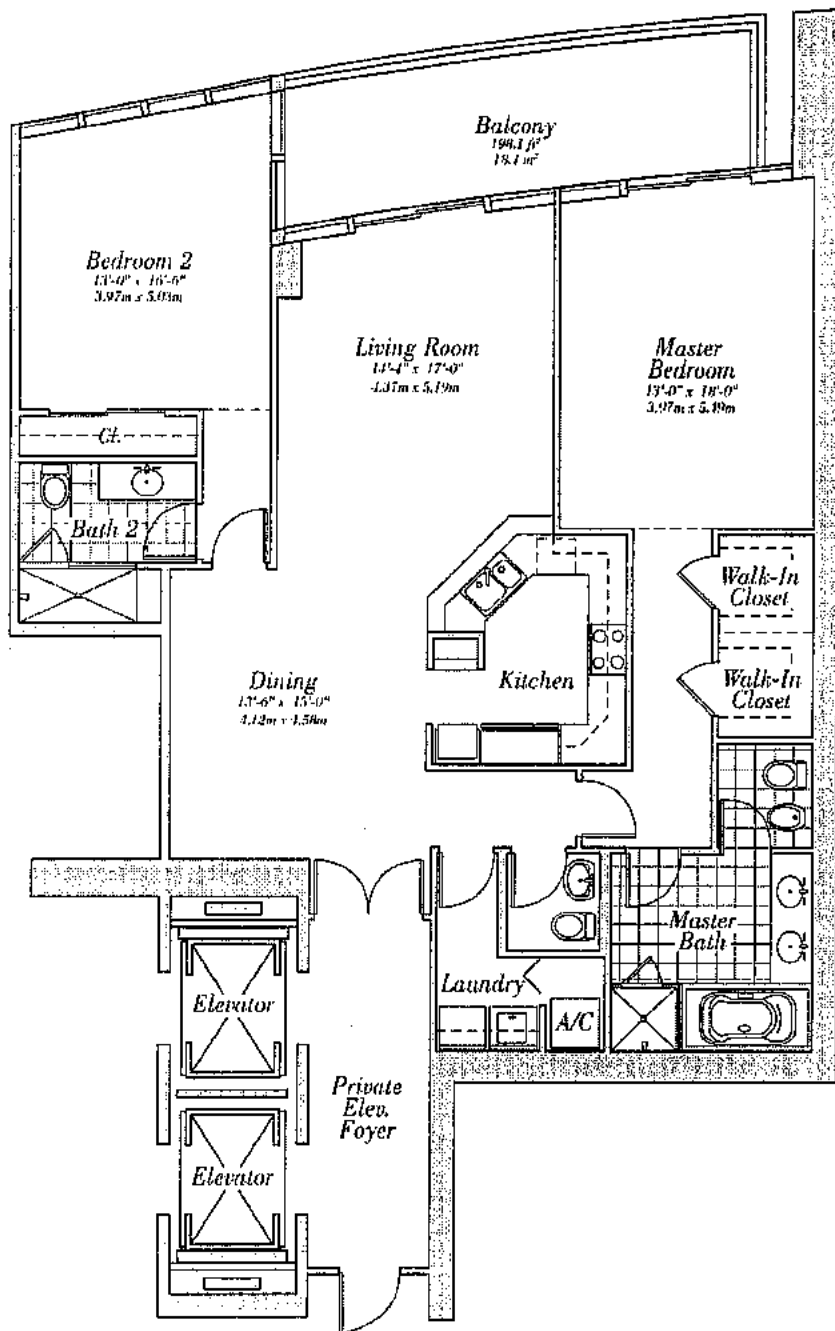


CONTINUUM
ON SOUTH BEACH

Residence 08

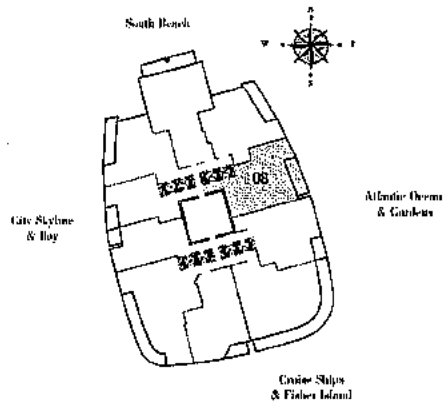
Floors 5-29

2 Bedrooms, 2 Baths, Powder Room
1,757 s.f. 163.3 m²



Residence Features:

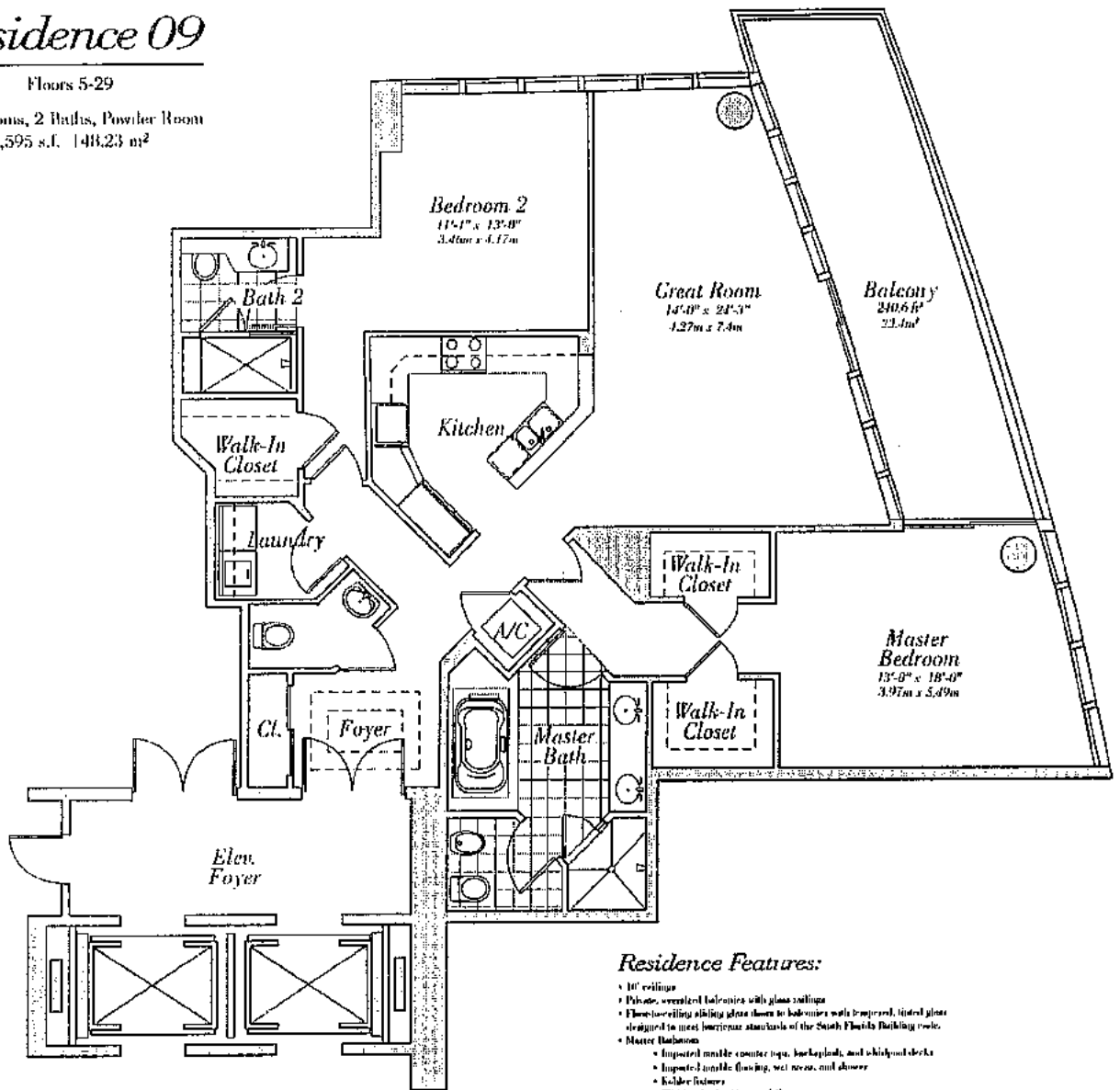
- 10' ceilings
- Private, oversized balconies with glass railings
- Floor-to-ceiling sliding glass doors to balconies with tempered, tinted glass designed to meet hurricane standards of the South Florida Building code.
- Master Bathroom
 - Imported marble counter tops, two vanities, and whirlpool deck.
 - Imported marble flooring, wet area, and shower
 - Kallie fixtures
 - Whirlpool tub with waterfall spout
 - European bathroom vanity cabinets with high-gloss finish
 - Seamless glass shower doors
 - Full length mirror
- Second Bathroom
 - Imported marble floor, wet area, and shower
 - Imported marble tops and backplish
 - European bathroom vanity cabinets with high-gloss finish
 - Glass enclosure for shower area
- Powder Room
 - Kallie fixtures
 - Porcelain sink
- Kitchen
 - Custom, imported European cabinets
 - Granite countertops and backplish
 - Under-counter lighting
 - Variable speed, recirculating range hood
 - Soft-close 30" built-in refrigerator/freezer
 - Marble built-in island cooking
 - Marble electric convection oven
 - Marble integrated dishwasher
 - Kitchenaid full-size microwave oven
 - Wine chiller in wet cabinet
 - Single-level layout with pull-out space
- Laundry
 - Shining Neptune front-load washer
 - Shining Neptune front-load electric dryer
- Provision for multiple telephone lines
- Provision for security systems
- Provision for cable TV
- Built-in television and entry doors
- Solid-core wood interior doors



CONTINUUM
ON SOUTH BEACH

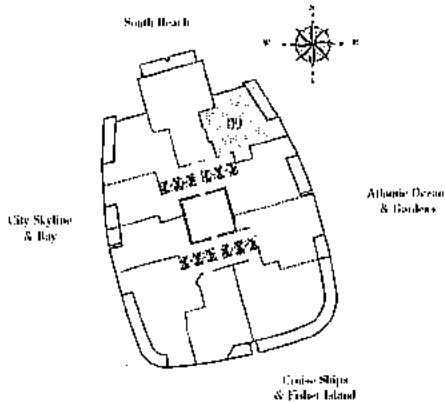
Residence 09

Floors 5-29
 2 Bedrooms, 2 Baths, Powder Room
 1,595 s.f. 148.23 m²



Residence Features:

- 10' ceilings
- Private, screened balconies with glass railings
- Floor-to-ceiling sliding glass doors to balconies with tempered, tinted glass designed to meet hurricane standards of the South Florida Building Code.
- Master Bathroom
 - Imported marble counter top, backsplash, and whirlpool deck
 - Imported marble flooring, wet areas, and shower
 - Kohler fixtures
 - Whirlpool tub with waterfall spout
 - European bathroom vanity cabinets with high-gloss finish
 - Seamless glass shower door
 - Full length mirror
- Second Bathroom
 - Imported marble floor, wet areas, and shower
 - Imported marble top and backsplash
 - European bathroom vanity cabinets with high-gloss finish
 - Glass enclosure for shower stalls
- Powder Room
 - Kohler fixtures
 - Pedestal sink
- Kitchen
 - Custom, imported European cabinetry
 - Granite countertops and backsplash
 - Under-cabinet lighting
 - Variable speed, recirculating range hood
 - Subzero 48" built-in refrigerator/freezer
 - Abbele touch-control cooktop
 - Abbele electric over-the-range oven
 - Abbele integrated dishwasher
 - KitchenAid built-in microwave oven
 - Wine chiller in cabinet enclosure
 - Single-lever faucet with pull-out spray
- Laundry
 - Mating Neptune front-load washer
 - Mating Neptune front-load electric dryer
- Pre-wiring for multiple telephone lines
- Pre-wiring for security system
- Pre-wiring for cable-TV
- 30A sub-leakage rated entry door
- Sub-leakage rated interior doors



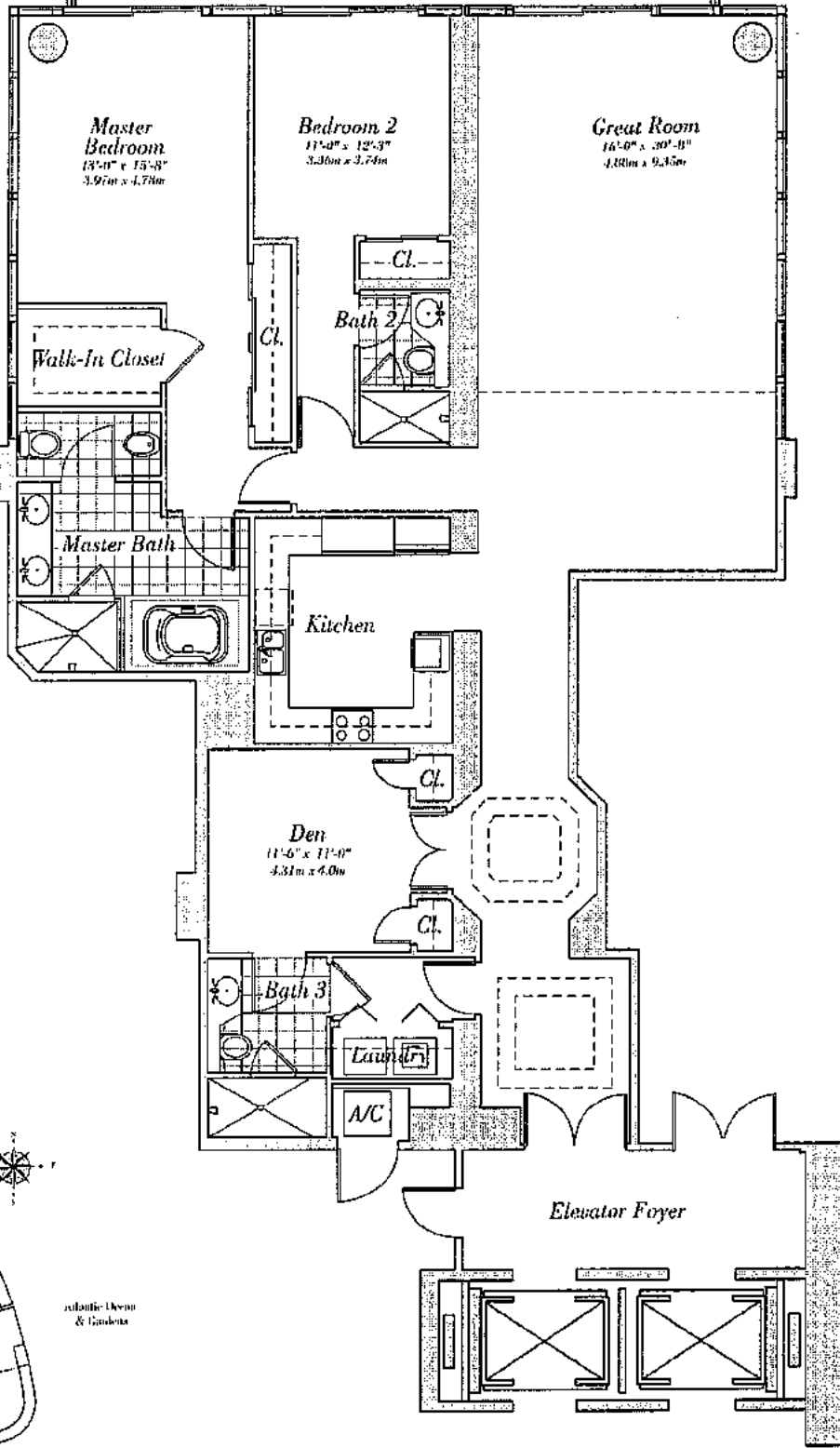
CONTINUUM
 ON SOUTH BEACH

Residence 10

Floors 5-29

2 Bedrooms & Den, 2 Baths, Powder Room
2,122 s.f. 197.2 m²

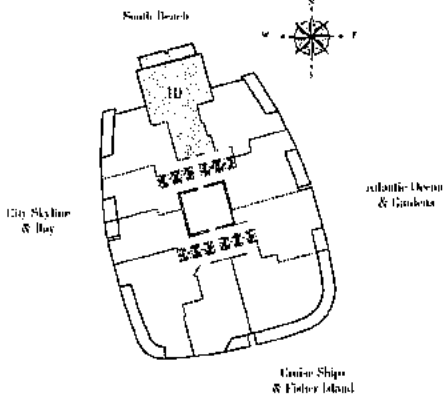
Balcony
283.6 ft²
26.5 m²



Residence Features:

- 11' ceilings
- Private, oversized balconies with glass railings
- Floor-to-ceiling sliding glass doors to balconies with tempered, tinted glass (designed to meet hurricane standards of the South Florida Building code)
- Master Bathroom
 - Imported marble vanity top, backplash, and whirlpool deck
 - Imported marble flooring, wet area, and shower
 - Koble fixtures
 - Whirlpool tub with waterfall spout
 - European lock-down vanity cabinets with high-gloss finish
 - Seamless glass shower doors
 - Full length mirror
- Second Bathroom
 - Imported marble floor, wet area, and shower
 - Imported marble top and backplash
 - European bathroom vanity cabinets with high-gloss finish
 - Glass enclosures for shower stalls
- Powder Room
 - Koble fixtures
 - Pedestal sink
- Kitchen
 - Custom, imported European cabinets
 - Granite countertops and backplash
 - Full-circuit lighting
 - Variable speed, reciprocating range hood
 - Subzero 80" built-in refrigerator/freezer
 - Miele mechanical cooking
 - Miele storage compartment oven
 - Miele integrated dishwasher
 - Kitchen Aid full-size microwave oven
 - Wipe-zaffer for select appliances
 - Single-level layout with pull-out quartz
- Laundry
 - Maysun Neptune front-load washer
 - Maysun Neptune front load electric dryer
- Pre-wiring for multiple telephone lines
- Pre-wiring for security systems
- Pre-wiring for cable TV
- Built-in lockers and entry shoes
- Sub-zero wood interior doors

CONTINUUM
ON SOUTH BEACH

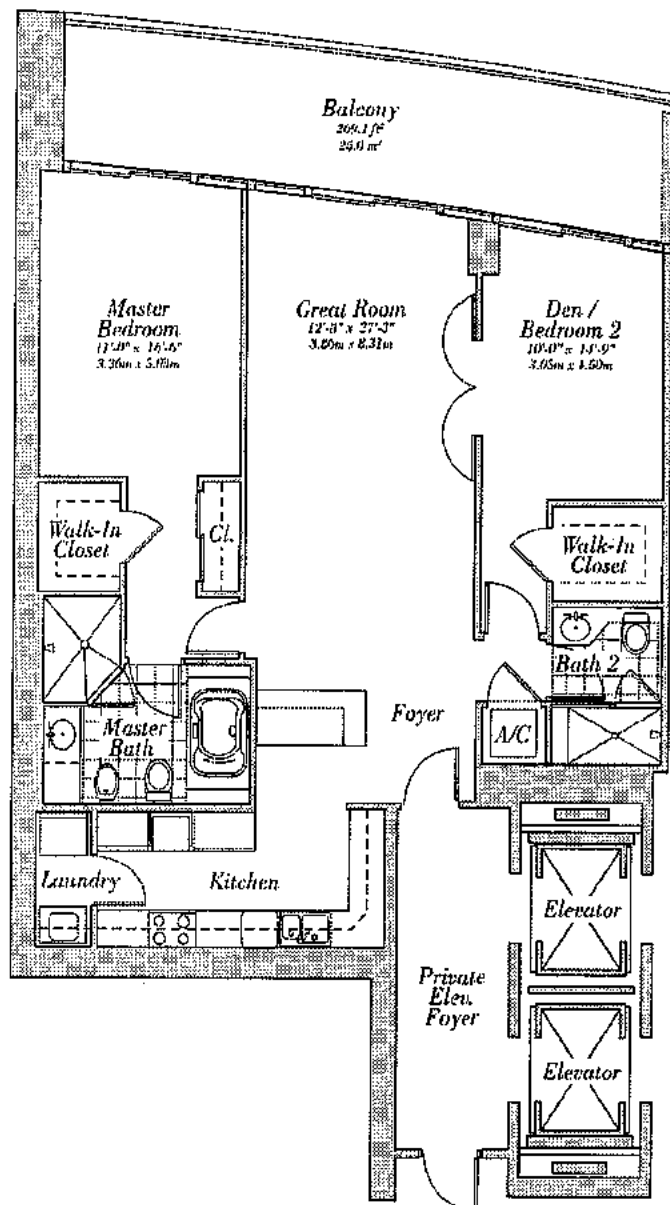


Residence 11

Floor 30

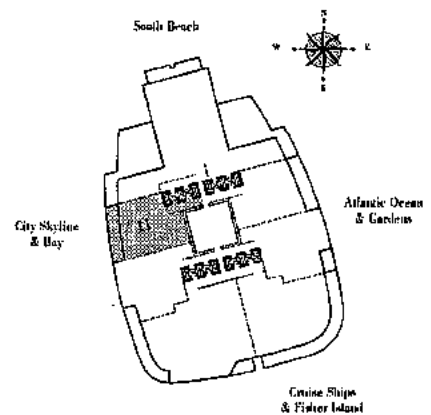
1 Bedroom, Den, 2 Bath

1,438 s.f. 133.6 m²



Residence Features:

- 10' ceilings
- Private, oversized balconies with glass railings
- Floor-to-ceiling sliding glass doors in balconies with tempered, tinted glass designed to meet hurricane standards of the South Florida Building code.
- Master Bedroom
 - Imported marble counter tops, backsplash, and whirlpool decks
 - Imported marble flooring in wet areas and shower
 - Kohler fixtures
 - White-painted tub with waterfall spout
 - European fixtures on vanity cabinets with high-gloss finish
 - Seamless glass shower doors
 - Full-length mirror
- Second Bathroom
 - Imported marble flooring in wet areas and shower
 - Imported marble top and whirlpool
 - European fixtures on vanity cabinets with high-gloss finish
 - Glass enclosure for shower stall
- Powder Room
 - Kohler fixtures
 - Pedestal sink
- Kitchen
 - Custom, imported European cabinetry
 - Granite countertops and glass back splash
 - Under-counter lighting
 - Variable speed, recirculating range hood
 - Stainless-steel built-in refrigerator/drawer
 - Marble touch-control cooking
 - Marble electric convection oven
 - Marble integrated dishwasher
 - Kit from AIA full-size island-style oven
 - Glass-tilled in-slab countertop
 - Single-level layout with pull-out apron
- Laundry
 - Mating Neptune front-load washer
 - Mating Neptune front-load electric dryer
- Provision for multiple telephone lines
- Provision for security system
- Provision for cable TV
- Soft solid-core wood entry doors
- Solid-core wood interior doors

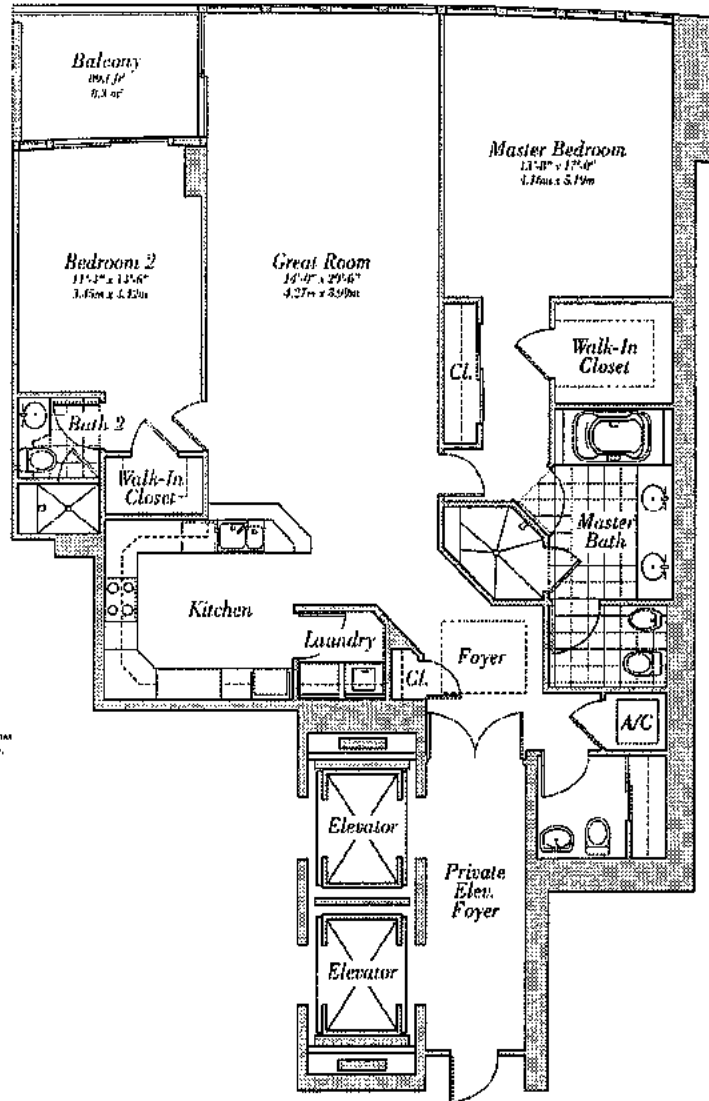


CONTINUUM
ON SOUTH BEACH

Residence 12

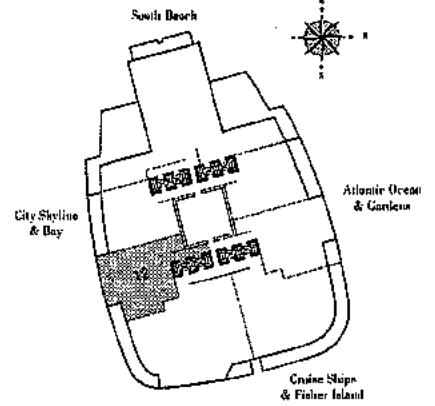
Floors 30-39

2 Bedroom, 2 Bath, Powder Room
1,791 s.f. 166.4 m²



Residence Features:

- 10' ceilings
- Private, oversized balconies with glass railings
- Floor-to-ceiling sliding glass doors w/low-sill with tempered, tinted glass designed to meet hurricane standards of the South Florida Building code.
- Master Bathroom
 - Imported marble countertops, backsplash, and tiled pool decks
 - Imported marble flooring in wet areas and shower
 - Kohler fixtures
 - Whirlpool tub with waterfall spout
 - European bathroom vanity cabinets with high-gloss finish
 - Seamless glass shower doors
 - Full length mirror
- Second Bathroom
 - Imported marble flooring in wet areas and shower
 - Imported marble top and backsplash
 - European bathroom vanity cabinets with high-gloss finish
 - Glass enclosure for shower stalls
- Powder Room
 - Kohler fixtures
 - Porcelain sink
- Kitchen
 - Custom, imported European cabinetry
 - Granite countertops and glass backsplashes
 - Undercabinet lighting
 - Variable speed, convection range hood
 - Subzero 48" built-in refrigerator-freezer
 - Miele touch-control cooktop
 - Miele electric convection oven
 - Miele integrated dishwasher
 - KitchenAid full-size microwave oven
 - Wine chiller in select residences
 - Single-bay foyers with pull-out spray
- Laundry
 - Mating Neptune front-load washer
 - Mating Neptune front-load electric dryer
- Provision for multiple telephone lines
- Provision for security systems
- Provision for cable TV
- Rich solid-wood entry doors
- Solid-wood wood interior doors



CONTINUUM
ON SOUTH BEACH

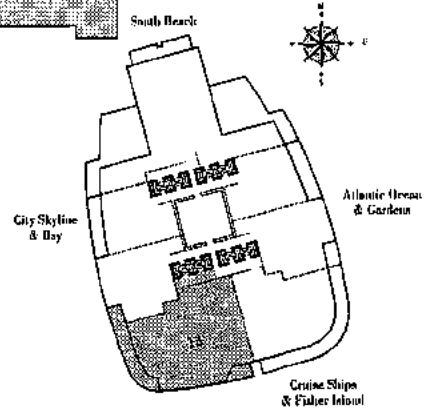
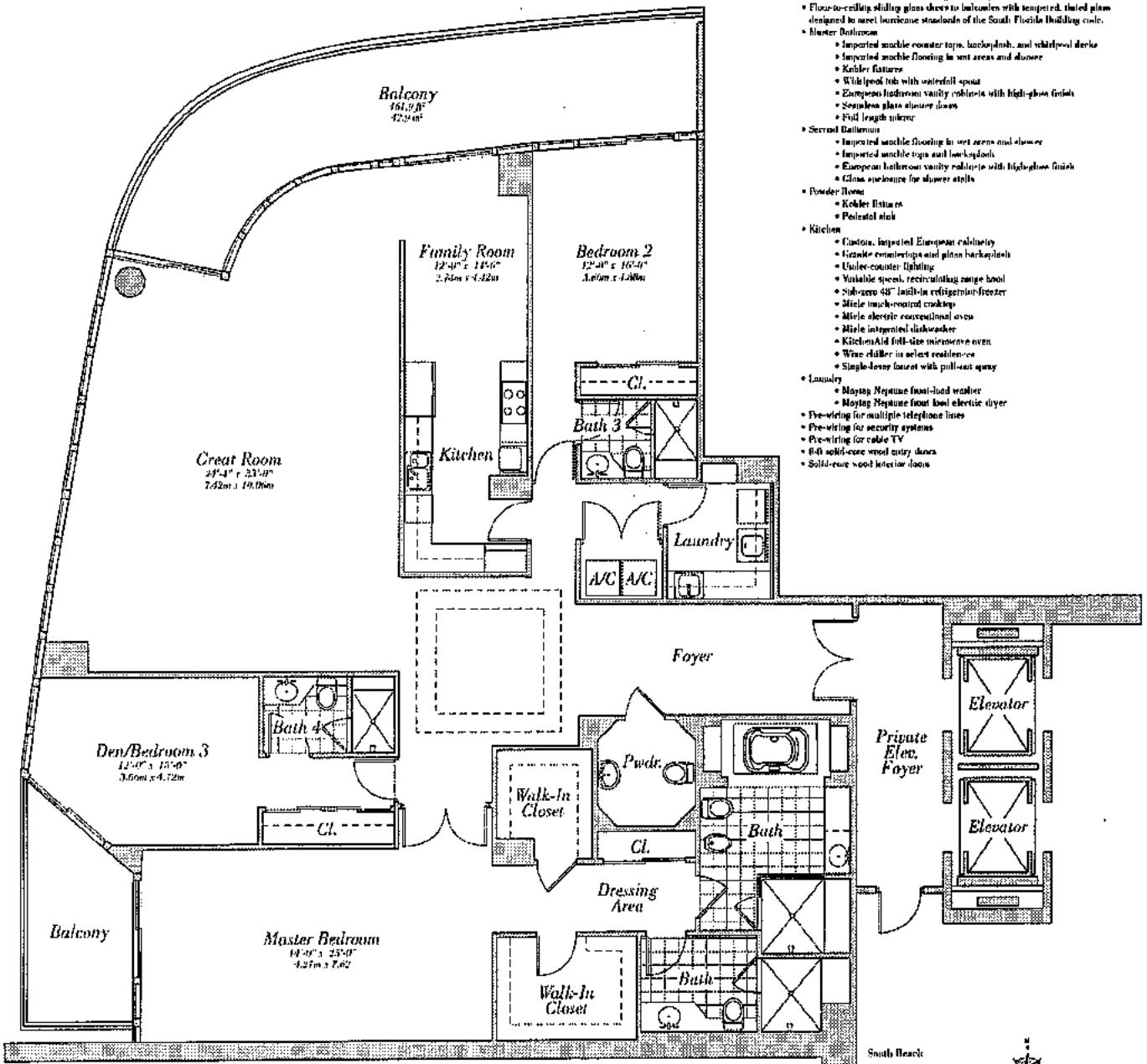
Residence 13

Floors 30-35

3 Bedroom, 4 Bath, Powder Room
3,335 s.f. 309.9 m²

Residence Features:

- 10' ceilings
- Private, oversized balconies with glass railings
- Floor-to-ceiling sliding glass doors to balconies with tempered, tinted glass designed to meet hurricane standards of the South Florida Building Code.
- Master Bedroom
 - Imported marble counter tops, backsplash, and waterfall sinks
 - Imported marble flooring in wet areas and shower
 - Kohler fixtures
 - Walk-in tub with waterfall spout
 - European bathroom vanity cabinets with high-gloss finish
 - Seamless glass shower doors
 - Full length mirror
- Second Bathroom
 - Imported marble flooring in wet areas and shower
 - Imported marble tops and backsplash
 - European bathroom vanity cabinets with high-gloss finish
 - Glass enclosure for shower stalls
- Powder Room
 - Kohler fixtures
 - Porcelain tile
- Kitchen
 - Custom, imported European cabinetry
 - Granite countertops and glass backsplash
 - Under-counter lighting
 - Variable speed, recirculating range hood
 - Sub-zero 48" built-in refrigerator/freezer
 - Miele touch-control crockpot
 - Miele electric convection oven
 - Miele integrated dishwasher
 - KitchenAid full-size microwave oven
 - Wine chiller in select residences
 - Single-lever faucet with pull-out spray
- Laundry
 - Maytag Neptune front-load washer
 - Maytag Neptune front load electric dryer
- Pre-wiring for multiple telephone lines
- Pre-wiring for security systems
- Pre-wiring for cable TV
- 6-8 solid-core wood entry doors
- Solid-core wood interior doors

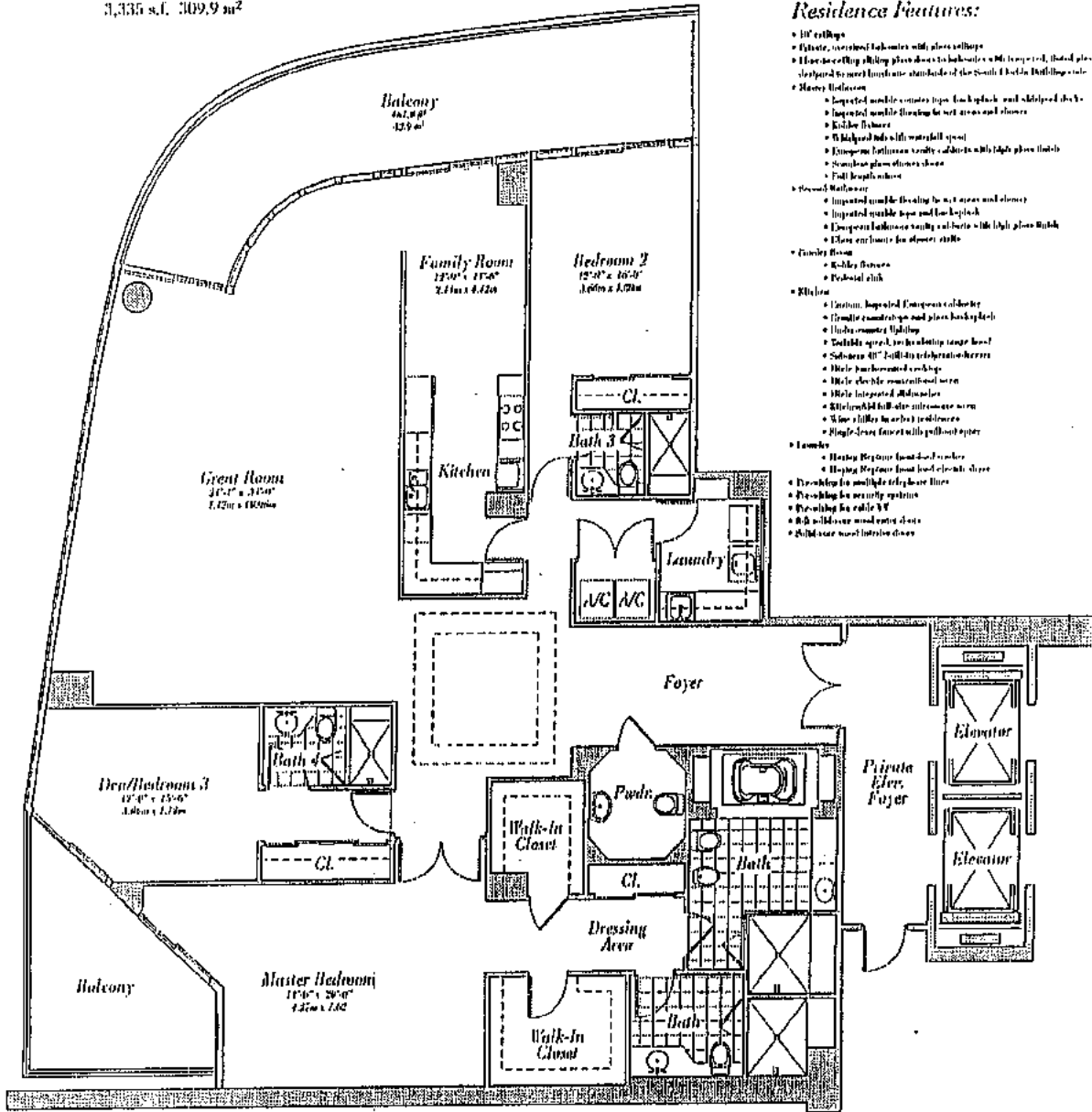


CONTINUUM
ON SOUTH BEACH

Residence 13a

Floors 36-39

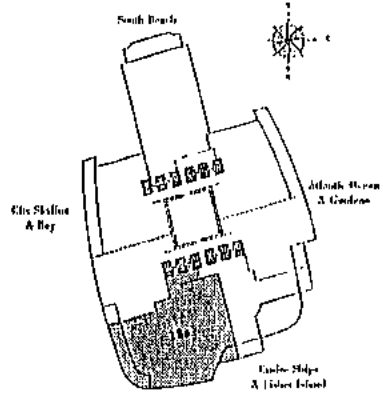
3 Bedroom, 4 Bath, Powder Room
3,335 s.f. 309.9 m²



Residence Features:

- 10' ceilings
- Granite, travertine balconies with glass railings
- 11 base cabinet sliding glass doors to balconies with tempered, tinted glass designed to meet hurricane standards of the South Florida Building Code
- Master Bedroom
 - Imported marble vanity top, back splash and tiled floor
 - Imported marble flooring for wet areas and shower
 - Kicker fixture
 - 5' high panel with waterfall spout
 - European bathroom vanity cabinet with high glass finish
 - Stainless glass shower doors
 - Full length mirror
- Second Bathroom
 - Imported marble flooring for wet areas and shower
 - Imported marble top and back splash
 - European bathroom vanity cabinet with high glass finish
 - Glass enclosure for shower area
- Family Room
 - Kicker fixture
 - Pedestal sink
- Kitchen
 - Custom, imported European cabinet
 - Granite countertop and glass backsplash
 - Under cabinet lighting
 - Double speed, 1/2 hp ceiling range hood
 - Subzero 40" built-in refrigerator-freezer
 - White porcelain soaking tub
 - White electric over-the-range oven
 - White imported dishwasher
 - White imported built-in microwave oven
 - Wine filler for cabinet pediments
 - Single door front entry pull-out step
- Laundry
 - Heavy duty front load clothes dryer
 - Heavy duty front load electric stove
 - Pre-wash for multiple dry-care items
 - Pre-wash for heavily soiled items
 - Pre-wash for heavily soiled items
 - Pre-wash for heavily soiled items
 - Pre-wash for heavily soiled items
 - Pre-wash for heavily soiled items
 - Pre-wash for heavily soiled items

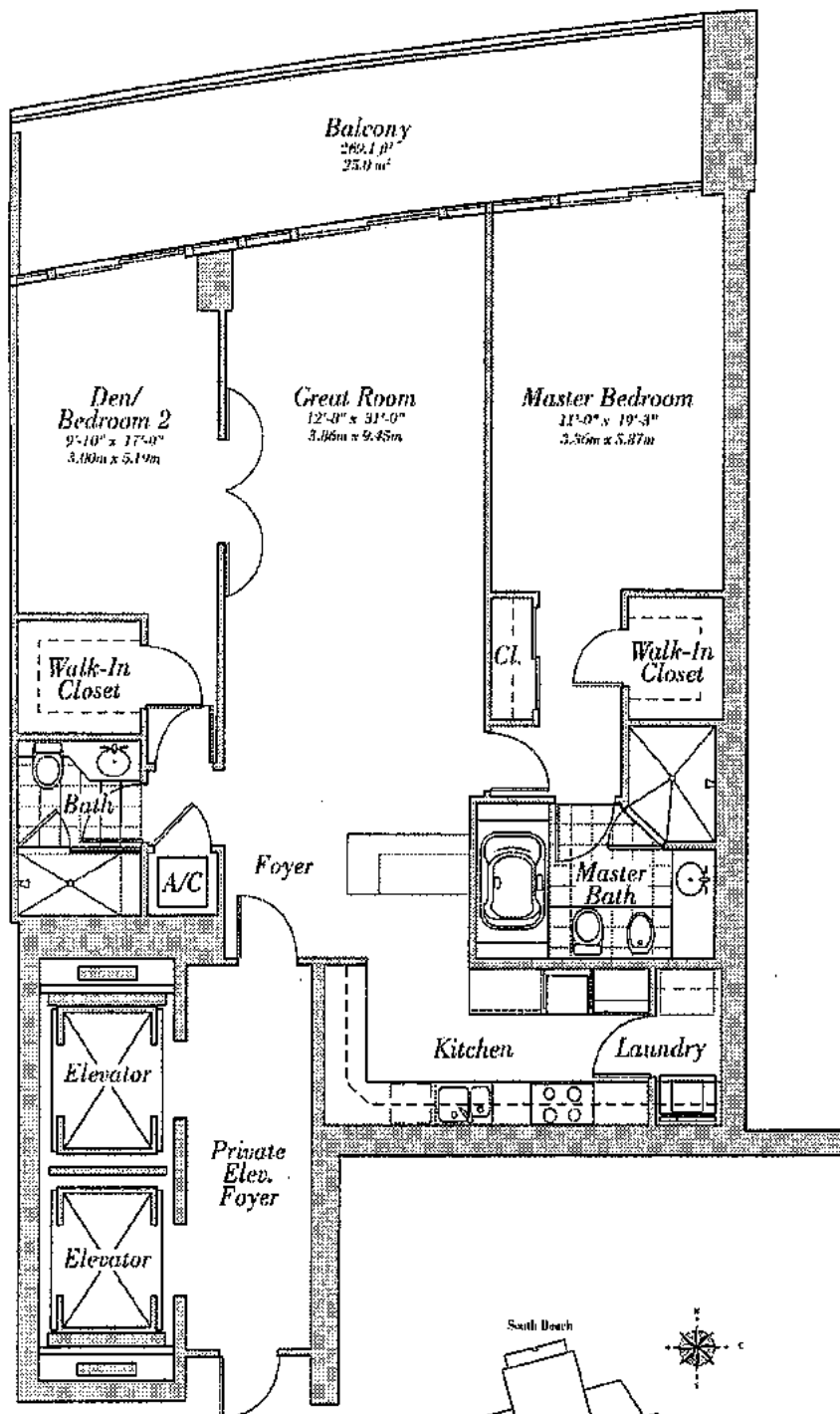
CONTINUUM
ON SOUTH BEACH II



Residence 14

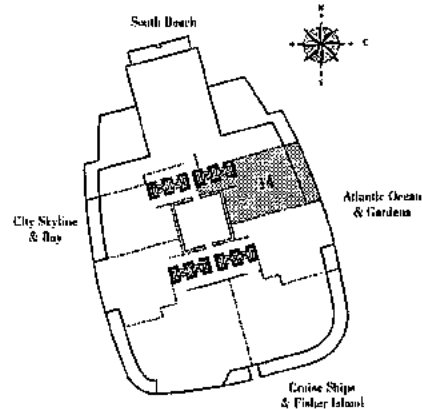
Floor 30

1 Bedroom, Den, 2 Bath
1,533 s.f. 142.5 m²



Residence Features:

- 10' ceilings
- Durable, oversized balconies with glass railings
- Floor-to-ceiling sliding glass doors to balconies with tempered, tinted glass designed to meet hurricane standards of the South Florida Building code.
- Master Bathroom
 - Imported marble counter tops, lockup/dish, and whirlpool decks
 - Imported marble flooring in wet areas and shower
 - Kohler fixtures
 - Whirlpool tub with waterfall spout
 - European bathroom vanity cabinets with high-gloss finish
 - Stainless glass shower doors
 - Full length mirror
- Second Bathroom
 - Imported marble flooring in wet areas and shower
 - Imported marble tops and lockup/dish
 - European bathroom vanity cabinets with high-gloss finish
 - Glass enclosure for shower stalls
- Powder Room
 - Kohler fixtures
 - Porcelain sink
- Kitchen
 - Custom, imported European cabinetry
 - Granite counter tops and glass backsplash
 - Under-cabinet lighting
 - Variable speed, recirculating range hood
 - Subzero 40" built-in refrigerator-freezer
 - Richle touch-sensitive cooktop
 - Richle electric range/hood/oven
 - Richle integrated dishwasher
 - KitchenAid full-size microwave oven
 - Wine chiller to select residences
 - Single-lever faucet with pull-out spray
- Laundry
 - Bluing Nylmate front-load washer
 - Bluing Nylmate front load electric dryer
- Pre-wiring for multiple telephone lines
- Pre-wiring for security system
- Pre-wiring for cable TV
- Rich solid-core wood entry doors
- Subzero wood interior doors



CONTINUUM
ON SOUTH BEACH

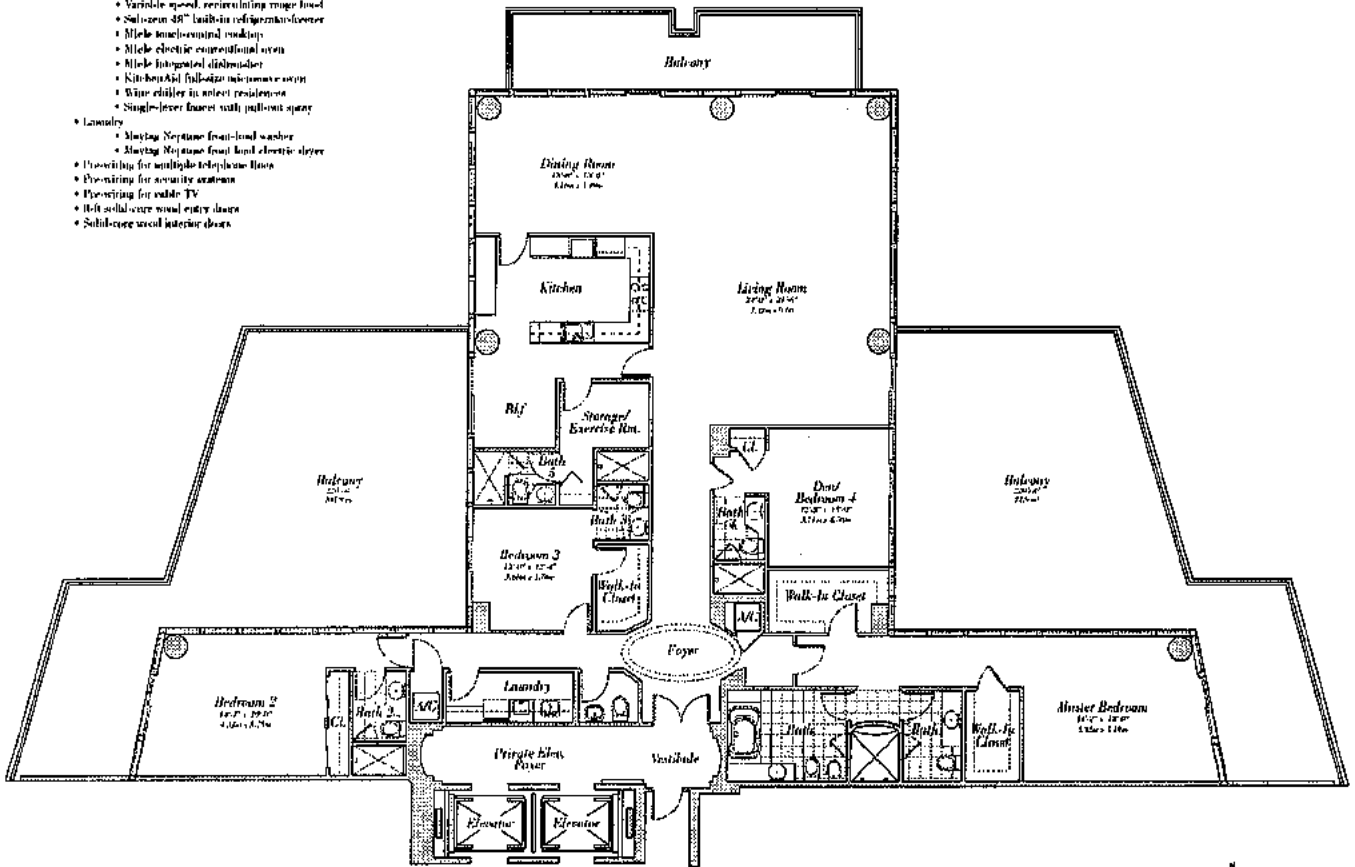
Residence 15

Floor 30

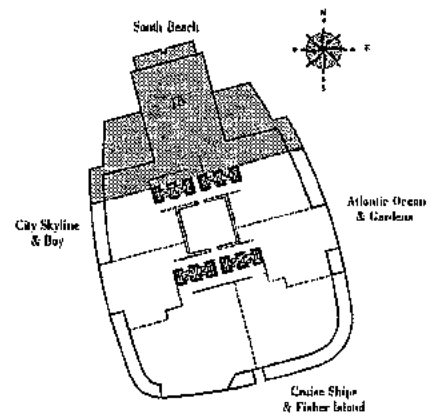
4 Bedroom, 5 Bath, Powder Room
4,004 s.f. 372.11 m²

Residence Features:

- 16' ceilings
- Double, oversized balconies with glass railings
- Floor-to-ceiling sliding glass doors in balconies with tempered, tinted glass designed to meet hurricane standards of the South Florida Building code.
- Master Bathroom
 - Imported marble counter tops, backsplash, and whirlpool deck
 - Imported marble flooring in wet areas and shower
 - Kohler fixtures
 - Whirlpool tub with waterfall spout
 - European bathroom vanity cabinets with high-gloss finish
 - Frameless glass shower doors
 - Full length mirror
- Second Bathroom
 - Imported marble flooring in wet areas and shower
 - Imported marble tops and backsplash
 - European bathroom vanity cabinets with high-gloss finish
 - Glass enclosure for shower stalls
- Powder Room
 - Kohler fixtures
 - Pedestal sink
- Kitchen
 - Custom, imported European cabinetry
 - Granite countertop and glass backsplash
 - Under-counter lighting
 - Variable speed, recirculating range hood
 - Subzero 48" built-in refrigerator/freezer
 - Miele mechanical cooktop
 - Miele electric convection oven
 - Miele integrated dishwasher
 - KitchenAid built-in microwave oven
 - Wine chiller in select residences
 - Single-lever faucet with pull-out spray
- Laundry
 - Mating Neptune front-load washer
 - Mating Neptune front-load electric dryer
- Provision for multiple telephone lines
- Pre-wiring for security system
- Pre-wiring for cable TV
- Bell solid-core wood entry doors
- Solid-core wood interior doors



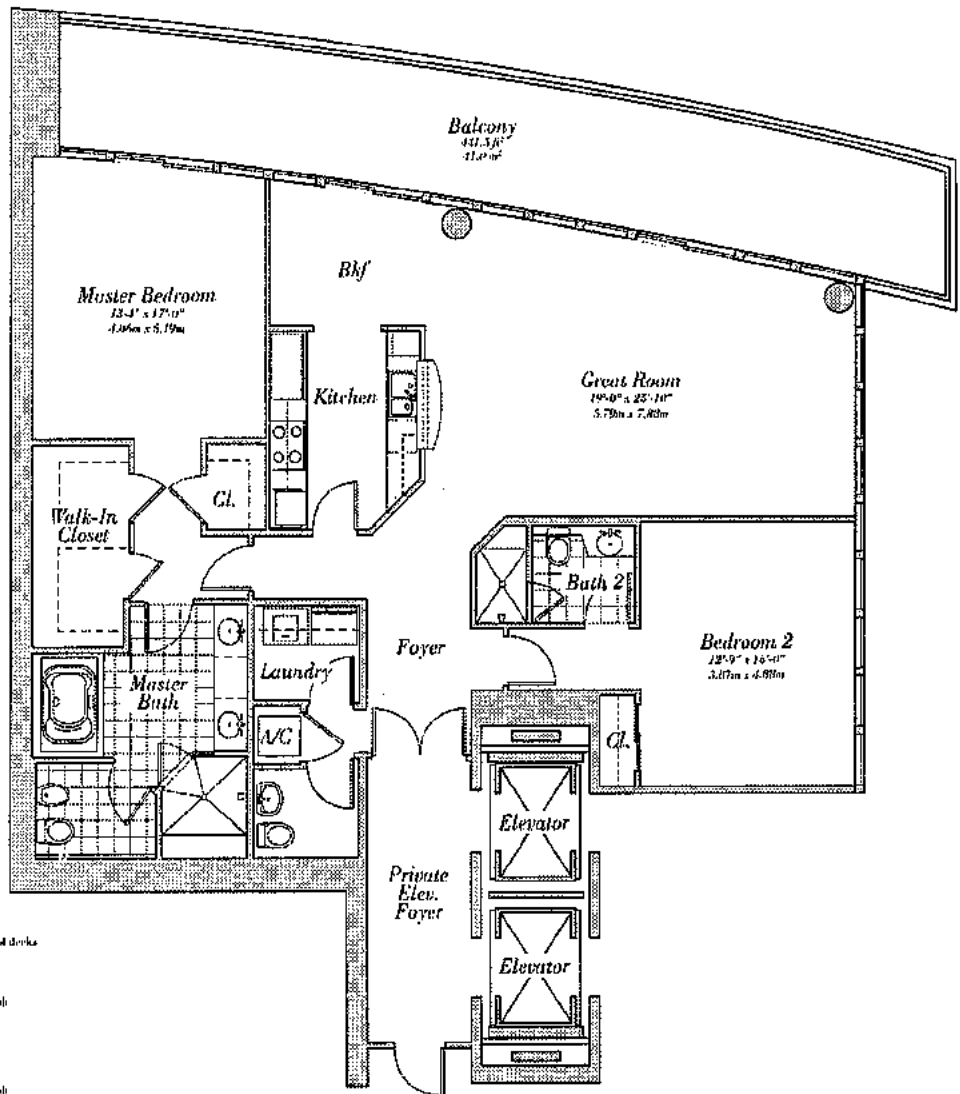
CONTINUUM
ON SOUTH BEACH



Residence 16

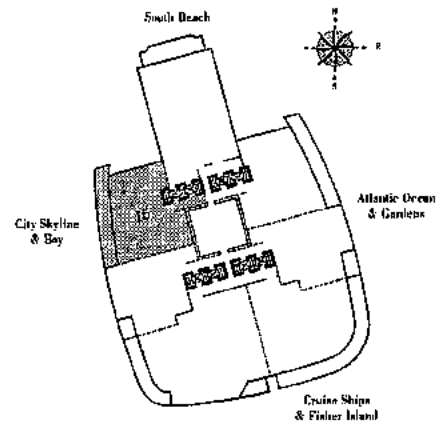
Floors 31-39

2 Bedroom, 2 Bath, Powder Room
1,940 s.f. 180.3 m²



Residence Features:

- 10' ceilings
- Private, oversized balconies with glass railings
- Floor-to-ceiling sliding glass doors to balconies with tempered, tinted glass designed to meet hurricane standards of the South Florida Building Code.
- Master Bathroom
 - Imported marble counter tops, backsplash, and whirlpool decks
 - Imported marble flooring in wet areas and shower
 - Kohler fixtures
 - Whirlpool tub with waterfall spout
 - European bathroom vanity cabinets with high-gloss finish
 - Seamless glass shower doors
 - Full length mirror
- Second Bathroom
 - Imported marble flooring in wet areas and shower
 - Imported marble tops and backsplash
 - European bathroom vanity cabinets with high-gloss finish
 - Glass enclosure for shower stalls
- Powder Room
 - Kohler fixtures
 - Tiled stall
- Kitchen
 - Custom, imported European cabinetry
 - Granite countertops and glass backsplash
 - Under-counter lighting
 - Variable speed, revolving range hood
 - Subzero 40" built-in refrigerator-freezer
 - Aisle french-door cooking
 - Aisle electric conventional oven
 - Aisle integrated dishwasher
 - KitchenAid full-size appliance garage
 - Wine chiller in cabinet recesses
 - Single-door faucet with pull-out spray
- Laundry
 - Maytag Neptune front-load washer
 - Maytag Neptune front load electric dryer
- Pre-wiring for multiple telephone lines
- Pre-wiring for security systems
- Pre-wiring for cable TV
- Hard wood-core wood entry doors
- Solid-core wood interior doors

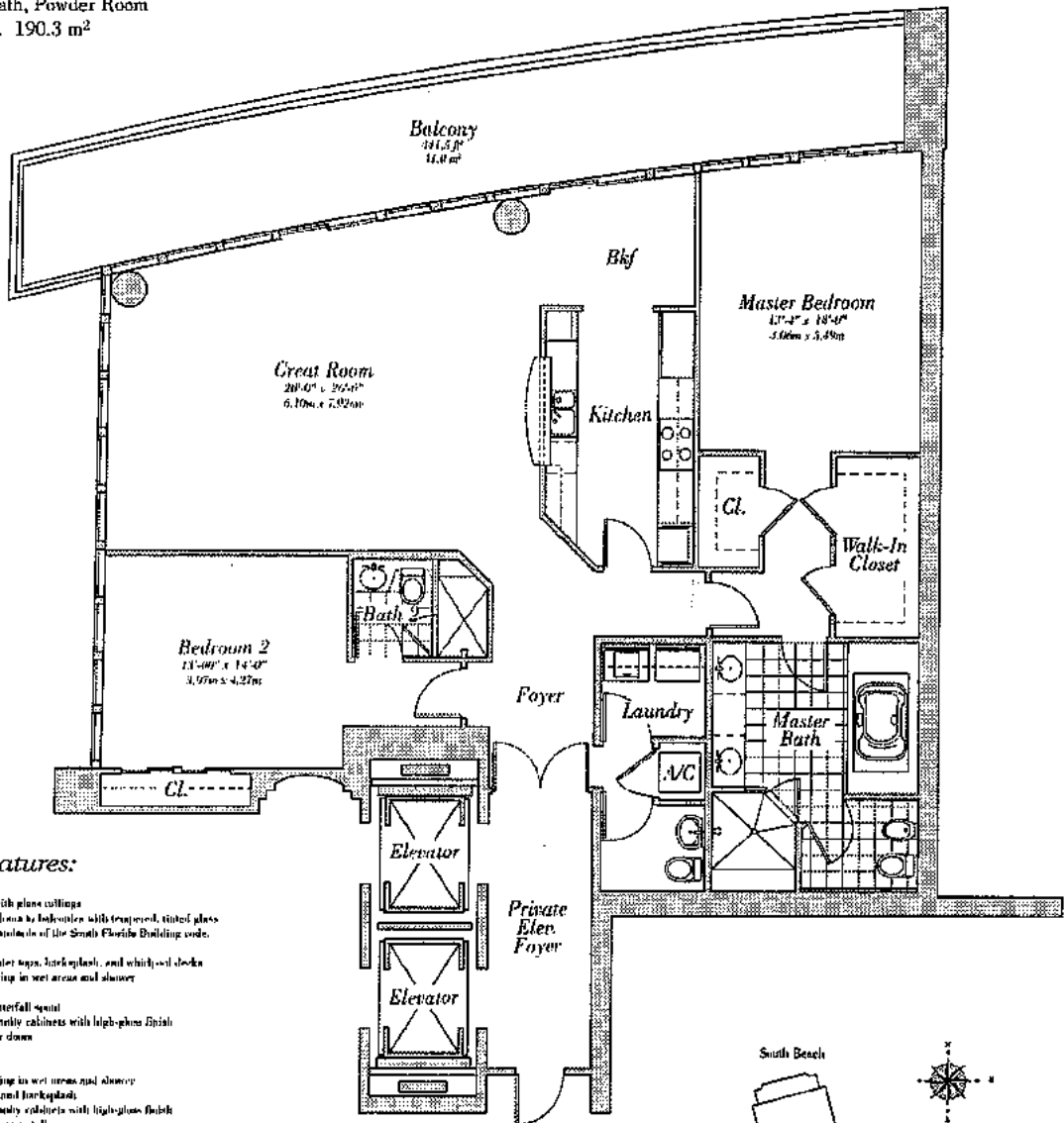


CONTINUUM
ON SOUTH BEACH

Residence 17

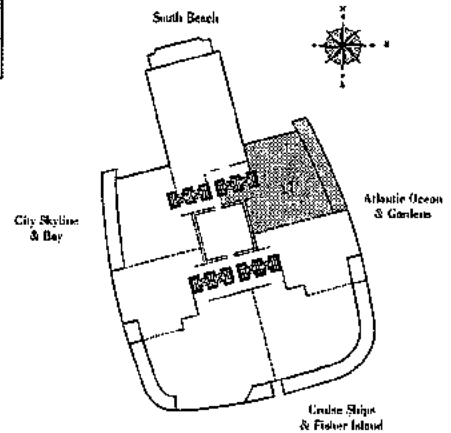
Floors 31-39

2 Bedroom, 2 Bath, Powder Room
2,048 s.f. 190.3 m²



Residence Features:

- 10' ceilings
- Private, recessed entrance with glass ceiling
- Floor-to-ceiling sliding glass doors to balcony with tempered, tinted glass designed to meet hurricane standards of the South Florida Building code.
- Master Bathrooms
 - Imported marble vanity tops, backplash, and whirlpool decks
 - Imported marble flooring in wet areas and shower
 - Kohler fixtures
 - Whirlpool tub with waterfall spout
 - European bathroom vanity cabinets with high-gloss finish
 - Seamless glass shower doors
 - Full length mirror
- Servant Bathroom
 - Imported marble flooring in wet areas and shower
 - Imported marble tops and backplash
 - European bathroom vanity cabinets with high-gloss finish
 - Glass enclosure for shower stalls
- Powder Room
 - Kohler fixtures
 - Pedestal sink
- Kitchen
 - Lustrous, imported European cabinetry
 - Granite countertops and glass backplash
 - Under-counter lighting
 - Variable speed, recirculating range hood
 - Subzero 40" built-in refrigerator
 - Miele built-in coffee maker
 - Miele electric convection oven
 - Miele integrated dishwasher
 - KitchenAid full-size microwave oven
 - Wine chiller to select residences
 - Single-lever faucet with pull-out spray
- Laundry
 - Maytag Neptune front-load washer
 - Maytag Neptune front load electric dryer
- Pre-wiring for multiple telephone lines
- Pre-wiring for security systems
- Pre-wiring for cable TV
- 6-ft solid-core wood entry door
- Solid-core wood interior doors

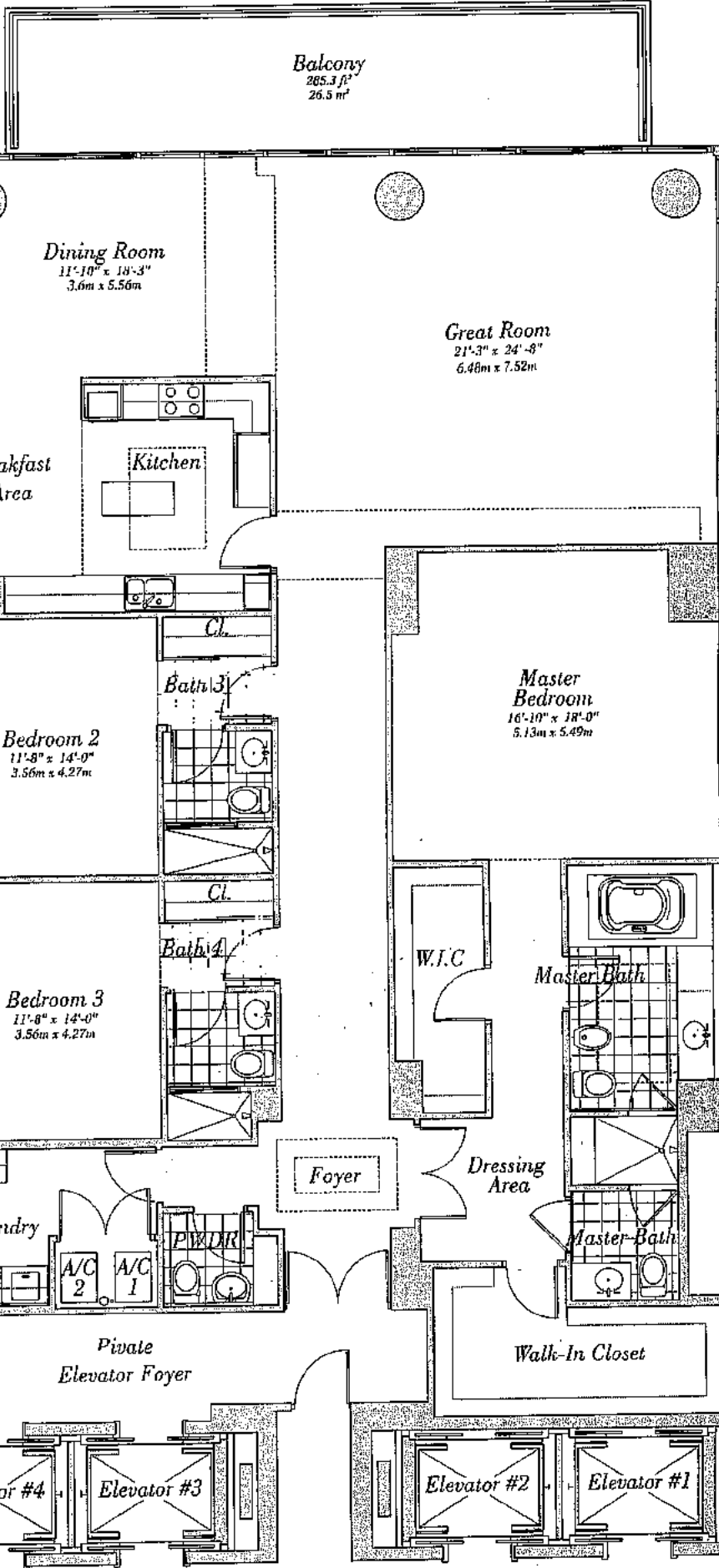


CONTINUUM
ON SOUTH BEACH

Residence 18

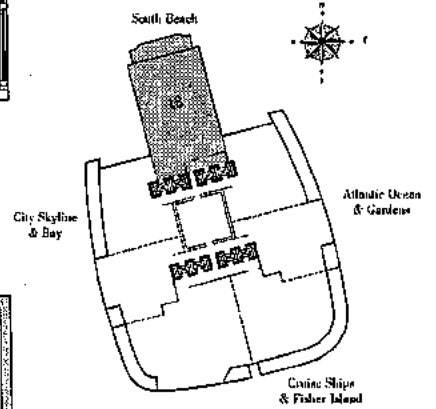
Floors 31-39

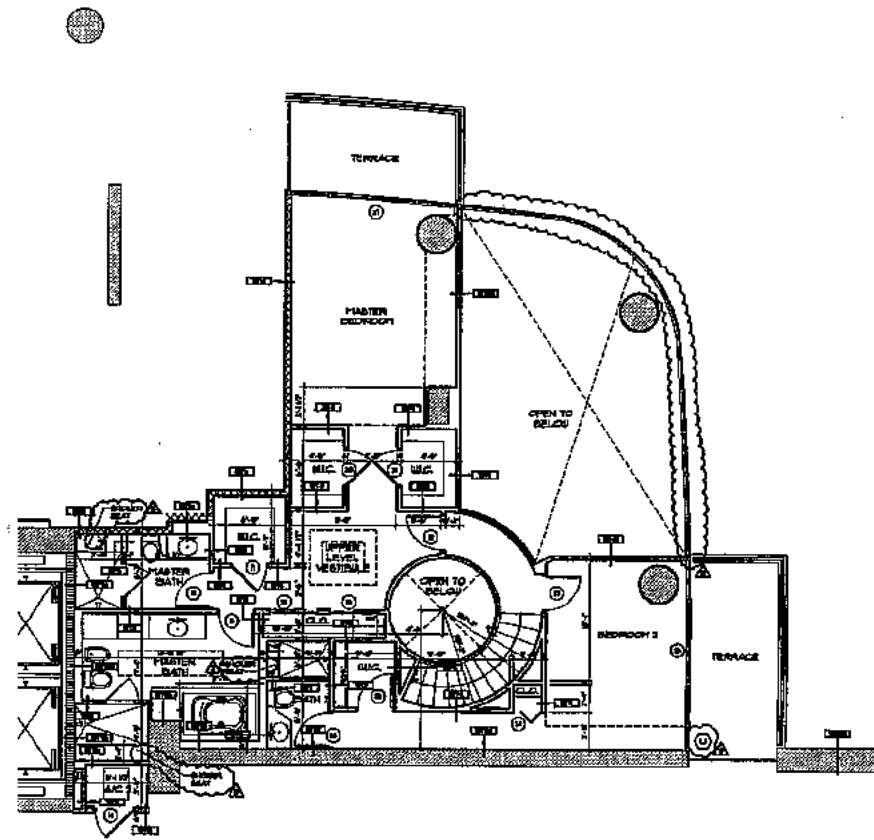
3 Bedroom, 4 Bath, Powder Room
2,954 s.f. 274.53 m²



Residence Features:

- 10' ceilings
- Private, covered balconies with glass railings
- Floor-to-ceiling sliding glass doors to balconies with tempered, tinted glass designed to meet hurricane standards of the South Florida Building code.
- **Master Bathroom**
 - Imported marble counter tops, backsplash, and whirlpool decks
 - Imported marble flooring in wet areas and shower
 - Kohler fixtures
 - Whirlpool tub with waterfall spout
 - European porcelain vanity cabinets with high-gloss finish
 - Seamless glass shower doors
 - Full length mirror
- **Second Bathroom**
 - Imported marble flooring in wet areas and shower
 - Imported marble tops and backspalls
 - European porcelain vanity cabinets with high-gloss finish
 - Glass enclosure for shower stalls
- **Powder Room**
 - Kohler fixtures
 - Porcelain sink
- **Kitchen**
 - Custom, imported European cabinetry
 - Granite countertops and glass backspalls
 - Under-counter lighting
 - Variable speed, recirculating range hood
 - Full-size 60" built-in refrigerator-freezer
 - Electric touch-control cooktop
 - Electric electric conventional oven
 - Electric integrated dishwasher
 - KitchenAid full-size microwave oven
 - Wine chiller in select residences
 - Single-lever faucet with pull-out spray
- **Laundry**
 - Maytag Neptune front-load washer
 - Maytag Neptune front-load electric dryer
- Pre-wiring for multiple telephone lines
- Pre-wiring for security systems
- Pre-wiring for cable TV
- 6-ft solid-core wood entry doors
- Solid-core wood interior doors

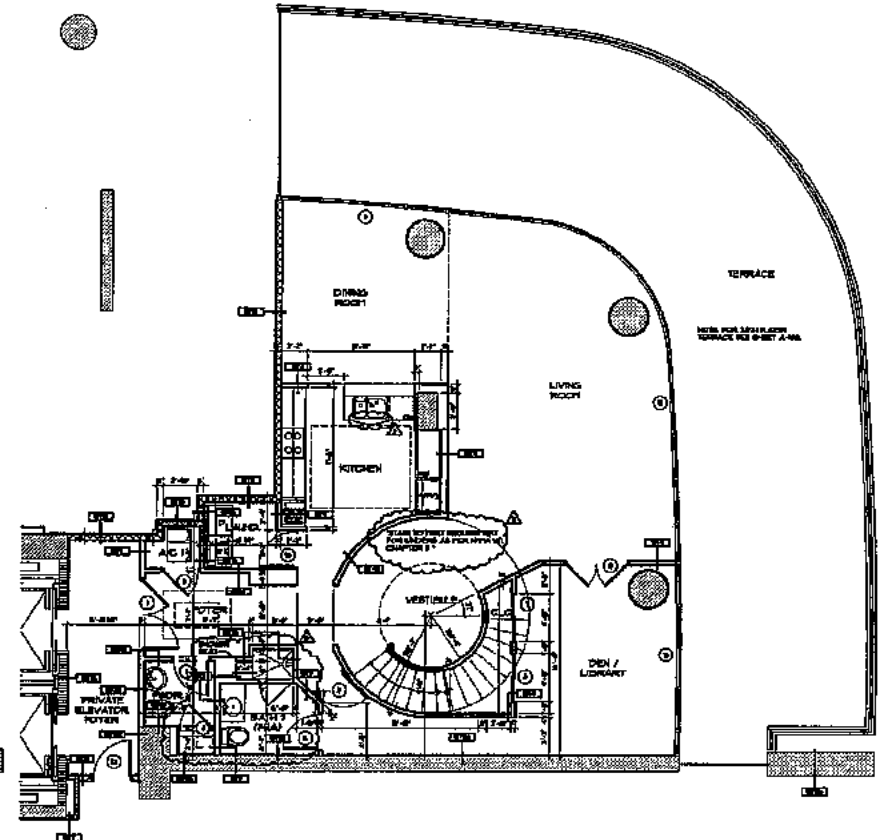




TYPICAL UNIT-19 UPPER LEVEL FLOOR PLAN
(37TH AND 38TH FLOORS - SOUTH TOWER)

SCALE: 1/8" = 1'-0"

COORDINATE SKETCHES OF
EXISTING WALL TYPES
WITH ADJACENT UNITS



TYPICAL UNIT-19 LOWER LEVEL FLOOR PLAN
(36TH FLOOR - SOUTH TOWER) (38TH FLOOR SIMILAR)

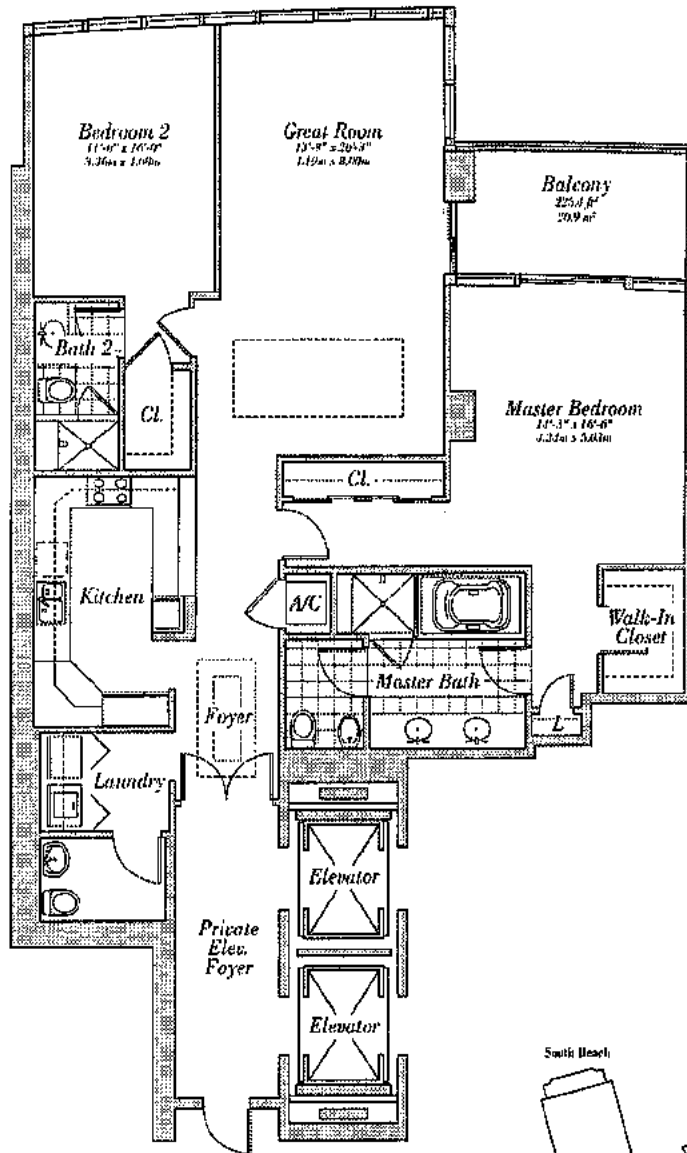
SCALE: 1/8" = 1'-0"

COORDINATE SKETCHES OF
EXISTING WALL TYPES
WITH ADJACENT UNITS

Residence 20

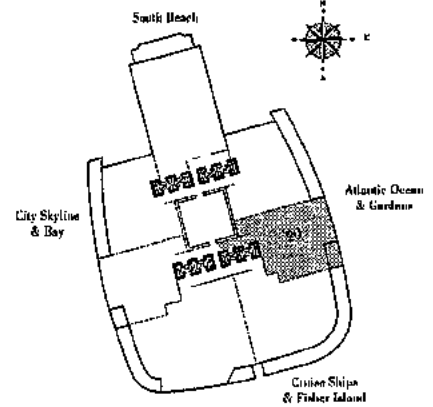
Floors 36-39

2 Bedroom, 2 Bath, Powder Room
1,793 s.f. 166.6 m²



Residence Features:

- 10' ceilings
- Private, oversized balconies with glass railings
- Floor-to-ceiling sliding glass doors to balconies with tempered, tinted glass designed to meet hurricane standards of the South Florida Building Code.
- Master Bathroom
 - Imported marble counter tops, backsplash, and whirlpool decks
 - Imported marble flooring in wet areas and shower
 - Kohler fixtures
 - Whirlpool tub with waterfall spout
 - European bathroom vanity cabinets with high-gloss finish
 - Stainless glass shower doors
 - Full length mirror
- Second Bathroom
 - Imported marble flooring in wet areas and shower
 - Imported marble tops and backsplash
 - European bathroom vanity cabinets with high-gloss finish
 - Glass enclosure for shower stalls
- Powder Room
 - Kohler fixtures
 - Pedestal sink
- Kitchen
 - Custom, imported European cabinetry
 - Granite countertops and glass backsplash
 - Undercounter lighting
 - Variable speed, ventilating range hood
 - Full-size 48" built-in refrigerator
 - Wide-handle stainless cooktop
 - High-velocity suspension oven
 - High integrated dishwasher
 - KitchenAid full-size microwave oven
 - Wine chiller in select residences
 - Single-lever faucet with pull-out spray
- Laundry
 - Maytag Neptune front-load washer
 - Maytag Neptune front-load electric dryer
- Pre-wiring for multiple telephone lines
- Pre-wiring for security systems
- Pre-wiring for cable TV
- 8-ft solid-core wood entry doors
- Solid-core wood interior doors

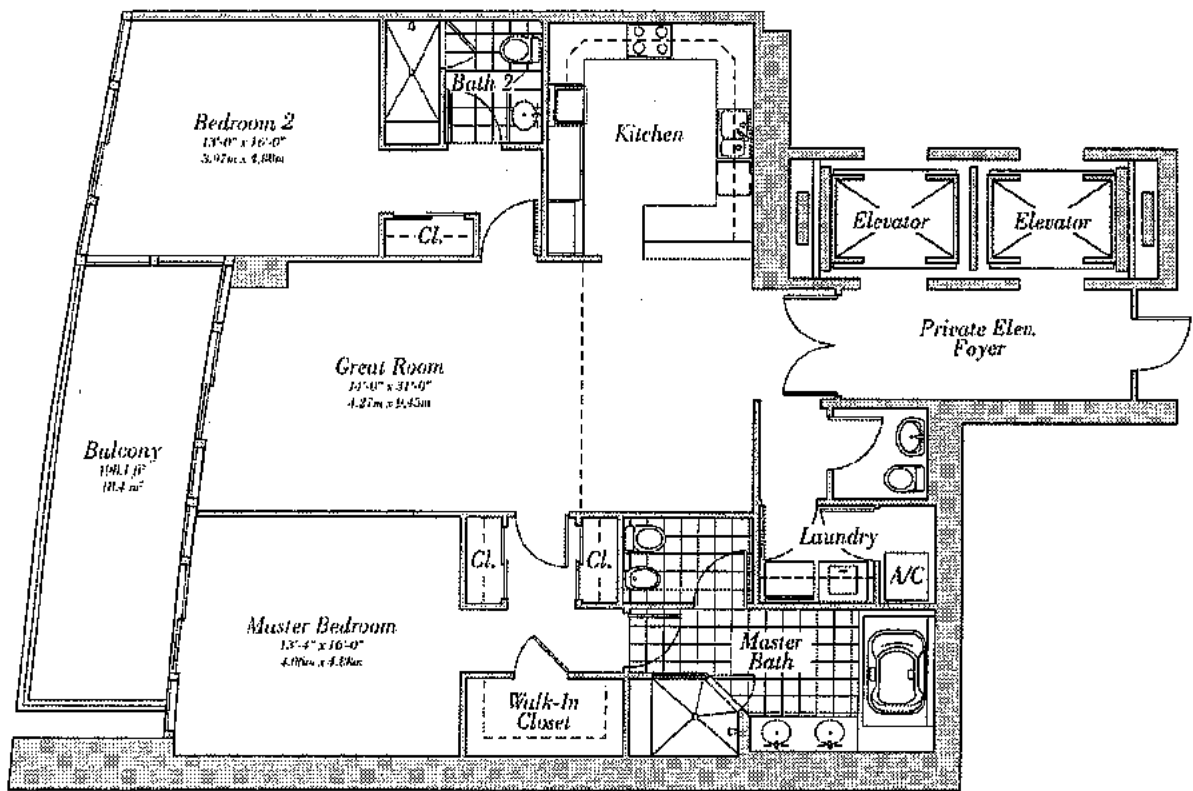


CONTINUUM
ON SOUTH BEACH

Residence 24

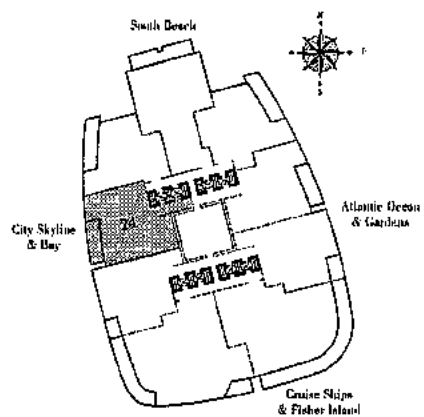
Floors 27-29

2 Bedroom, 2 Bath, Powder Room
1,735 s.f. 161.2 m²



Residence Features:

- 10' ceilings
- Private, oversized balconies with glass railings
- Floor-to-ceiling sliding glass doors to balconies with tempered, tinted glass designed to meet hurricane standards of the South Florida Building code.
- Master Bathrooms
 - Imported marble counter tops, backsplash, and whirlpool deck
 - Imported marble flooring in wet areas and shower
 - Kohler fixtures
 - Whirlpool tub with waterfall spout
 - European bathroom vanity cabinets with high-gloss finish
 - Seamless glass shower doors
 - Full length mirror
- Second Bathroom
 - Imported marble flooring in wet areas and shower
 - Imported marble tops and backsplash
 - European bathroom vanity cabinets with high-gloss finish
 - Glass enclosure for shower stalls
- Powder Room
 - Kohler fixtures
 - Pedestal sink
- Kitchen
 - Custom, imported European solid-body
 - Granite countertops and glass-backsplash
 - Under-cabinet lighting
 - Variable speed, overhead range hood
 - Sub-zero 30" built-in refrigerator/freezer
 - Marble backsplashed walling
 - Marble countertop oven
 - Marble integrated dishwasher
 - KitchenAid full-size microwave oven
 - Wine chiller in cabinet installation
 - Single-lever faucet with pull-out spray
- Laundry
 - Maytag Neptune front-load washer
 - Maytag Neptune front-load electric dryer
- Pre-wiring for multiple telephone lines
- Pre-wiring for security systems
- Pre-wiring for cable TV
- 100 millibeam wood entry doors
- 54db-rated sound insulation doors

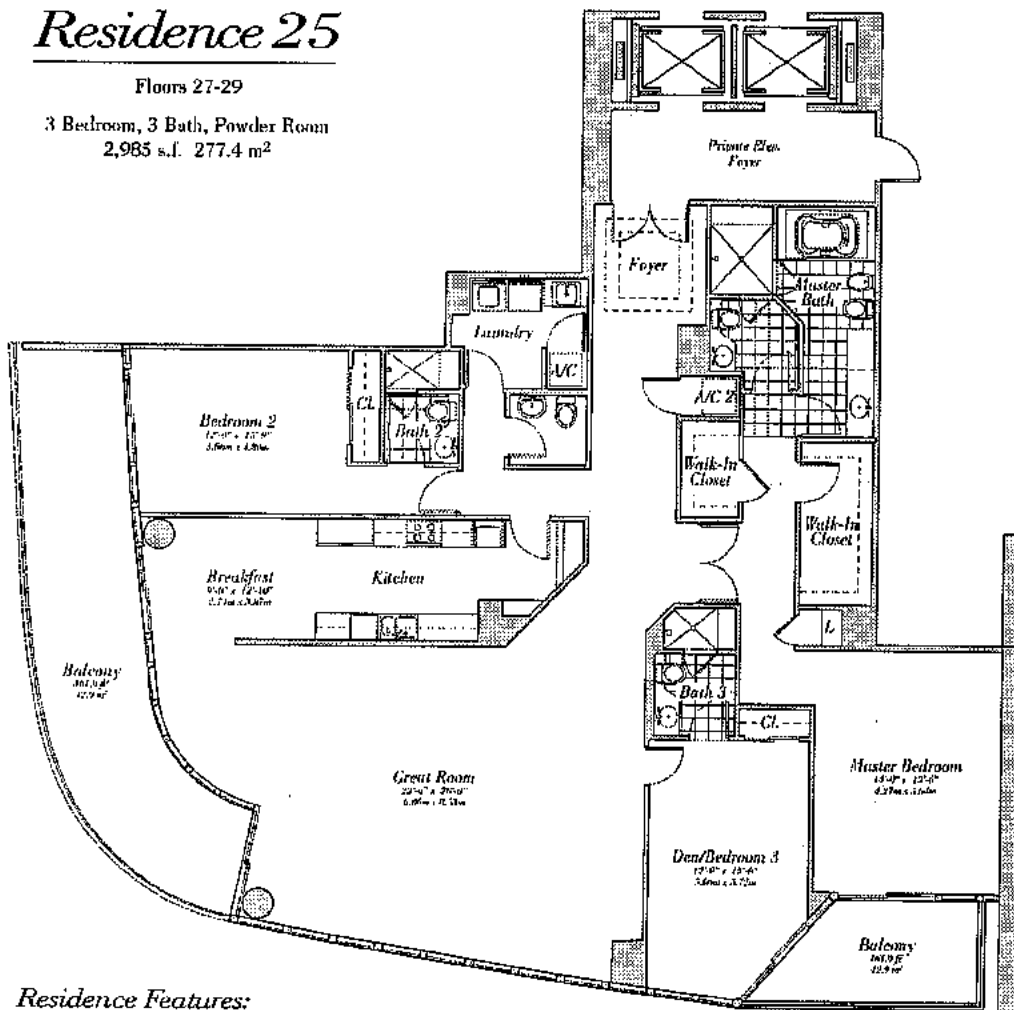


CONTINUUM
ON SOUTH BEACH

Residence 25

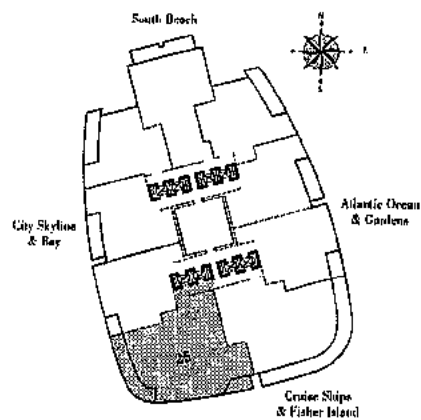
Floors 27-29

3 Bedroom, 3 Bath, Powder Room
2,985 s.f. 277.4 m²



Residence Features:

- 10' ceilings
- Private, oversized balconies with glass railings
- Floor-to-ceiling sliding glass doors to balconies with tempered, laminated glass designed to meet hurricane standards of the South Florida Building code.
- Master Bedroom
 - Imported marble counter tops, backsplash, and whirlpool decks
 - Imported marble flooring in wet areas and shower
 - Kohler fixtures
 - Whirlpool tub with waterfall spout
 - European bathroom vanity cabinets with high-gloss finish
 - Seamless glass shower doors
 - Full length mirror
- Second Bedroom
 - Imported marble flooring in wet areas and shower
 - Imported marble tops and backsplash
 - European bathroom vanity cabinets with high-gloss finish
 - Glass enclosure for shower stalls
- Powder Room
 - Kohler fixtures
 - Porcelain sink
- Kitchen
 - Custom, imported European cabinetry
 - Granite countertops and glass-look backsplash
 - Under-counter lighting
 - Variable speed, circulating range hood
 - Sub-zero 48" built-in refrigerator freezer
 - Multiple touch-control cooktop
 - Built-in electric conventional oven
 - Built-in integrated dishwasher
 - KitchenAid full-size microwave oven
 - Wine chiller in select residences
 - Single-door freezer with pull-out spout
- Laundry
 - Drying Napaite front-load washer
 - Drying Napaite front load electric dryer
- Pre-wiring for multiple telephone lines
- Pre-wiring for security systems
- Pre-wiring for cable TV
- Full wide-open wood entry doors
- Solid-core wood interior doors



CONTINUUM
ON SOUTH BEACH

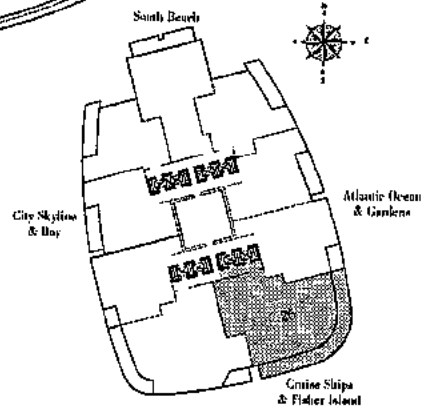
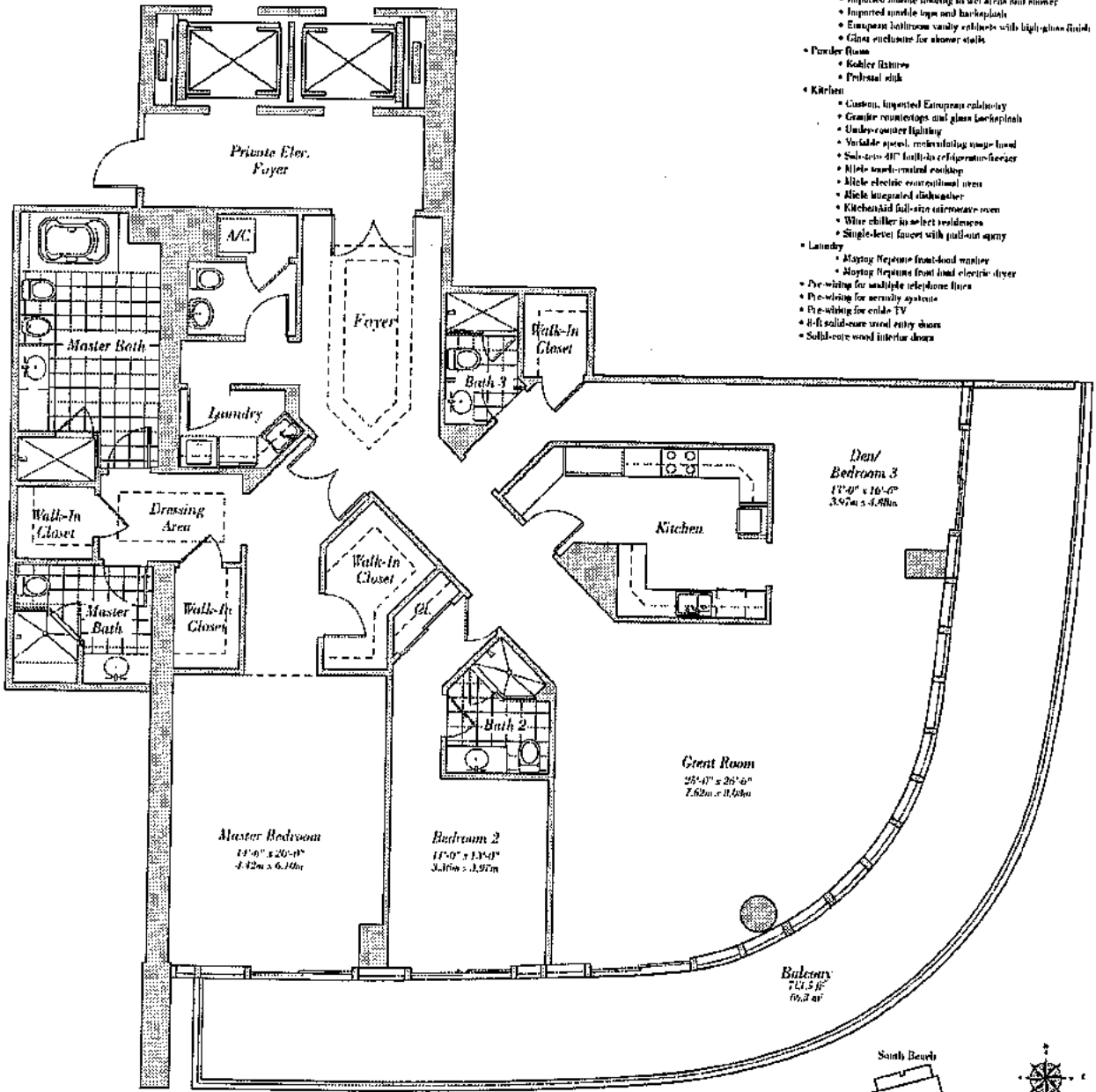
Residence 26

Floors 27-29

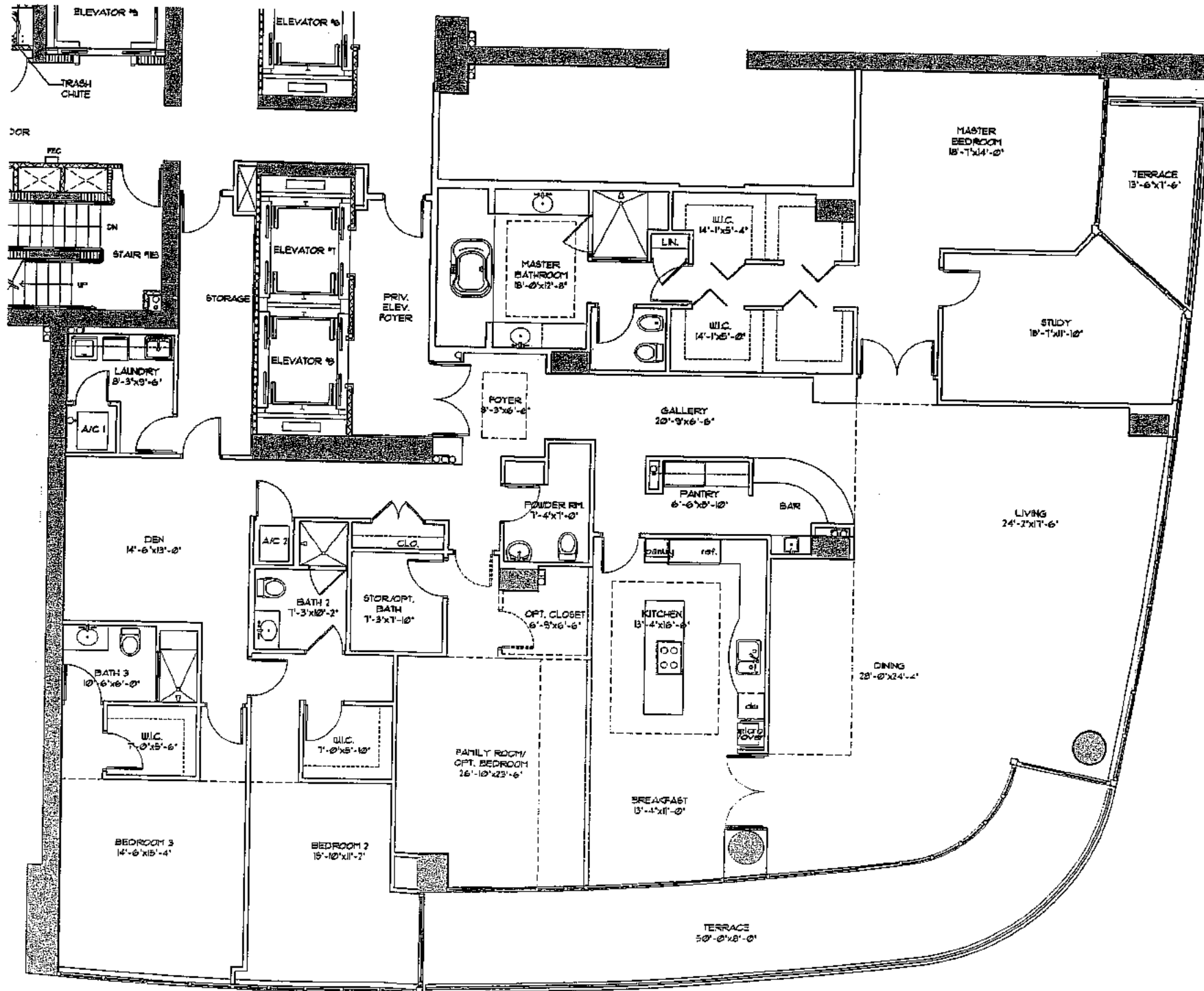
2 Bedroom, 1 Den/Bedroom, 4 Bath, Powder Room
2,847 s.f. 264.6 m²

Residence Features:

- 10' ceilings
- Private, overhead balconies with glass railings
- Floor-to-ceiling sliding glass doors in balconies with tempered, tinted glass designed to meet hurricane standards of the South Florida Building code.
- **Master Bedroom:**
 - Imported marble counter tops, backsplashes, and whirlpool decks
 - Imported marble flooring in wet areas and shower
 - Kohler fixtures
 - Whirlpool tub with waterfall spout
 - European bathroom vanity cabinets with high-gloss finish
 - Seamless glass shower doors
 - Full length mirror
- **Second Bathroom:**
 - Imported marble flooring in wet areas and shower
 - Imported marble tops and backsplashes
 - European bathroom vanity cabinets with high-gloss finish
 - Glass enclosure for shower stalls
- **Powder Room:**
 - Kohler fixtures
 - Porcelain sink
- **Kitchen:**
 - Custom, imported European cabinetry
 - Granite countertops and glass backsplashes
 - Under-counter lighting
 - Variable speed, revolving range hood
 - Sub-zero 41" built-in refrigerator-freezer
 - 100% solid-wood cooktop
 - 100% electric countertop oven
 - 100% integrated dishwasher
 - Kitchenaid full-size convection oven
 - Wine chiller in select residences
 - Single-lever faucet with pull-out spray
- **Laundry:**
 - Maytag Neptune front-load washer
 - Maytag Neptune front load electric dryer
- Pre-wiring for multiple telephone lines
- Pre-wiring for security systems
- Pre-wiring for cable TV
- 8-ft solid-core wood entry doors
- Solid-core wood interior doors



CONTINUUM
ON SOUTH BEACH



Residence 27
22 Floor

3 Bedrooms, Den, Study, 3 1/2 Baths
 4,776 s.f. – 443.9m²
 Balcony 551 s.f. – 51.22m²

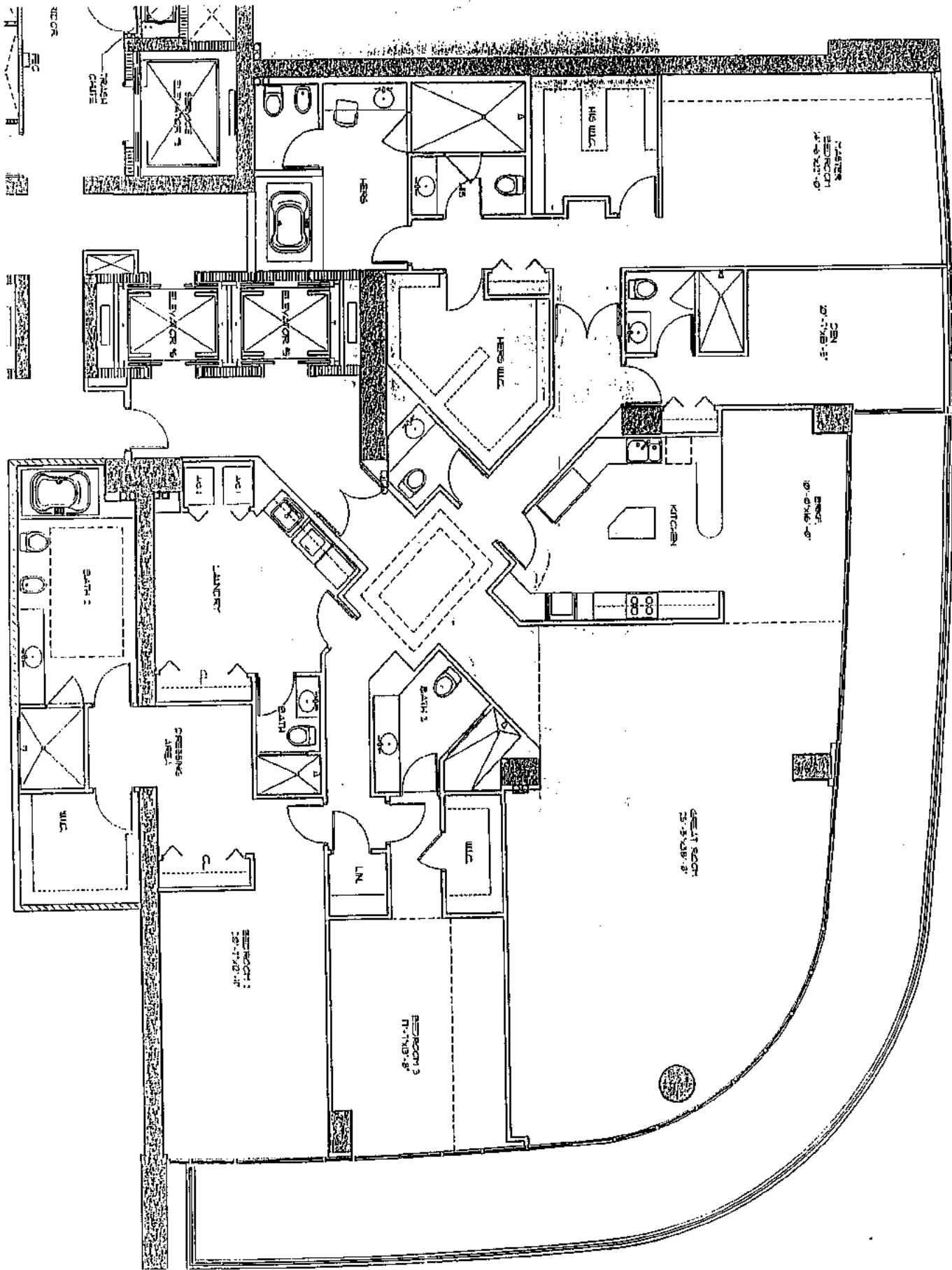
Residence 28

22 Floor

3 Bedrooms, Den, 5½ Baths

4,717s.f. - 438.4m²

Balcony 827s.f. - 76.8m²

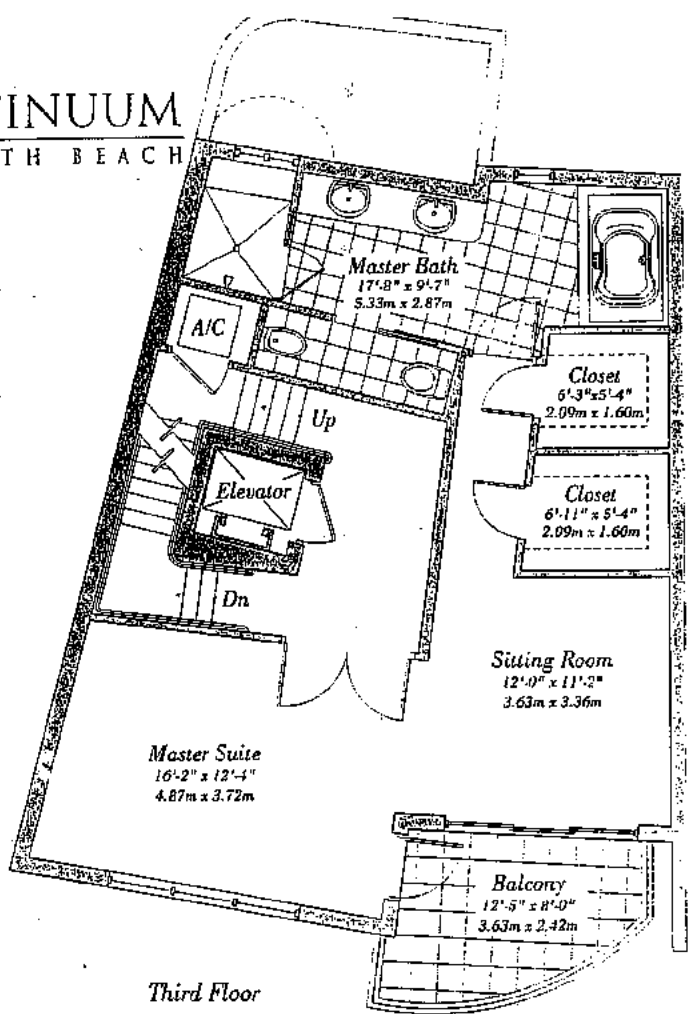
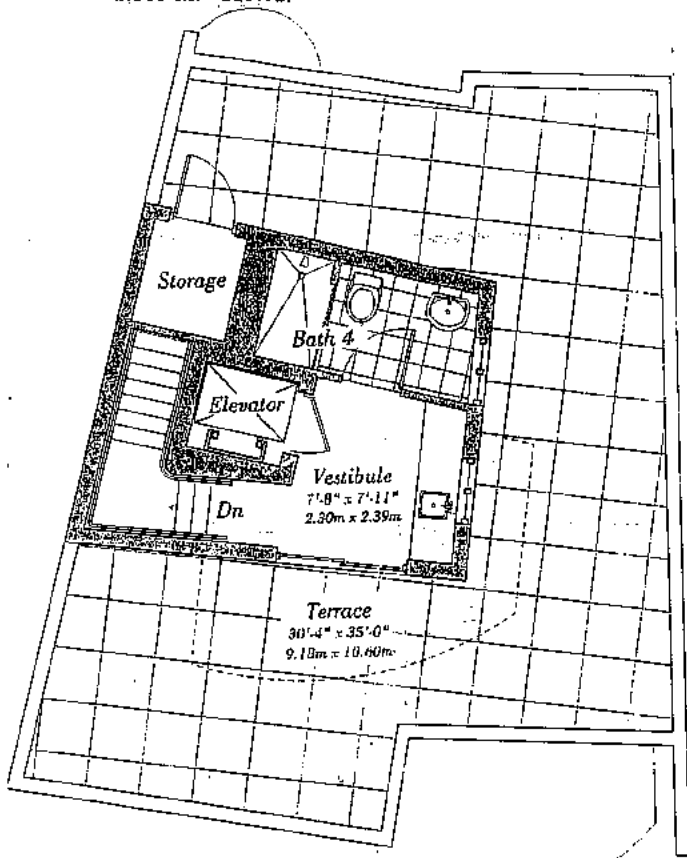


Beach House A

Residences 5-9

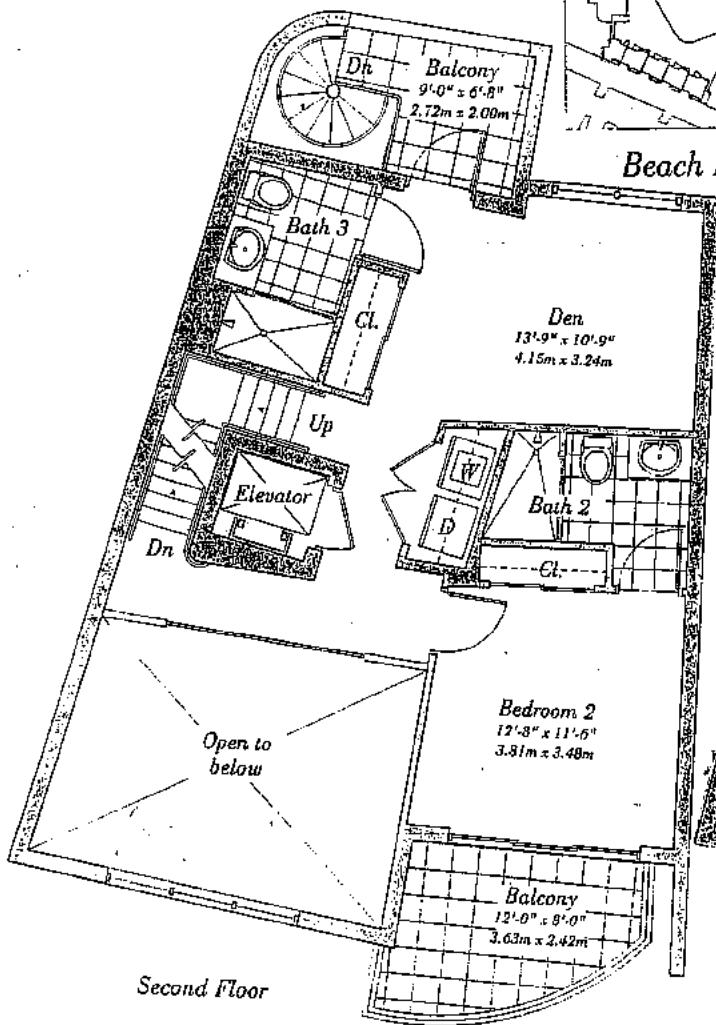
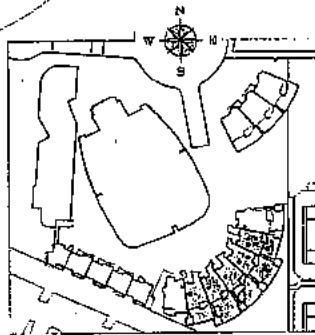
2 Bedrooms & Den, 4 Baths, Powder Room
2,365 s.f. 219.7m²

CONTINUUM ON SOUTH BEACH

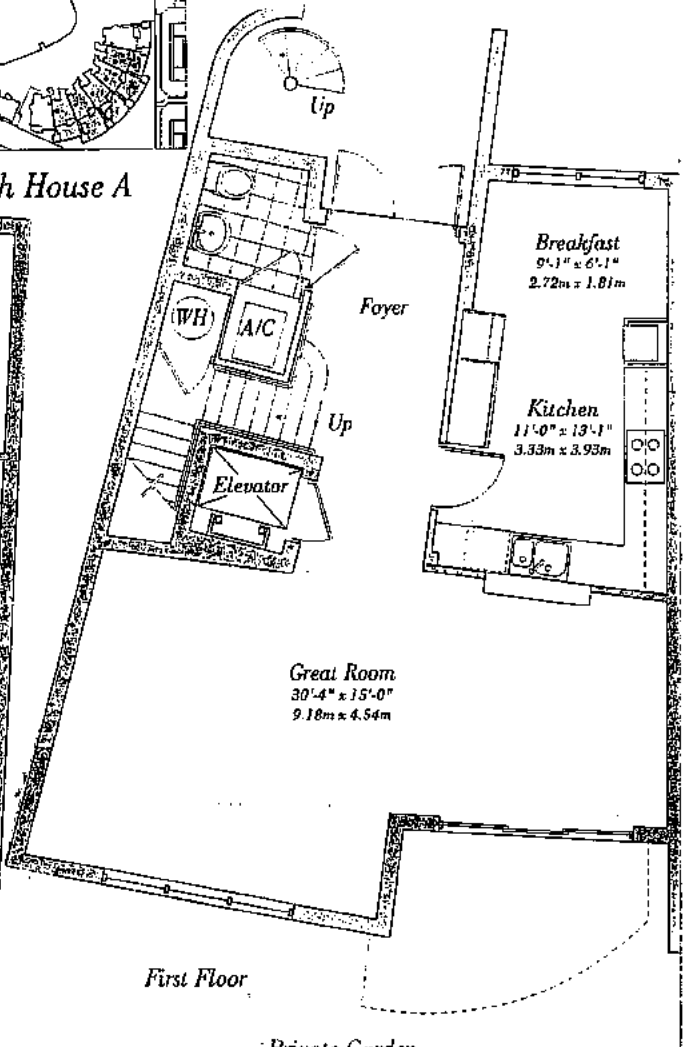


Roof Terrace

Third Floor



Second Floor



First Floor

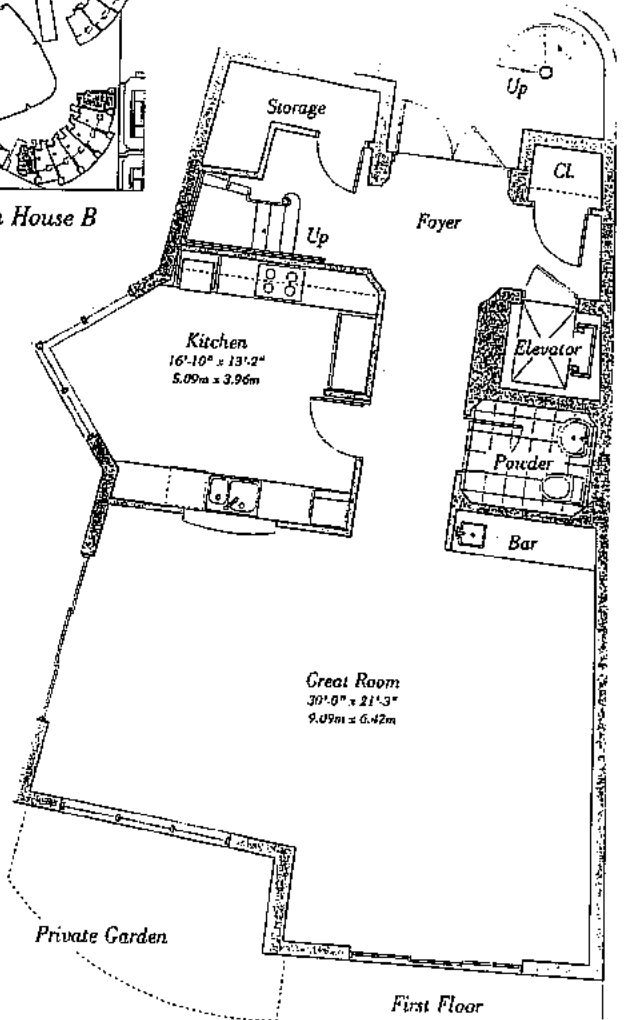
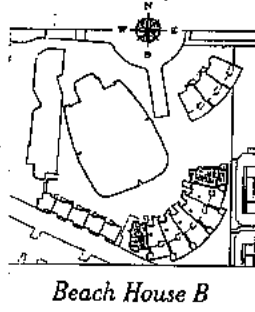
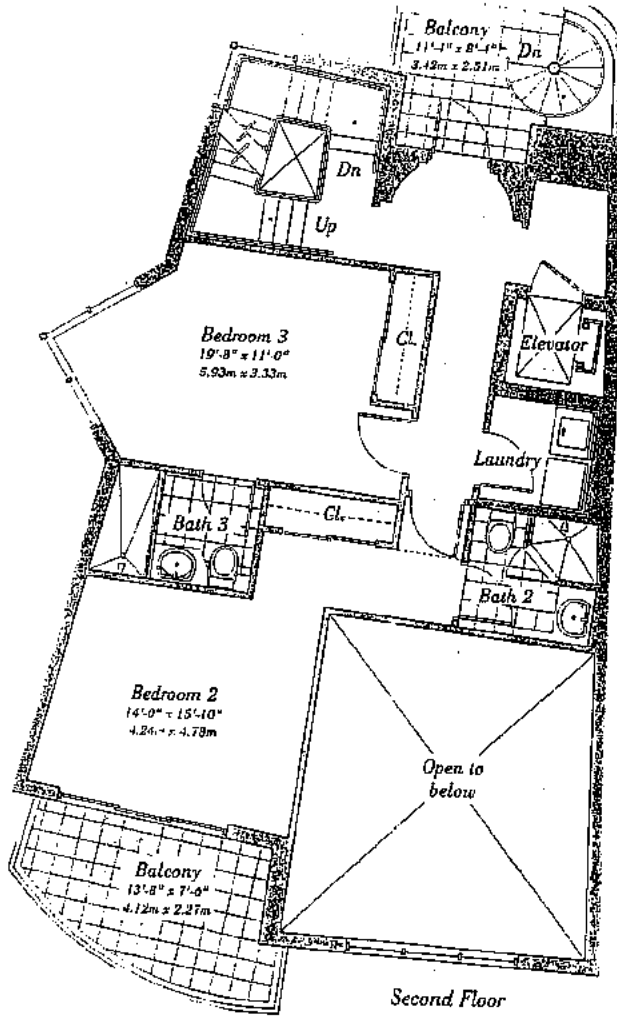
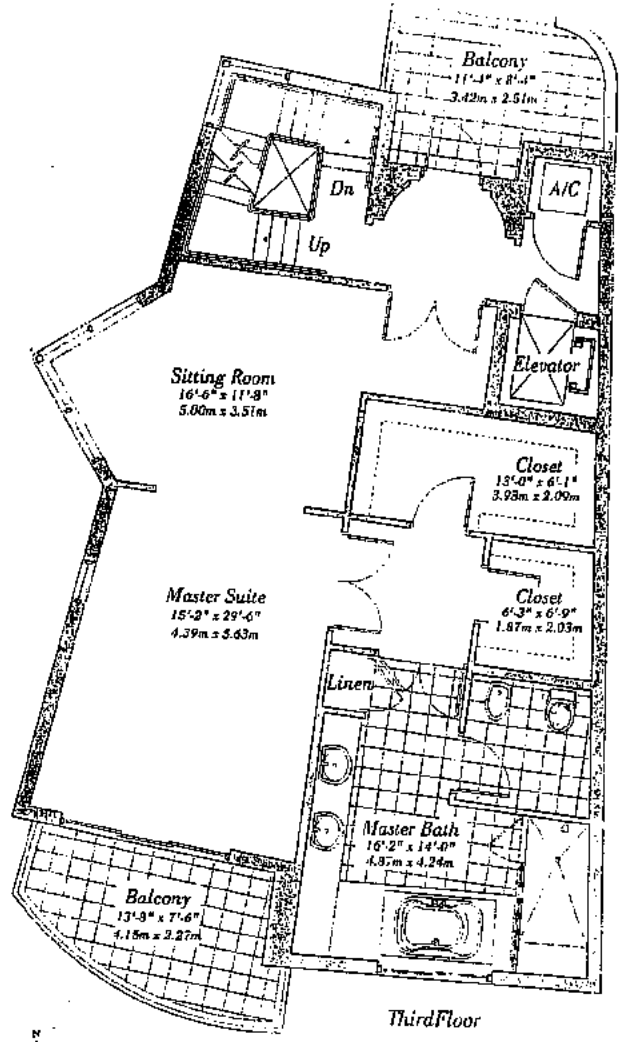
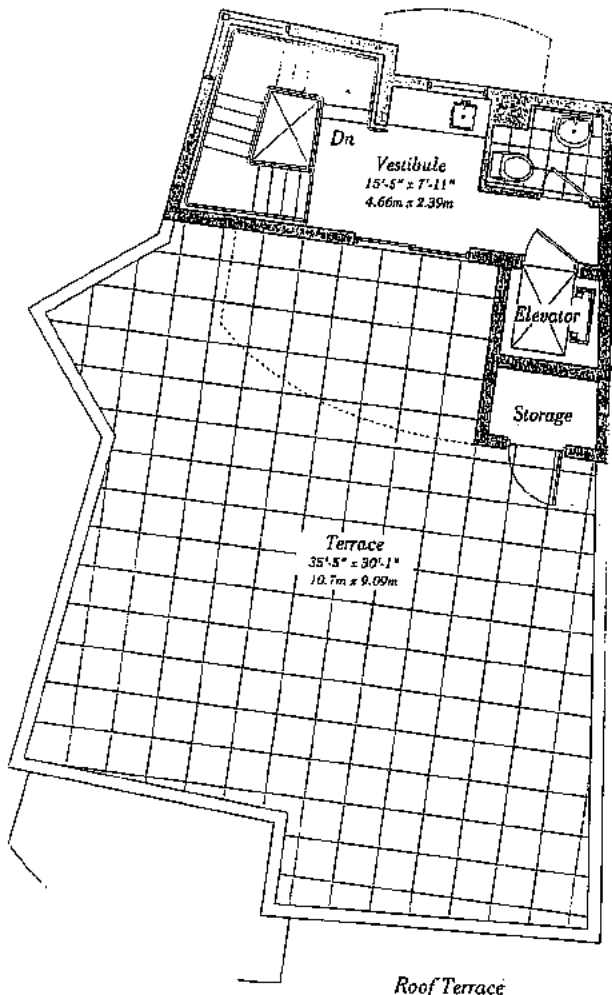
Private Garden

Beach House B

Residences 4 & 10

3 Bedrooms, 3 baths, 2 Powder Rooms
2,900 s.f. 269.5m²

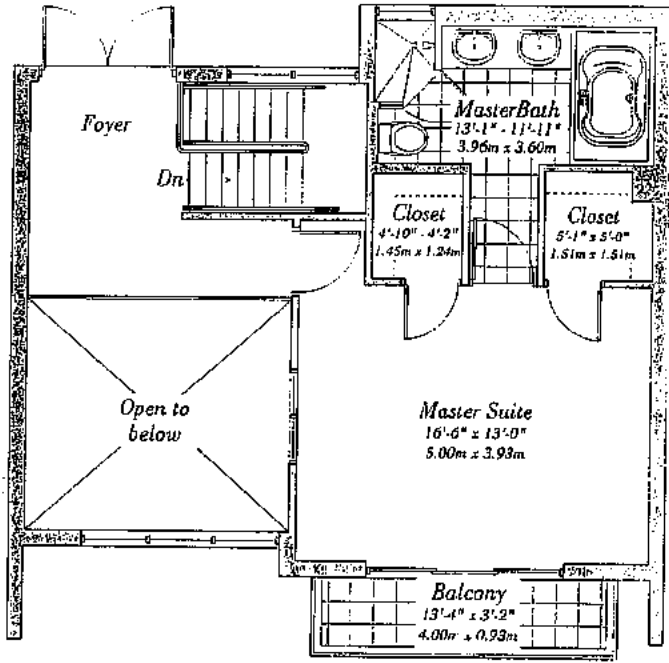
CONTINUUM
ON SOUTH BEACH



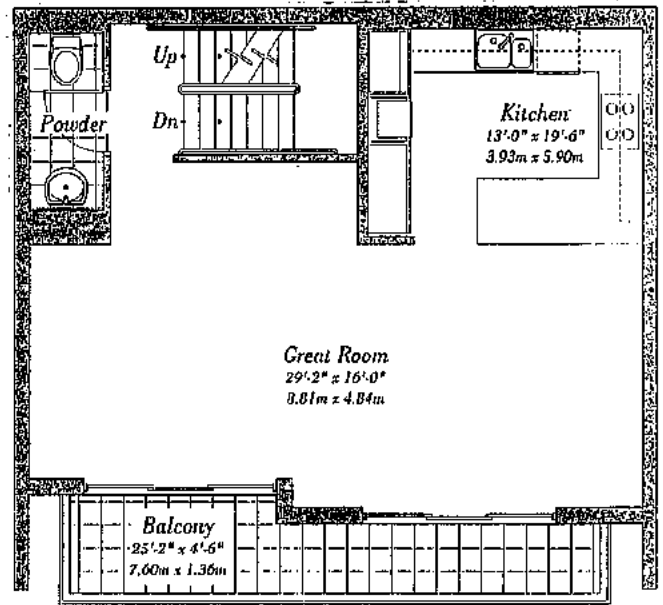
Beach House C

Residences 11-14

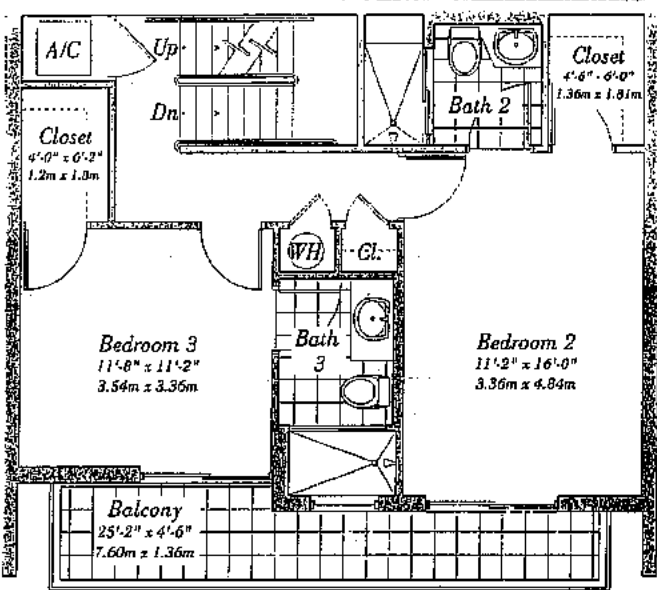
3 Bedrooms, 3 Baths, Powder Room
2,202 s.f. 204.6m²



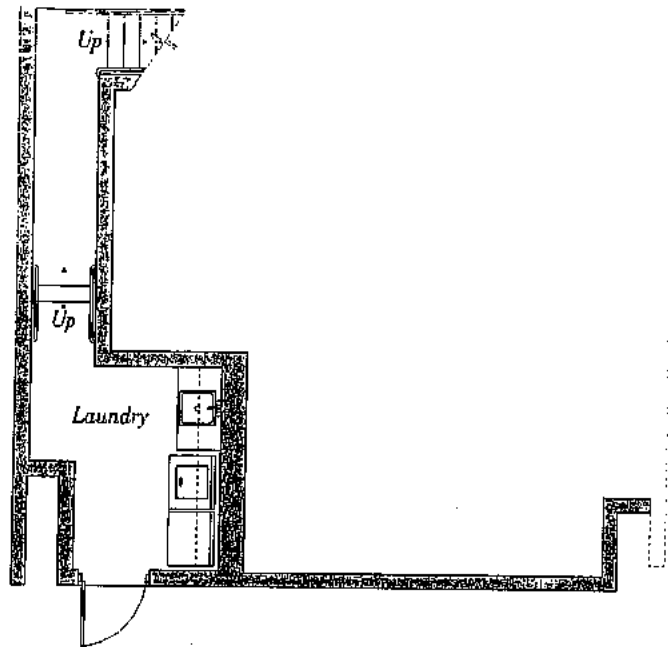
Third Floor



Second Floor

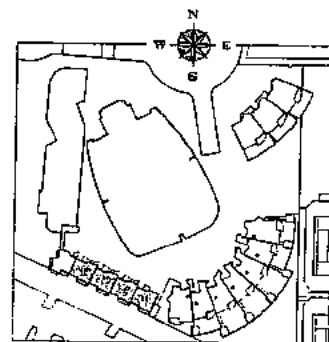


First Floor



Ground Floor

CONTINUUM
ON SOUTH BEACH



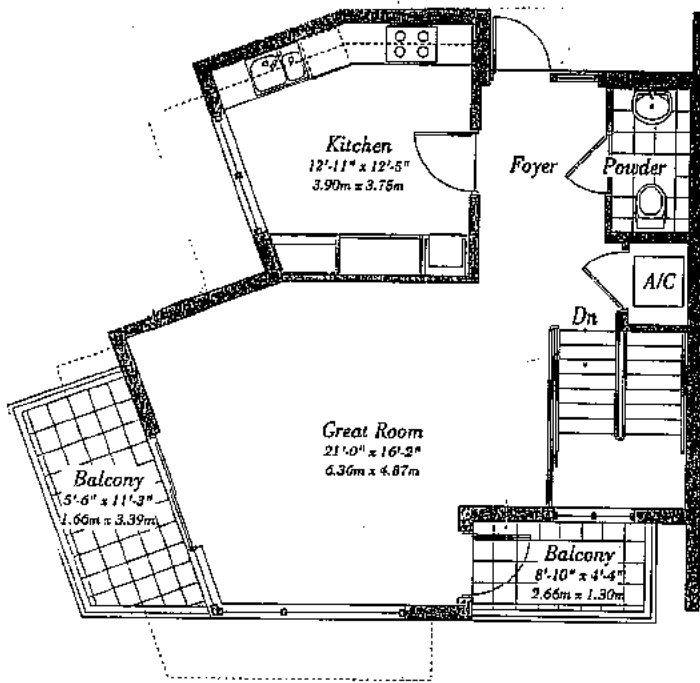
Beach House C

Beach House D

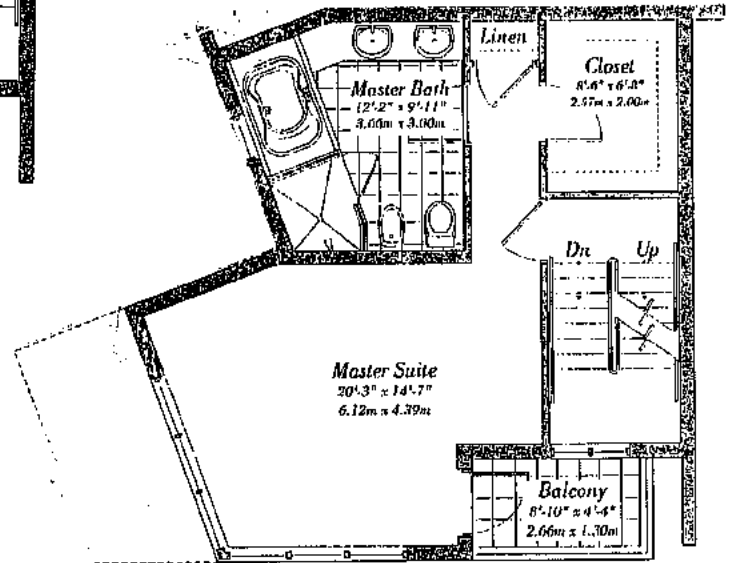
Residence 15

3 Bedrooms, 2 Baths, Powder Room
2,072 s.f. 251.1m²

CONTINUUM
ON SOUTH BEACH



Third Floor



Second Floor



Beach House E

Residence 1-3

2 Bedrooms, 3 Baths, Powder Room
2,518 s.f. 234.01m²

CONTINUUM
ON SOUTH BEACH

