



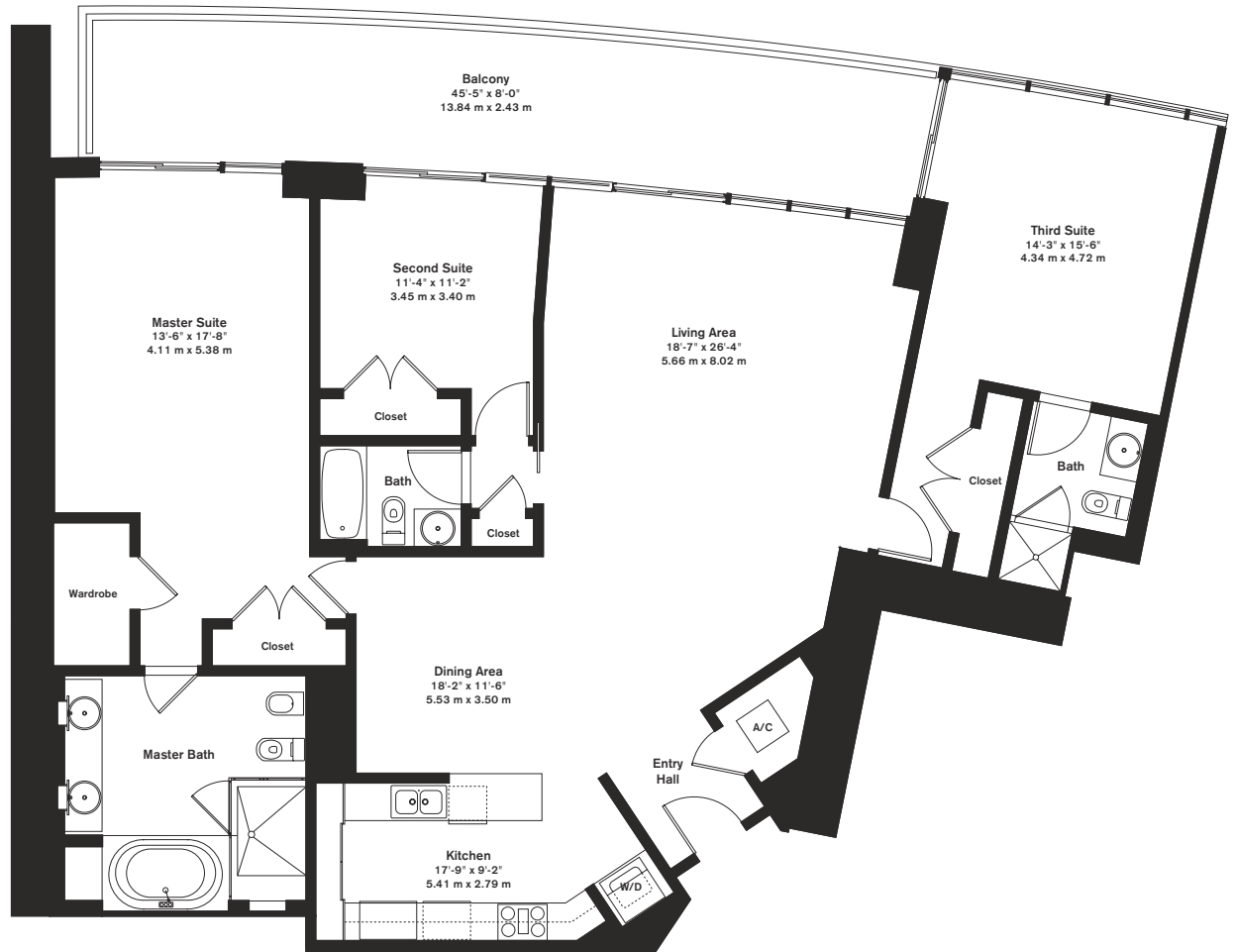
## residence D

3 bedrooms, 3 baths

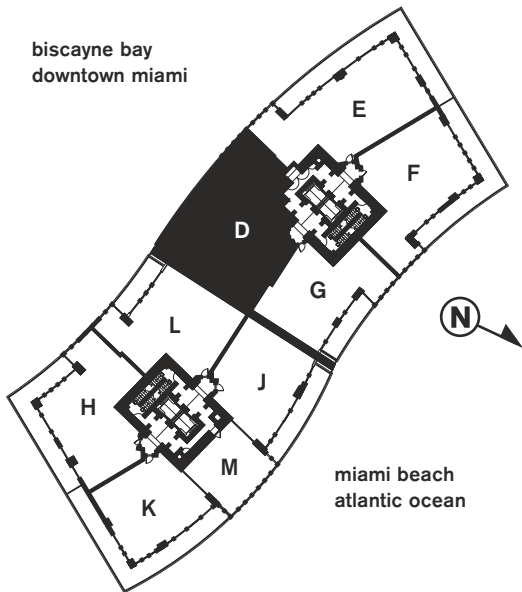
2,158 sq. ft. 200.40 m<sup>2</sup>

358 sq. ft. 33.25 m<sup>2</sup> balcony

2,516 sq. ft. 233.65 m<sup>2</sup> total



biscayne bay  
downtown miami



miami beach  
atlantic ocean

Stated dimensions are measured to the exterior boundaries of the exterior walls and the centerline of interior demising walls and in fact vary from the dimensions that would be determined by using the description and definition of the "Unit" set forth in the Declaration (which generally only includes the interior airspace between the perimeter walls and excludes interior structural components). All dimensions are approximate, and all floor plans and development plans are subject to change.



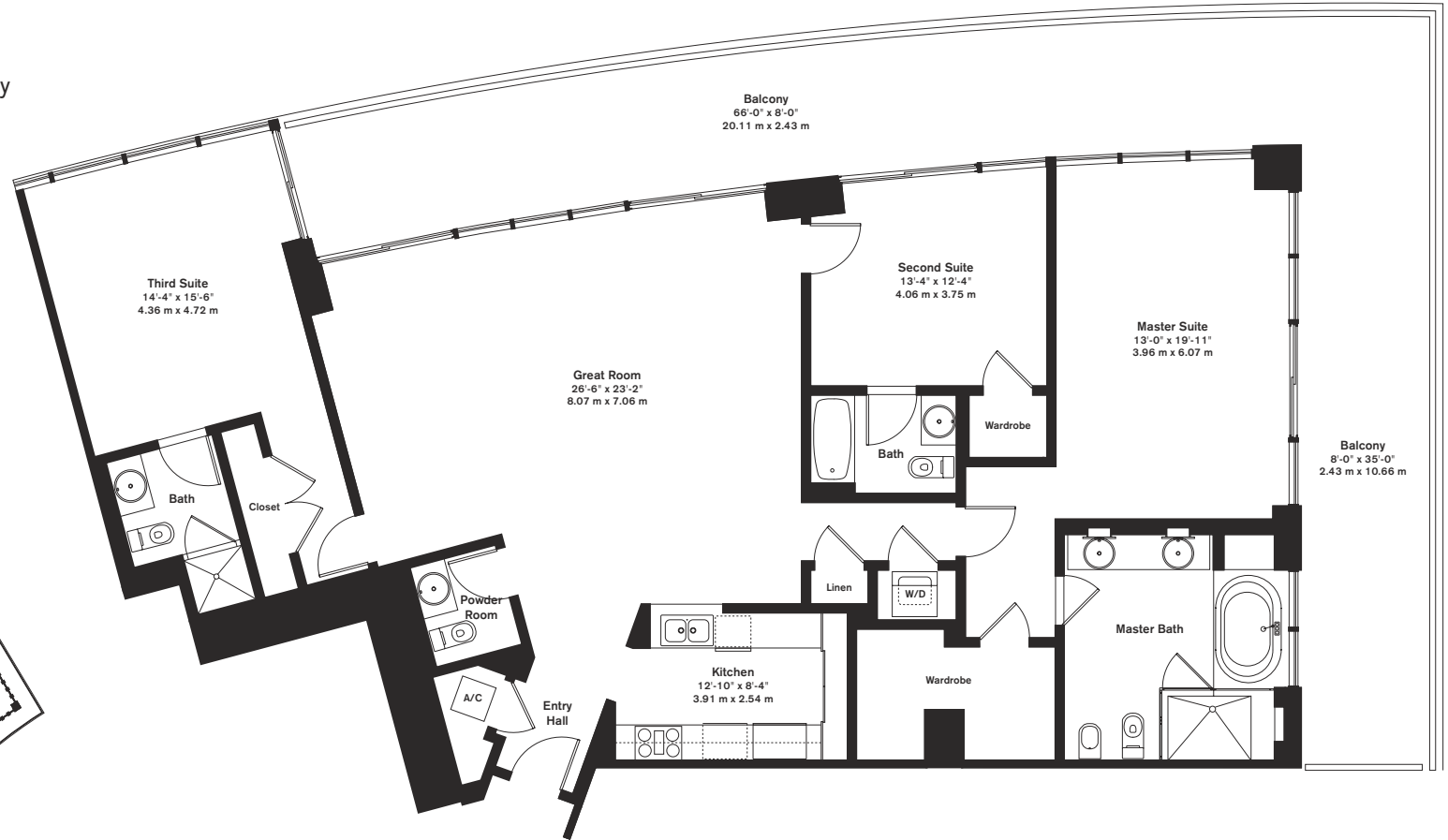
## residence E

3 bedrooms, 3.5 baths

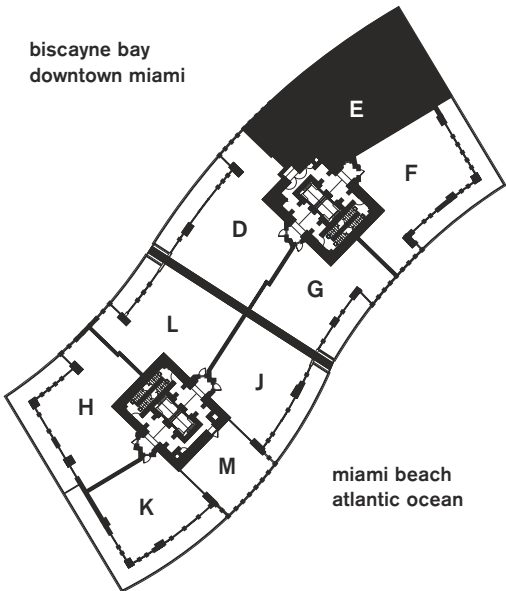
2,145 sq. ft. 199.20 m<sup>2</sup>

797 sq. ft. 74.00 m<sup>2</sup> balcony

2,942 sq. ft. 273.20 m<sup>2</sup> total



biscayne bay  
downtown miami



miami beach  
atlantic ocean

Stated dimensions are measured to the exterior boundaries of the exterior walls and the centerline of interior demising walls and in fact vary from the dimensions that would be determined by using the description and definition of the "Unit" set forth in the Declaration (which generally only includes the interior airspace between the perimeter walls and excludes interior structural components). All dimensions are approximate, and all floor plans and development plans are subject to change.



# residence F

2 bedrooms, 2.5 baths

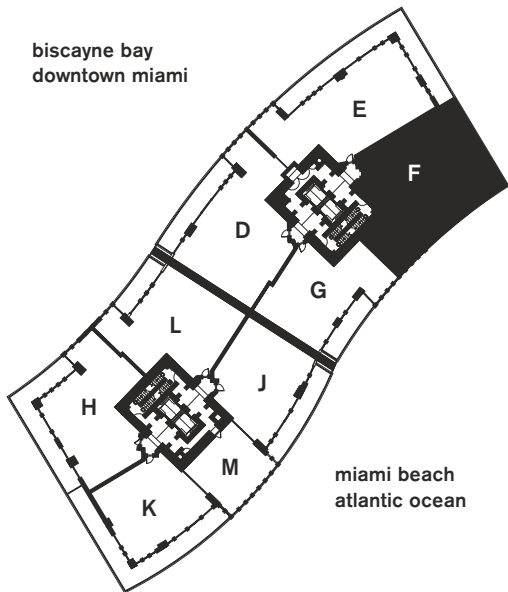
1,933 sq. ft. 179.50 m<sup>2</sup>

631 sq. ft. 58.60 m<sup>2</sup> balcony

2,564 sq. ft. 238.10 m<sup>2</sup> total



biscayne bay  
downtown miami



miami beach  
atlantic ocean

Stated dimensions are measured to the exterior boundaries of the exterior walls and the centerline of interior demising walls and in fact vary from the dimensions that would be determined by using the description and definition of the "Unit" set forth in the Declaration (which generally only includes the interior airspace between the perimeter walls and excludes interior structural components). All dimensions are approximate, and all floor plans and development plans are subject to change.



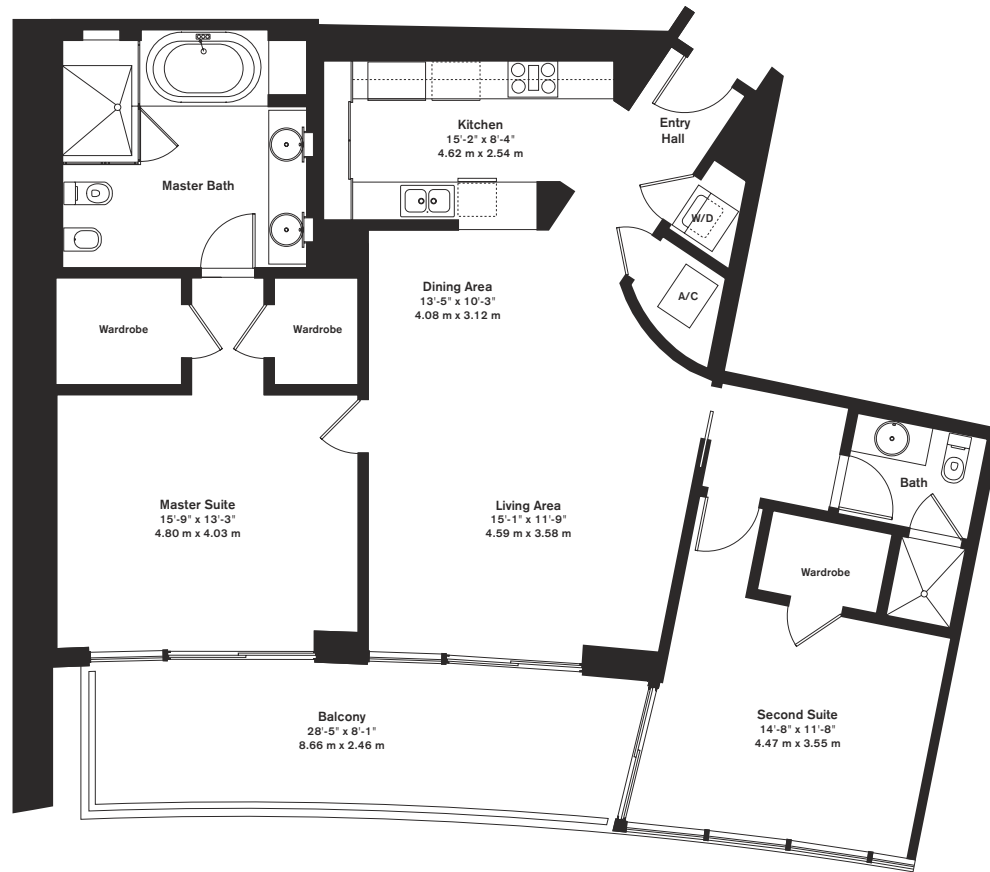
## residence G

2 bedrooms, 2 baths

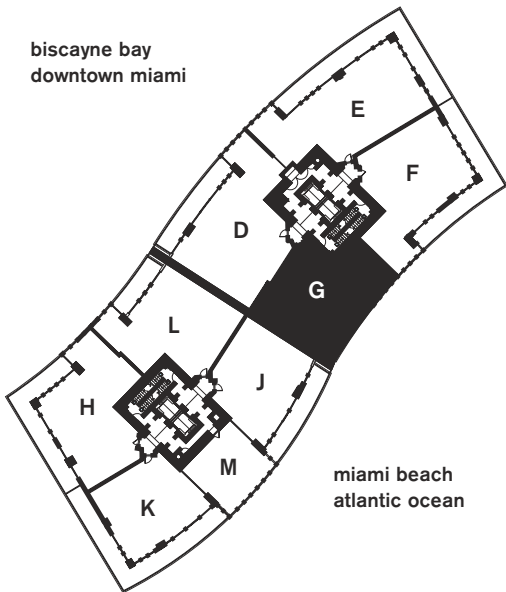
1,536 sq. ft. 142.70 m<sup>2</sup>

226 sq. ft. 21.00 m<sup>2</sup> balcony

1,762 sq. ft. 163.70 m<sup>2</sup> total



biscayne bay  
downtown miami



miami beach  
atlantic ocean

Stated dimensions are measured to the exterior boundaries of the exterior walls and the centerline of interior demising walls and in fact vary from the dimensions that would be determined by using the description and definition of the "Unit" set forth in the Declaration (which generally only includes the interior airspace between the perimeter walls and excludes interior structural components). All dimensions are approximate, and all floor plans and development plans are subject to change.



## residence H

2 bedrooms, 2.5 baths

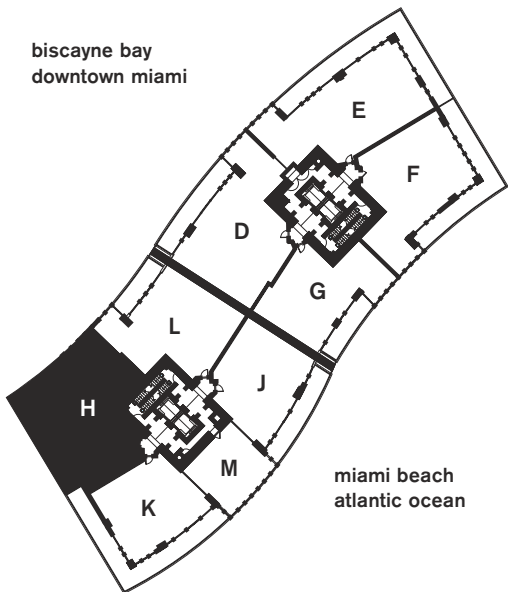
1,815 sq. ft. 168.60 m<sup>2</sup>

549 sq. ft. 51.00 m<sup>2</sup> balcony

2,364 sq. ft. 219.60 m<sup>2</sup> total



biscayne bay  
downtown miami



Stated dimensions are measured to the exterior boundaries of the exterior walls and the centerline of interior demising walls and in fact vary from the dimensions that would be determined by using the description and definition of the "Unit" set forth in the Declaration (which generally only includes the interior airspace between the perimeter walls and excludes interior structural components). All dimensions are approximate, and all floor plans and development plans are subject to change.



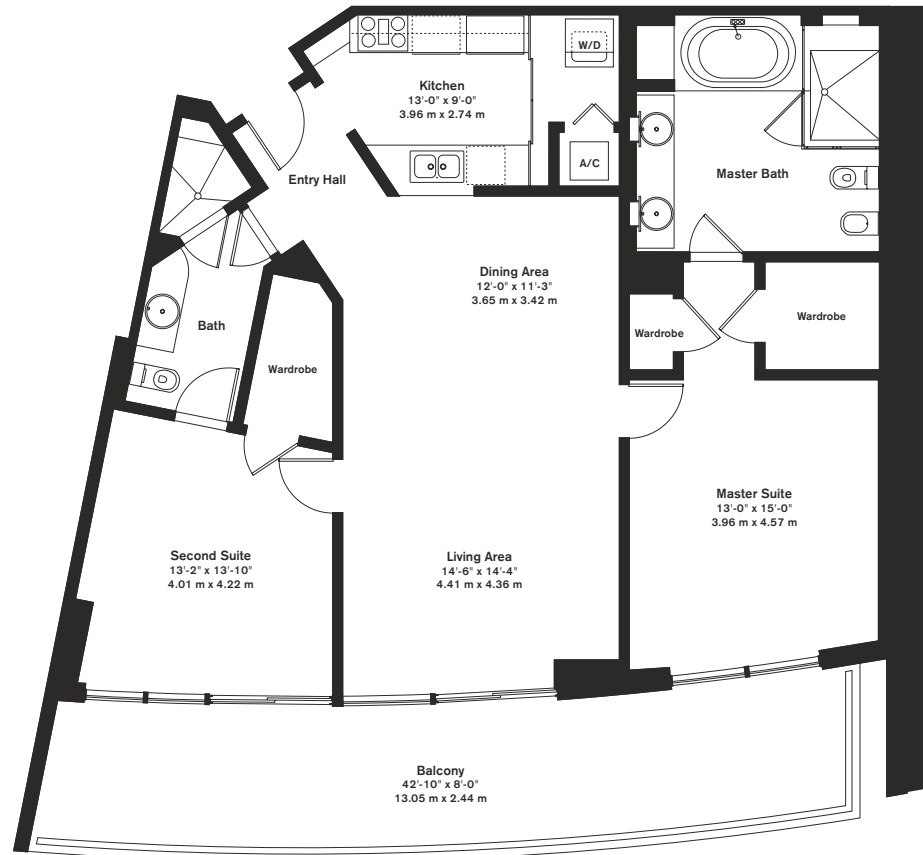
## residence J

2 bedrooms, 2 baths

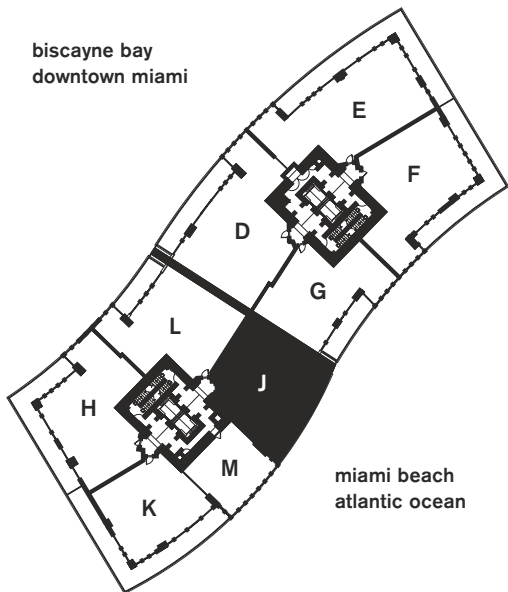
1,452 sq. ft. 134.80 m<sup>2</sup>

342 sq. ft. 31.70 m<sup>2</sup> balcony

1,794 sq. ft. 166.50 m<sup>2</sup> total



biscayne bay  
downtown miami



Stated dimensions are measured to the exterior boundaries of the exterior walls and the centerline of interior demising walls and in fact vary from the dimensions that would be determined by using the description and definition of the "Unit" set forth in the Declaration (which generally only includes the interior airspace between the perimeter walls and excludes interior structural components). All dimensions are approximate, and all floor plans and development plans are subject to change.



## residence K

2 bedrooms, 2 baths

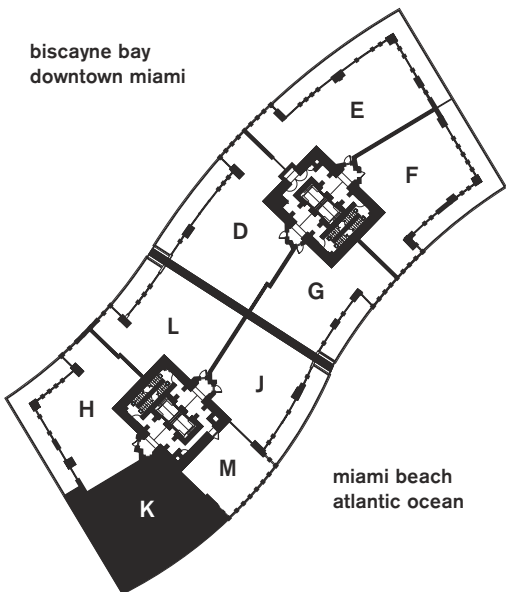
1,370 sq. ft. 127.20 m<sup>2</sup>

735 sq. ft. 68.20 m<sup>2</sup> balcony

2,105 sq. ft. 195.40 m<sup>2</sup> total



biscayne bay  
downtown miami



miami beach  
atlantic ocean

Stated dimensions are measured to the exterior boundaries of the exterior walls and the centerline of interior demising walls and in fact vary from the dimensions that would be determined by using the description and definition of the "Unit" set forth in the Declaration (which generally only includes the interior airspace between the perimeter walls and excludes interior structural components). All dimensions are approximate, and all floor plans and development plans are subject to change.



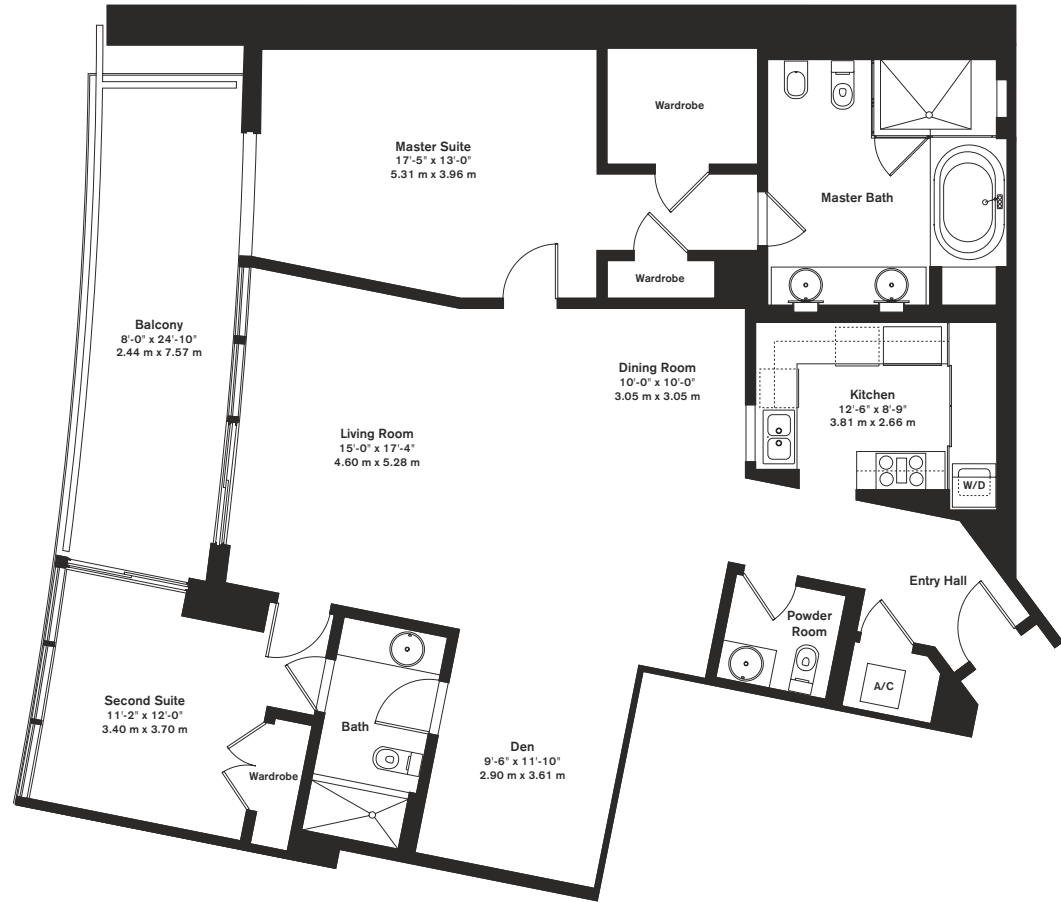
## residence L

2 bedrooms/den, 2 1/2 baths

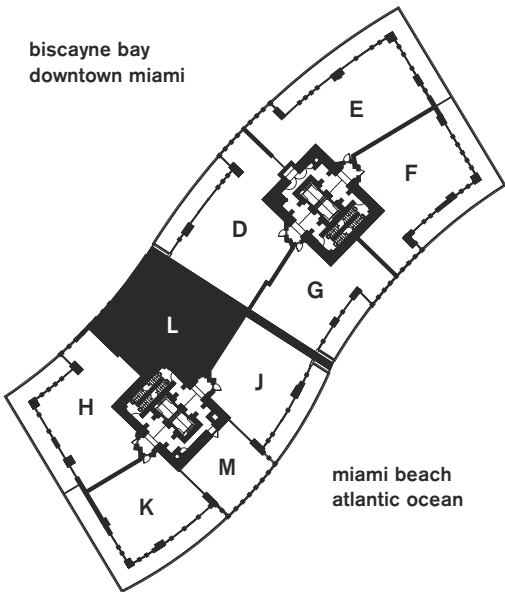
1,750 sq. ft. 162.50 m<sup>2</sup>

205 sq. ft. 19.00 m<sup>2</sup> balcony

1,955 sq. ft. 181.50 m<sup>2</sup> total



biscayne bay  
downtown miami



miami beach  
atlantic ocean

Stated dimensions are measured to the exterior boundaries of the exterior walls and the centerline of interior demising walls and in fact vary from the dimensions that would be determined by using the description and definition of the "Unit" set forth in the Declaration (which generally only includes the interior airspace between the perimeter walls and excludes interior structural components). All dimensions are approximate, and all floor plans and development plans are subject to change.

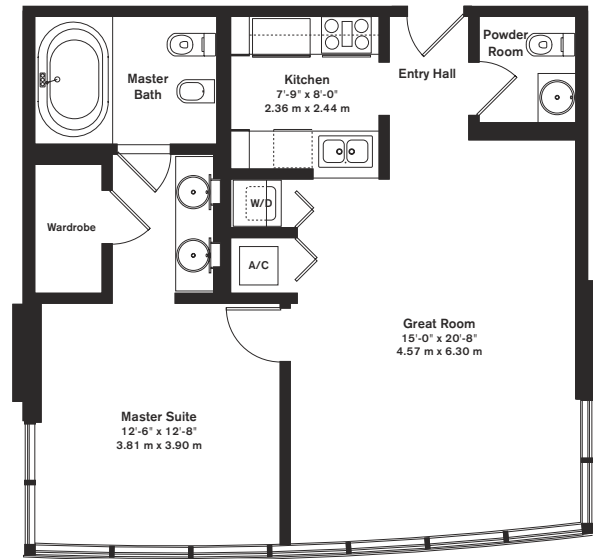




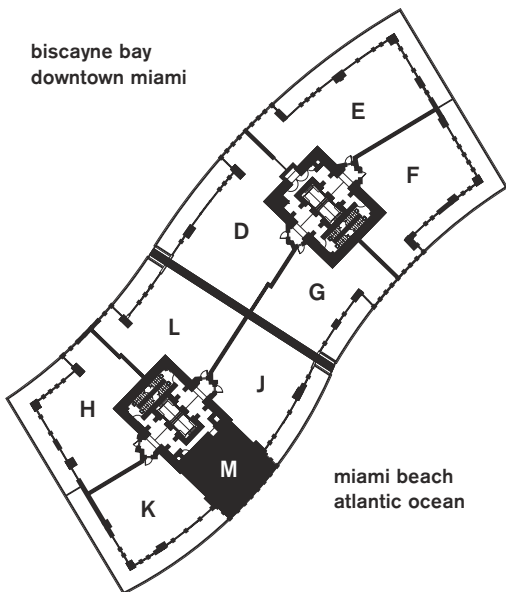
## residence M

1 bedrooms, 1.5 baths

851 sq. ft. 79.00 m<sup>2</sup> total



biscayne bay  
downtown miami



Stated dimensions are measured to the exterior boundaries of the exterior walls and the centerline of interior demising walls and in fact vary from the dimensions that would be determined by using the description and definition of the "Unit" set forth in the Declaration (which generally only includes the interior airspace between the perimeter walls and excludes interior structural components). All dimensions are approximate, and all floor plans and development plans are subject to change.