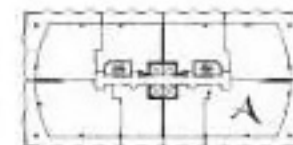
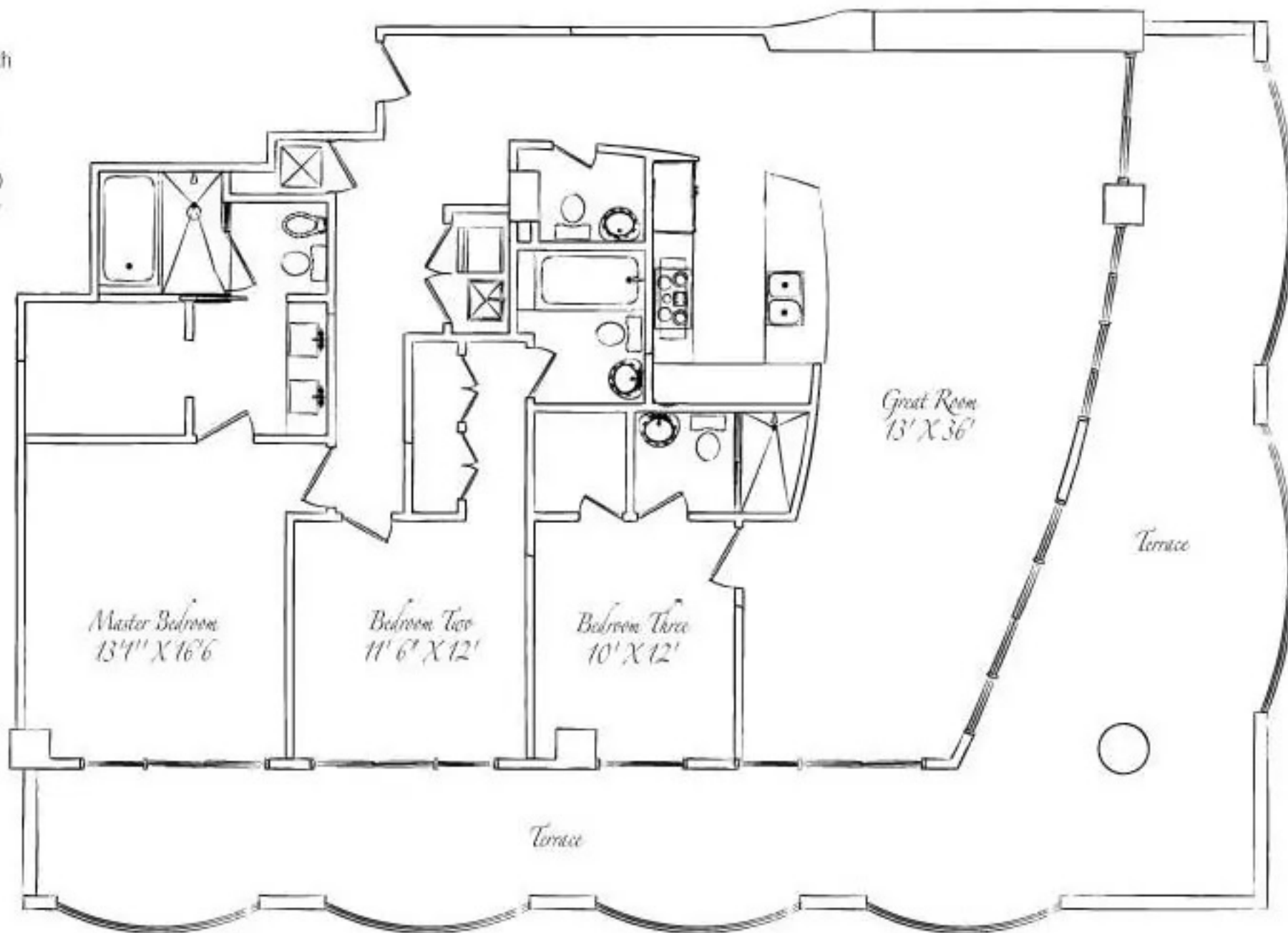




3 Bedroom - 3.5 Bath

Living Area:
1,807 sq.ft. (168m²)

Terrace Area:
from 775 sq.ft. (72m²)
to 1,045 sq.ft. (97m²)

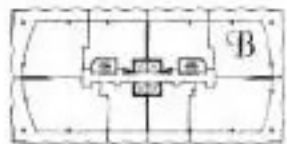
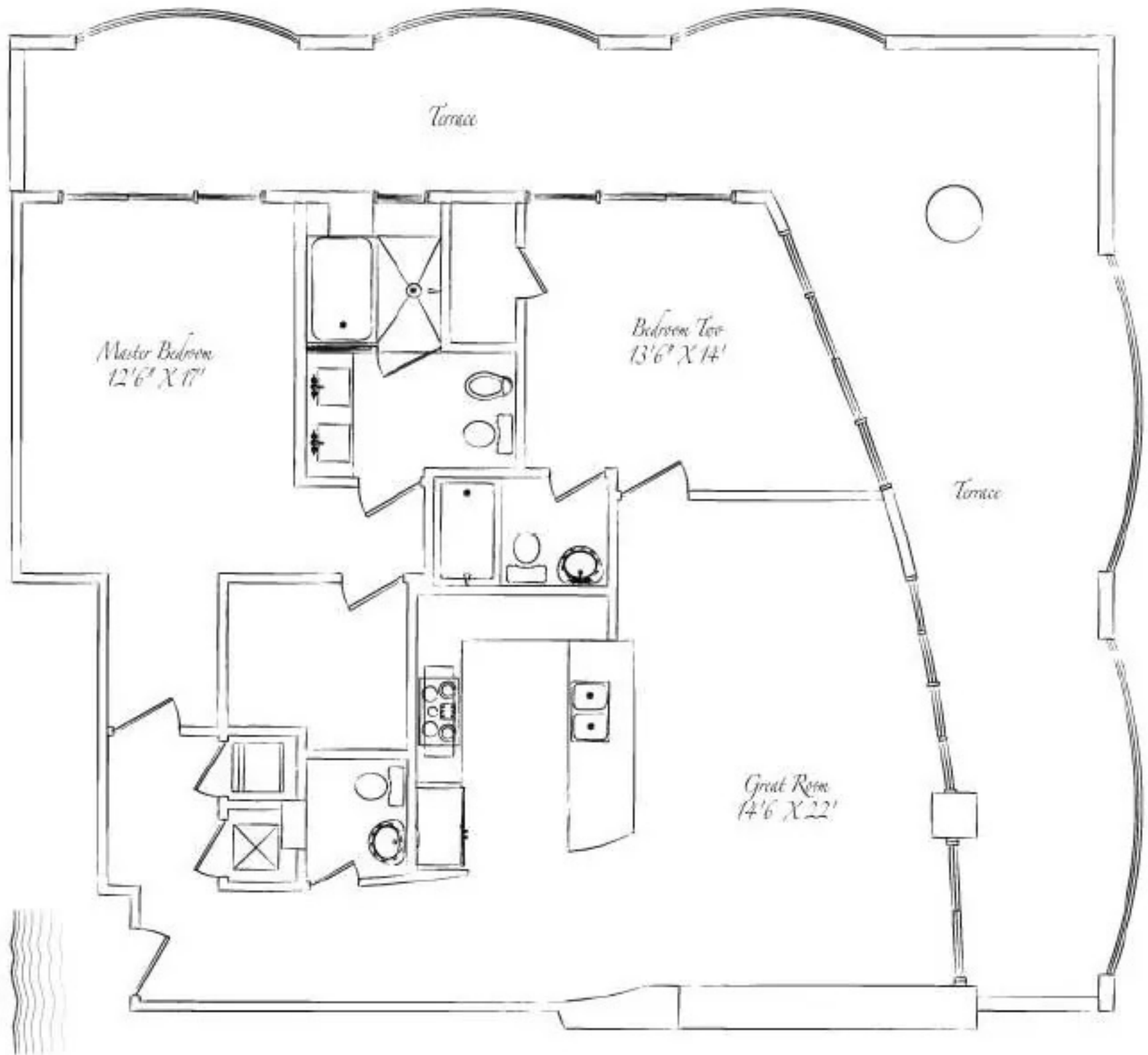


B

2 Bedroom - 2.5 Bath

Living Area:
1,395 sq.ft. (130m²)

Terrace Area:
from 678 sq.ft. (63m²)
to 918 sq.ft. (85m²)

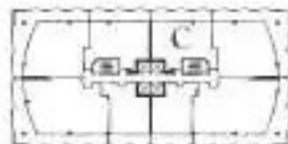
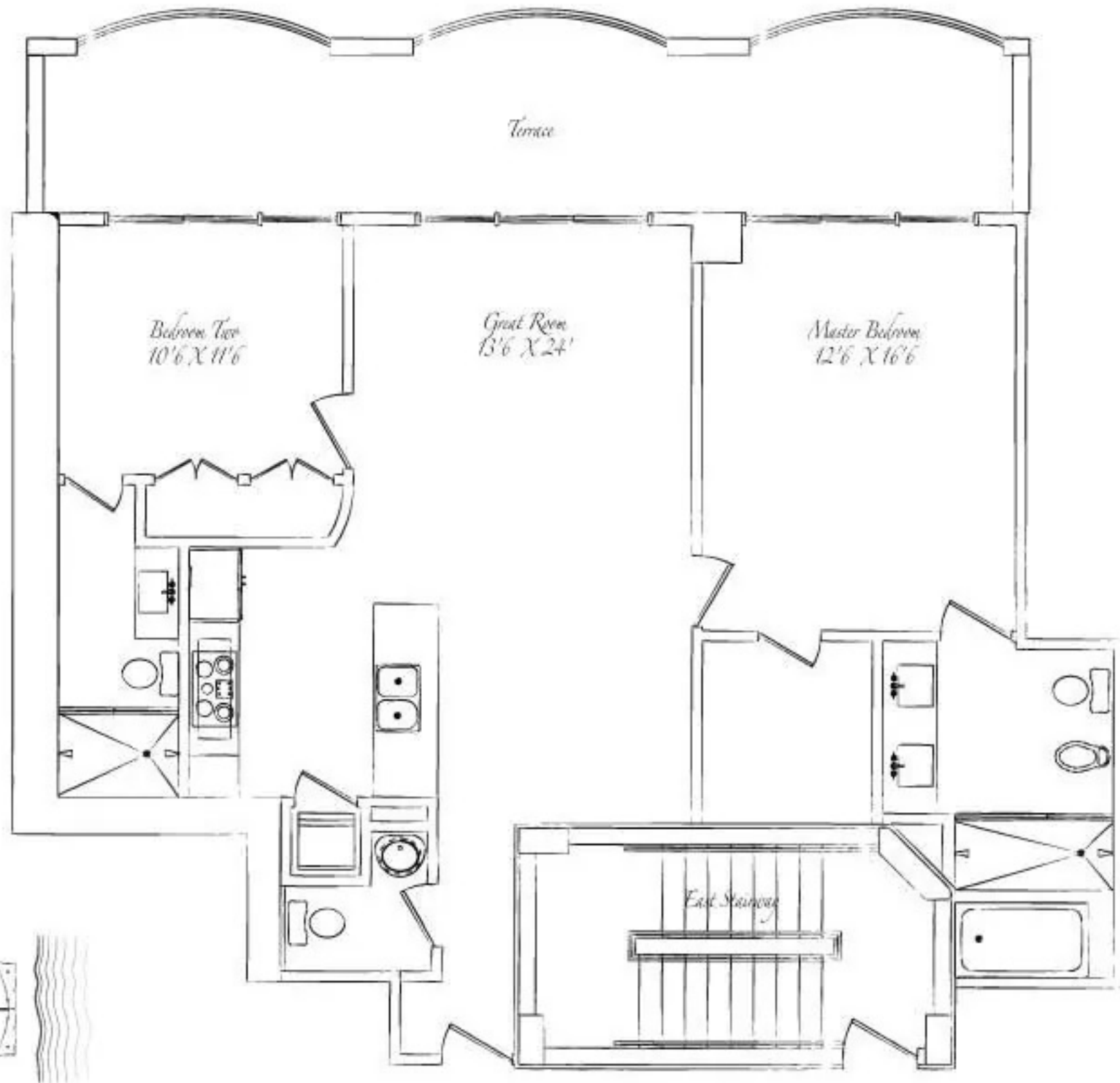


C

2 Bedroom - 2.5 Bath

Living Area:
1,158 sq.ft. (108m²)

Terrace Area:
from 288 sq.ft. (27m²)
to 379 sq.ft. (35m²)

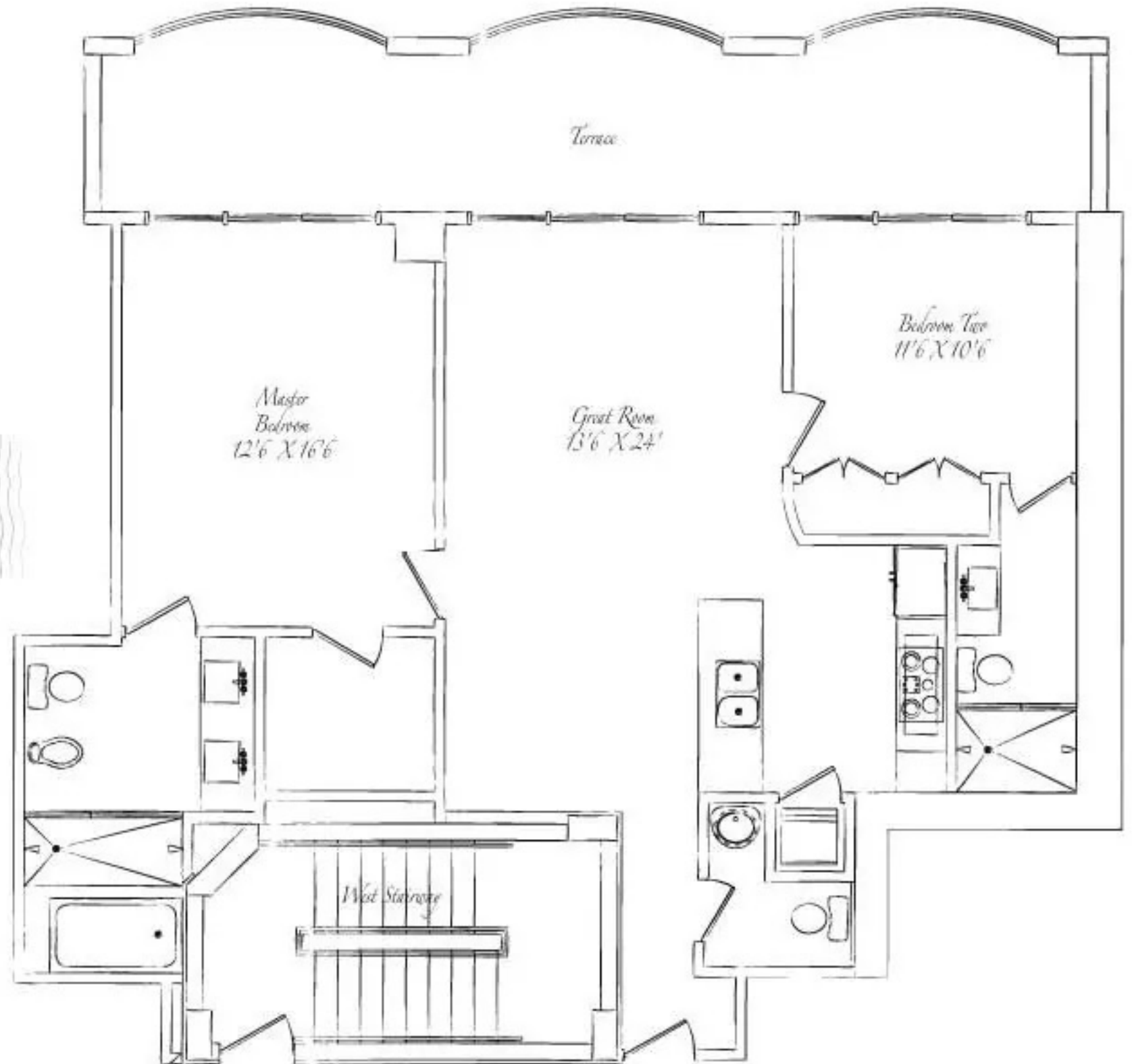
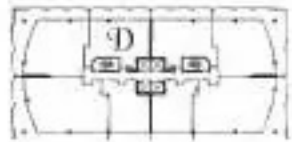


D

2 Bedroom - 2.5 Bath

Living Area:
1,154 sqft. (107m²)

Terrace Area:
from 288 sqft. (27m²)
to 379 sqft. (35m²)





2 Bedroom - 2.5 Bath

Living Area:
1,403 sq.ft. (130m²)

Terrace Area:
from 678 sq.ft. (63m²)
to 918 sq.ft. (85m²)

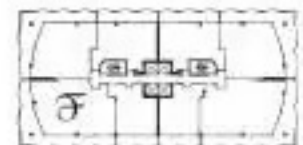
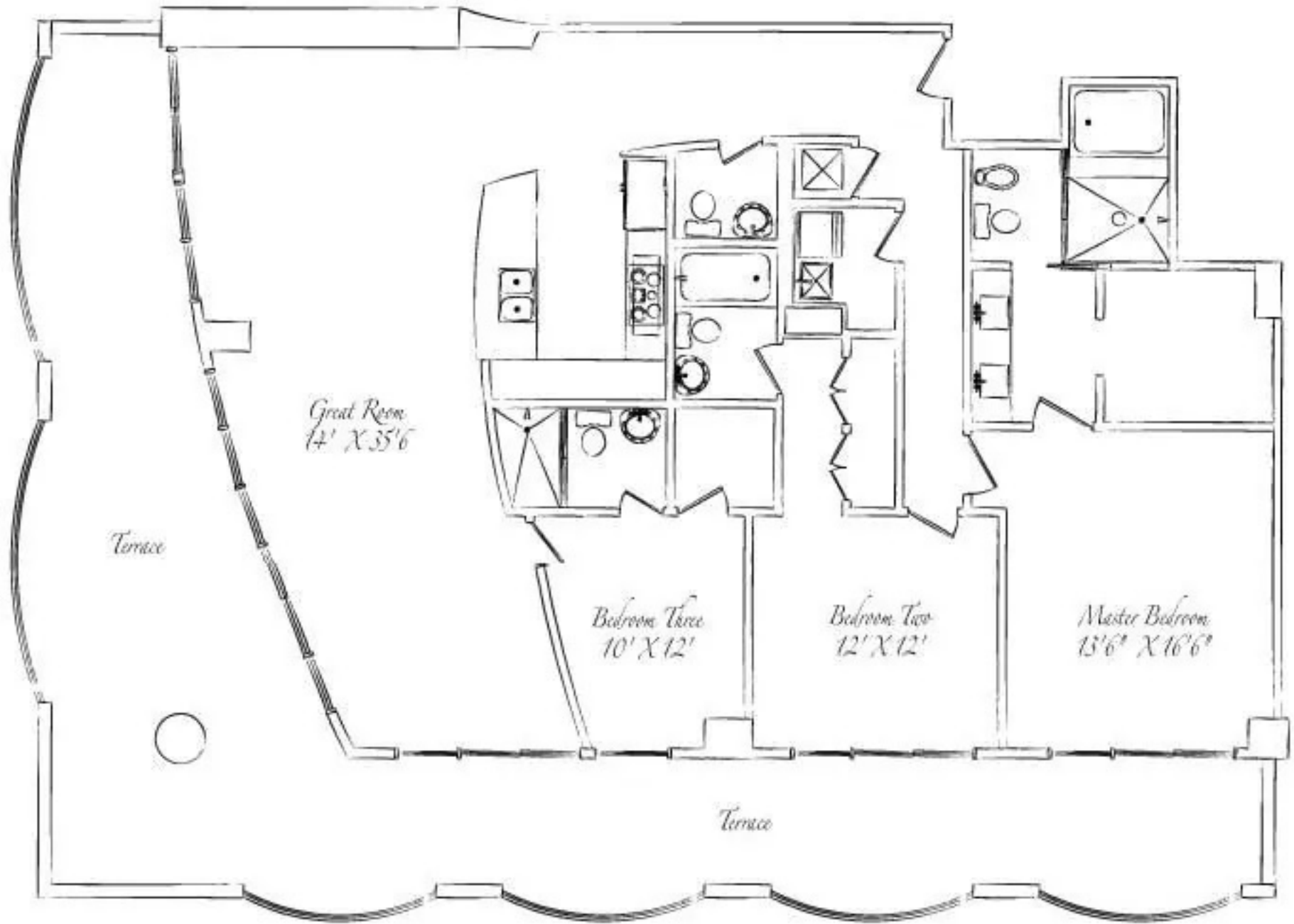




3 Bedroom - 3.5 Bath

Living Area:
1,833 sq.ft. (170m²)

Terrace Area:
from 776 sq.ft. (72m²)
to 1,047 sq.ft. (97m²)

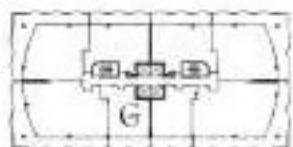
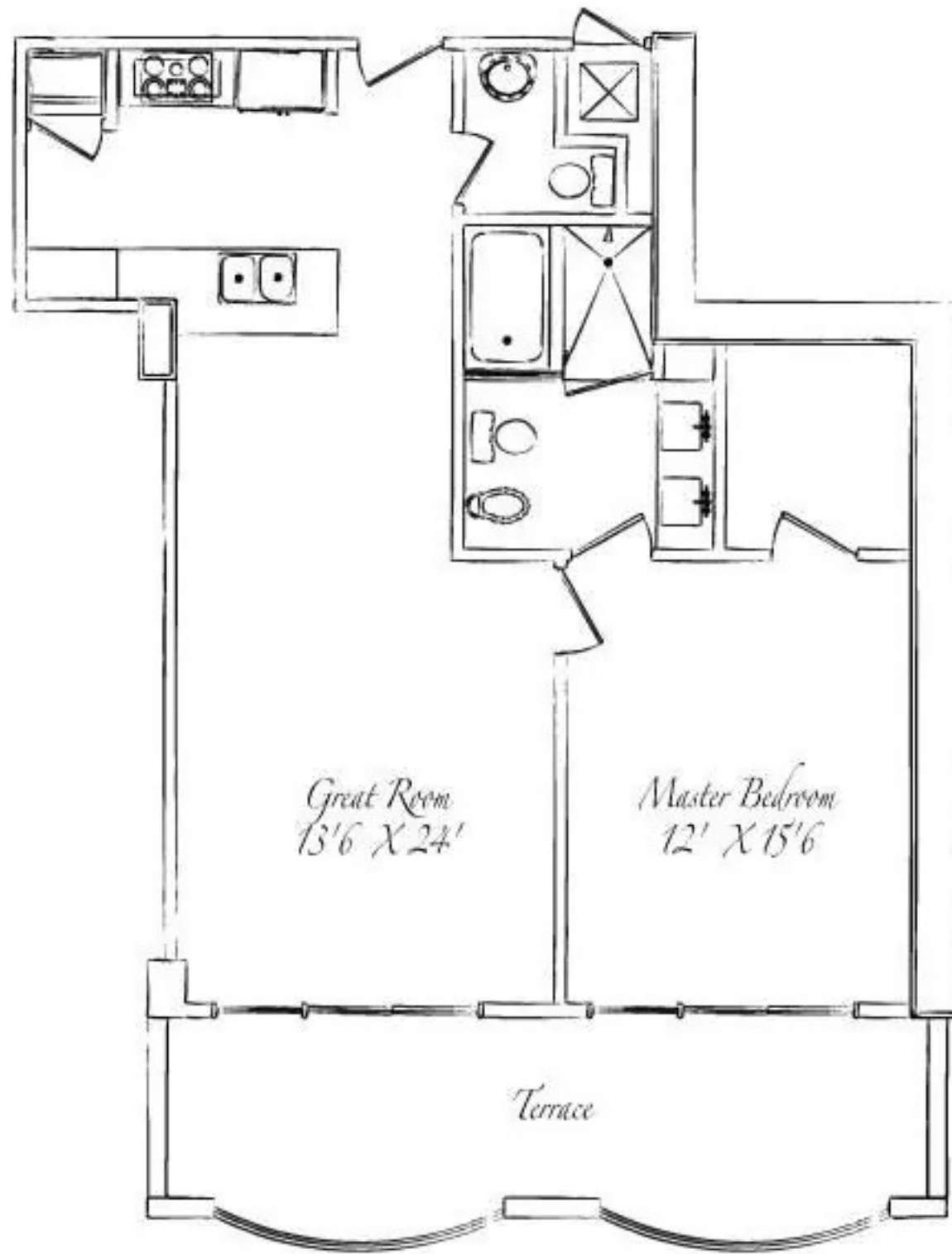


G

1 Bedroom - 1.5 Bath

Living Area:
874 sq.ft. (81m²)

Terrace Area:
from 192 sq.ft. (18m²)
to 252 sq.ft. (23m²)

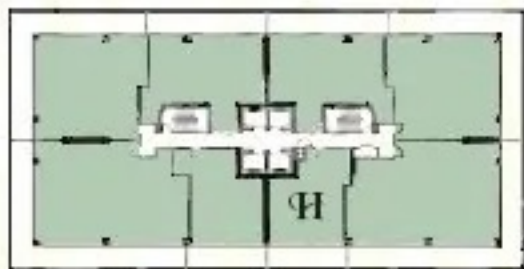
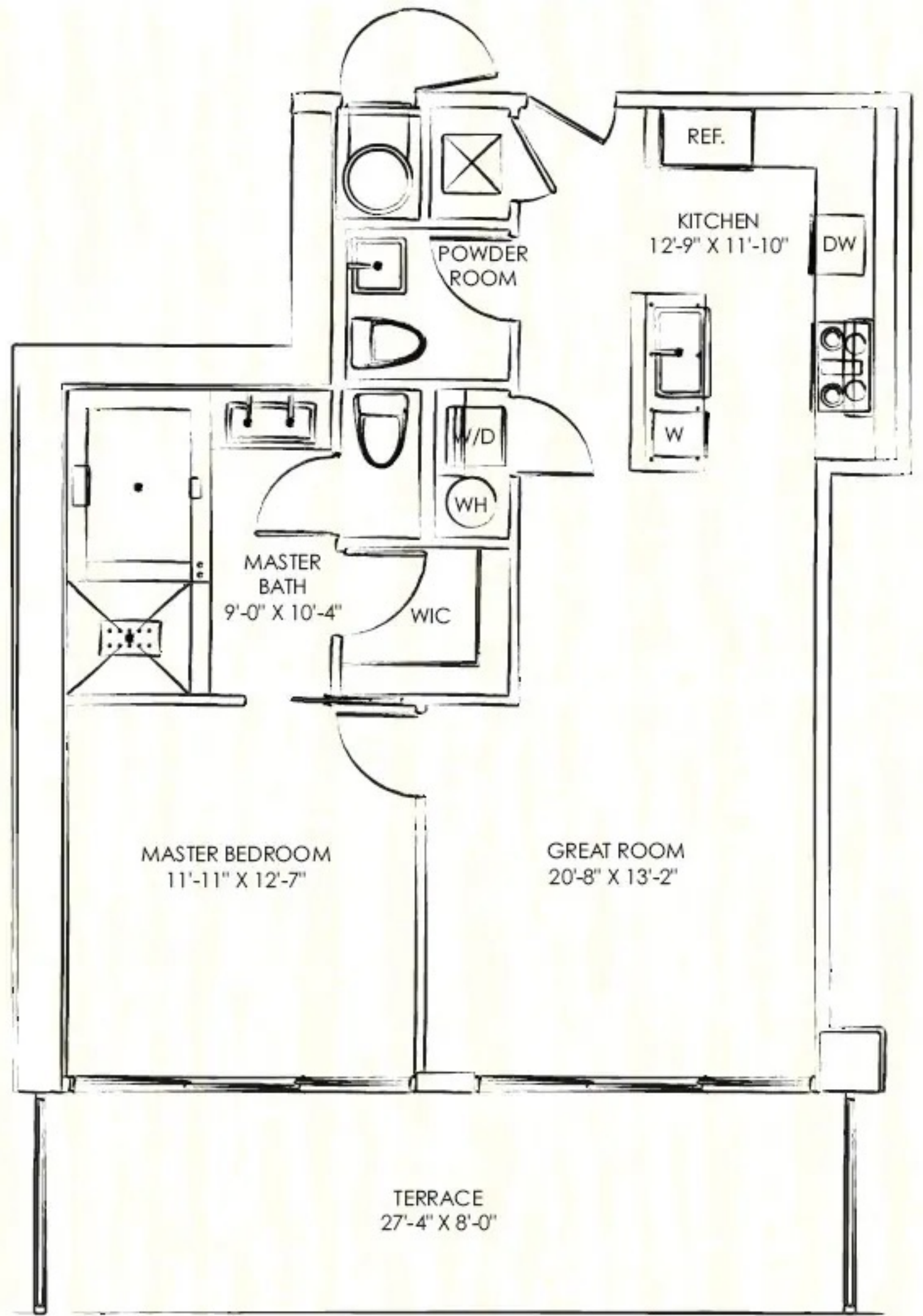




1 Bedroom | 1.5 Bath

Living Area:
820 sq. ft. (76m²)

Terrace Area:
219 sq. ft. (20m²)

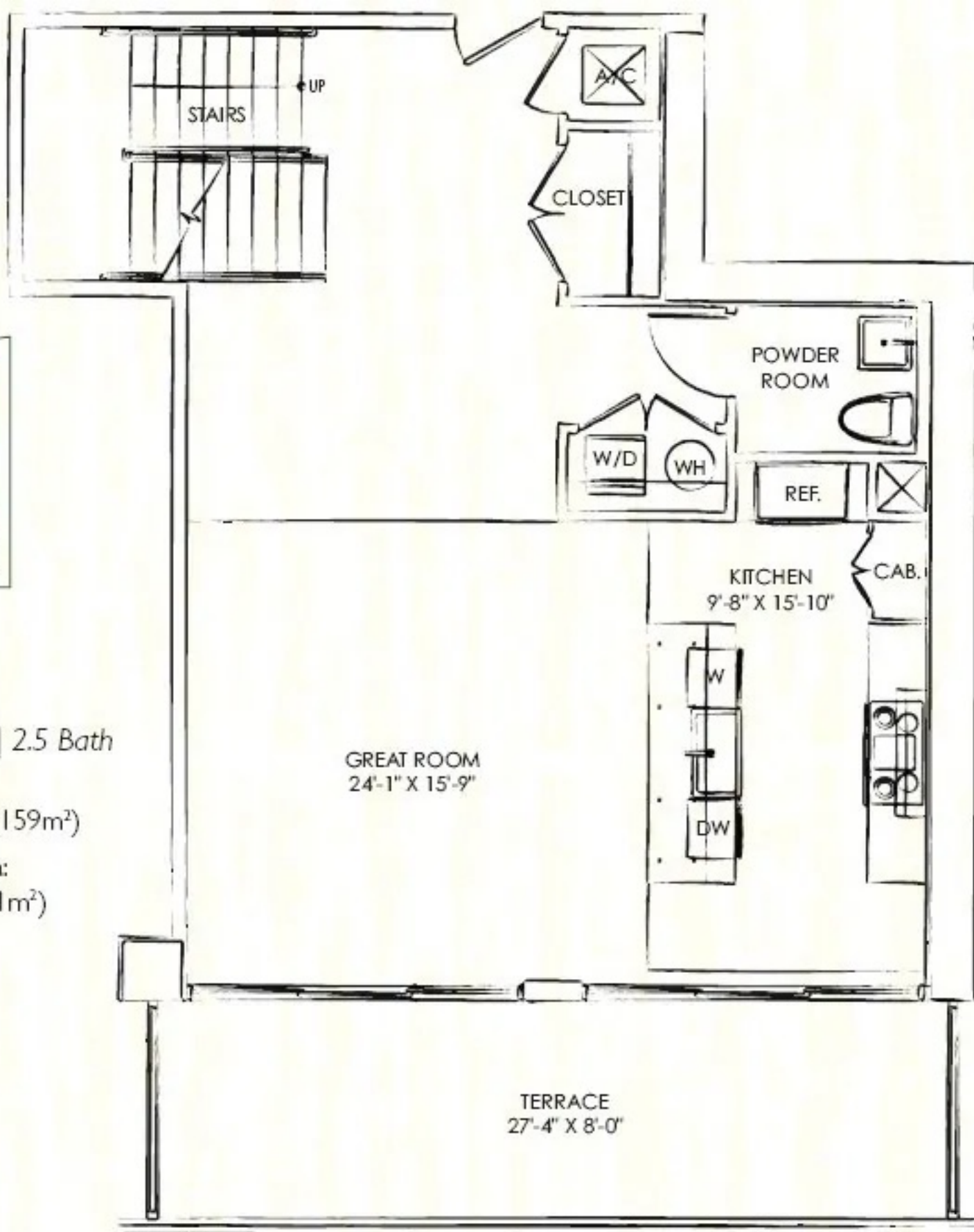




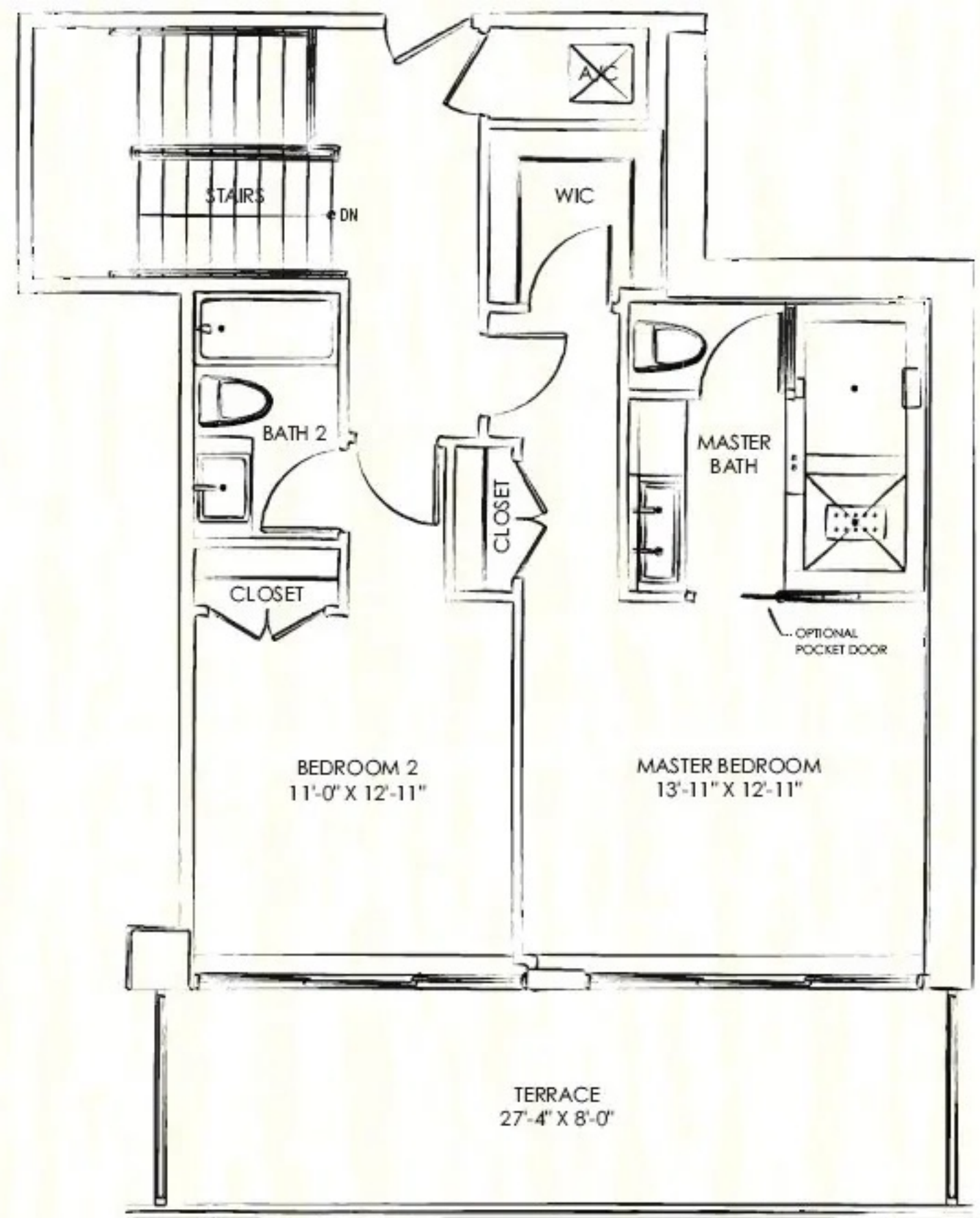
2 Bedroom | 2.5 Bath

Living Area:
1,707 sq. ft. (159m²)

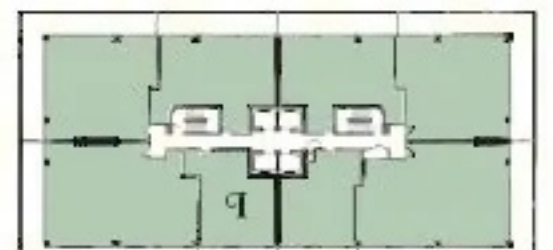
Terrace Area:
437 sq. ft. (41m²)



Lower Level



Upper Level





J

2 Bedroom | 2.5 Bath

Living Area:
1,640 sq. ft. (160m²)

Terrace Area:
437 sq. ft. (41m²)

