

Combo Floorplan

- Last oceanfront site in Miami Beach's Historic District
- Intimate building of only 80 planned condominium residences with maximum six homes per floor
- Four planned oceanfront 3-story townhomes with two-car garage
- All condominium residences are being designed as flow-through units with ocean views
- Four typical floor plans with two- and three-bedroom layouts
- Three spectacular four-bedroom oceanfront penthouses
- Private elevators
- Planned oceanside infinity pool, fitness, Social and Media Room, and Business Center with tropical landscaping
- Three miles from South Beach and 10 miles to Downtown Miami
- Presented to WCI, by the National Association of Home Builders "2004 America's Best Builder"



3-Bedrooms, 3 1/2-Baths and Grand Salon
Floors 12-19 and Penthouse 2

Under A/C:	2,749 Sq. Ft.	255.4 m ²
Terrace:	541 Sq. Ft.	50.2 m ²
Total:	3,290 Sq. Ft.	305.6 m ²



THE ABOVE DRAWINGS ARE CONCEPTUAL ONLY AND ARE SUBJECT TO CHANGE WITHOUT NOTICE AT THE DISCRETION OF THE DEVELOPER. THE DEVELOPER RESERVES THE RIGHT TO MAKE ADDITIONS, DELETIONS AND MODIFICATIONS TO THE DRAWINGS AS THE DEVELOPER MAY DEEM APPROPRIATE OR DESIRABLE. DIMENSIONS AND SQUARE FOOTAGES ARE APPROXIMATE AND MAY VARY WITH ACTUAL CONSTRUCTION.

ORAL REPRESENTATIONS CANNOT BE RELIED UPON AS CORRECTLY STATING REPRESENTATIONS OF THE DEVELOPER. FOR CORRECT REPRESENTATIONS MAKE REFERENCE TO THIS BROCHURE AND TO THE DOCUMENTS REQUIRED BY SECTION 718.503, FLORIDA STATUTES, TO BE FURNISHED BY A DEVELOPER TO A BUYER OR LESSEE.

Floorplan 1/6

- Last oceanfront site in Miami Beach's Historic District
- Intimate building of only 80 planned condominium residences with maximum six homes per floor
- Four planned oceanfront 3-story townhomes with two-car garage
- All condominium residences are being designed as flow-through units with ocean views
- Four typical floor plans with two- and three-bedroom layouts
- Three spectacular four-bedroom oceanfront penthouses
- Private elevators
- Planned oceanside infinity pool, fitness, Social and Media Room, and Business Center with tropical landscaping
- Three miles from South Beach and 10 miles to Downtown Miami
- Presented to WCI, by the National Association of Home Builders "2004 America's Best Builder"



3-Bedrooms, 3-Baths and Grand Salon

Under A/C:	2,005 Sq. Ft.	186 m ²
Terrace:	480 Sq. Ft.	44.5 m ²
Total:	2,485 Sq. Ft.	231 m ²



THE ABOVE DRAWINGS ARE CONCEPTUAL ONLY AND ARE SUBJECT TO CHANGE WITHOUT NOTICE AT THE DISCRETION OF THE DEVELOPER. THE DEVELOPER RESERVES THE RIGHT TO MAKE ADDITIONS, DELETIONS AND MODIFICATIONS TO THE DRAWINGS AS THE DEVELOPER MAY DEEM APPROPRIATE. OR, DESIRABLE. DIMENSIONS AND SQUARE FOOTAGES ARE APPROXIMATE AND MAY VARY WITH ACTUAL CONSTRUCTION.

ORAL REPRESENTATIONS CANNOT BE RELIED UPON AS CORRECTLY STATING REPRESENTATIONS OF THE DEVELOPER. FOR CORRECT REPRESENTATIONS MAKE REFERENCE TO THIS BROCHURE AND TO THE DOCUMENTS REQUIRED BY SECTION 718.503, FLORIDA STATUTES, TO BE FURNISHED BY A DEVELOPER TO A BUYER OR LESSEE.

Floorplan 1/6

- Last oceanfront site in Miami Beach's Historic District
- Intimate building of only 80 planned condominium residences with maximum six homes per floor
- Four planned oceanfront 3-story townhomes with two-car garage
- All condominium residences are being designed as flow-through units with ocean views
- Four typical floor plans with two- and three-bedroom layouts
- Three spectacular four-bedroom oceanfront penthouses
- Private elevators
- Planned oceanside infinity pool, fitness, Social and Media Room, and Business Center with tropical landscaping
- Three miles from South Beach and 10 miles to Downtown Miami
- Presented to WCI, by the National Association of Home Builders "2004 America's Best Builder"



3-Bedrooms, 3-Baths and Grand Salon

Under A/C:	2,005 Sq. Ft.	186 m ²
Terrace:	480 Sq. Ft.	44.5 m ²
Total:	2,485 Sq. Ft.	231 m ²



THE ABOVE DRAWINGS ARE CONCEPTUAL ONLY AND ARE SUBJECT TO CHANGE WITHOUT NOTICE AT THE DISCRETION OF THE DEVELOPER. THE DEVELOPER RESERVES THE RIGHT TO MAKE ADDITIONS, DELETIONS AND MODIFICATIONS TO THE DRAWINGS AS THE DEVELOPER MAY DEEM APPROPRIATE. OR, DESIRABLE. DIMENSIONS AND SQUARE FOOTAGES ARE APPROXIMATE AND MAY VARY WITH ACTUAL CONSTRUCTION.

ORAL REPRESENTATIONS CANNOT BE RELIED UPON AS CORRECTLY STATING REPRESENTATIONS OF THE DEVELOPER. FOR CORRECT REPRESENTATIONS MAKE REFERENCE TO THIS BROCHURE AND TO THE DOCUMENTS REQUIRED BY SECTION 718.503, FLORIDA STATUTES, TO BE FURNISHED BY A DEVELOPER TO A BUYER OR LESSEE.

Floorplan 2/5

- Last oceanfront site in Miami Beach's Historic District
- Intimate building of only 80 planned condominium residences with maximum six homes per floor
- Four planned oceanfront 3-story townhomes with two-car garage
- All condominium residences are being designed as flow-through units with ocean views
- Four typical floor plans with two- and three-bedroom layouts
- Three spectacular four-bedroom oceanfront penthouses
- Private elevators
- Planned oceanside infinity pool, fitness, Social and Media Room, and Business Center with tropical landscaping
- Three miles from South Beach and 10 miles to Downtown Miami
- Presented to WCI, by the National Association of Home Builders "2004 America's Best Builder"



3-Bedrooms, 3-Baths and Grand Salon

Under A/C:	1,661 Sq. Ft.	154 m ²
Terrace:	313 Sq. Ft.	29 m ²
Total:	1,974 Sq. Ft.	183 m ²



THE ABOVE DRAWINGS ARE CONCEPTUAL ONLY AND ARE SUBJECT TO CHANGE WITHOUT NOTICE AT THE DISCRETION OF THE DEVELOPER. THE DEVELOPER RESERVES THE RIGHT TO MAKE ADDITIONS, DELETIONS AND MODIFICATIONS TO THE DRAWINGS AS THE DEVELOPER MAY DEEM APPROPRIATE. OR DESIRABLE. DIMENSIONS AND SQUARE FOOTAGES ARE APPROXIMATE AND MAY VARY WITH ACTUAL CONSTRUCTION.

ORAL REPRESENTATIONS CANNOT BE RELIED UPON AS CORRECTLY STATING REPRESENTATIONS OF THE DEVELOPER. FOR CORRECT REPRESENTATIONS MAKE REFERENCE TO THIS BROCHURE AND TO THE DOCUMENTS REQUIRED BY SECTION 718.503, FLORIDA STATUTES, TO BE FURNISHED BY A DEVELOPER TO A BUYER OR LESSEE.

Floorplan 2/5

- Last oceanfront site in Miami Beach's Historic District
- Intimate building of only 80 planned condominium residences with maximum six homes per floor
- Four planned oceanfront 3-story townhomes with two-car garage
- All condominium residences are being designed as flow-through units with ocean views
- Four typical floor plans with two- and three-bedroom layouts
- Three spectacular four-bedroom oceanfront penthouses
- Private elevators
- Planned oceanside infinity pool, fitness, Social and Media Room, and Business Center with tropical landscaping
- Three miles from South Beach and 10 miles to Downtown Miami
- Presented to WCI, by the National Association of Home Builders "2004 America's Best Builder"



3-Bedrooms, 3-Baths and Grand Salon

Under A/C:	1,661 Sq. Ft.	154 m ²
Terrace:	313 Sq. Ft.	29 m ²
Total:	1,974 Sq. Ft.	183 m ²



THE ABOVE DRAWINGS ARE CONCEPTUAL ONLY AND ARE SUBJECT TO CHANGE WITHOUT NOTICE AT THE DISCRETION OF THE DEVELOPER. THE DEVELOPER RESERVES THE RIGHT TO MAKE ADDITIONS, DELETIONS AND MODIFICATIONS TO THE DRAWINGS AS THE DEVELOPER MAY DEEM APPROPRIATE. OR DESIRABLE. DIMENSIONS AND SQUARE FOOTAGES ARE APPROXIMATE AND MAY VARY WITH ACTUAL CONSTRUCTION.

ORAL REPRESENTATIONS CANNOT BE RELIED UPON AS CORRECTLY STATING REPRESENTATIONS OF THE DEVELOPER. FOR CORRECT REPRESENTATIONS MAKE REFERENCE TO THIS BROCHURE AND TO THE DOCUMENTS REQUIRED BY SECTION 718.503, FLORIDA STATUTES, TO BE FURNISHED BY A DEVELOPER TO A BUYER OR LESSEE.

Floorplan 3

- Last oceanfront site in Miami Beach's Historic District
- Intimate building of only 80 planned condominium residences with maximum six homes per floor
- Four planned oceanfront 3-story townhomes with two-car garage
- All condominium residences are being designed as flow-through units with ocean views
- Four typical floor plans with two- and three-bedroom layouts
- Three spectacular four-bedroom oceanfront penthouses
- Private elevators
- Planned oceanside infinity pool, fitness, Social and Media Room, and Business Center with tropical landscaping
- Three miles from South Beach and 10 miles to Downtown Miami
- Presented to WCI, by the National Association of Home Builders "2004 America's Best Builder"



2-Bedrooms, 2-Baths and Grand Salon
Floors 5-11

Under A/C:	1,410 Sq. Ft.	131 m ²
Terrace:	278 Sq. Ft.	25.8 m ²
Total:	1,688 Sq. Ft.	156.8 m ²

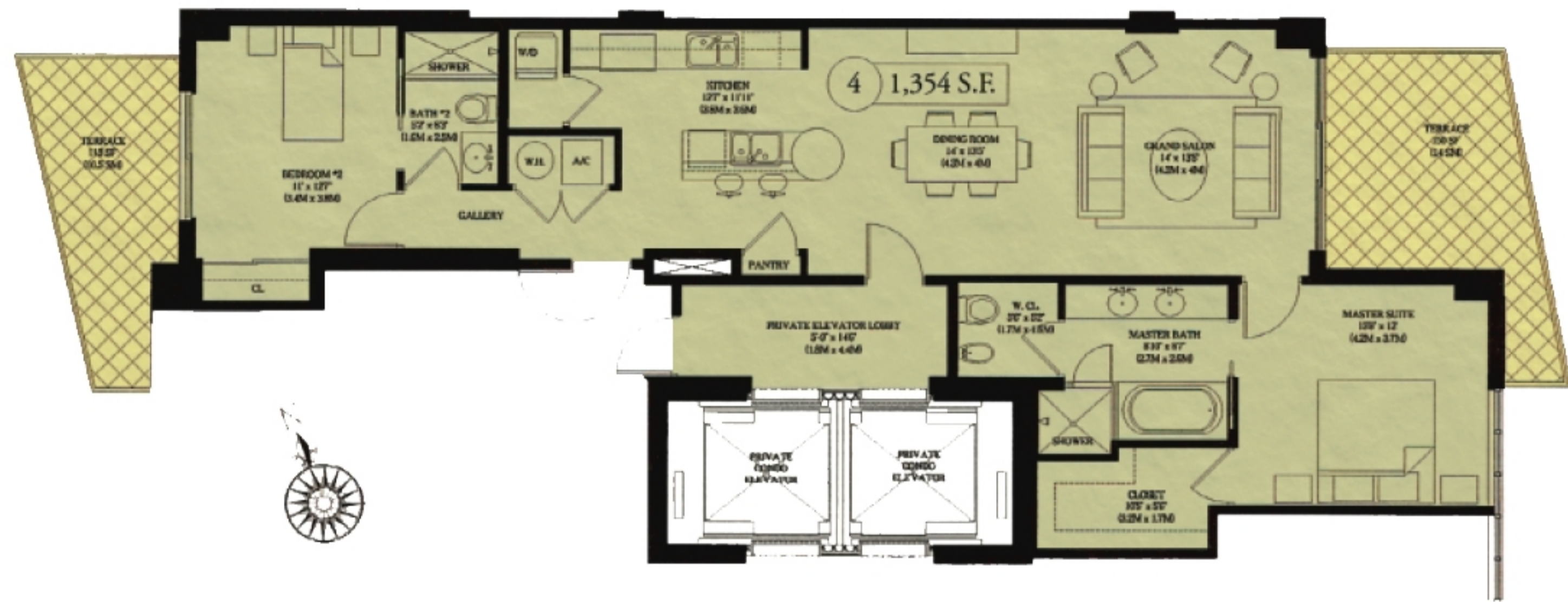


THE ABOVE DRAWINGS ARE CONCEPTUAL ONLY AND ARE SUBJECT TO CHANGE WITHOUT NOTICE AT THE DISCRETION OF THE DEVELOPER. THE DEVELOPER RESERVES THE RIGHT TO MAKE ADDITIONS, DELETIONS AND MODIFICATIONS TO THE DRAWINGS AS THE DEVELOPER MAY DEEM APPROPRIATE OR DESIRABLE. DIMENSIONS AND SQUARE FOOTAGES ARE APPROXIMATE AND MAY VARY WITH ACTUAL CONSTRUCTION.

ORAL REPRESENTATIONS CANNOT BE RELIED UPON AS CORRECTLY STATING REPRESENTATIONS OF THE DEVELOPER. FOR CORRECT REPRESENTATIONS MAKE REFERENCE TO THIS BROCHURE AND TO THE DOCUMENTS REQUIRED BY SECTION 718.503, FLORIDA STATUTES, TO BE FURNISHED BY A DEVELOPER TO A BUYER OR LESSEE.

Floorplan 4

- Last oceanfront site in Miami Beach's Historic District
- Intimate building of only 80 planned condominium residences with maximum six homes per floor
- Four planned oceanfront 3-story townhomes with two-car garage
- All condominium residences are being designed as flow-through units with ocean views
- Four typical floor plans with two- and three-bedroom layouts
- Three spectacular four-bedroom oceanfront penthouses
- Private elevators
- Planned oceanside infinity pool, fitness, Social and Media Room, and Business Center with tropical landscaping
- Three miles from South Beach and 10 miles to Downtown Miami
- Presented to WCI, by the National Association of Home Builders "2004 America's Best Builder"



2-Bedrooms, 2-Baths and Grand Salon
Floors 5-11

Under A/C:	1,354 Sq. Ft.	125.8 m ²
Terrace:	263 Sq. Ft.	24.4 m ²
Total:	1,617 Sq. Ft.	105.2 m ²



THE ABOVE DRAWINGS ARE CONCEPTUAL ONLY AND ARE SUBJECT TO CHANGE WITHOUT NOTICE AT THE DISCRETION OF THE DEVELOPER. THE DEVELOPER RESERVES THE RIGHT TO MAKE ADDITIONS, DELETIONS AND MODIFICATIONS TO THE DRAWINGS AS THE DEVELOPER MAY DEEM APPROPRIATE. OR DESIRABLE. DIMENSIONS AND SQUARE FOOTAGES ARE APPROXIMATE AND MAY VARY WITH ACTUAL CONSTRUCTION.

ORAL REPRESENTATIONS CANNOT BE RELIED UPON AS CORRECTLY STATING REPRESENTATIONS OF THE DEVELOPER. FOR CORRECT REPRESENTATIONS MAKE REFERENCE TO THIS BROCHURE AND TO THE DOCUMENTS REQUIRED BY SECTION 718.503, FLORIDA STATUTES, TO BE FURNISHED BY A DEVELOPER TO A BUYER OR LESSEE.