

PALAU

SUNSET HARBOUR

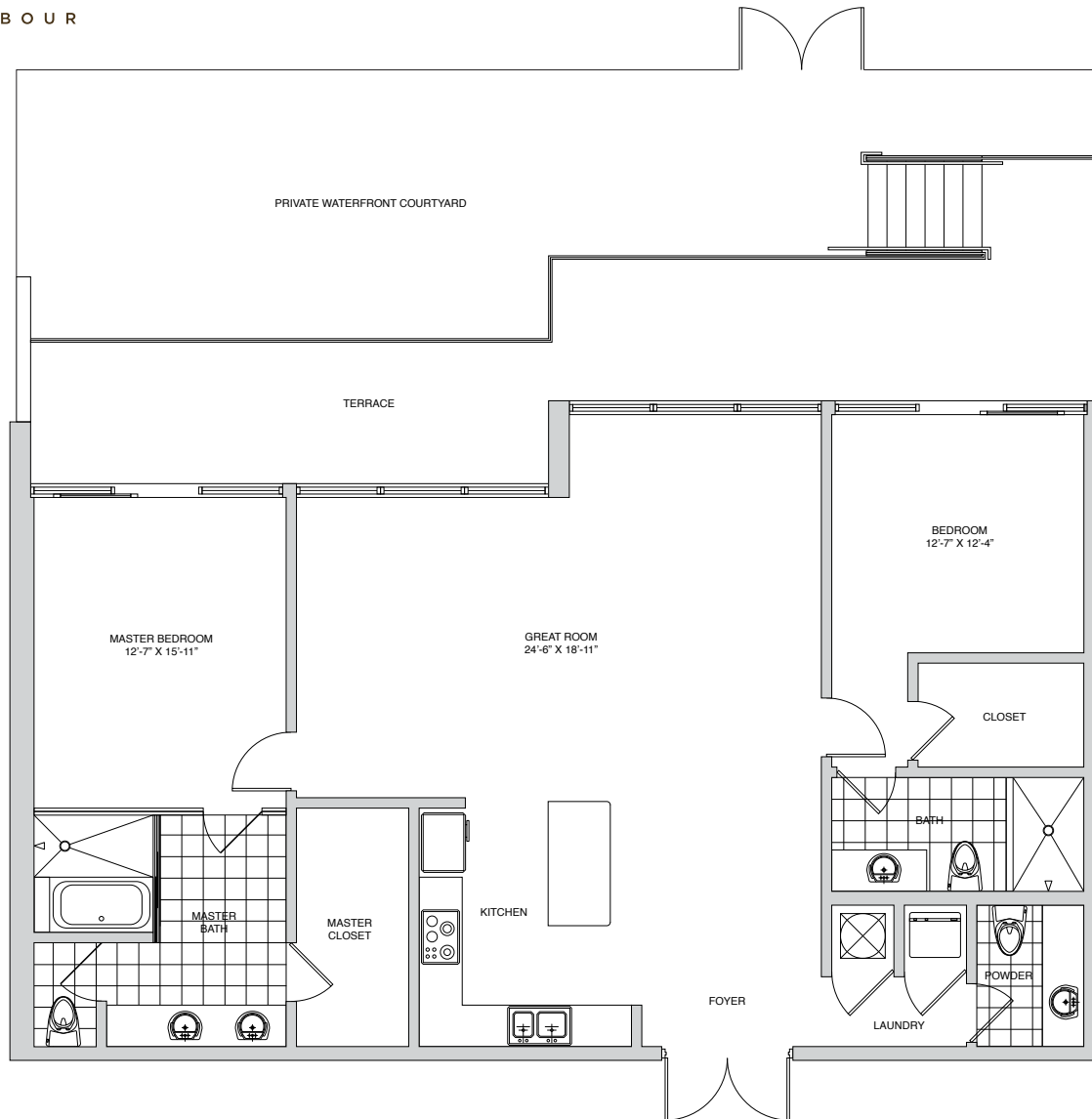
FLOORPLANS

PALAU

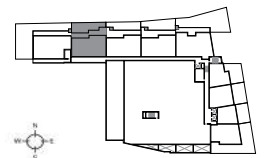
SUNSET HARBOUR

RESIDENCE 202G

TYPE G	2 BEDROOM, 2.5 BATH
INTERIOR	1,595 SQ FT / 148 M ²
TERRACE	420 SQ FT / 39 M ²
GARDEN	545 SQ FT / 51 M ²
TOTAL	2,560 SQ FT / 238 M ²



All plans, elevations, specifications, unit orientation, and designs, are subject to change or substitution without notice by Developer, and should not be relied upon as representations, express or implied, of the final details of the units. Stated dimensions are measured to the exterior face of exterior walls, to the midpoint of demising walls and to the exterior face of walls adjoining corridors or other common elements. All dimensions are approximate and may vary with actual construction, and all floor plans and development plans are subject to change. The floor plan and square footage referenced herein are believed to be true and accurate, but are not guaranteed or warranted and may be revised, amended, or changed without notice.

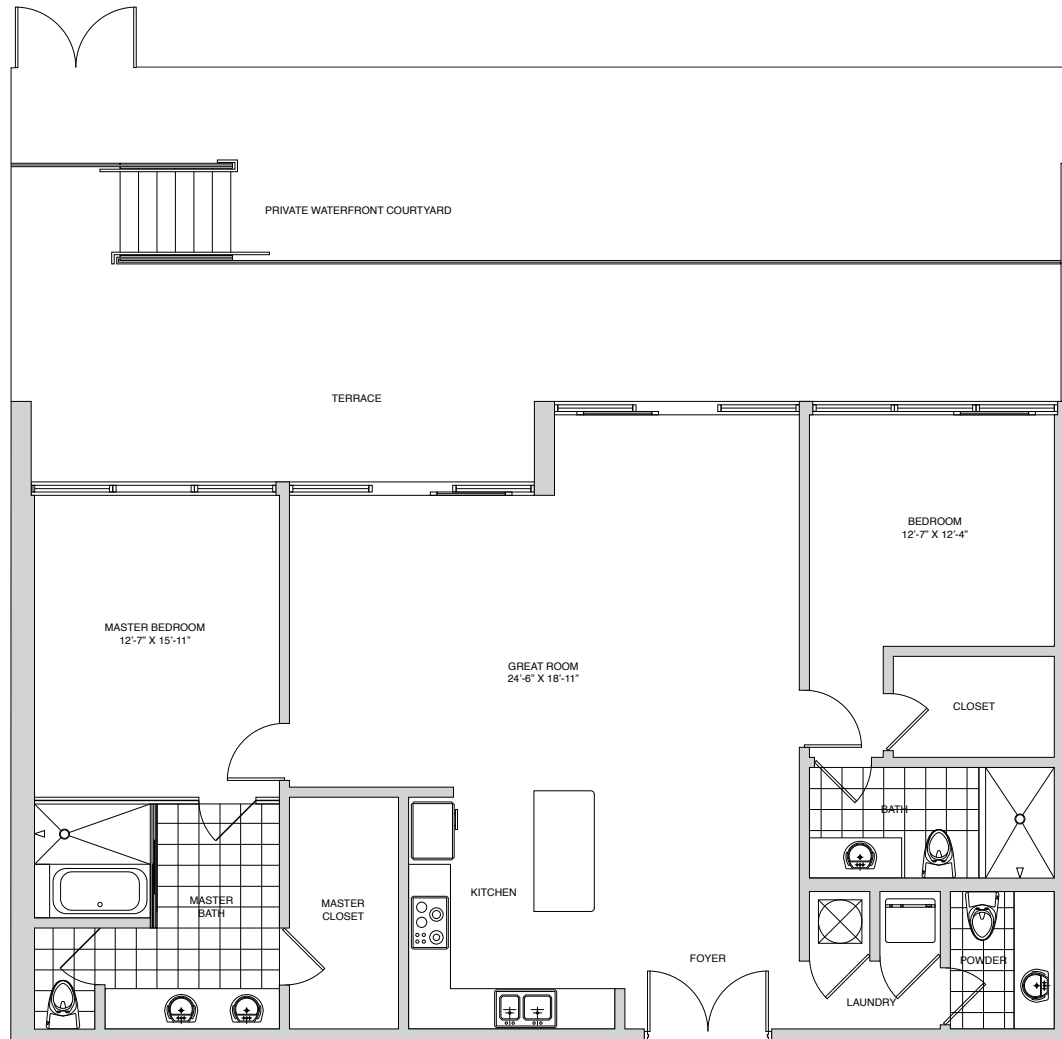



PALAU

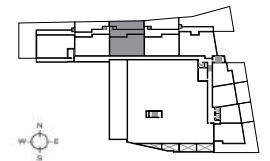
SUNSET HARBOUR

RESIDENCE 203G

TYPE G	2 BEDROOM, 2.5 BATH
INTERIOR	1,595 SQ FT / 148 M ²
TERRACE	521 SQ FT / 48 M ²
GARDEN	488 SQ FT / 45 M ²
TOTAL	2,604 SQ FT / 241 M ²



 All plans, elevations, specifications, unit orientation, and designs, are subject to change or substitution without notice by Developer, and should not be relied upon as representations, express or implied, of the final details of the units. Stated dimensions are measured to the exterior face of exterior walls, to the midpoint of demising walls and to the exterior face of walls adjoining corridors or other common elements. All dimensions are approximate and may vary with actual construction, and all floor plans and development plans are subject to change. The floor plan and square footage referenced herein are believed to be true and accurate, but are not guaranteed or warranted and may be revised, amended, or changed without notice.

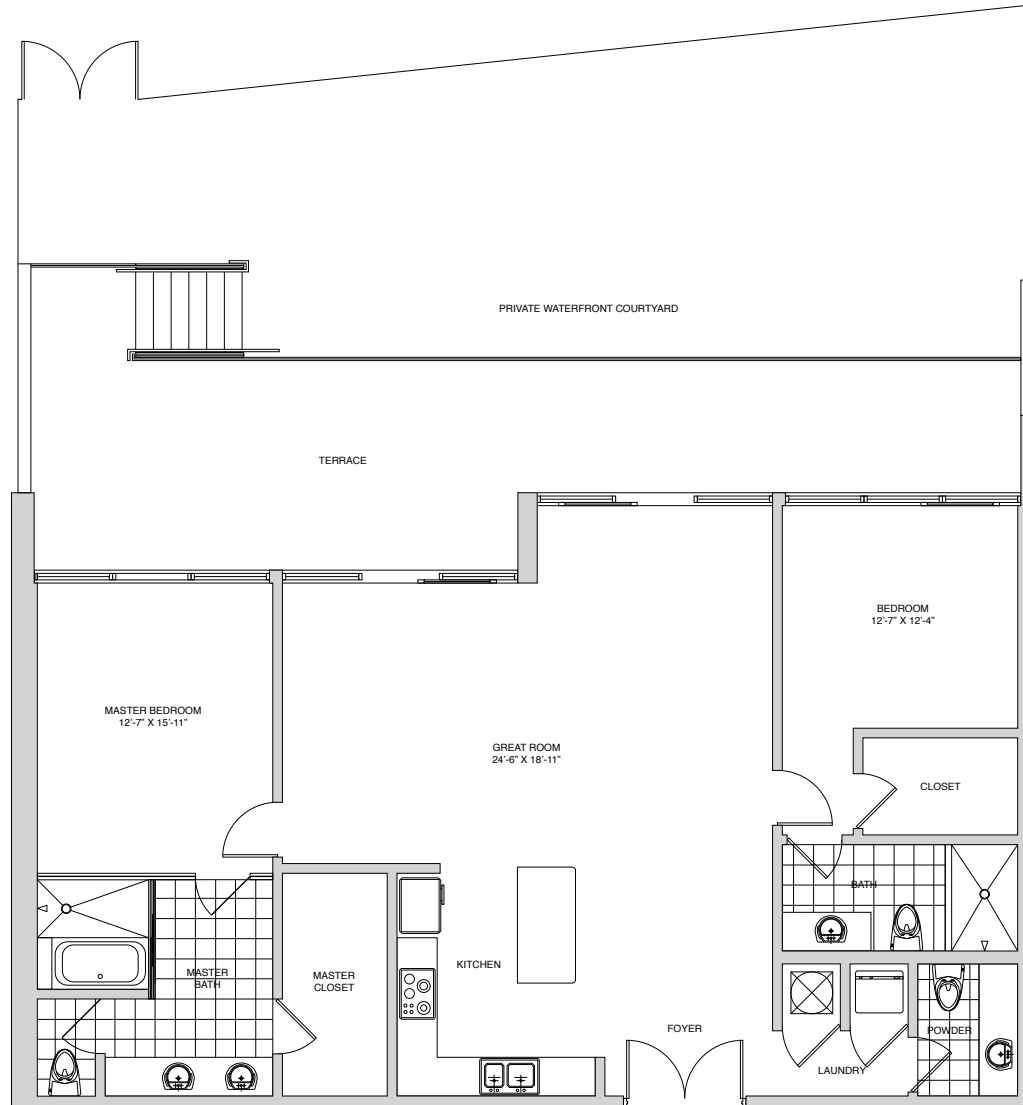


PALAU

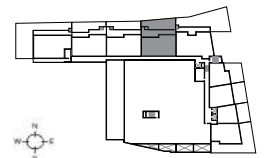
SUNSET HARBOUR

RESIDENCE 204G

TYPE G	2 BEDROOM, 2.5 BATH
INTERIOR	1,595 SQ FT / 148 M ²
TERRACE	513 SQ FT / 48 M ²
GARDEN	623 SQ FT / 58 M ²
TOTAL	2,731 SQ FT / 254 M ²



All plans, elevations, specifications, unit orientation, and designs, are subject to change or substitution without notice by Developer, and should not be relied upon as representations, express or implied, of the final details of the units. Stated dimensions are measured to the exterior face of exterior walls, to the midpoint of demising walls and to the exterior face of walls adjoining corridors or other common elements. All dimensions are approximate and may vary with actual construction, and all floor plans and development plans are subject to change. The floor plan and square footage referenced herein are believed to be true and accurate, but are not guaranteed or warranted and may be revised, amended, or changed without notice.

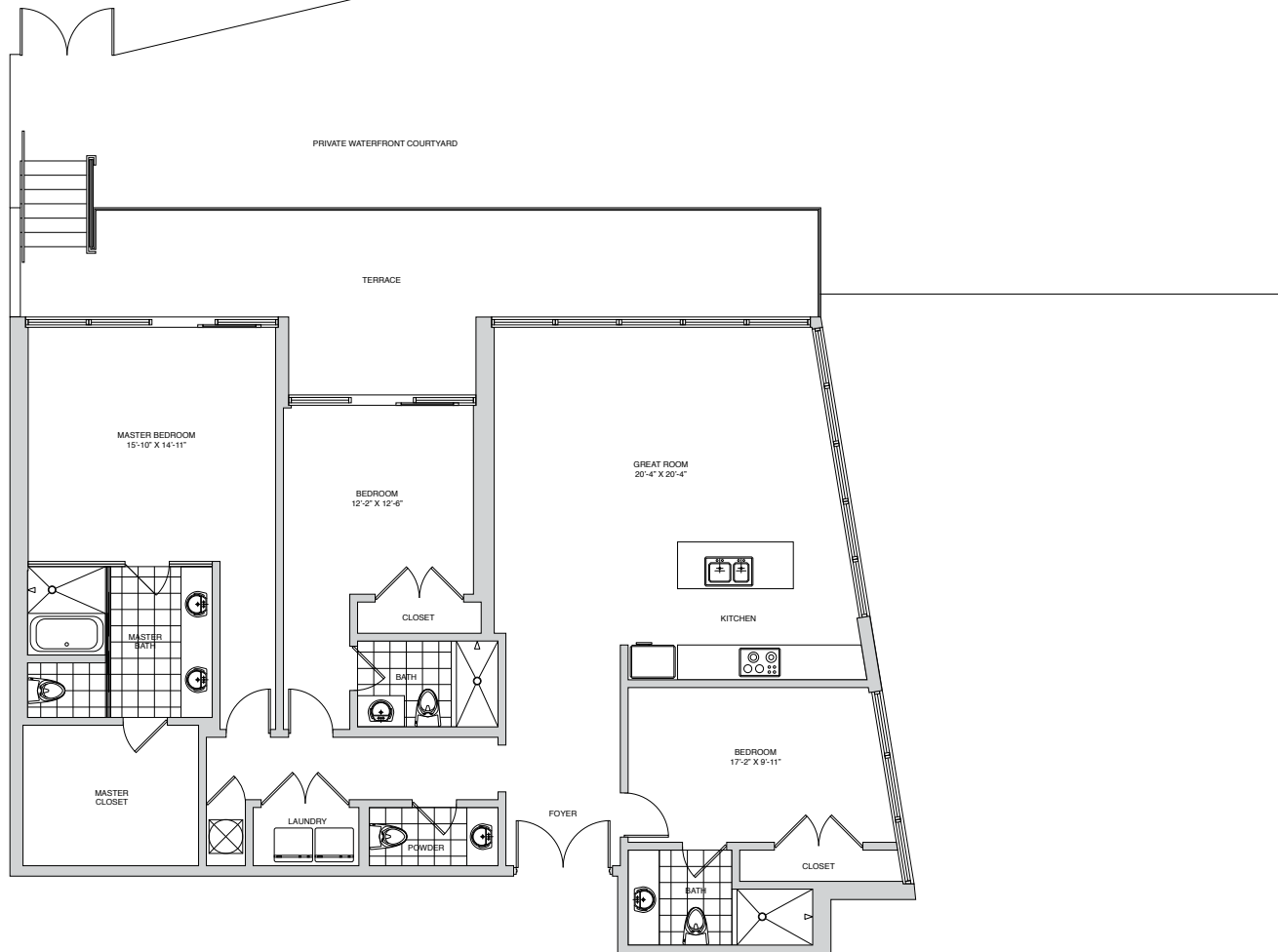



PALAU

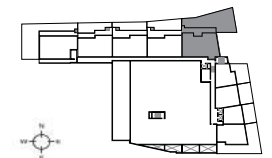
SUNSET HARBOUR

RESIDENCE 205E

TYPE E	3 BEDROOM, 3.5 BATH
INTERIOR	1,995 SQ FT / 185 M ²
TERRACE	440 SQ FT / 41 M ²
GARDEN	1,511 SQ FT / 140 M ²
TOTAL	3,946 SQ FT / 366 M ²



 All plans, elevations, specifications, unit orientation, and designs, are subject to change or substitution without notice by Developer, and should not be relied upon as representations, express or implied, of the final details of the units. Stated dimensions are measured to the exterior face of exterior walls, to the midpoint of demising walls and to the exterior face of walls adjoining corridors or other common elements. All dimensions are approximate and may vary with actual construction, and all floor plans and development plans are subject to change. The floor plan and square footage referenced herein are believed to be true and accurate, but are not guaranteed or warranted and may be revised, amended, or changed without notice.

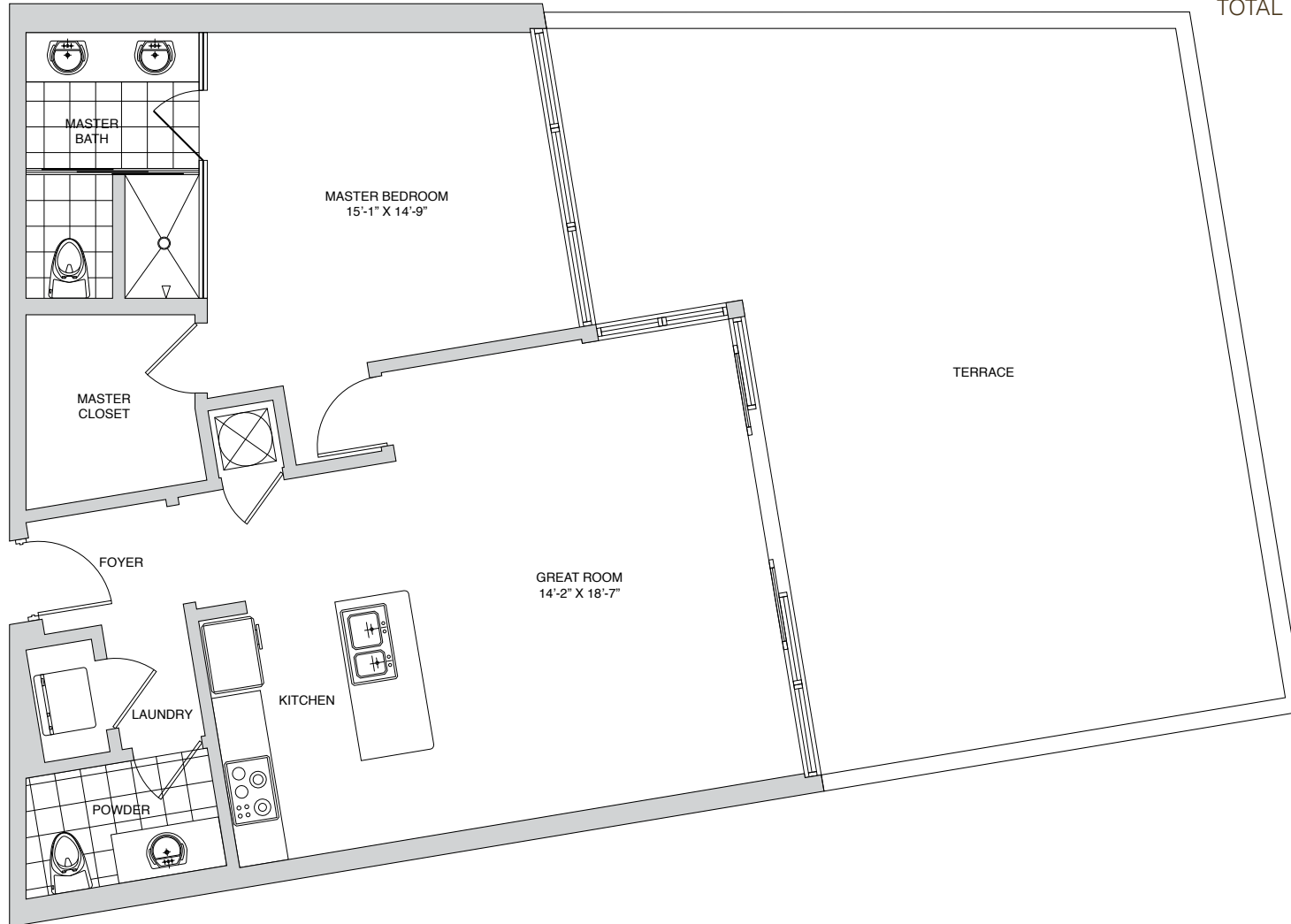


PALAU

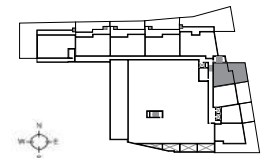
SUNSET HARBOUR

RESIDENCE 206H

TYPE H	1 BEDROOM, 1.5 BATH
INTERIOR	949 SQ FT / 88 M ²
TERRACE	773 SQ FT / 72 M ²
TOTAL	1,722 SQ FT / 160 M ²



All plans, elevations, specifications, unit orientation, and designs, are subject to change or substitution without notice by Developer, and should not be relied upon as representations, express or implied, of the final details of the units. Stated dimensions are measured to the exterior face of exterior walls, to the midpoint of demising walls and to the exterior face of walls adjoining corridors or other common elements. All dimensions are approximate and may vary with actual construction, and all floor plans and development plans are subject to change. The floor plan and square footage referenced herein are believed to be true and accurate, but are not guaranteed or warranted and may be revised, amended, or changed without notice.



PALAU

SUNSET HARBOUR

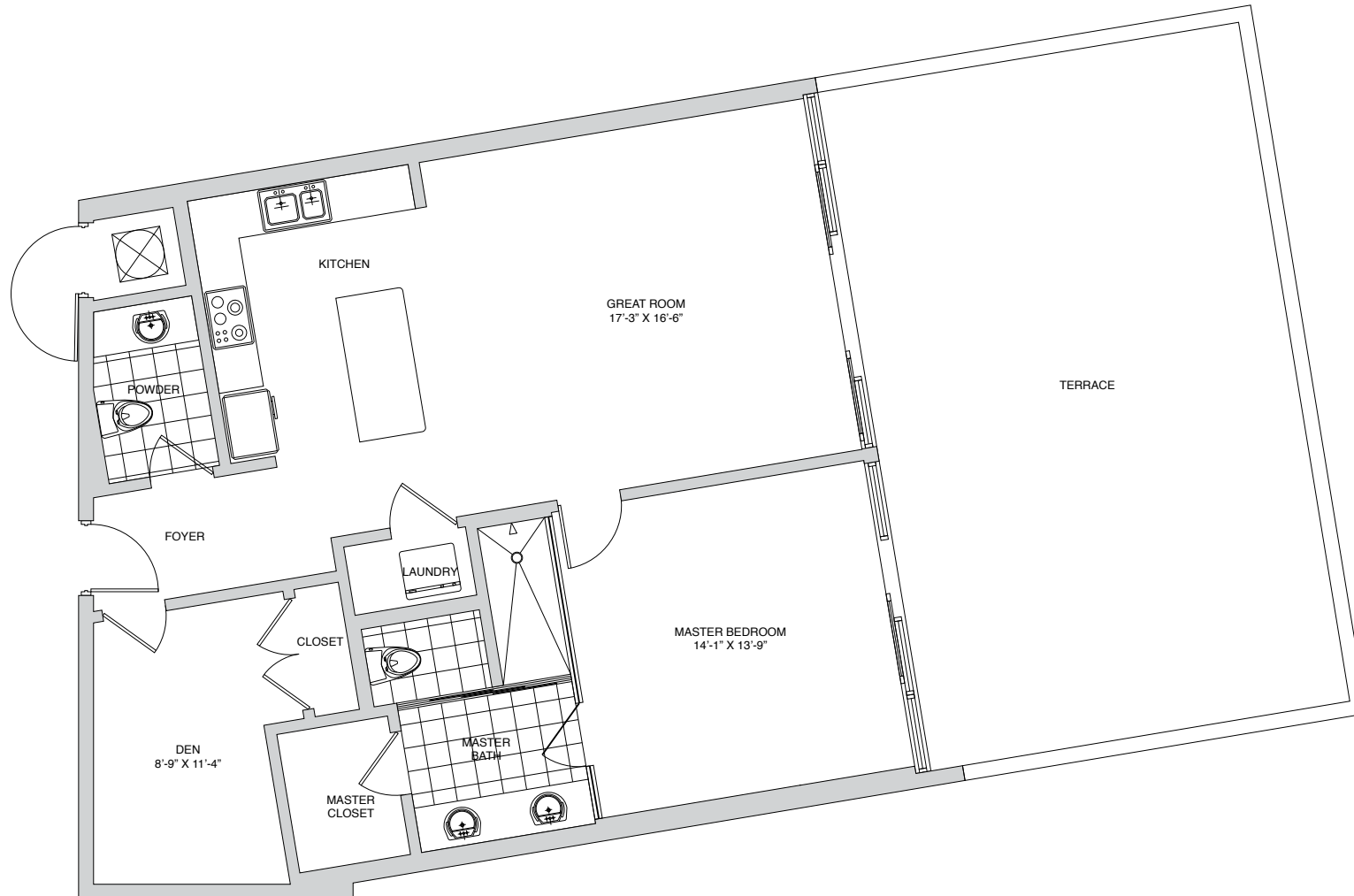
RESIDENCE 2071


TYPE I 1 BEDROOM + DEN, 1.5 BATH

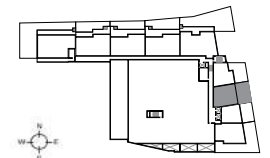
INTERIOR 1,110 SQ FT / 103 M²

TERRACE 615 SQ FT / 57 M²

TOTAL 1,725 SQ FT / 160 M²



 All plans, elevations, specifications, unit orientation, and designs, are subject to change or substitution without notice by Developer, and should not be relied upon as representations, express or implied, of the final details of the units. Stated dimensions are measured to the exterior face of exterior walls, to the midpoint of demising walls and to the exterior face of walls adjoining corridors or other common elements. All dimensions are approximate and may vary with actual construction, and all floor plans and development plans are subject to change. The floor plan and square footage referenced herein are believed to be true and accurate, but are not guaranteed or warranted and may be revised, amended, or changed without notice.

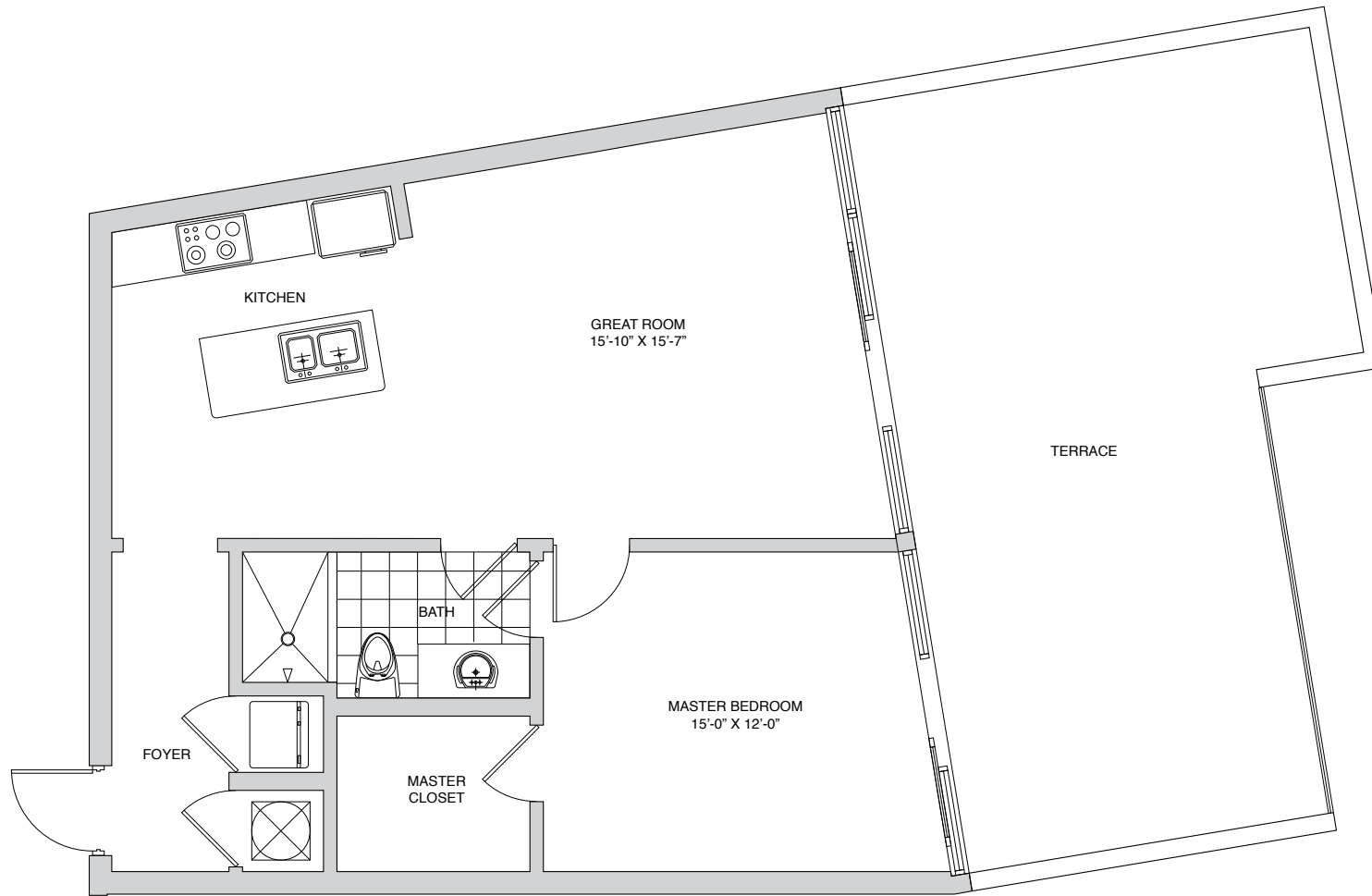



PALAU

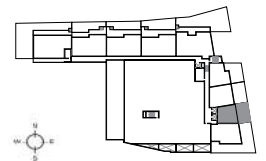
SUNSET HARBOUR

RESIDENCE 208D

TYPE D	1 BEDROOM, 1 BATH
INTERIOR	825 SQ FT / 77 M ²
TERRACE	543 SQ FT / 50 M ²
TOTAL	1,368 SQ FT / 127 M ²



 All plans, elevations, specifications, unit orientation, and designs, are subject to change or substitution without notice by Developer, and should not be relied upon as representations, express or implied, of the final details of the units. Stated dimensions are measured to the exterior face of exterior walls, to the midpoint of demising walls and to the exterior face of walls adjoining corridors or other common elements. All dimensions are approximate and may vary with actual construction, and all floor plans and development plans are subject to change. The floor plan and square footage referenced herein are believed to be true and accurate, but are not guaranteed or warranted and may be revised, amended, or changed without notice.

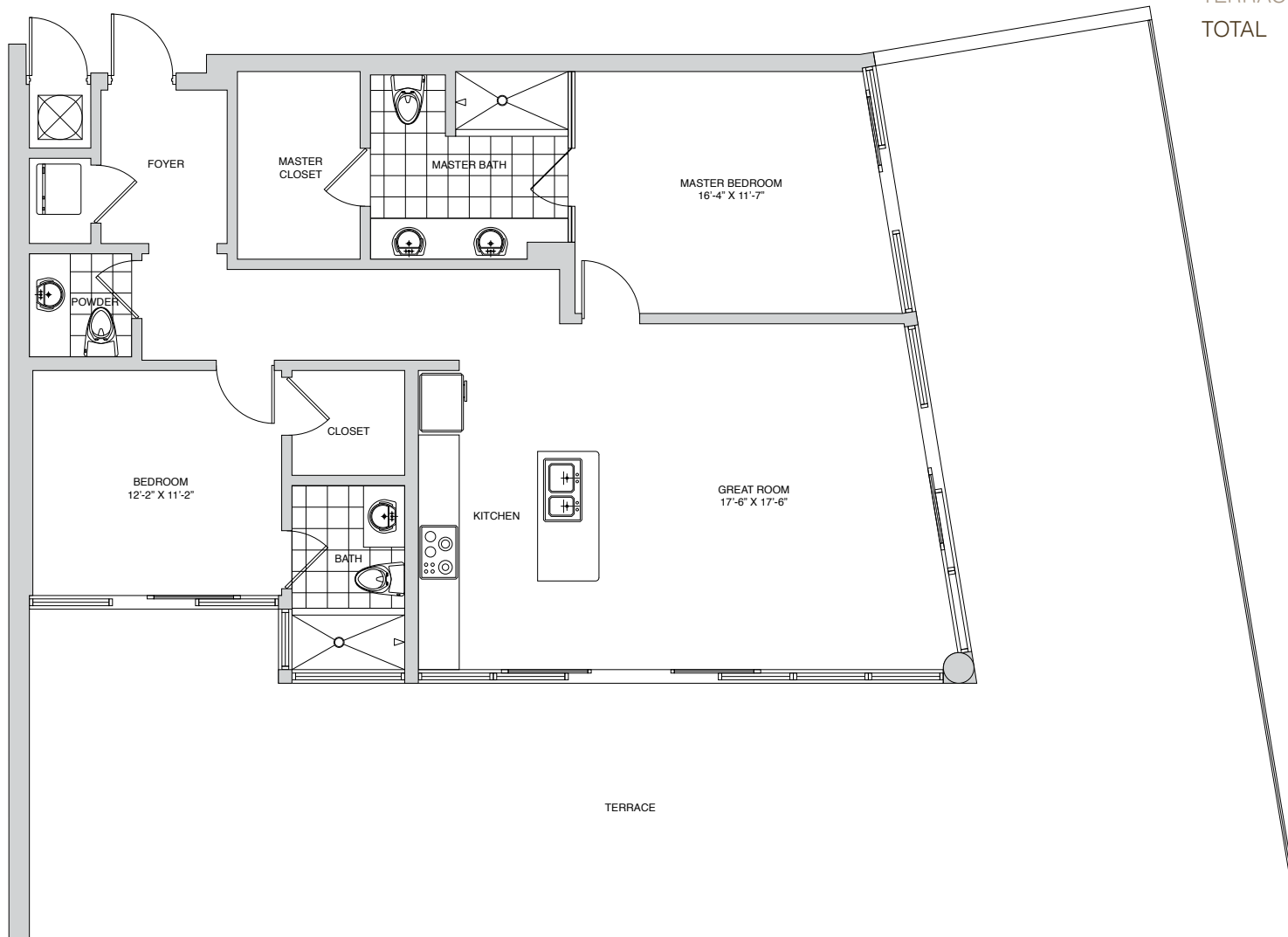



PALAU

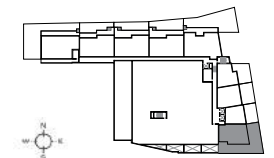
SUNSET HARBOUR

RESIDENCE 209B

TYPE B	2 BEDROOM, 2.5 BATH
INTERIOR	1,297 SQ FT / 120 M ²
TERRACE	1,516 SQ FT / 141 M ²
TOTAL	2,813 SQ FT / 261 M ²



 All plans, elevations, specifications, unit orientation, and designs, are subject to change or substitution without notice by Developer, and should not be relied upon as representations, express or implied, of the final details of the units. Stated dimensions are measured to the exterior face of exterior walls, to the midpoint of demising walls and to the exterior face of walls adjoining corridors or other common elements. All dimensions are approximate and may vary with actual construction, and all floor plans and development plans are subject to change. The floor plan and square footage referenced herein are believed to be true and accurate, but are not guaranteed or warranted and may be revised, amended, or changed without notice.

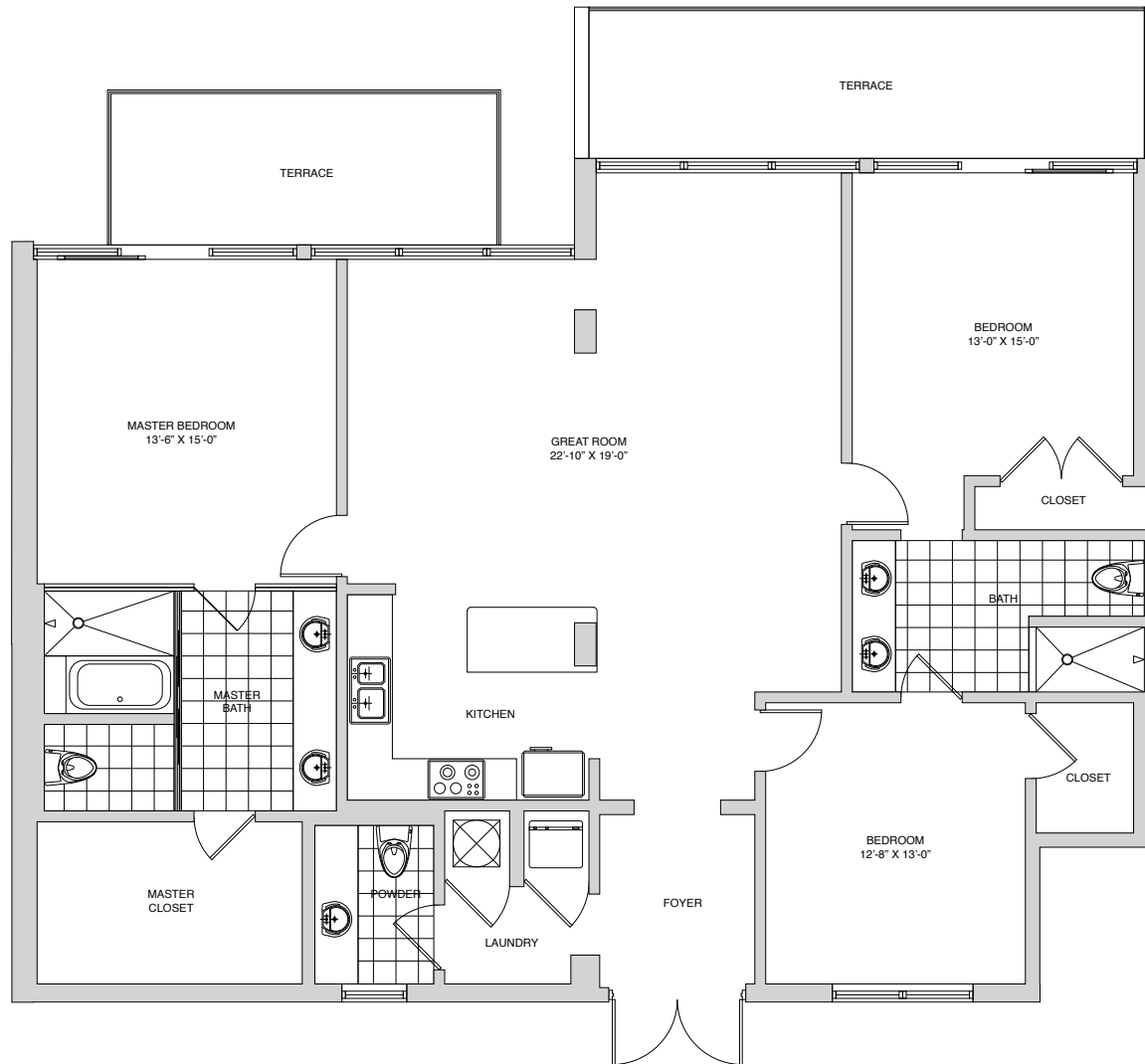



PALAU

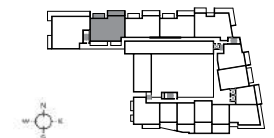
SUNSET HARBOUR

RESIDENCE 302K

TYPE K	3 BEDROOM, 2.5 BATH
INTERIOR	1,950 SQ FT / 181 M ²
TERRACE	320 SQ FT / 30 M ²
TOTAL	2,270 SQ FT / 211 M ²



 All plans, elevations, specifications, unit orientation, and designs, are subject to change or substitution without notice by Developer, and should not be relied upon as representations, express or implied, of the final details of the units. Stated dimensions are measured to the exterior face of exterior walls, to the midpoint of demising walls and to the exterior face of walls adjoining corridors or other common elements. All dimensions are approximate and may vary with actual construction, and all floor plans and development plans are subject to change. The floor plan and square footage referenced herein are believed to be true and accurate, but are not guaranteed or warranted and may be revised, amended, or changed without notice.

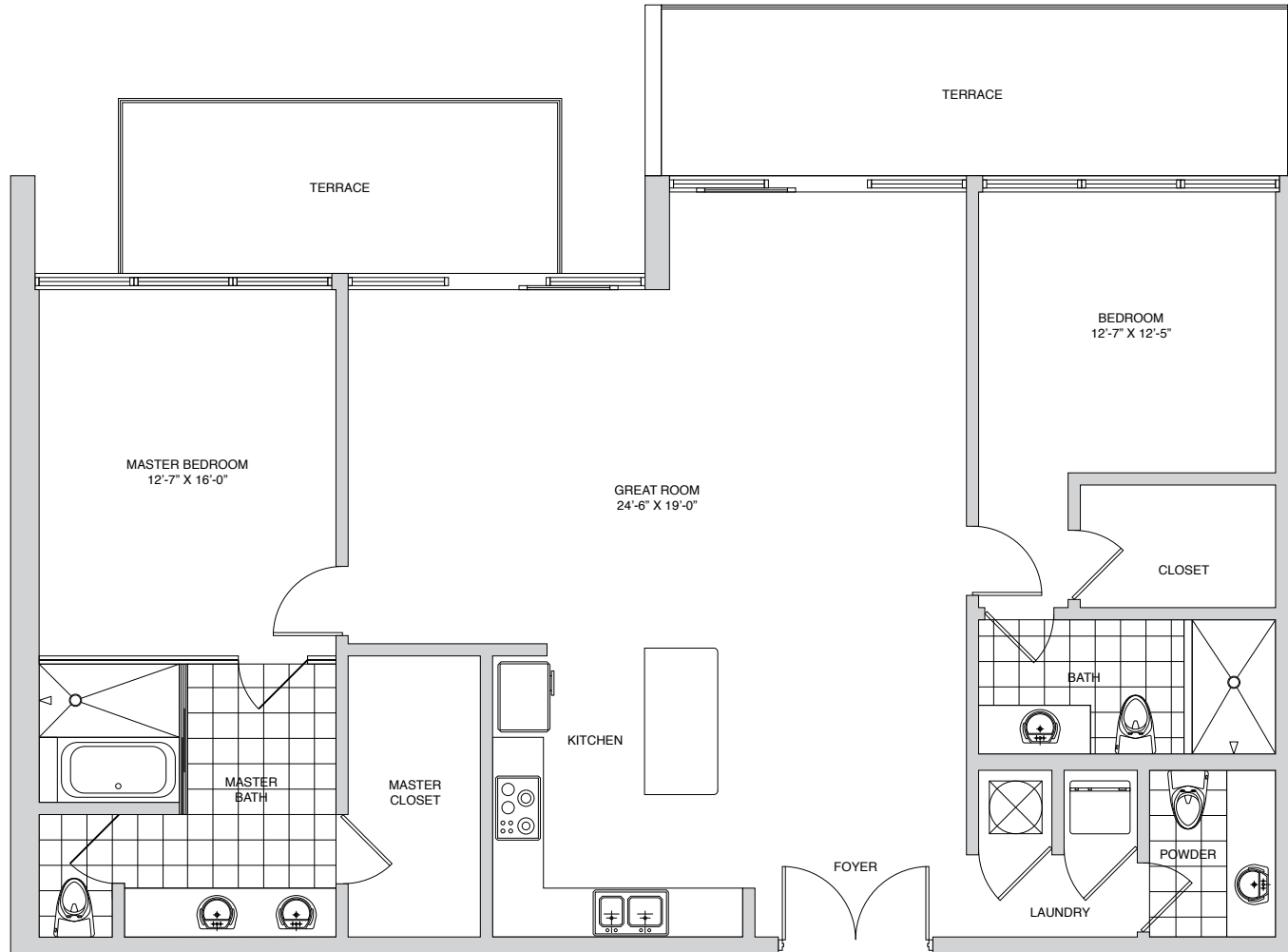


PALAU

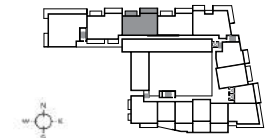
SUNSET HARBOUR

RESIDENCE 303G

TYPE G	2 BEDROOM, 2.5 BATH
INTERIOR	1,595 SQ FT / 148 M ²
TERRACE	320 SQ FT / 30 M ²
TOTAL	1,915 SQ FT / 178 M ²



All plans, elevations, specifications, unit orientation, and designs, are subject to change or substitution without notice by Developer, and should not be relied upon as representations, express or implied, of the final details of the units. Stated dimensions are measured to the exterior face of exterior walls, to the midpoint of demising walls and to the exterior face of walls adjoining corridors or other common elements. All dimensions are approximate and may vary with actual construction, and all floor plans and development plans are subject to change. The floor plan and square footage referenced herein are believed to be true and accurate, but are not guaranteed or warranted and may be revised, amended, or changed without notice.

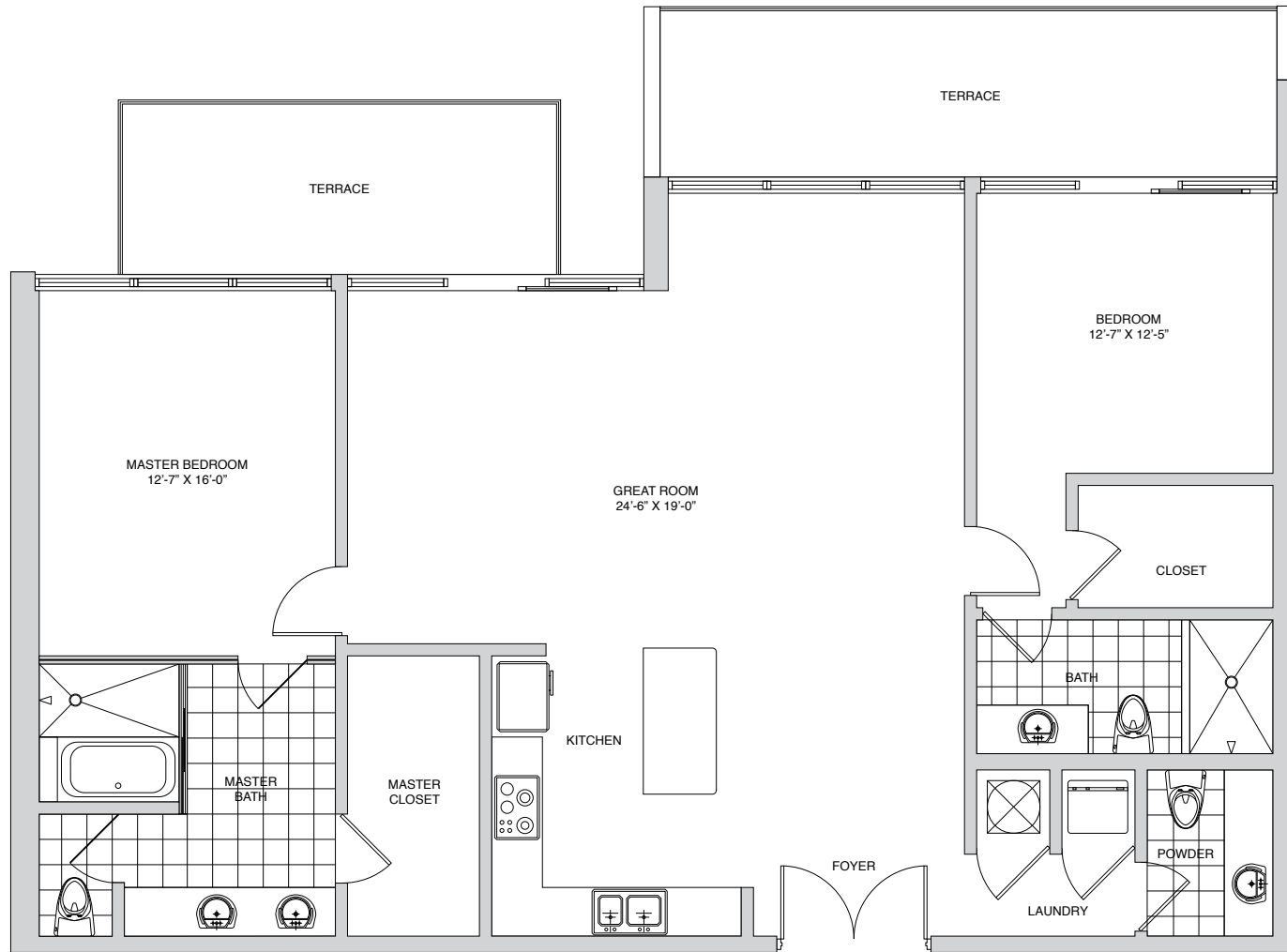



PALAU

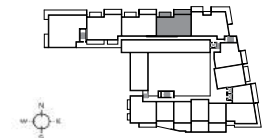
SUNSET HARBOUR

RESIDENCE 304G

TYPE G	2 BEDROOM, 2.5 BATH
INTERIOR	1,595 SQ FT / 148 M ²
TERRACE	312 SQ FT / 29 M ²
TOTAL	1,907 SQ FT / 177 M ²



 All plans, elevations, specifications, unit orientation, and designs, are subject to change or substitution without notice by Developer, and should not be relied upon as representations, express or implied, of the final details of the units. Stated dimensions are measured to the exterior face of exterior walls, to the midpoint of demising walls and to the exterior face of walls adjoining corridors or other common elements. All dimensions are approximate and may vary with actual construction, and all floor plans and development plans are subject to change. The floor plan and square footage referenced herein are believed to be true and accurate, but are not guaranteed or warranted and may be revised, amended, or changed without notice.




PALAU

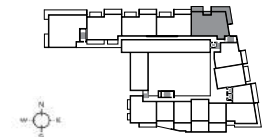
SUNSET HARBOUR

RESIDENCE 305E

TYPE E	3 BEDROOM, 3.5 BATH
INTERIOR	1,995 SQ FT / 185 M ²
TERRACE	524 SQ FT / 49 M ²
TOTAL	2,519 SQ FT / 234 M ²



 All plans, elevations, specifications, unit orientation, and designs, are subject to change or substitution without notice by Developer, and should not be relied upon as representations, express or implied, of the final details of the units. Stated dimensions are measured to the exterior face of exterior walls, to the midpoint of demising walls and to the exterior face of walls adjoining corridors or other common elements. All dimensions are approximate and may vary with actual construction, and all floor plans and development plans are subject to change. The floor plan and square footage referenced herein are believed to be true and accurate, but are not guaranteed or warranted and may be revised, amended, or changed without notice.



PALAU

SUNSET HARBOUR

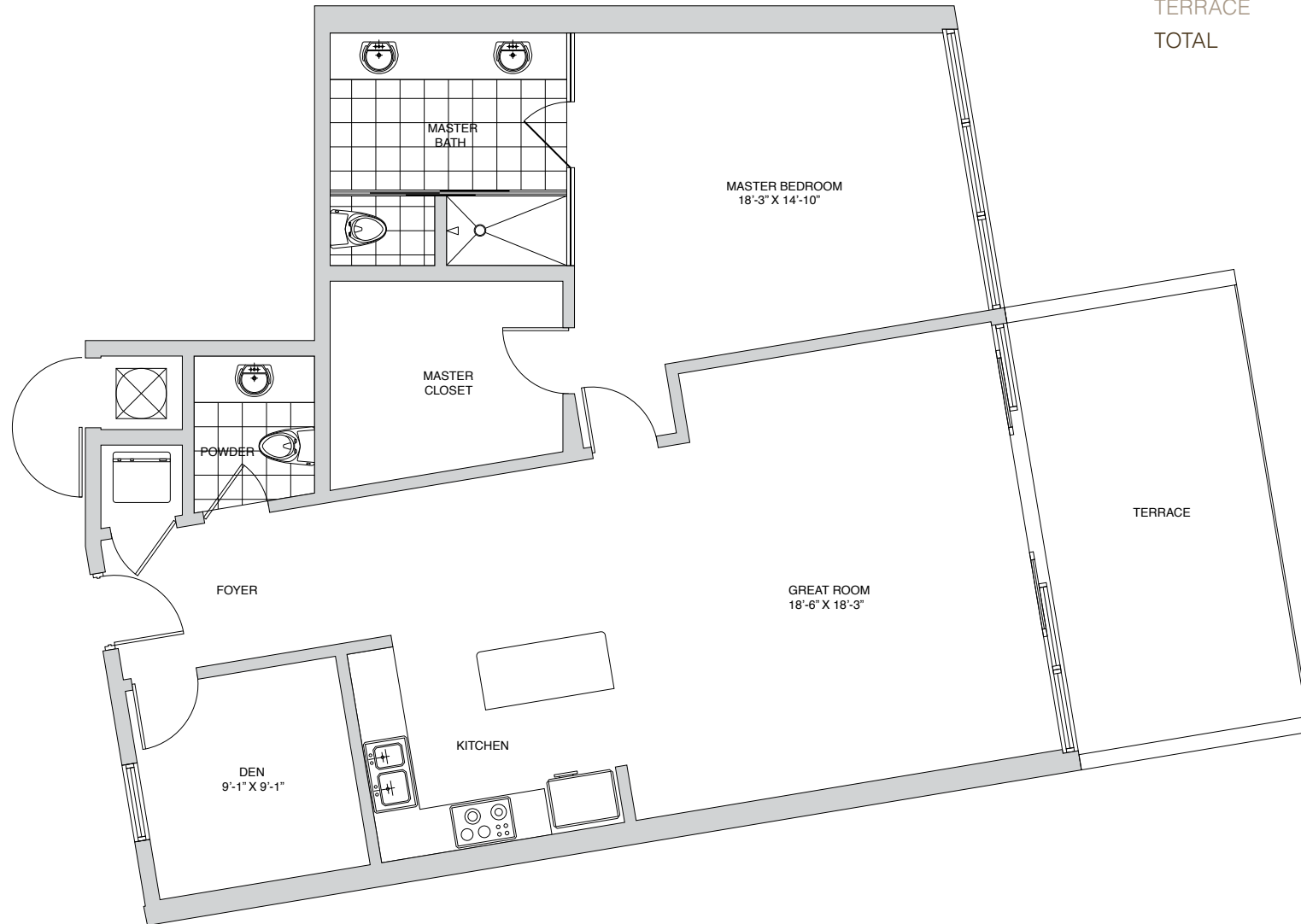
RESIDENCE 306L


TYPE L 1 BEDROOM + DEN, 1.5 BATH

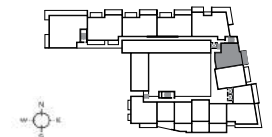
INTERIOR 1,274 SQ FT / 118 M²

TERRACE 215 SQ FT / 20 M²

TOTAL 1,489 SQ FT / 138 M²



 All plans, elevations, specifications, unit orientation, and designs, are subject to change or substitution without notice by Developer, and should not be relied upon as representations, express or implied, of the final details of the units. Stated dimensions are measured to the exterior face of exterior walls, to the midpoint of demising walls and to the exterior face of walls adjoining corridors or other common elements. All dimensions are approximate and may vary with actual construction, and all floor plans and development plans are subject to change. The floor plan and square footage referenced herein are believed to be true and accurate, but are not guaranteed or warranted and may be revised, amended, or changed without notice.




PALAU

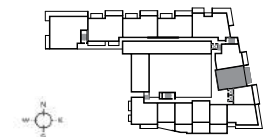
SUNSET HARBOUR

RESIDENCE 307M

TYPE M	2 BEDROOM, 2.5 BATH
INTERIOR	1,365 SQ FT / 127 M ²
TERRACE	320 SQ FT / 30 M ²
TOTAL	1,685 SQ FT / 157 M ²



 All plans, elevations, specifications, unit orientation, and designs, are subject to change or substitution without notice by Developer, and should not be relied upon as representations, express or implied, of the final details of the units. Stated dimensions are measured to the exterior face of exterior walls, to the midpoint of demising walls and to the exterior face of walls adjoining corridors or other common elements. All dimensions are approximate and may vary with actual construction, and all floor plans and development plans are subject to change. The floor plan and square footage referenced herein are believed to be true and accurate, but are not guaranteed or warranted and may be revised, amended, or changed without notice.

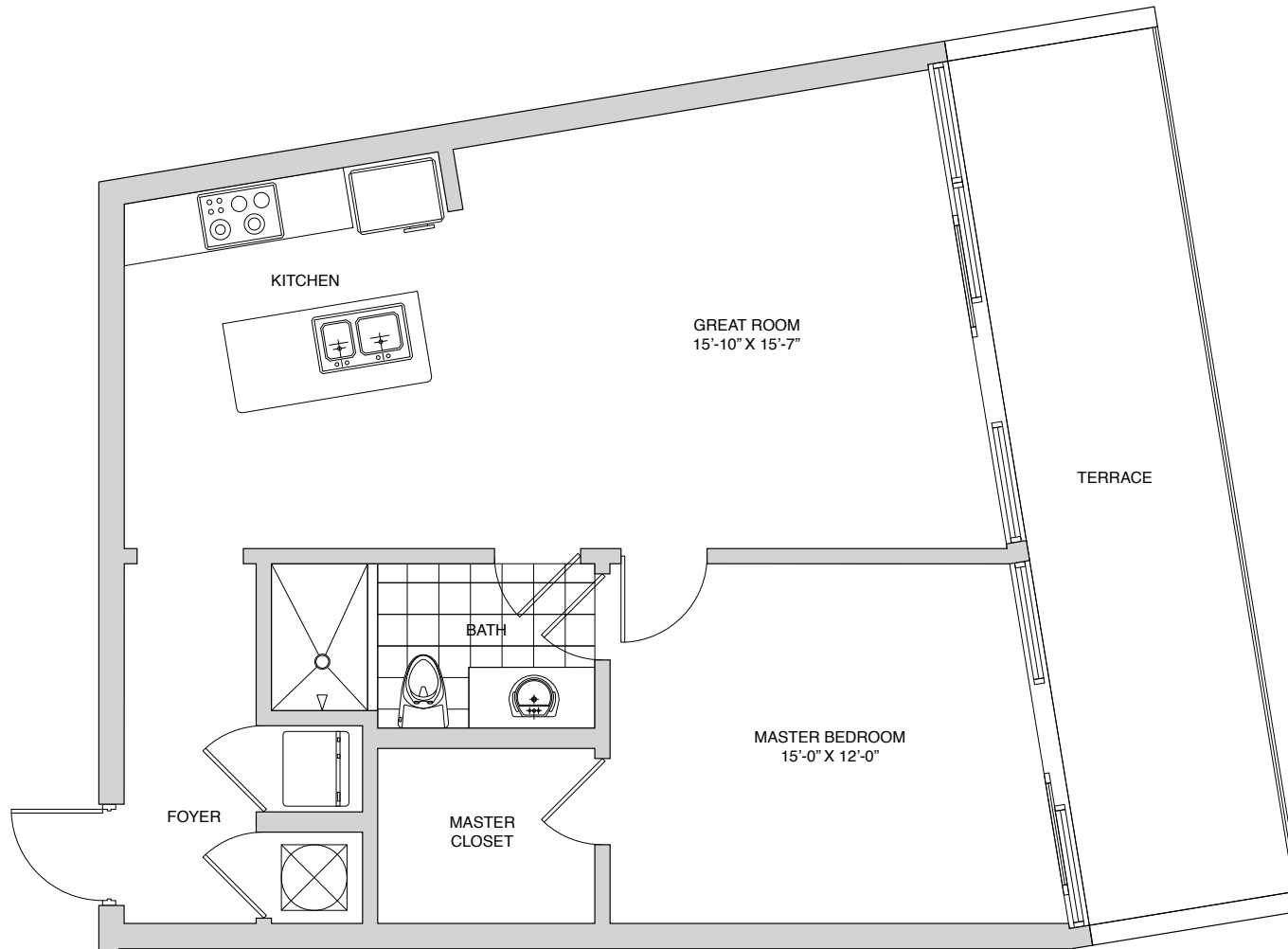



PALAU

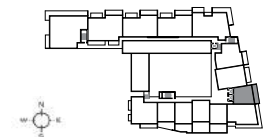
SUNSET HARBOUR

RESIDENCE 308D

TYPE D	1 BEDROOM, 1 BATH
INTERIOR	825 SQ FT / 77 M ²
TERRACE	209 SQ FT / 19 M ²
TOTAL	1,034 SQ FT / 96 M ²



 All plans, elevations, specifications, unit orientation, and designs, are subject to change or substitution without notice by Developer, and should not be relied upon as representations, express or implied, of the final details of the units. Stated dimensions are measured to the exterior face of exterior walls, to the midpoint of demising walls and to the exterior face of walls adjoining corridors or other common elements. All dimensions are approximate and may vary with actual construction, and all floor plans and development plans are subject to change. The floor plan and square footage referenced herein are believed to be true and accurate, but are not guaranteed or warranted and may be revised, amended, or changed without notice.

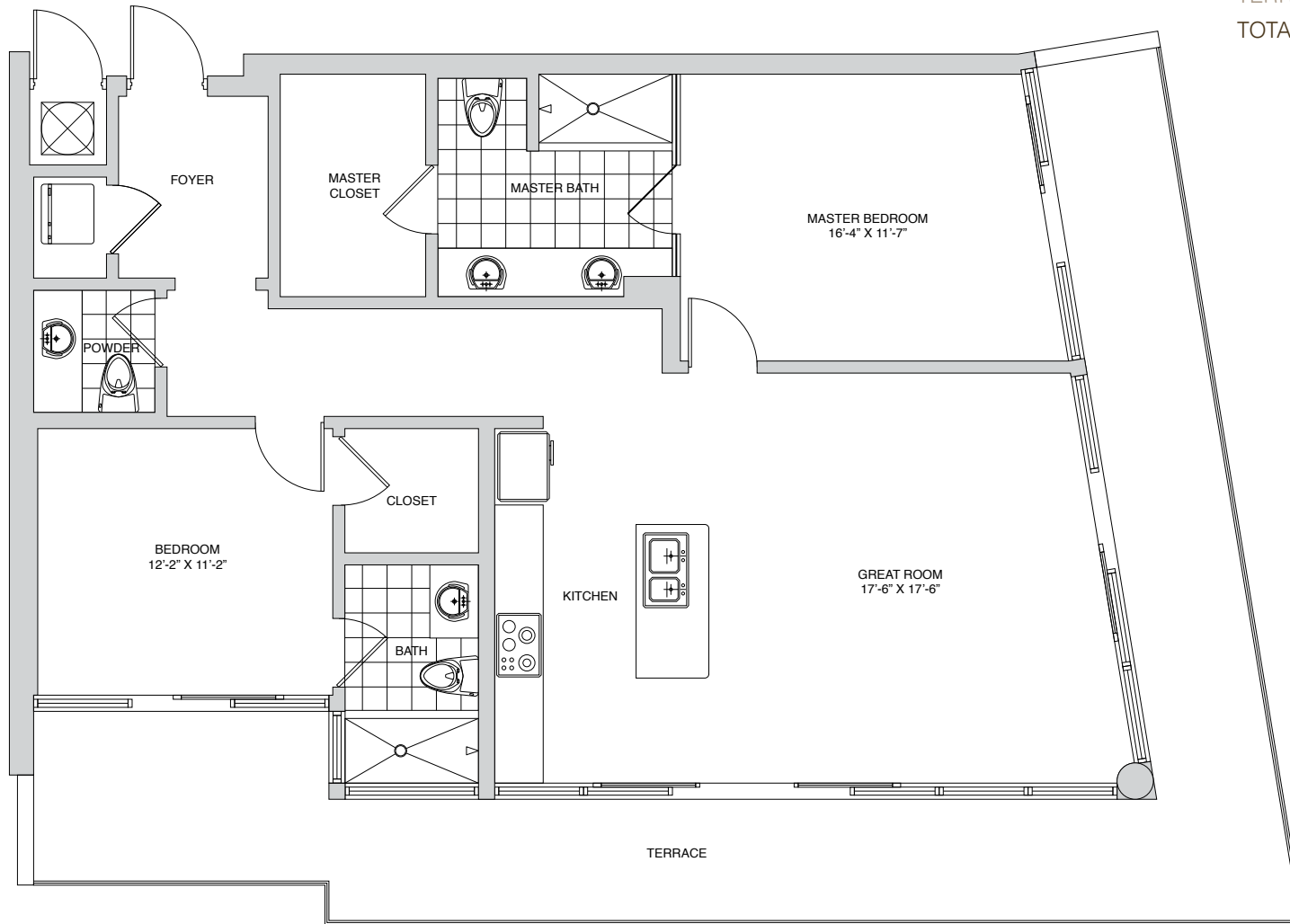



PALAU

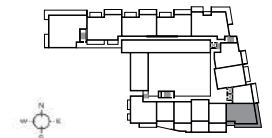
SUNSET HARBOUR

RESIDENCE 309B

TYPE B	2 BEDROOM, 2.5 BATH
INTERIOR	1,297 SQ FT / 120 M ²
TERRACE	455 SQ FT / 42 M ²
TOTAL	1,752 SQ FT / 162 M ²

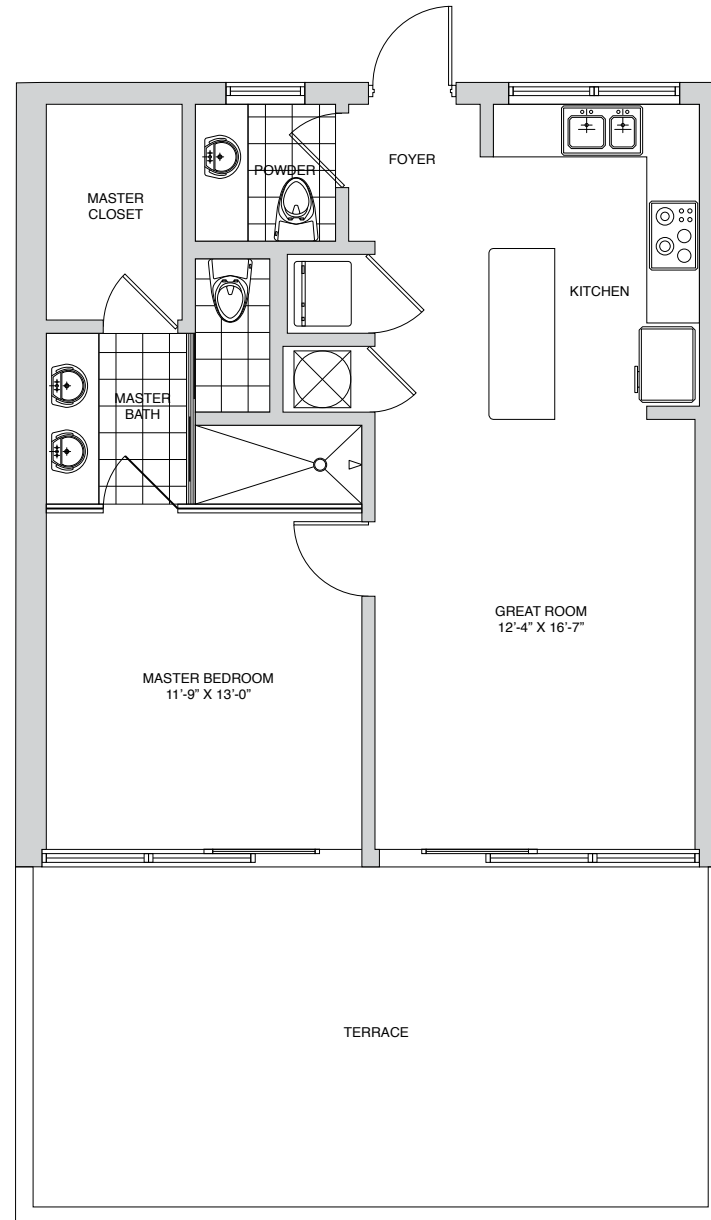


 All plans, elevations, specifications, unit orientation, and designs, are subject to change or substitution without notice by Developer, and should not be relied upon as representations, express or implied, of the final details of the units. Stated dimensions are measured to the exterior face of exterior walls, to the midpoint of demising walls and to the exterior face of walls adjoining corridors or other common elements. All dimensions are approximate and may vary with actual construction, and all floor plans and development plans are subject to change. The floor plan and square footage referenced herein are believed to be true and accurate, but are not guaranteed or warranted and may be revised, amended, or changed without notice.

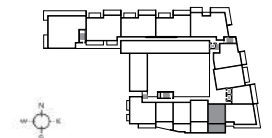


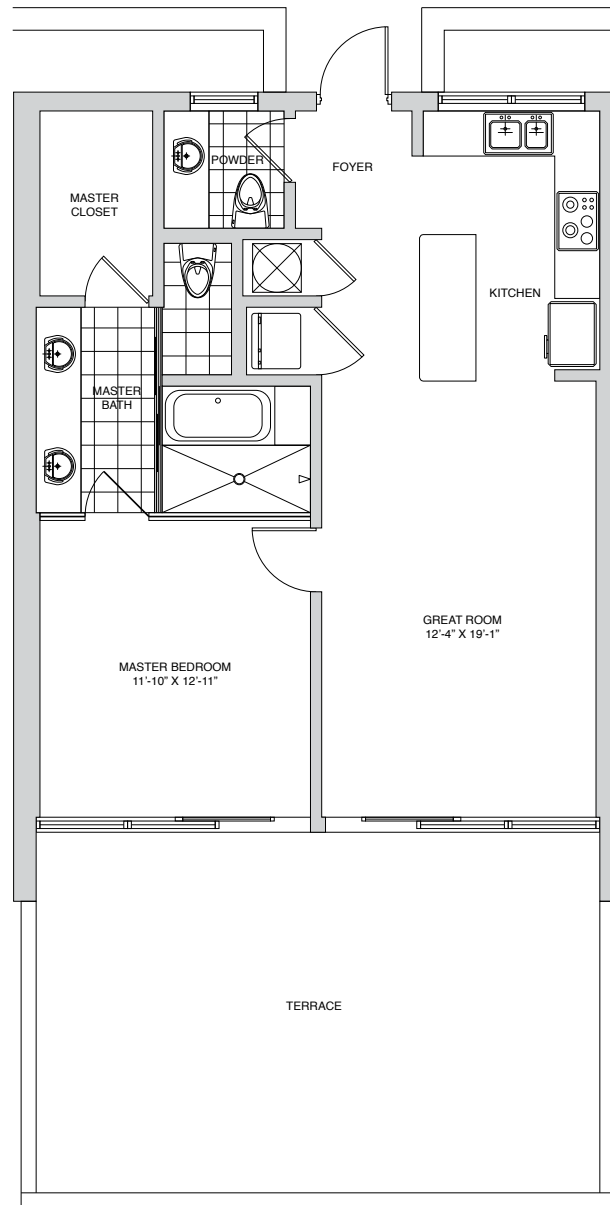
RESIDENCE 310A

TYPE A	1 BEDROOM, 1.5 BATH
INTERIOR	780 SQ FT / 72 M ²
TERRACE	367 SQ FT / 34 M ²
TOTAL	1,147 SQ FT / 106 M ²




All plans, elevations, specifications, unit orientation, and designs, are subject to change or substitution without notice by Developer, and should not be relied upon as representations, express or implied, of the final details of the units. Stated dimensions are measured to the exterior face of exterior walls, to the midpoint of demising walls and to the exterior face of walls adjoining corridors or other common elements. All dimensions are approximate and may vary with actual construction, and all floor plans and development plans are subject to change. The floor plan and square footage referenced herein are believed to be true and accurate, but are not guaranteed or warranted and may be revised, amended, or changed without notice.

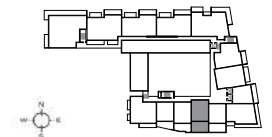




RESIDENCE 311N

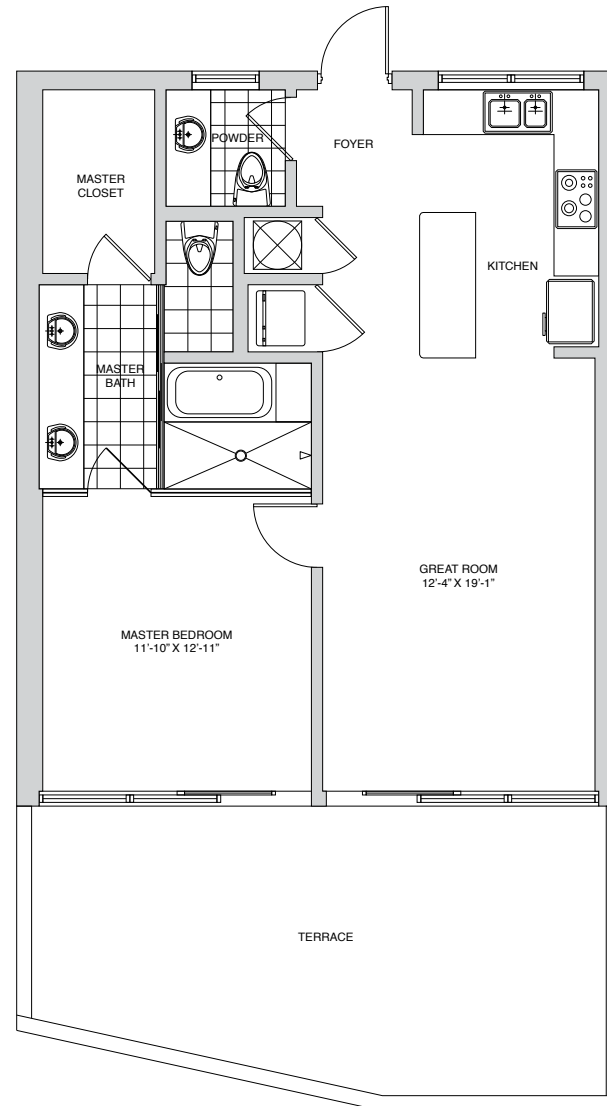
TYPE N	1 BEDROOM, 1.5 BATH
INTERIOR	875 SQ FT / 81 M ²
TERRACE	429 SQ FT / 40 M ²
TOTAL	1,304 SQ FT / 121 M ²


 All plans, elevations, specifications, unit orientation, and designs, are subject to change or substitution without notice by Developer, and should not be relied upon as representations, express or implied, of the final details of the units. Stated dimensions are measured to the exterior face of exterior walls, to the midpoint of demising walls and to the exterior face of walls adjoining corridors or other common elements. All dimensions are approximate and may vary with actual construction, and all floor plans and development plans are subject to change. The floor plan and square footage referenced herein are believed to be true and accurate, but are not guaranteed or warranted and may be revised, amended, or changed without notice.

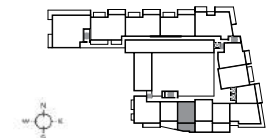


RESIDENCE 312N

TYPE N	1 BEDROOM, 1.5 BATH
INTERIOR	875 SQ FT / 81 M ²
TERRACE	338 SQ FT / 31 M ²
TOTAL	1,213 SQ FT / 112 M ²

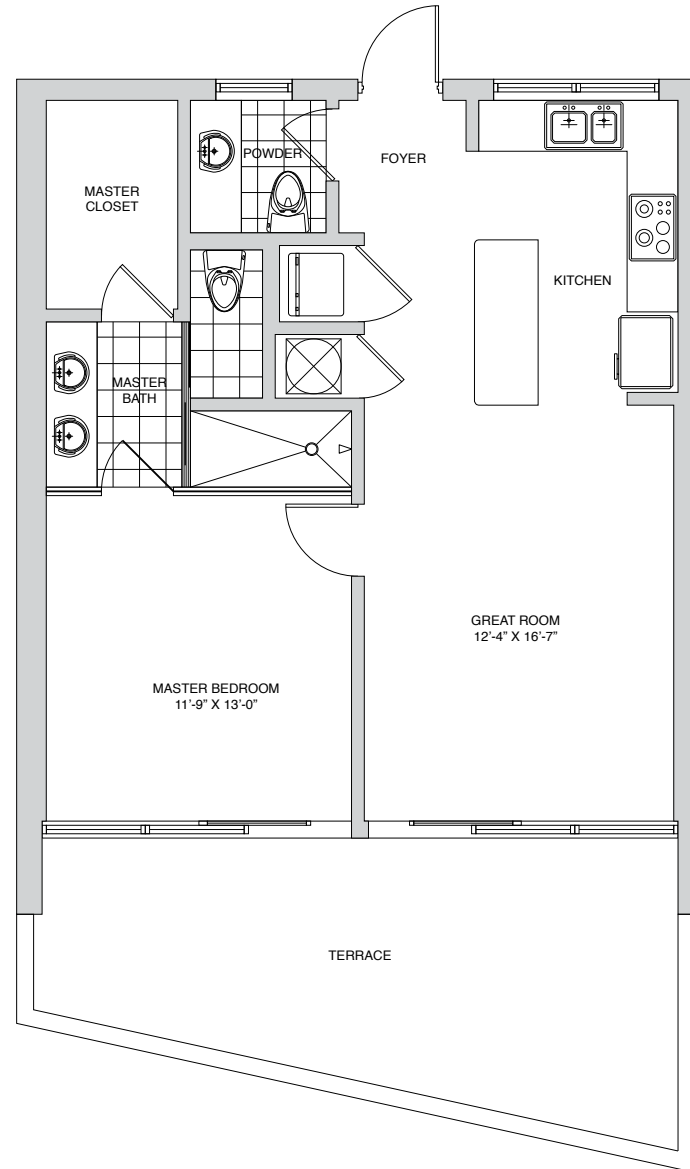


 All plans, elevations, specifications, unit orientation, and designs, are subject to change or substitution without notice by Developer, and should not be relied upon as representations, express or implied, of the final details of the units. Stated dimensions are measured to the exterior face of exterior walls, to the midpoint of demising walls and to the exterior face of walls adjoining corridors or other common elements. All dimensions are approximate and may vary with actual construction, and all floor plans and development plans are subject to change. The floor plan and square footage referenced herein are believed to be true and accurate, but are not guaranteed or warranted and may be revised, amended, or changed without notice.

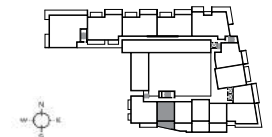


RESIDENCE 313A

TYPE A	1 BEDROOM, 1.5 BATH
INTERIOR	780 SQ FT / 72 M ²
TERRACE	261 SQ FT / 24 M ²
TOTAL	1,041 SQ FT / 96 M ²

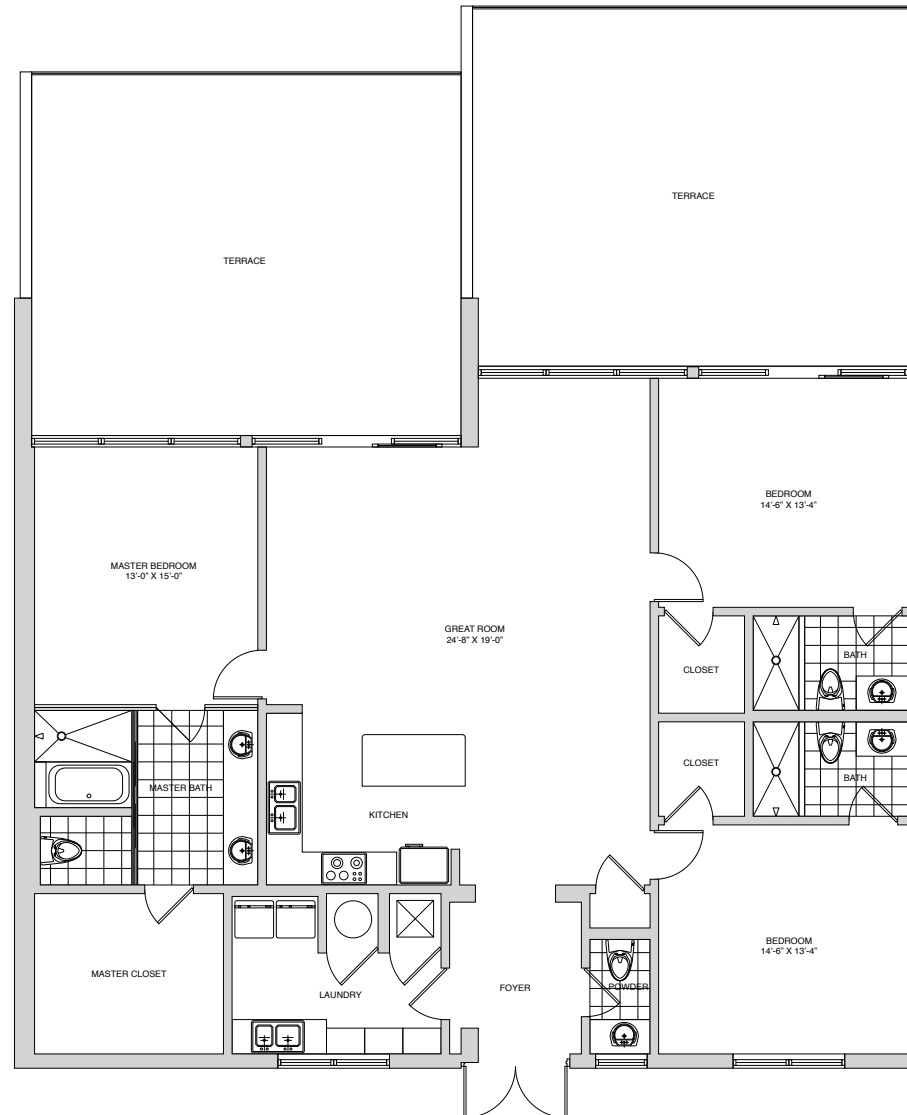



All plans, elevations, specifications, unit orientation, and designs, are subject to change or substitution without notice by Developer, and should not be relied upon as representations, express or implied, of the final details of the units. Stated dimensions are measured to the exterior face of exterior walls, to the midpoint of demising walls and to the exterior face of walls adjoining corridors or other common elements. All dimensions are approximate and may vary with actual construction, and all floor plans and development plans are subject to change. The floor plan and square footage referenced herein are believed to be true and accurate, but are not guaranteed or warranted and may be revised, amended, or changed without notice.

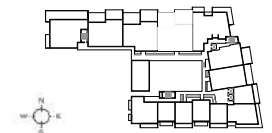


RESIDENCE 404P

TYPE P	3 BEDROOM, 3.5 BATH
INTERIOR	2,045 SQ FT / 190 M ²
TERRACE	1,075 SQ FT / 100 M ²
TOTAL	3,120 SQ FT / 290 M ²



 All plans, elevations, specifications, unit orientation, and designs, are subject to change or substitution without notice by Developer, and should not be relied upon as representations, express or implied, of the final details of the units. Stated dimensions are measured to the exterior face of exterior walls, to the midpoint of demising walls and to the exterior face of walls adjoining corridors or other common elements. All dimensions are approximate and may vary with actual construction, and all floor plans and development plans are subject to change. The floor plan and square footage referenced herein are believed to be true and accurate, but are not guaranteed or warranted and may be revised, amended, or changed without notice.

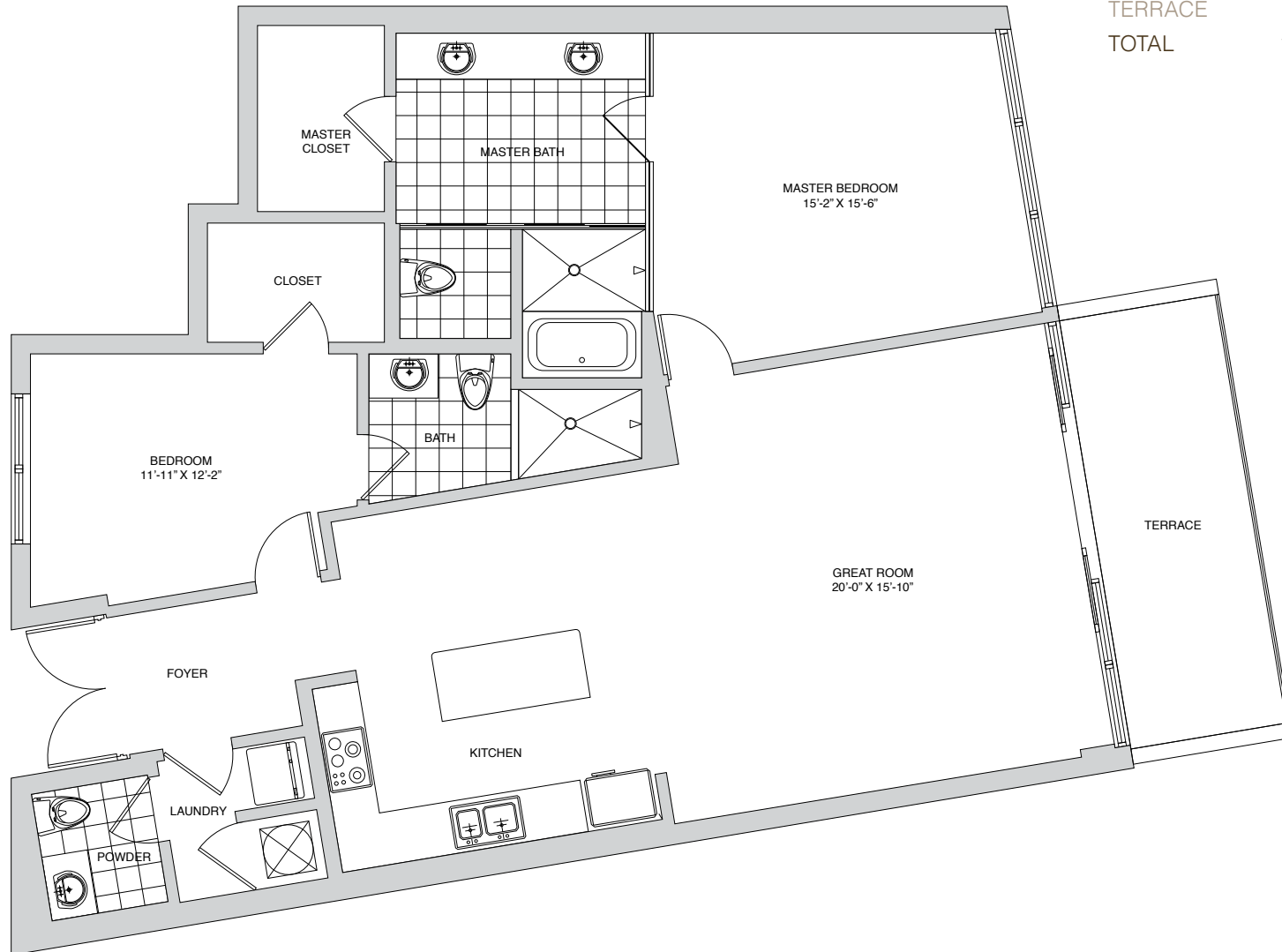



PALAU

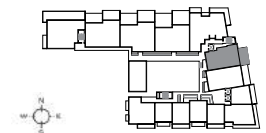
SUNSET HARBOUR

RESIDENCE 406S

TYPE S	2 BEDROOM, 2.5 BATH
INTERIOR	1,569 SQ FT / 146 M ²
TERRACE	215 SQ FT / 20 M ²
TOTAL	1,784 SQ FT / 166 M ²



 All plans, elevations, specifications, unit orientation, and designs, are subject to change or substitution without notice by Developer, and should not be relied upon as representations, express or implied, of the final details of the units. Stated dimensions are measured to the exterior face of exterior walls, to the midpoint of demising walls and to the exterior face of walls adjoining corridors or other common elements. All dimensions are approximate and may vary with actual construction, and all floor plans and development plans are subject to change. The floor plan and square footage referenced herein are believed to be true and accurate, but are not guaranteed or warranted and may be revised, amended, or changed without notice.

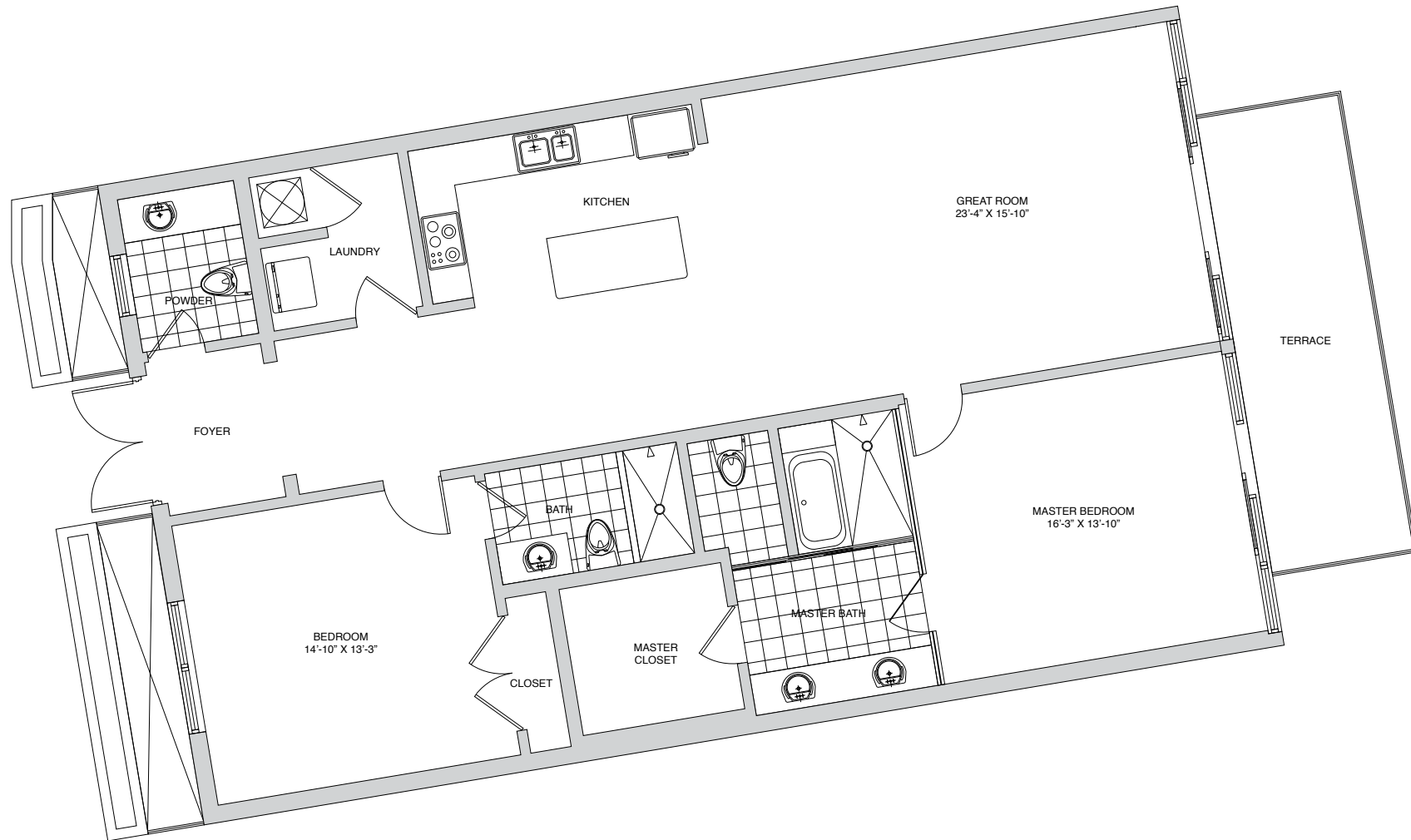



PALAU

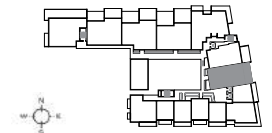
SUNSET HARBOUR

RESIDENCE 407T

TYPE T	2 BEDROOM, 2.5 BATH
INTERIOR	1,684 SQ FT / 156 M ²
TERRACE	320 SQ FT / 30 M ²
TOTAL	2,004 SQ FT / 186 M ²



 All plans, elevations, specifications, unit orientation, and designs, are subject to change or substitution without notice by Developer, and should not be relied upon as representations, express or implied, of the final details of the units. Stated dimensions are measured to the exterior face of exterior walls, to the midpoint of demising walls and to the exterior face of walls adjoining corridors or other common elements. All dimensions are approximate and may vary with actual construction, and all floor plans and development plans are subject to change. The floor plan and square footage referenced herein are believed to be true and accurate, but are not guaranteed or warranted and may be revised, amended, or changed without notice.

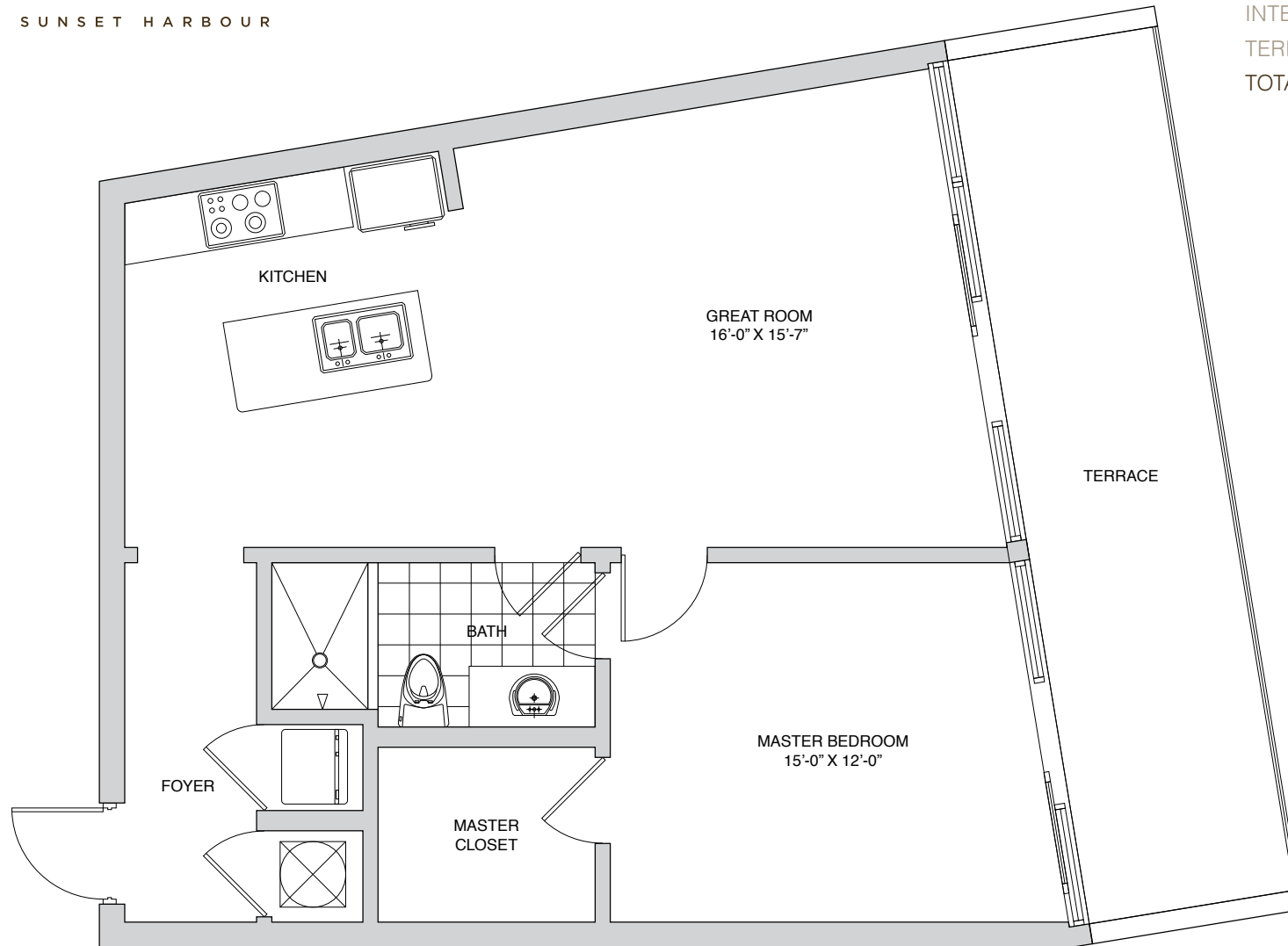



PALAU

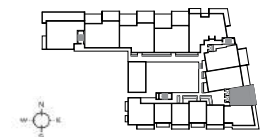
SUNSET HARBOUR

RESIDENCE 408D

TYPE D	1 BEDROOM, 1 BATH
INTERIOR	825 SQ FT / 77 M ²
TERRACE	209 SQ FT / 19 M ²
TOTAL	1,034 SQ FT / 96 M ²



 All plans, elevations, specifications, unit orientation, and designs, are subject to change or substitution without notice by Developer, and should not be relied upon as representations, express or implied, of the final details of the units. Stated dimensions are measured to the exterior face of exterior walls, to the midpoint of demising walls and to the exterior face of walls adjoining corridors or other common elements. All dimensions are approximate and may vary with actual construction, and all floor plans and development plans are subject to change. The floor plan and square footage referenced herein are believed to be true and accurate, but are not guaranteed or warranted and may be revised, amended, or changed without notice.

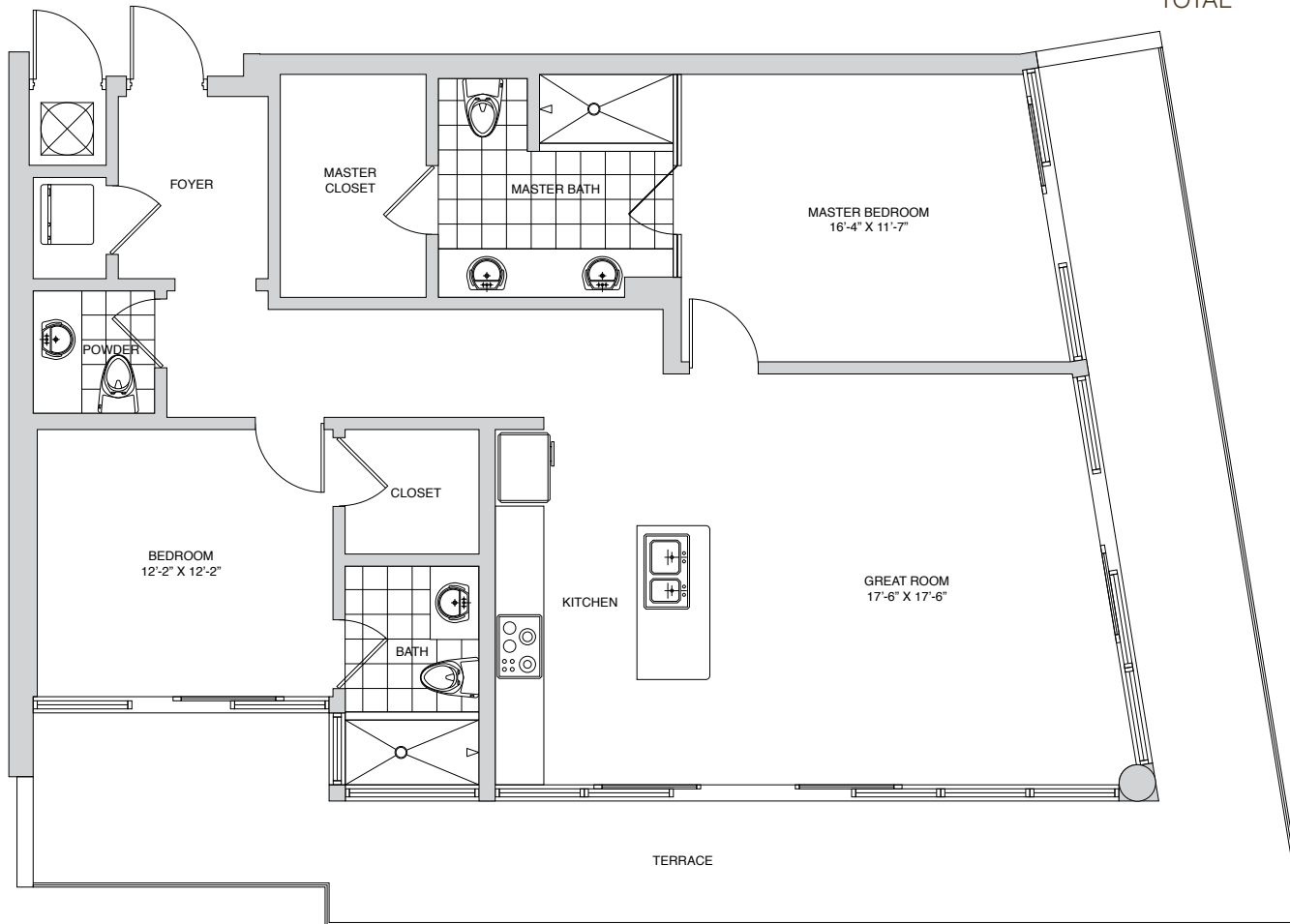



PALAU

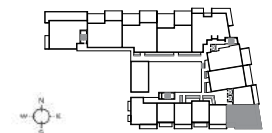
SUNSET HARBOUR

RESIDENCE 409B

TYPE B	2 BEDROOM, 2.5 BATH
INTERIOR	1,297 SQ FT / 120 M ²
TERRACE	455 SQ FT / 42 M ²
TOTAL	1,752 SQ FT / 162 M ²

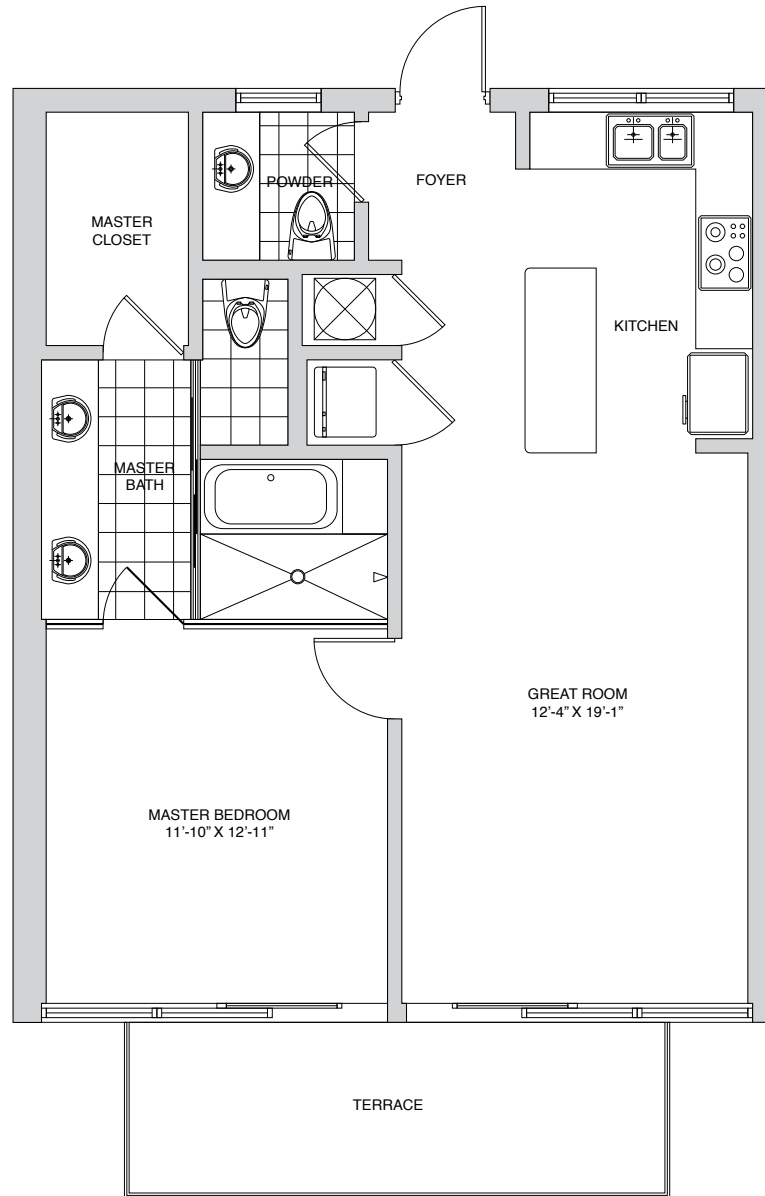


 All plans, elevations, specifications, unit orientation, and designs, are subject to change or substitution without notice by Developer, and should not be relied upon as representations, express or implied, of the final details of the units. Stated dimensions are measured to the exterior face of exterior walls, to the midpoint of demising walls and to the exterior face of walls adjoining corridors or other common elements. All dimensions are approximate and may vary with actual construction, and all floor plans and development plans are subject to change. The floor plan and square footage referenced herein are believed to be true and accurate, but are not guaranteed or warranted and may be revised, amended, or changed without notice.



RESIDENCE 411N

TYPE N	1 BEDROOM, 1.5 BATH
INTERIOR	875 SQ FT / 81 M ²
TERRACE	118 SQ FT / 11 M ²
TOTAL	993 SQ FT / 92 M ²

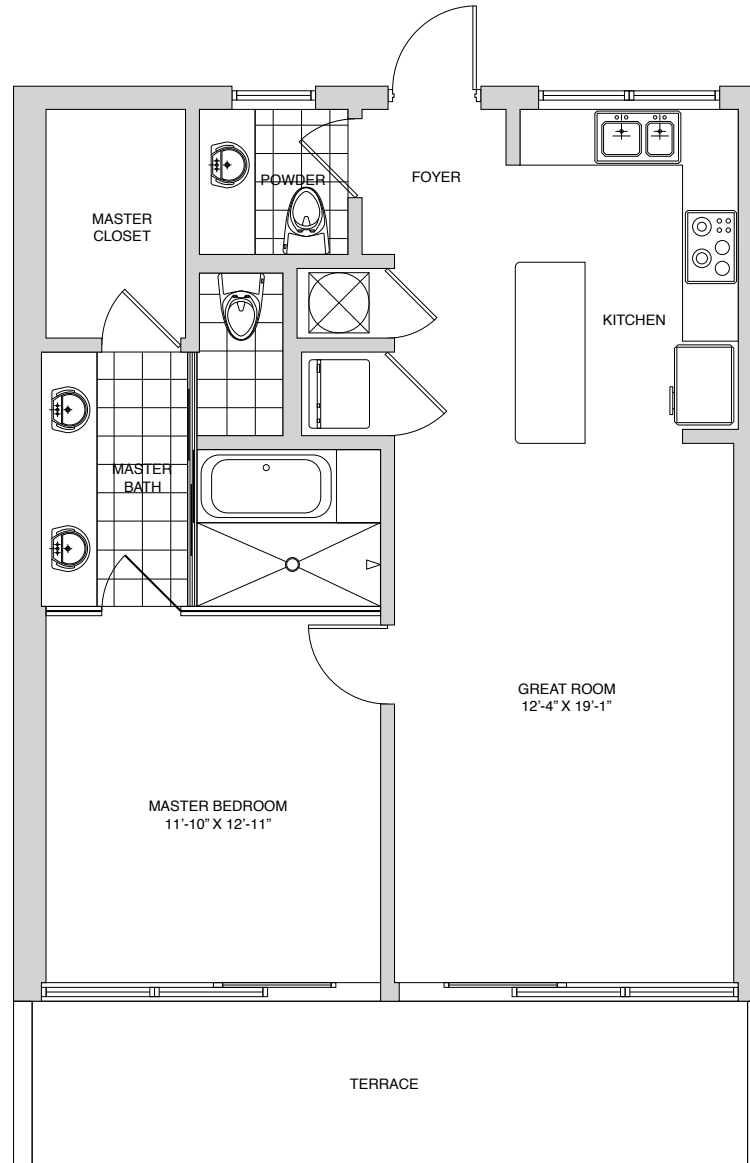


All plans, elevations, specifications, unit orientation, and designs, are subject to change or substitution without notice by Developer, and should not be relied upon as representations, express or implied, of the final details of the units. Stated dimensions are measured to the exterior face of exterior walls, to the midpoint of demising walls and to the exterior face of walls adjoining corridors or other common elements. All dimensions are approximate and may vary with actual construction, and all floor plans and development plans are subject to change. The floor plan and square footage referenced herein are believed to be true and accurate, but are not guaranteed or warranted and may be revised, amended, or changed without notice.

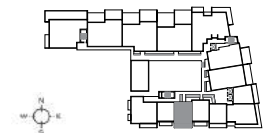


RESIDENCE 412N

TYPE N	1 BEDROOM, 1.5 BATH
INTERIOR	875 SQ FT / 81 M ²
TERRACE	152 SQ FT / 14 M ²
TOTAL	1,027 SQ FT / 95 M ²

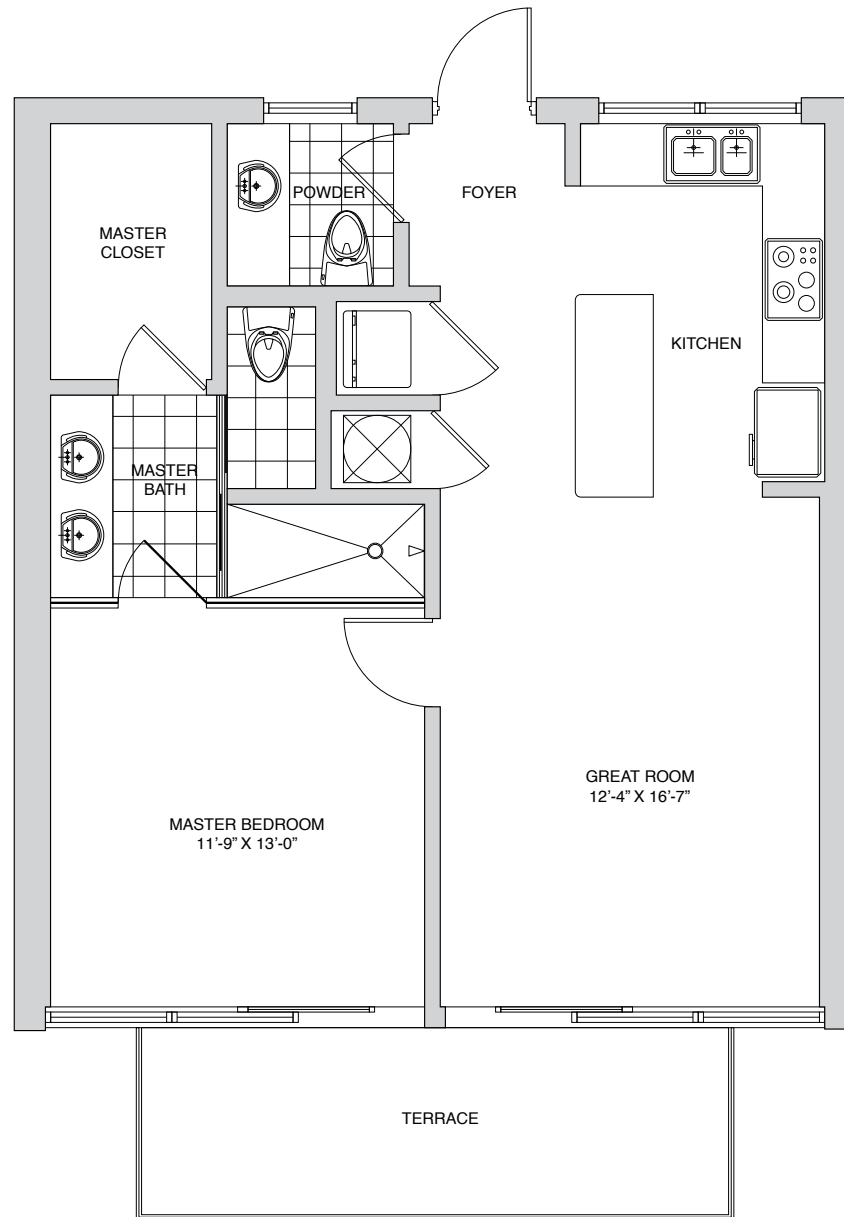


All plans, elevations, specifications, unit orientation, and designs, are subject to change or substitution without notice by Developer, and should not be relied upon as representations, express or implied, of the final details of the units. Stated dimensions are measured to the exterior face of exterior walls, to the midpoint of demising walls and to the exterior face of walls adjoining corridors or other common elements. All dimensions are approximate and may vary with actual construction, and all floor plans and development plans are subject to change. The floor plan and square footage referenced herein are believed to be true and accurate, but are not guaranteed or warranted and may be revised, amended, or changed without notice.



RESIDENCE 413A

TYPE A	1 BEDROOM, 1.5 BATH
INTERIOR	780 SQ FT / 72 M ²
TERRACE	118 SQ FT / 11 M ²
TOTAL	898 SQ FT / 83 M ²



All plans, elevations, specifications, unit orientation, and designs, are subject to change or substitution without notice by Developer, and should not be relied upon as representations, express or implied, of the final details of the units. Stated dimensions are measured to the exterior face of exterior walls, to the midpoint of demising walls and to the exterior face of walls adjoining corridors or other common elements. All dimensions are approximate and may vary with actual construction, and all floor plans and development plans are subject to change. The floor plan and square footage referenced herein are believed to be true and accurate, but are not guaranteed or warranted and may be revised, amended, or changed without notice.

