



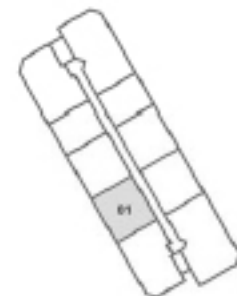

Biscayne Bay


Atlantic Ocean

RESIDENCE 01

2 Bedrooms / 2 Bathrooms

1,165 Interior Square Feet [108m²]



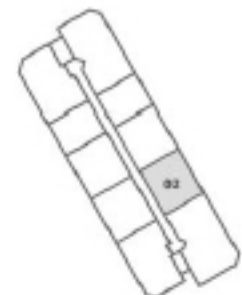
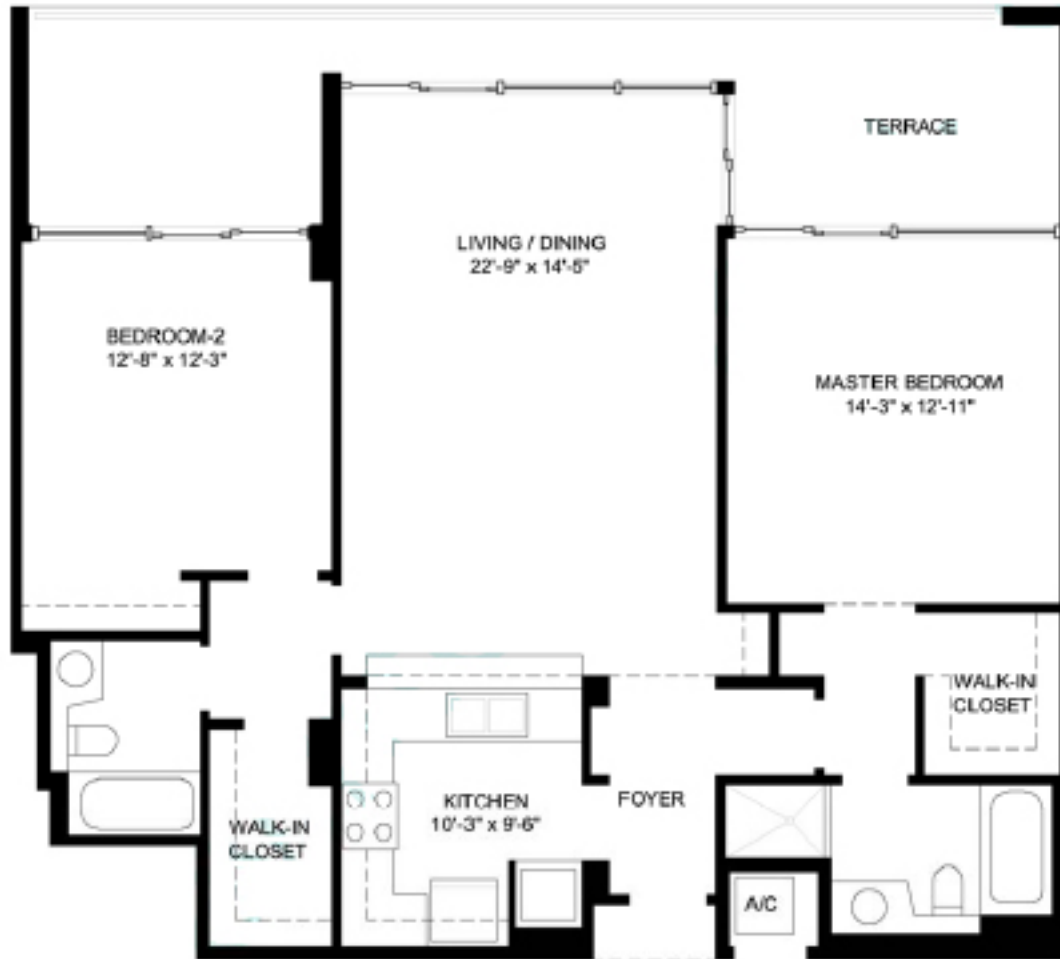
SOUTH PONTE PARK



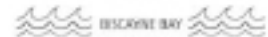
RESIDENCE 02

2 Bedrooms / 2 Bathrooms

1,169 Interior Square Feet [109m²]



SOUTH PONTE PARK



DISCRIVE BAY



RESIDENCE 03

2 Bedrooms / 2 Bathrooms

1,271 Interior Square Feet [118m²]



SOUTH PONTE PARK



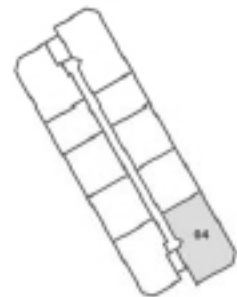
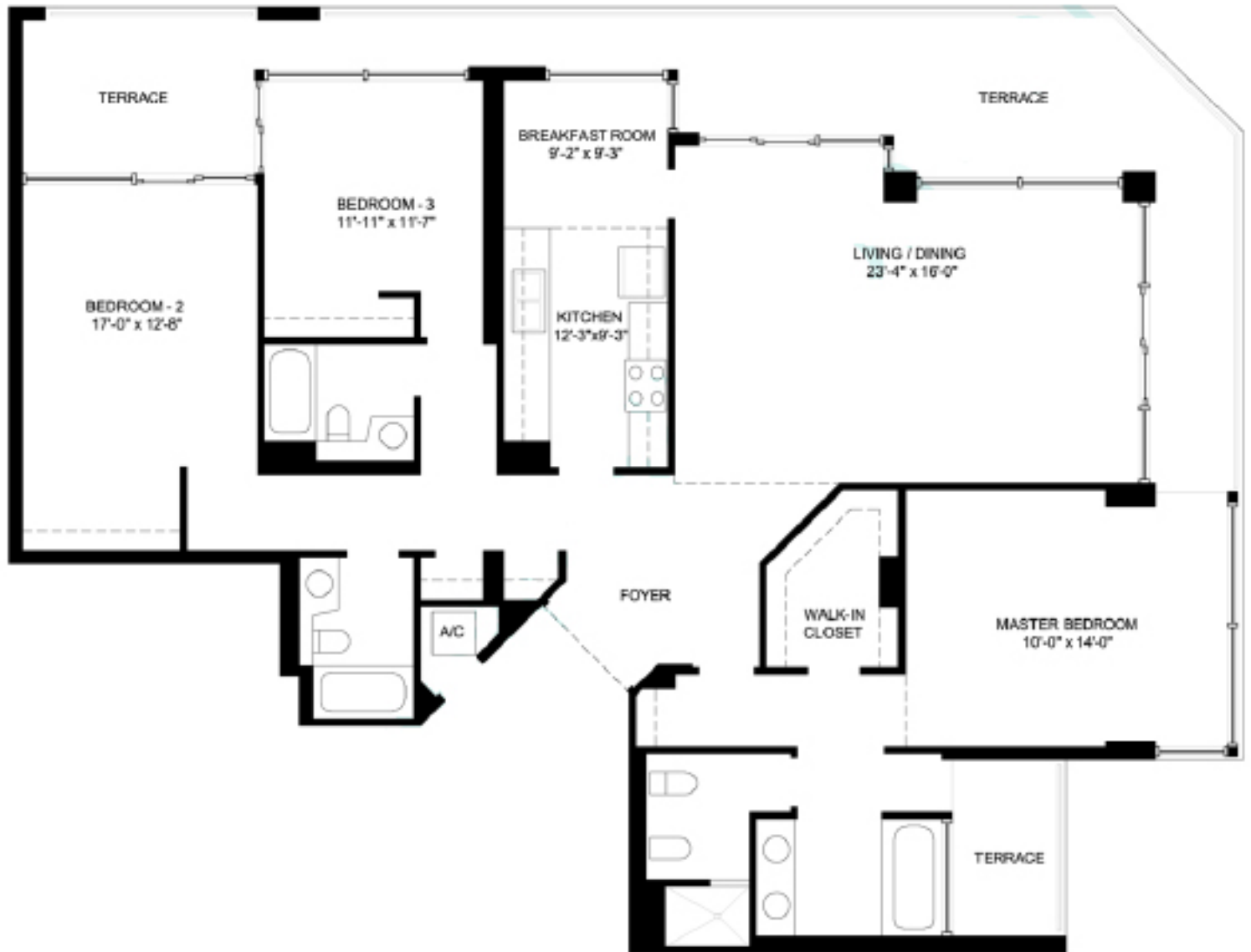
DISCRIVE BAY



RESIDENCE 04

3 Bedrooms / 3 Bathrooms

1,802 Interior Square Feet [167m²]



SOUTH POINTE MAR
BISCAYNE BAY



RESIDENCE 05

2 Bedrooms / 2 Bathrooms
1,049 Interior Square Feet [97m2]



SOUTH POINTE PARK

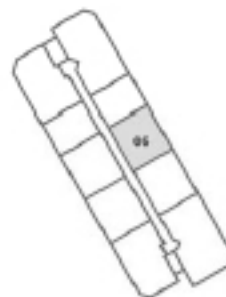
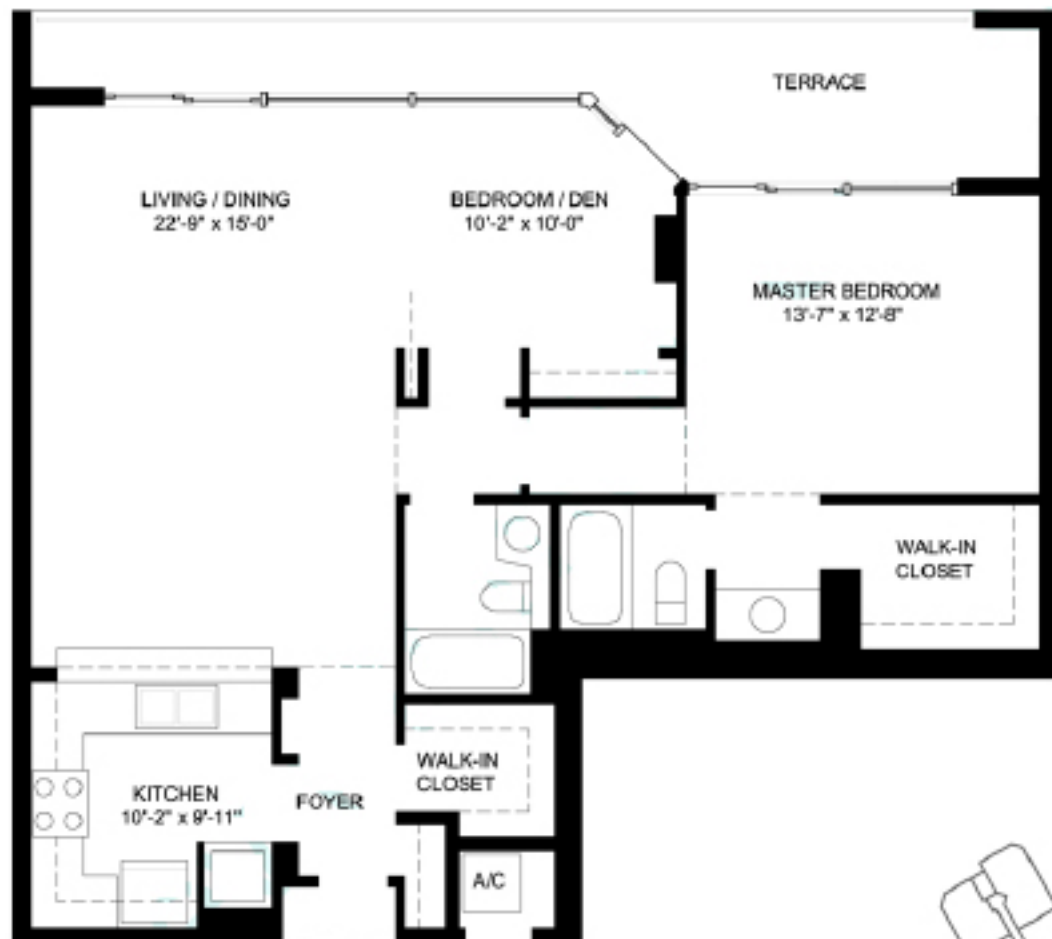


DISCOVERY BAY



RESIDENCE 06

2 Bedrooms / 2 Bathrooms
1,049 Interior Square Feet [97m²]

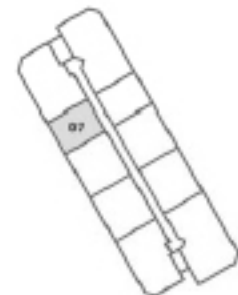
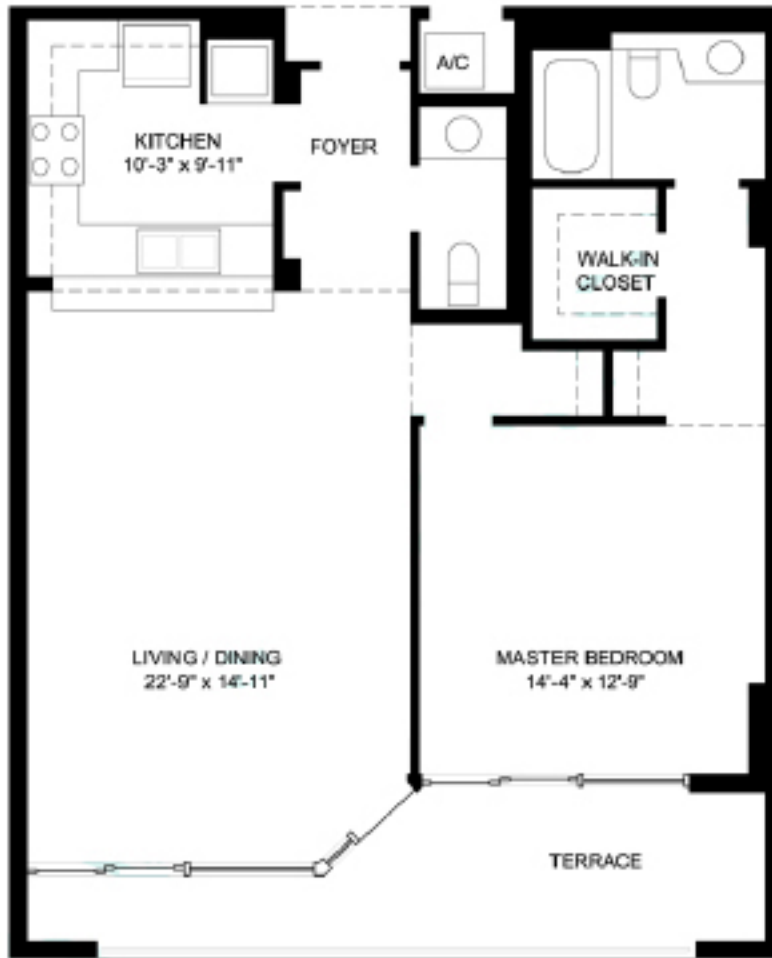


SOUTH POINTE PARK
DISCRIBE BAY



RESIDENCE 07

1 Bedroom / 1.5 Bathrooms
858 Interior Square Feet [80m2]

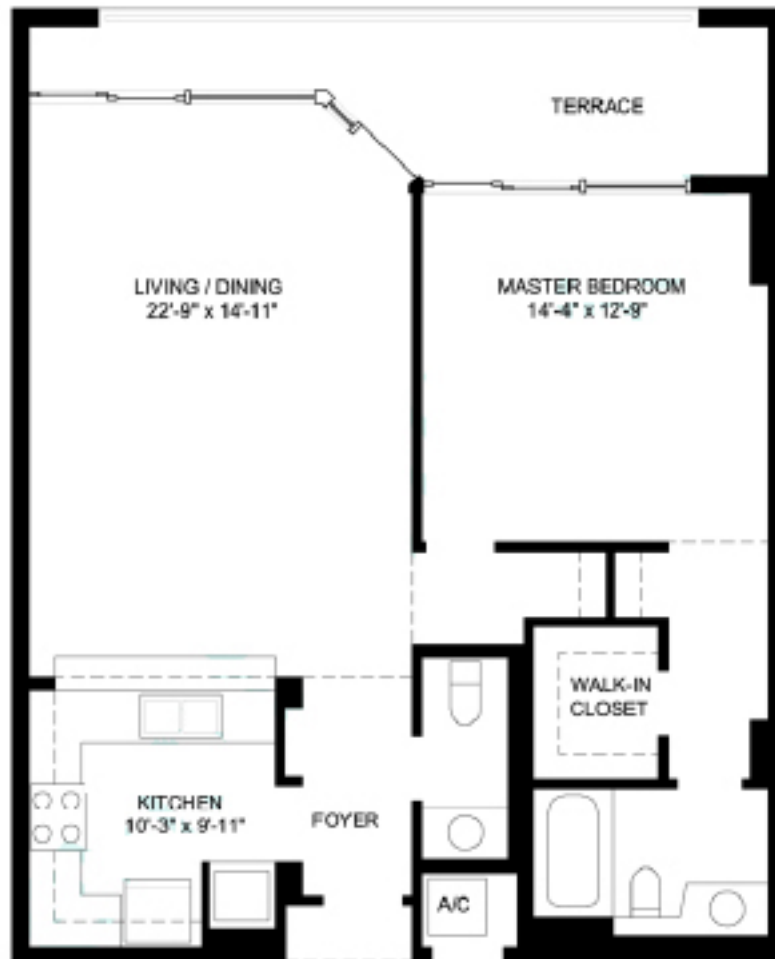


SOUTH PONTE PARK
DESCRIBE BAY



RESIDENCE 08

1 Bedroom / 1.5 Bathrooms
858 Interior Square Feet [80m²]



SOUTH POINTE PARK
DISCRIBE BAY



RESIDENCE 09

2 Bedrooms / 2 Bathrooms
1,279 Interior Square Feet [119m²]



50 LUSH PONTE PARK



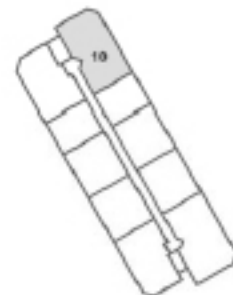
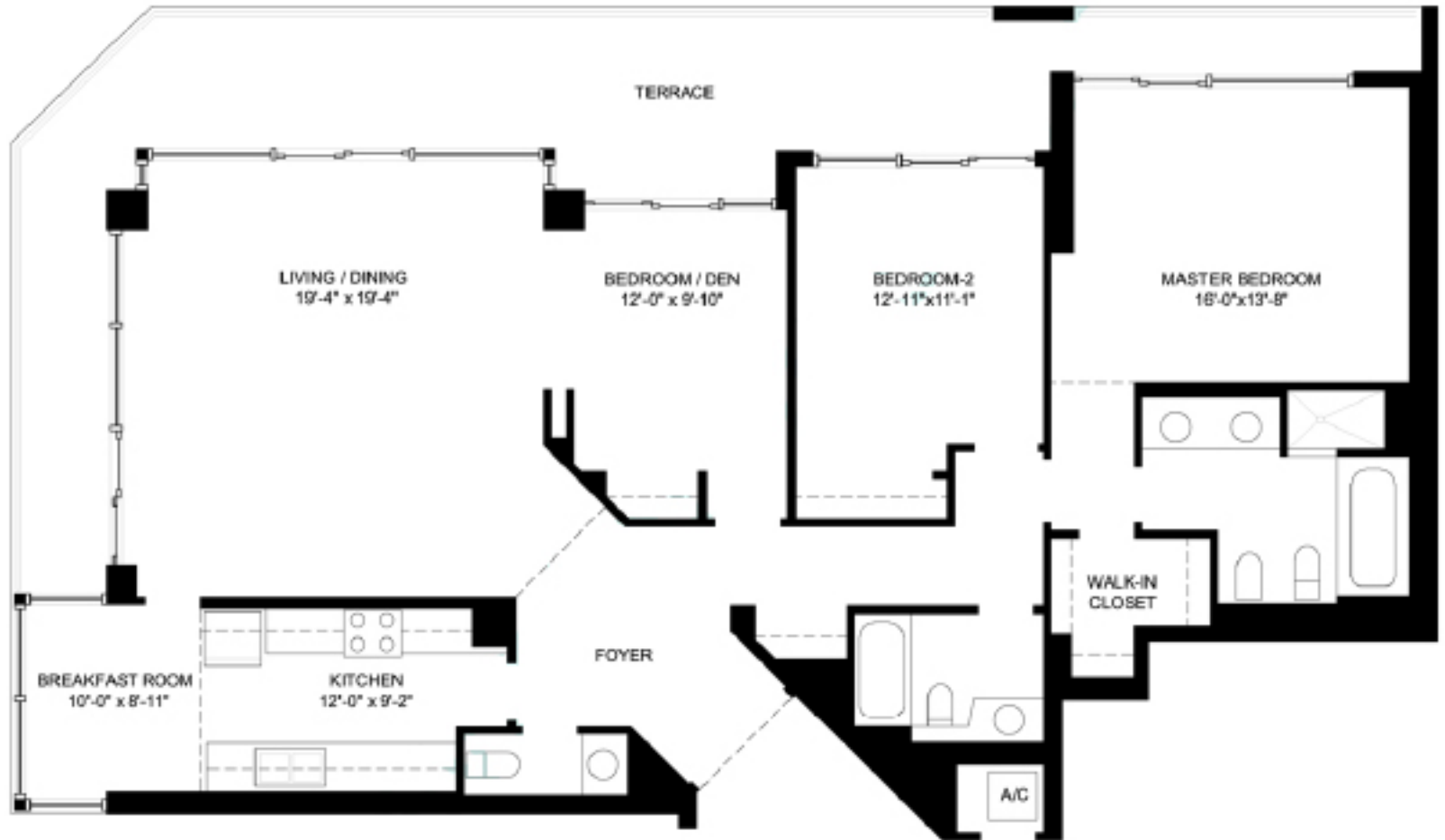
ESCONDIDO BAY



RESIDENCE 10

2 Bedrooms + Den / 2.5 Bathrooms

1,559 Interior Square Feet [145m²]



SOUTH POINTE PARK



BISCAYNE BAY



All dimensions are approximate and all floor plans and development plans are subject to change without notice.